

Steelcut Trio

Steelcut Trio is available across a range of seating products and was designed with a special weave to create a three-dimensional surface.

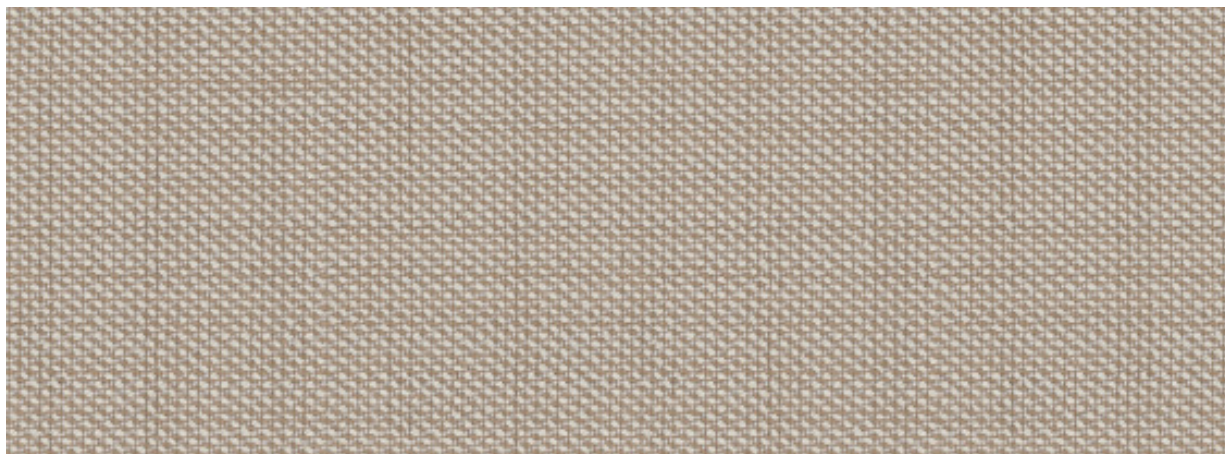
Steelcase

Disclaimer

There may be variation in color, texture, and finish between this sample and the actual product.

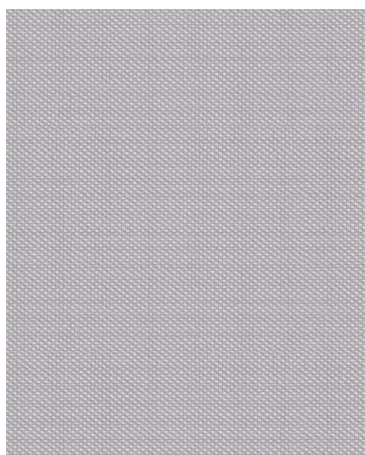
Item #23-000029 02/24 ©2022 Steelcase Inc. All rights reserved. All specifications subject to change without notice. Trademarks used herein are the property of Steelcase Inc. or of their respective owners. Printed in U.S.A.

Steelcut Trio



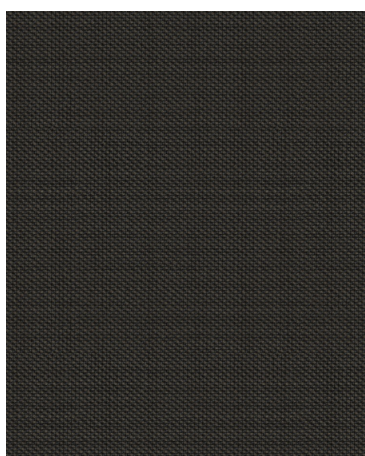
Cassonade Beige

TR03



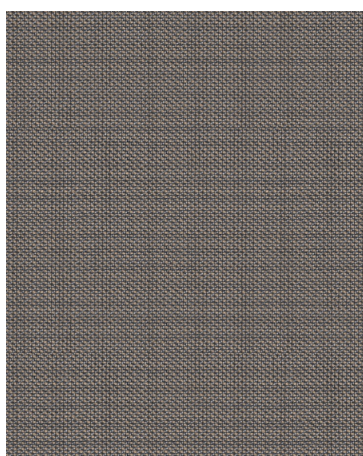
Mist Grey

TR01



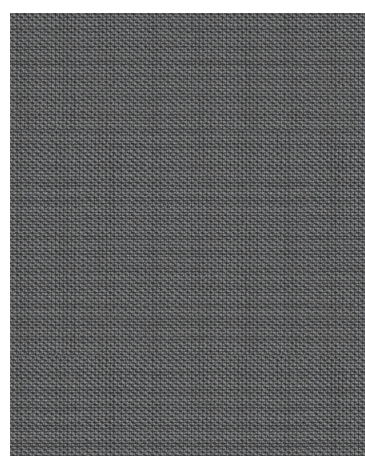
Licorice Black

TR06



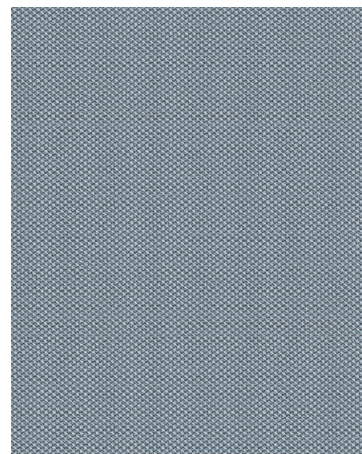
Nutmeg Beige

TR04



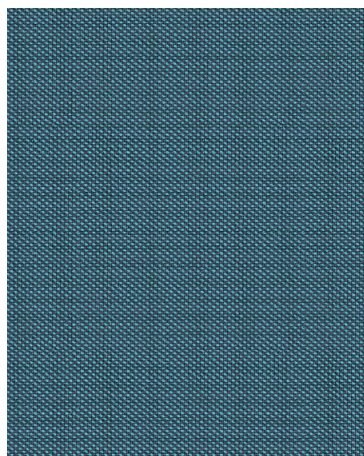
Stone Grey

TR02



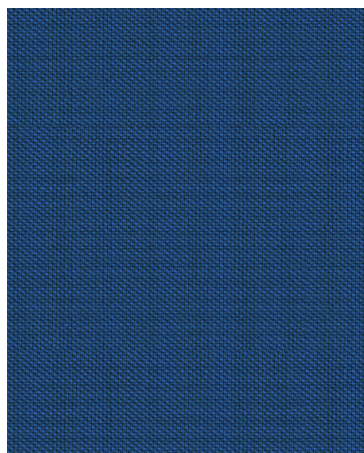
Ice Blue

TR11



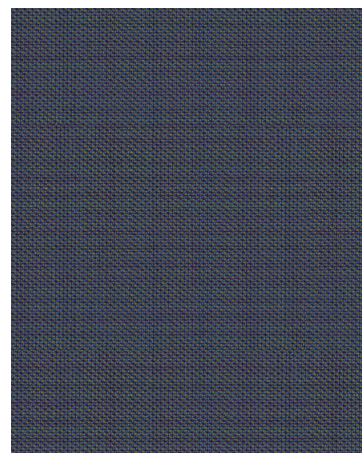
Coastal Oasis

TR18



Deep Sea

TR19



Brown Frost

TR15

Steelcut Trio

Price Group 7

Technical Specifications

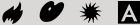
Contents: 10% Nylon, 90% Wool | Abrasion: 75,000 Martindale

Material Characteristics

Width: 55 in | Vertical Repeat: None | Horizontal Repeat: None | Backing: None

Cleaning Code: S | Warranty: 5 years

Performance Standards



	Americas Finish Code	Europe, Middle East and Africa Finish Code	Asia Pacific Finish Code	Kvadrat Color
Mist Grey	TR01	TR01	Pre-approved Special	105
Stone Grey	TR02	TR02	Pre-approved Special	153
Cassonade Beige	TR03	TR03	Pre-approved Special	213
Nutmeg Beige	TR04	TR04	Pre-approved Special	253
Licorice Black	TR06	TR06	Pre-approved Special	383
Ice Blue	TR11	TR11	Pre-approved Special	713
Brown Frost	TR15	TR15	Pre-approved Special	883
Coastal Oasis	TR18	TR983	Pre-approved Special	983
Deep Sea	TR19	TR746	Pre-approved Special	746