

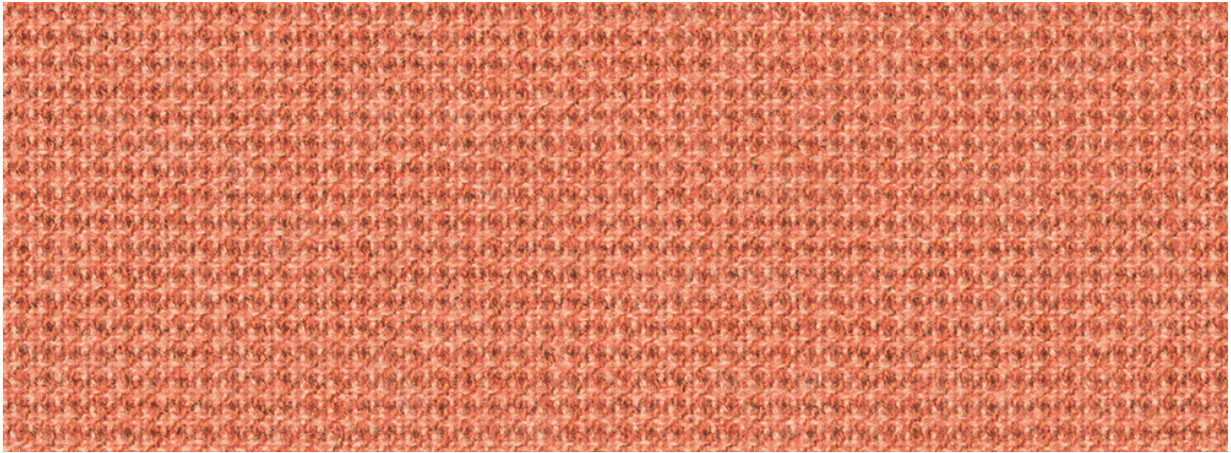
# Softnext

SoftNext is 100% post-consumer recycled polyester. This textile can be used across a range of products including both seating and vertical applications. SoftNext is a new textile that is both visually soft and soft to the touch. It provides subtle color mixing with a beautiful heathered texture and matte finish.

#### Disclaimer

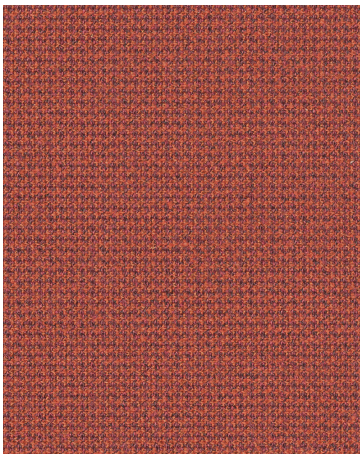
There may be variation in color, texture, and finish between this sample and the actual product.

# Softnext



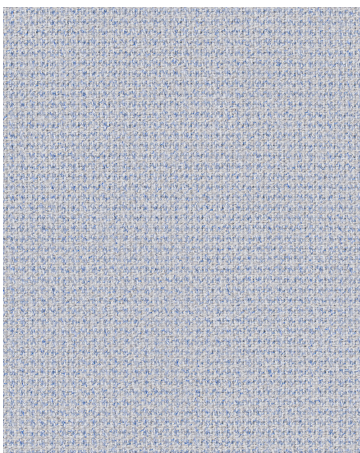
Cinnabar  
V13 S2 WB

5H38



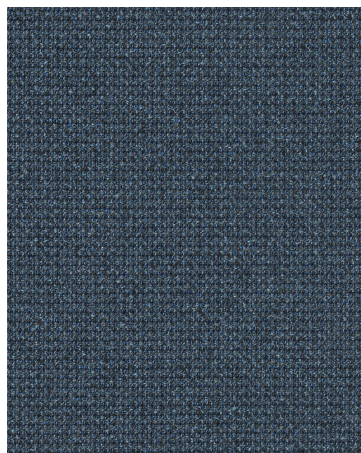
Burnt Umber  
V14 S2 WI

5H37



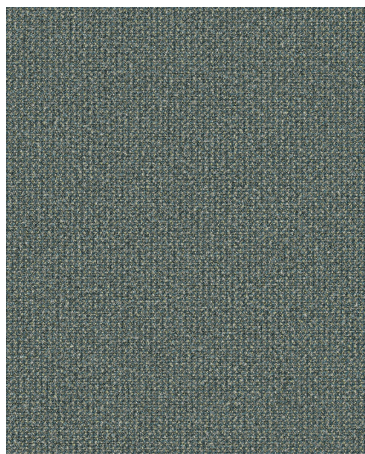
Blue Mica  
V14 S7 WN

5H35



Midnight  
V15 S4 WR

5H34



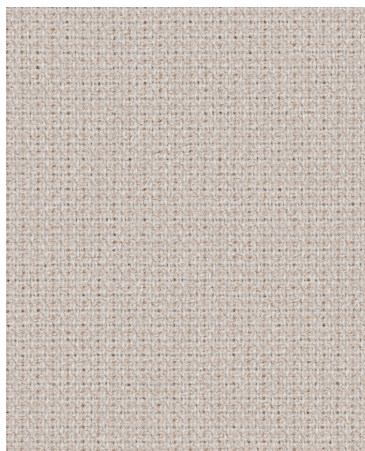
Jade  
V11

5H36



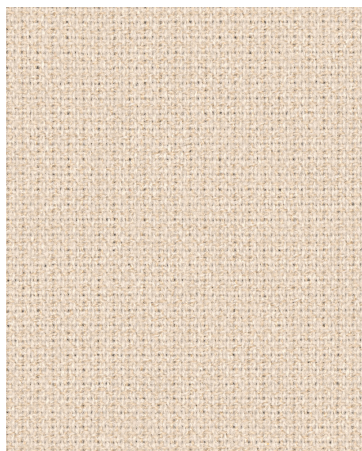
Foggy Night  
V15 S7 WU

5H28



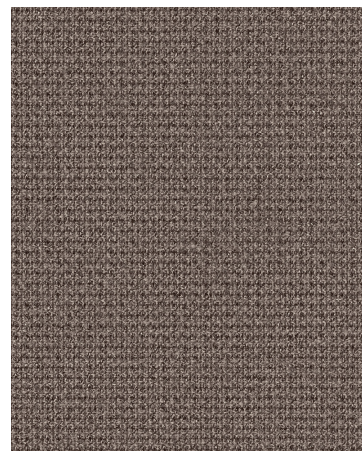
Clay  
V16 S6 WAB

5H31



Sandstone  
V16 S5 WAA

5H32



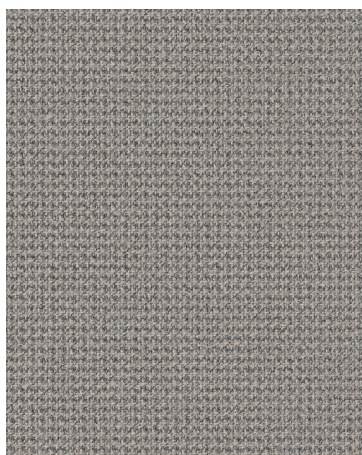
Mocha  
V16 S8 WAD

5H30



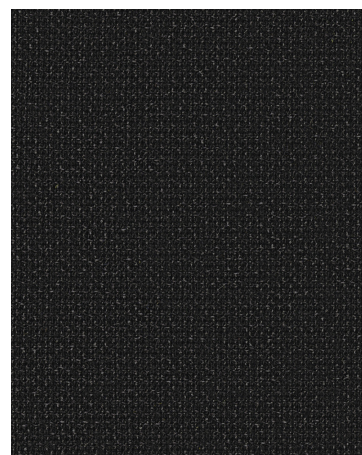
Chalk  
V16 S1 WW

5H33



Greystone  
V16 S4 WZ

5H29



Obsidian  
V15 S6 WT

5H27

# Softnext

## Price Group 2

### Technical Specifications

Contents: 100% Total Recycled Content; 100% Post-Consumer Recycled Polyester

Abrasion: 60,000 Double Rubs | Faber Abrasion: 1,600 Cycles

### Material Characteristics

Width: 55 in | Vertical Repeat: None | Horizontal Repeat: None | Backing: None

Cleaning Code: WS | Warranty: 12 years

### Performance Standards



	Americas Finish Code	Europe, Middle East and Africa Finish Code	Asia Pacific Finish Code
Obsidian	5H27	–	–
Foggy Night	5H28	–	–
Greystone	5H29	–	–
Mocha	5H30	–	–
Clay	5H31	–	–
Sandstone	5H32	–	–
Chalk	5H33	–	–
Midnight	5H34	–	–
Blue Mica	5H35	–	–
Jade	5H36	–	–
Burnt Umber	5H37	–	–
Cinnabar	5H38	–	–