



NEXT

NEXT



PROGRESSIVELY DESIGNING THE FUTURE



CONCEPTUAL DEVELOPMENT

ORTHOGONAL



Individuality is represented through a single piece of steel and represents the "ME" factor.



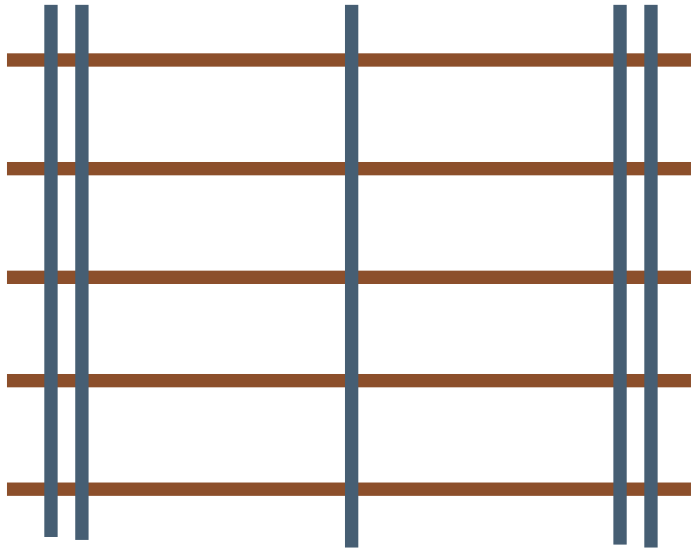
REPETITION



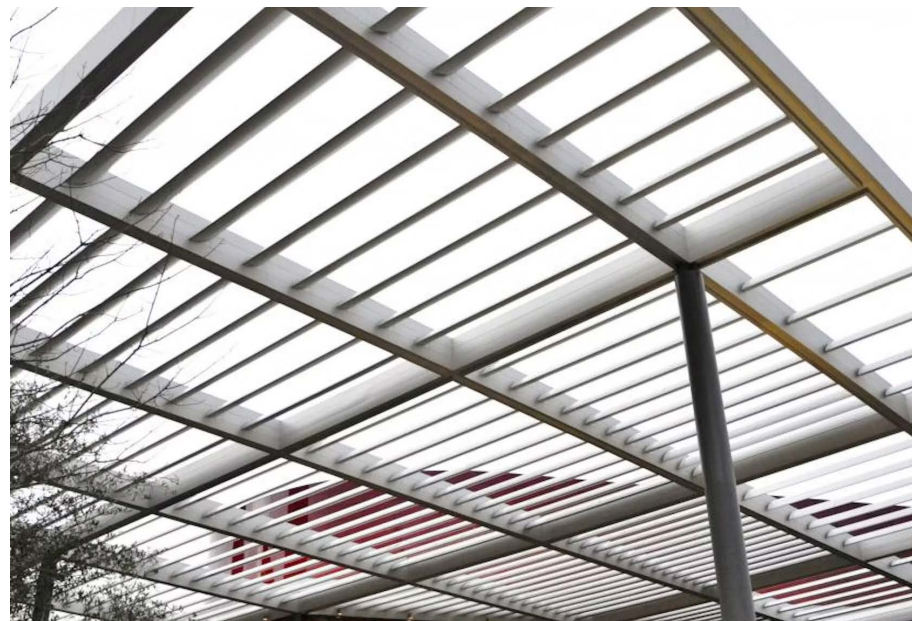
The repetition found within structural elements, represents the "WE" factor. This is shown as a cluster of who are unique in their own way.



GRID



The grid structure represents not only the architecture, but NEXT as a whole as it connects. the ME + WE.



PATINA METHODOLOGY

RAW STEEL

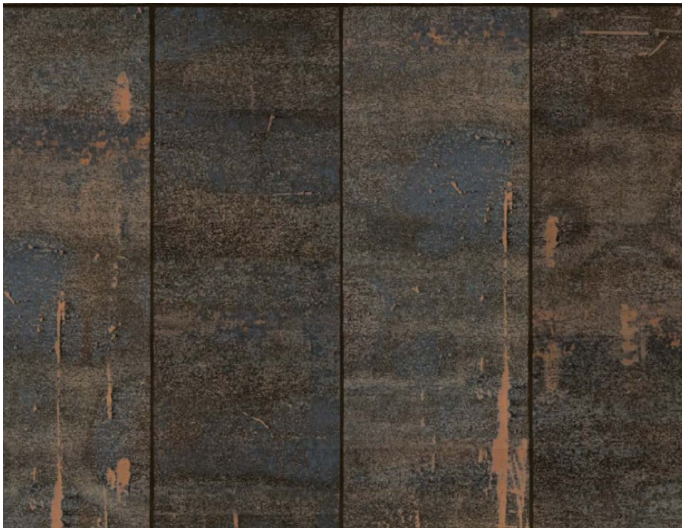


Within NEXT Dallas' location, the early stage of **raw steel** is represented through the textiles of the office furniture on the first Level.



Blue represents **confidence & stability**.

AGING STEEL



The next aging stage of the steel begins to release **brown** hues into the space, which is represented through the different selections of wood within the entire office.

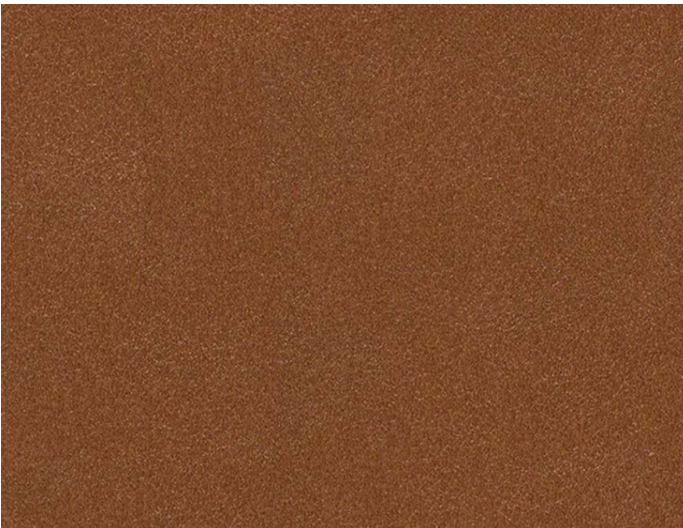


Brown represents **warmth & wisdom**.

AGED STEEL



During the final stages of oxidation, steel patinas, releasing beautiful shades of **burnt orange**. This stage is represented throughout the second level of the office.

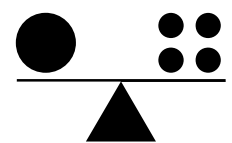


Orange represents **ambition & creativity**.

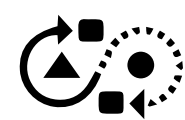
DESIGN PRINCIPLES



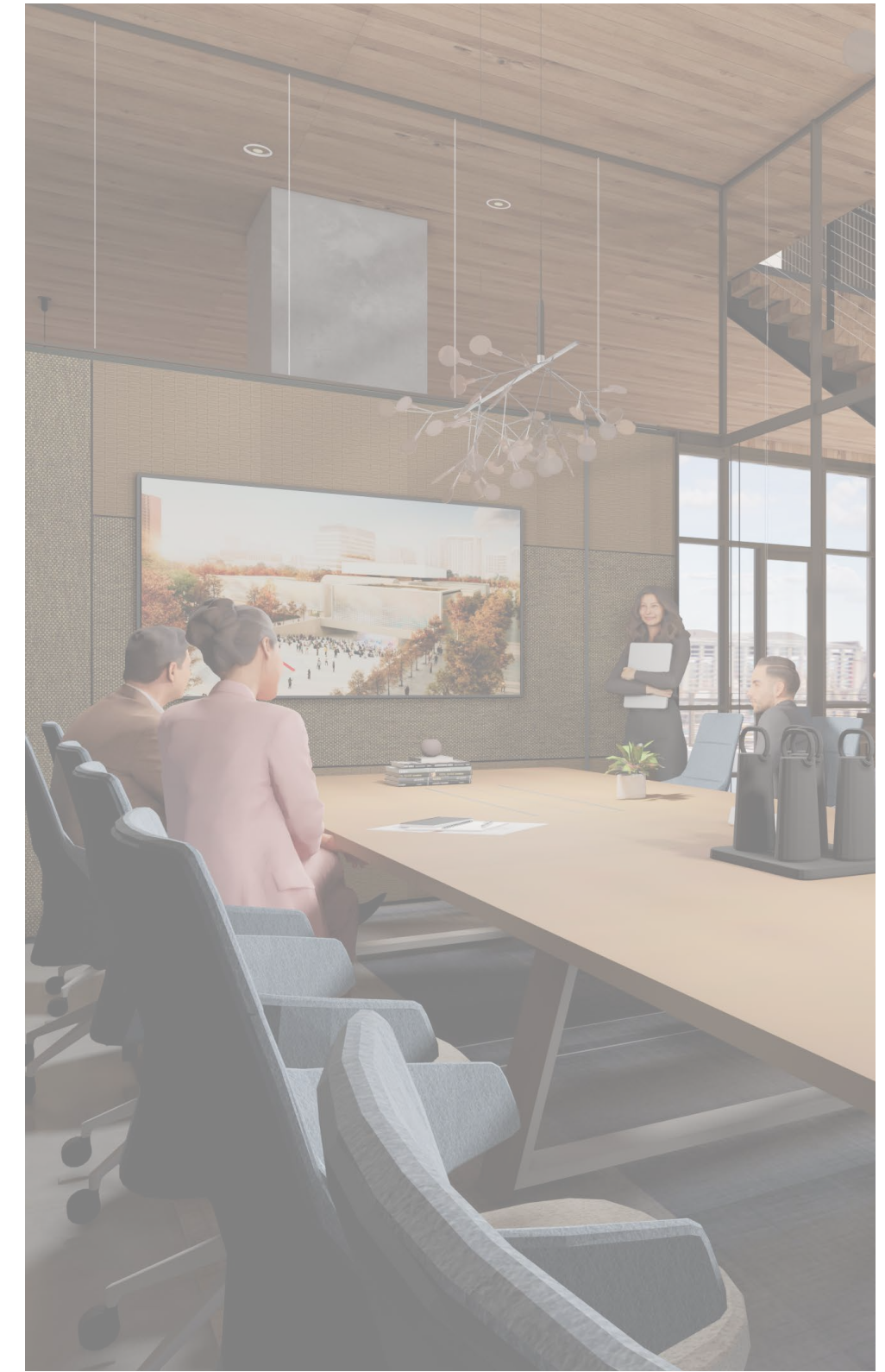
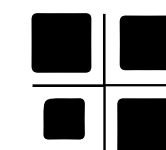
ME + WE



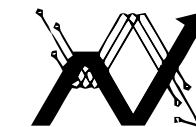
FIXED TO FLUID



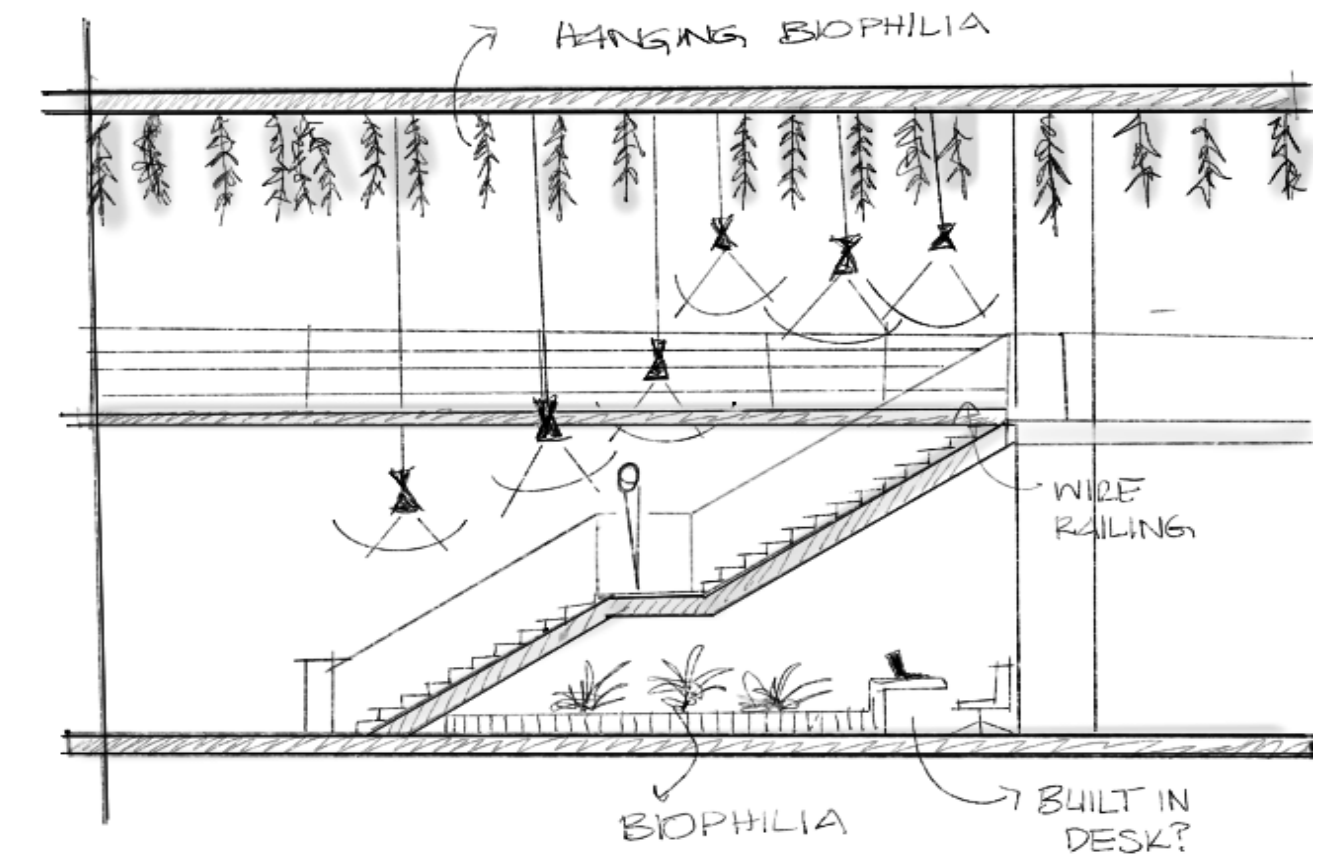
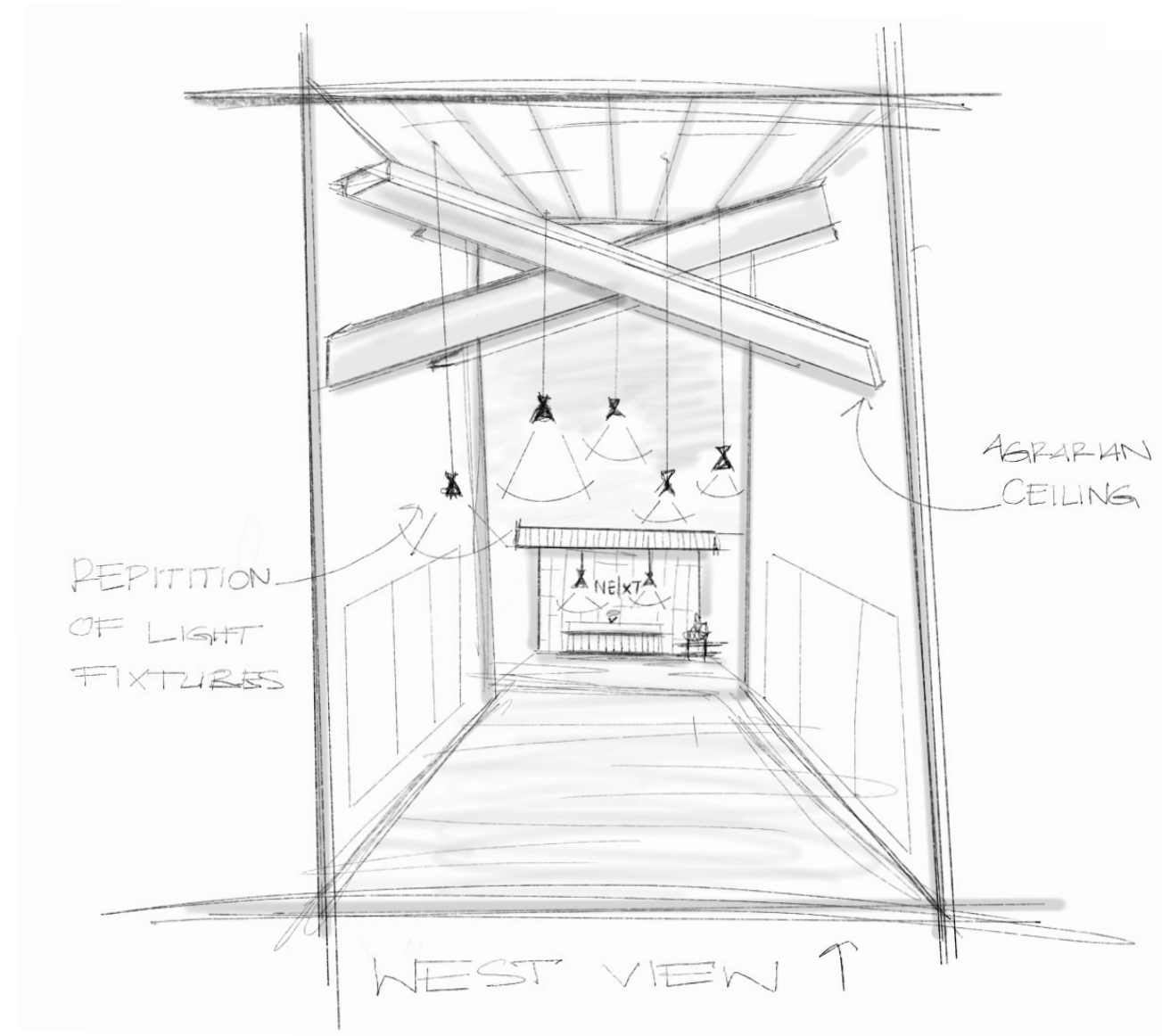
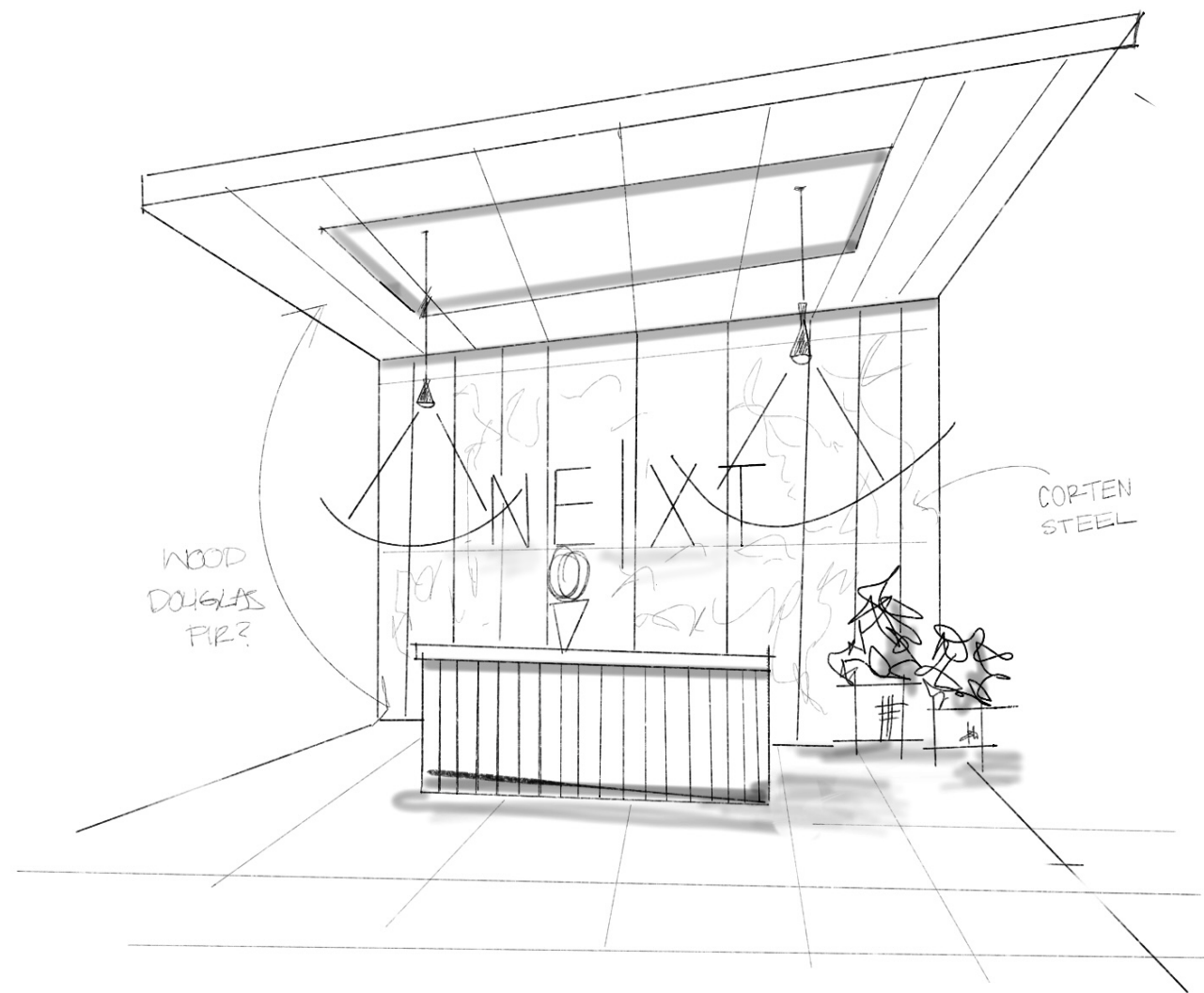
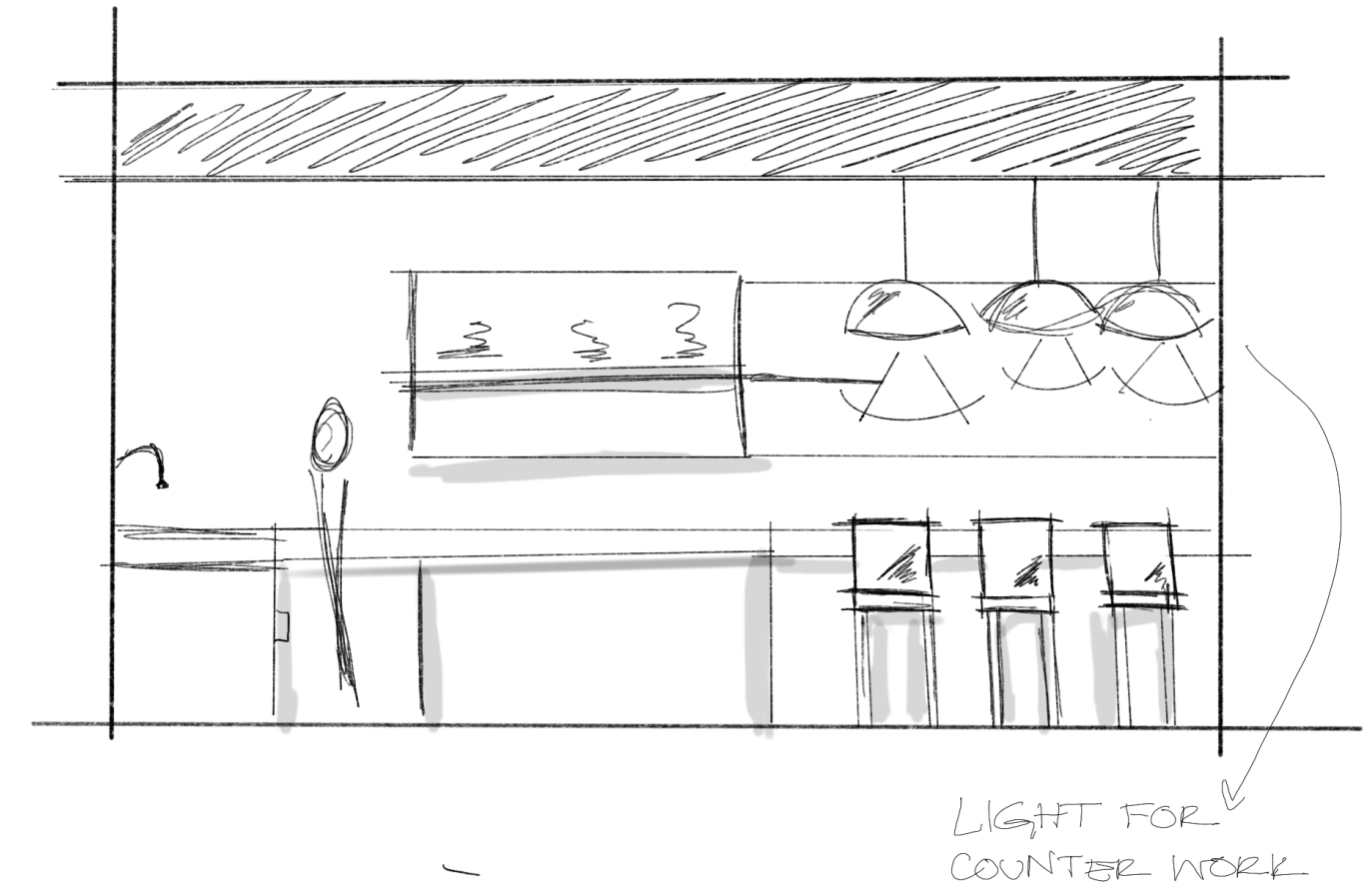
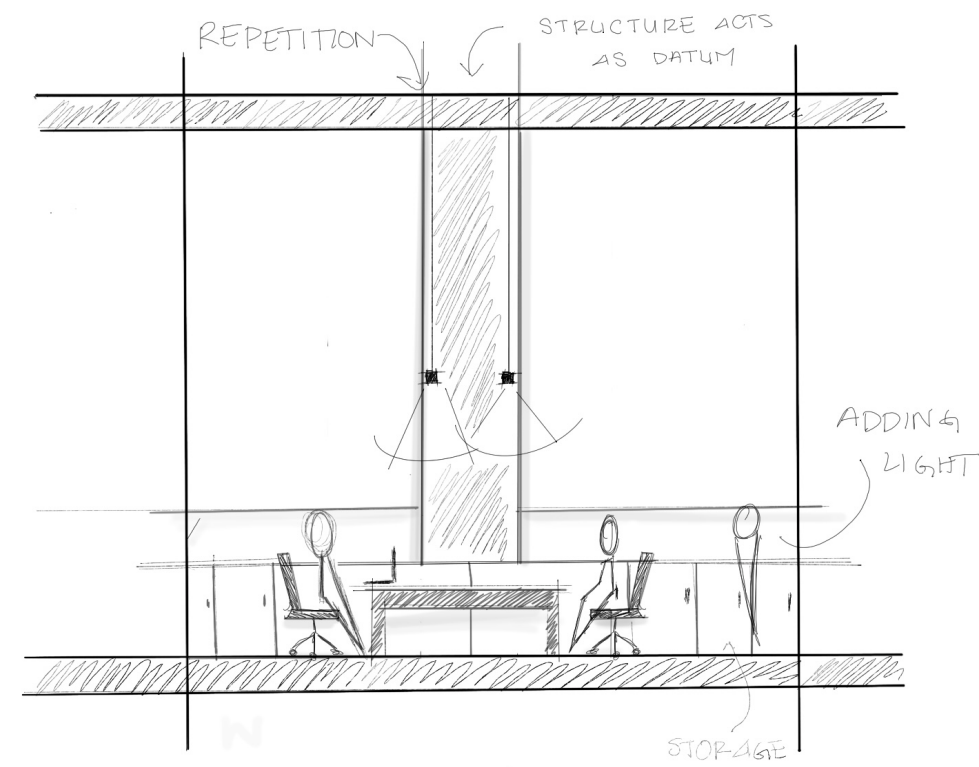
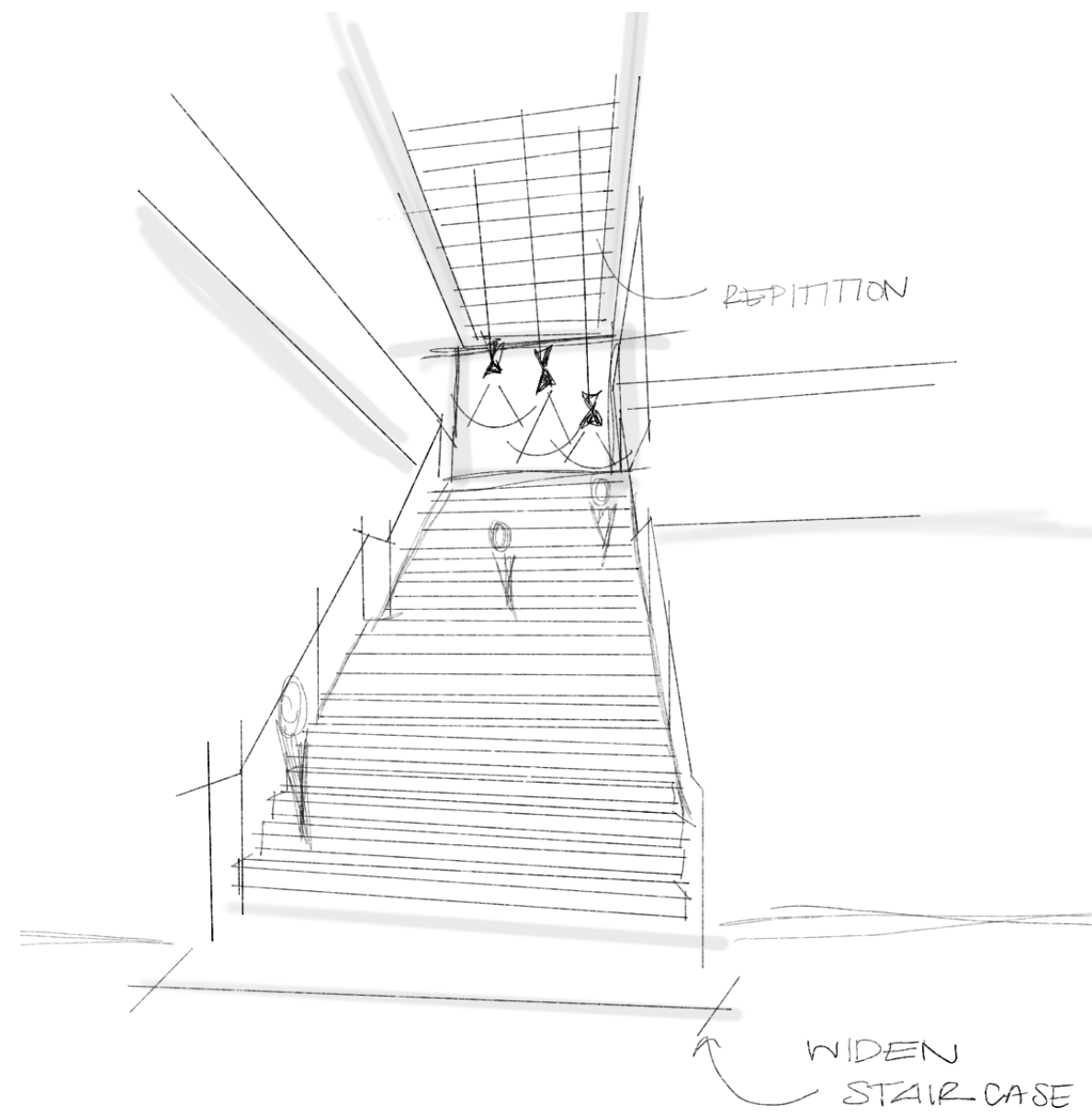
OPEN & ENCLOSED



BRAIDING DIGITAL & PHYSICAL

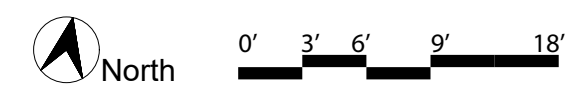


CONCEPT DEVELOPMENT SKETCHES & IDEATION

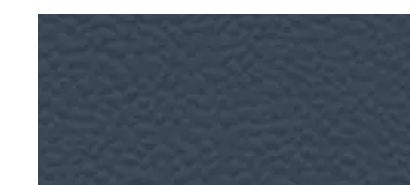




FLOOR PLAN



- | | | | | | |
|---|------------------------|----|--------------------------|----|-------------------|
| 1 | Reception | 9 | Huddle Room | 17 | Managing Director |
| 2 | Work Stations | 10 | Meeting Room | 18 | Terrace |
| 3 | Studio Director- Corp. | 11 | Phone Room | 19 | Lift |
| 4 | Studio Director- Edu. | 12 | Mother's Room | | |
| 5 | Studio Director- H.C | 13 | Wellness Room | | |
| 6 | Design Director- H.C | 14 | Client Presentation Room | | |
| 7 | Design Director- Edu. | 15 | Resource Center | | |
| 8 | Design Director- Corp | 16 | Sustainability Manager | | |



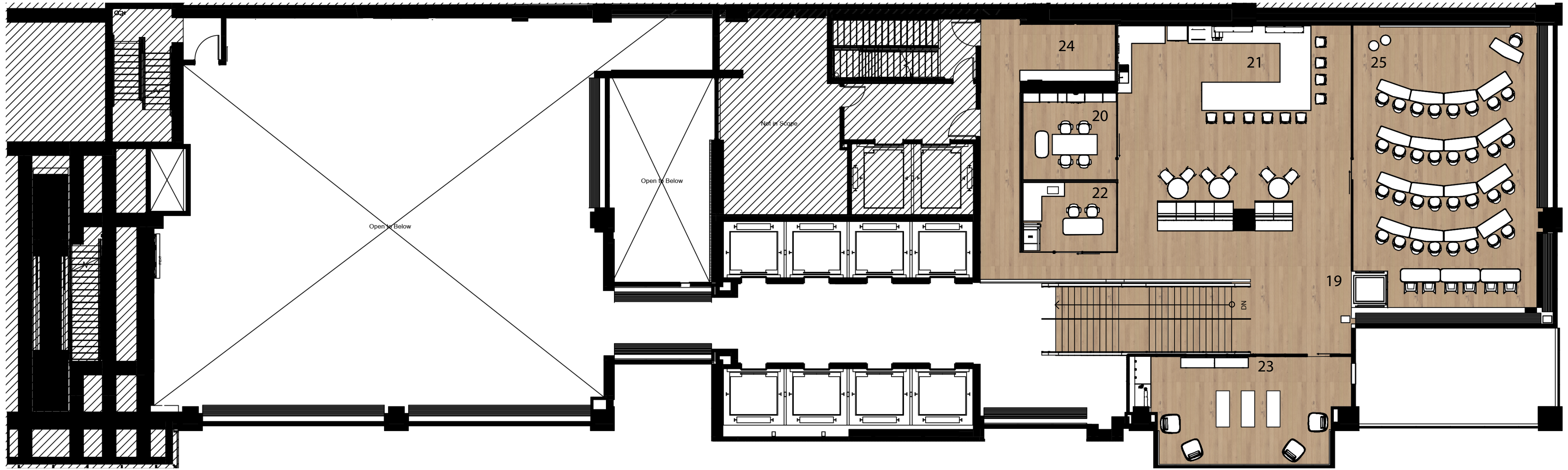
Rubber Tiles



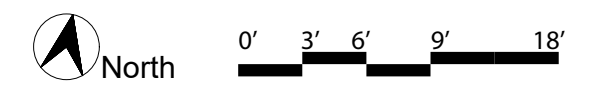
Oak Flooring



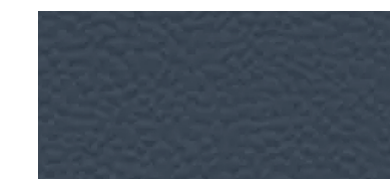
Polished Concrete



MEZZANINE



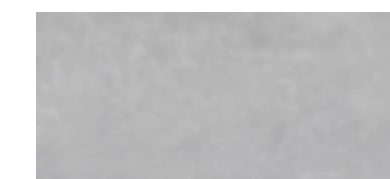
- 19 Lift
- 20 Design Library
- 21 Work Cafe
- 22 Innovation Lab & Model Shop
- 23 Wildcard - Stretch & Serenity Room
- 24 Storage
- 25 Training Room



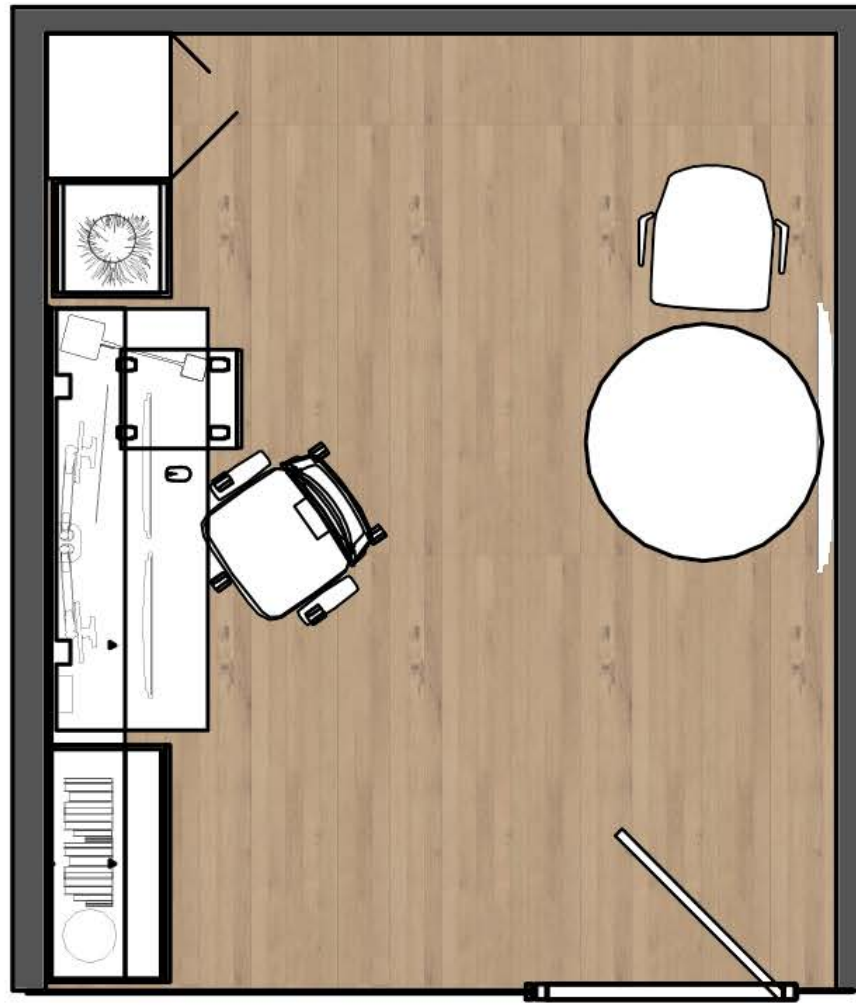
Rubber Tiles



Oak Flooring

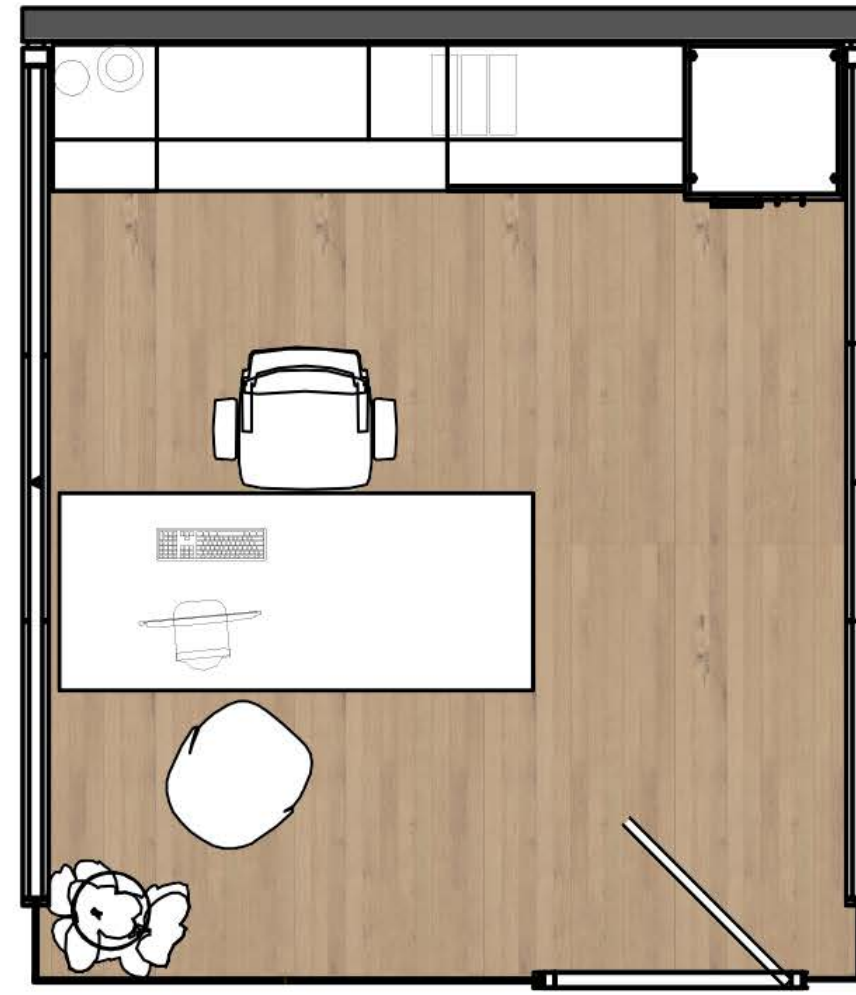


Polished Concrete



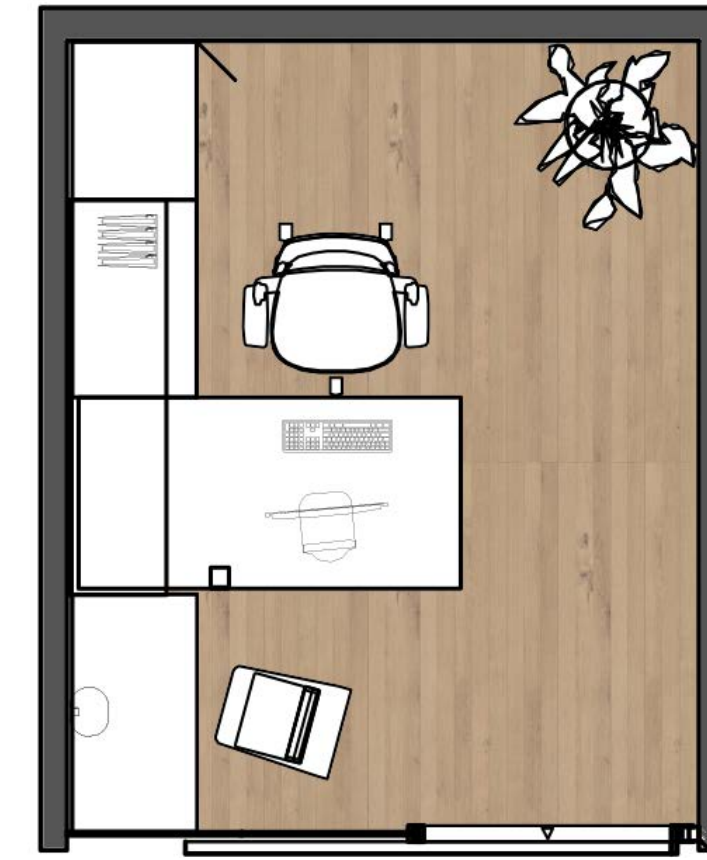
A - OPTION ONE

This layout option provides a private space for work as it is shielded, while still including an extra work area.



B - OPTION TWO

This layout option provides a great balance of an open and enclosed working environment as partial everwalls allow a glimpse of the outside office environment.



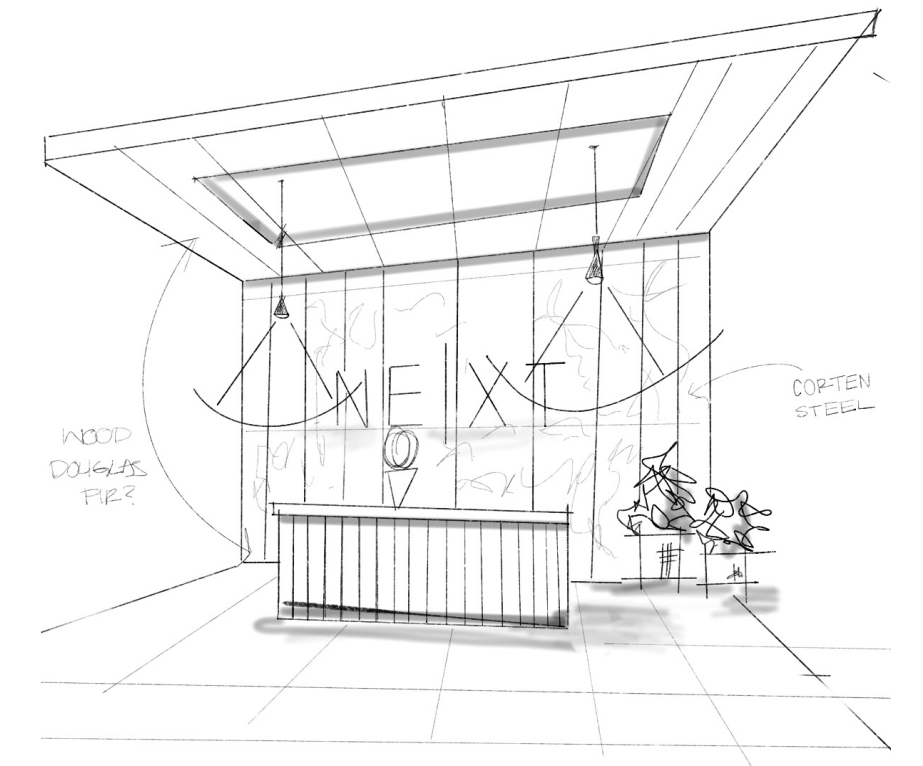
C - OPTION THREE

This layout option provides a great balance of open and enclosed collaboration work area in a smaller capacity.

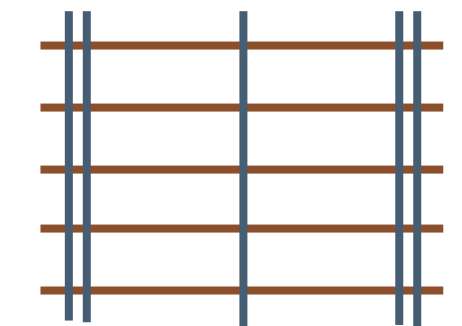
PRIVATE OFFICE LAYOUTS



VIEW FROM ELEVATOR LOBBY TO RECEPTION DESK



The Corten Steel that is used in the reception area foreshadows the hues of the **blue** & **orange** hues that will be used within the levels.



Zio Lounge - Moooi



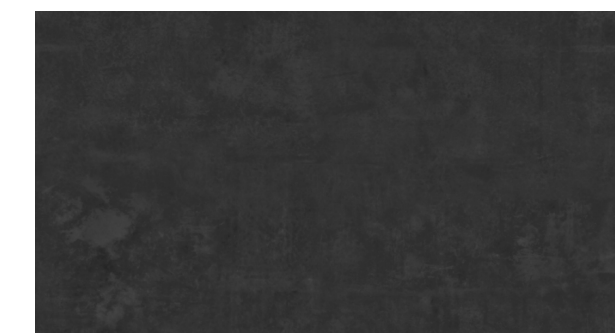
String Light - Flos



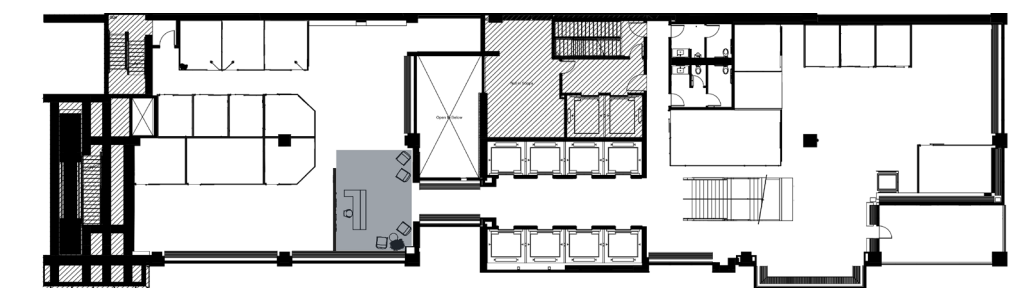
Aged Corten Steel



Stained Douglas Fir

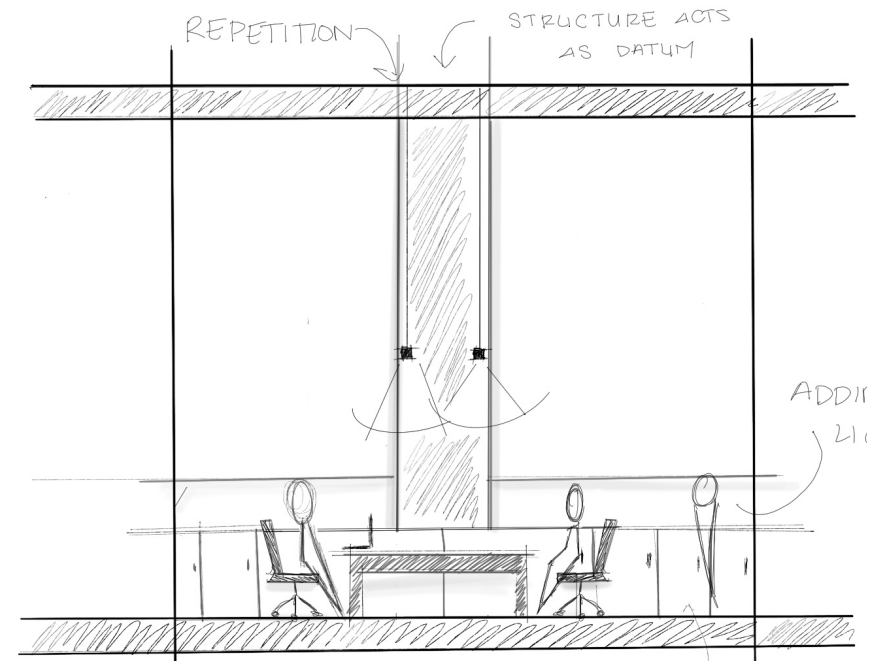


Polished Concrete





VIEW OF WORKSTATIONS



These work stations allow easy access to work alongside colleagues and are adjacent to the private offices.



Amia Chair



WorkValet Storage



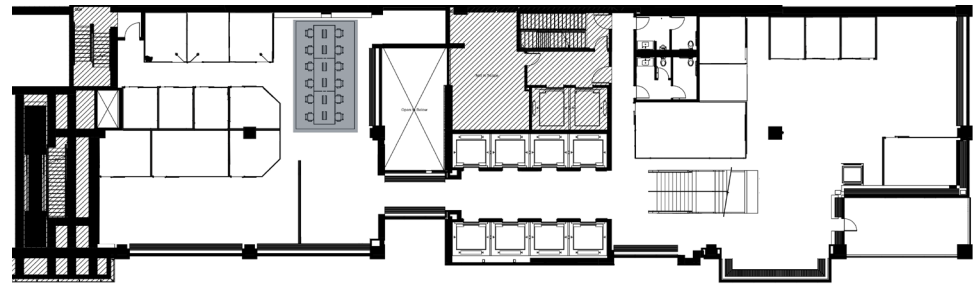
Linear Drop Light



Black Wood Vinyl

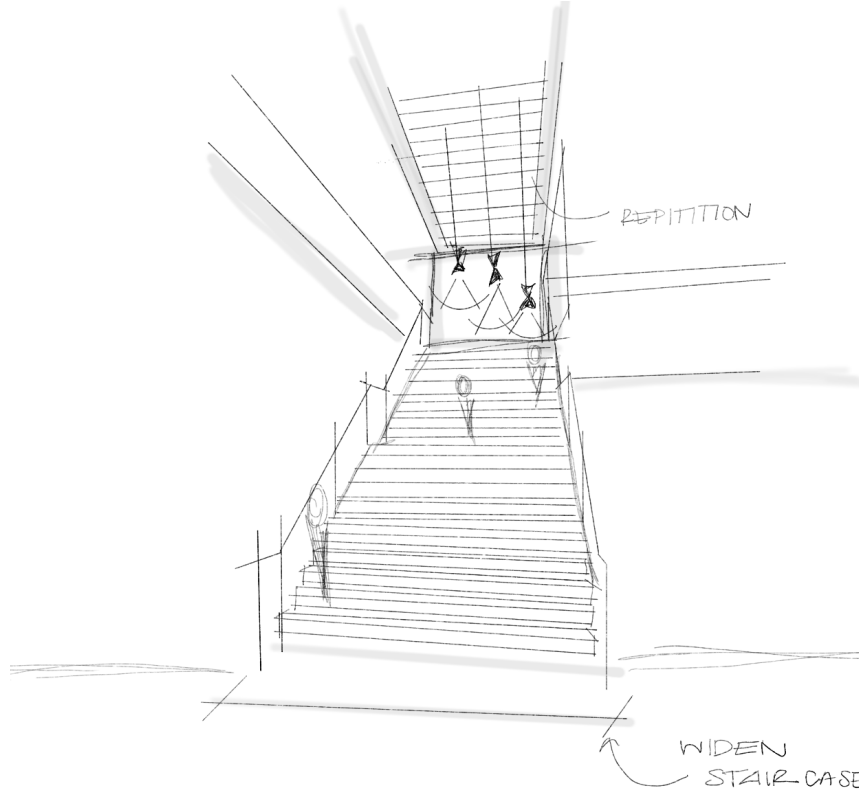


Brown Corrugated Aluminum

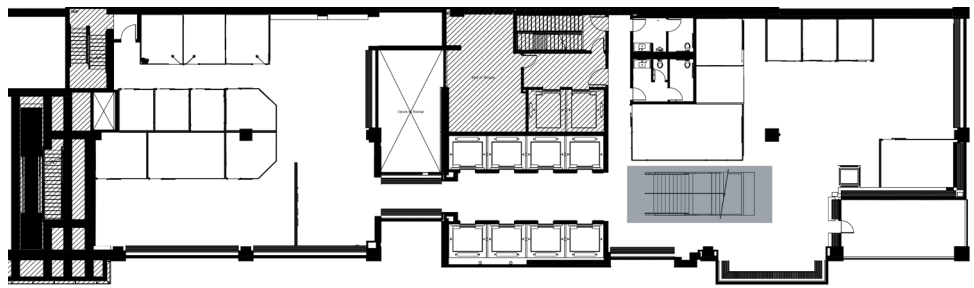
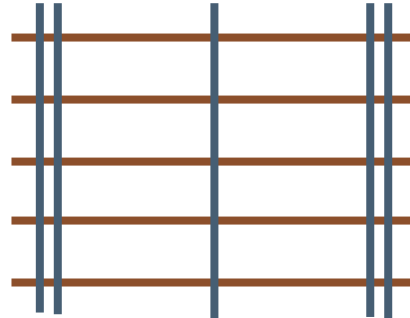




VIEW TOWARDS MONUMENTAL STAIRCASE



The repetition within the stairs is also mirrored through the steel on the ceiling as well as the light fixtures that are descending over it .



Massaud Seating - Coaleese



Heracleum - Mooi



String Light - Flos



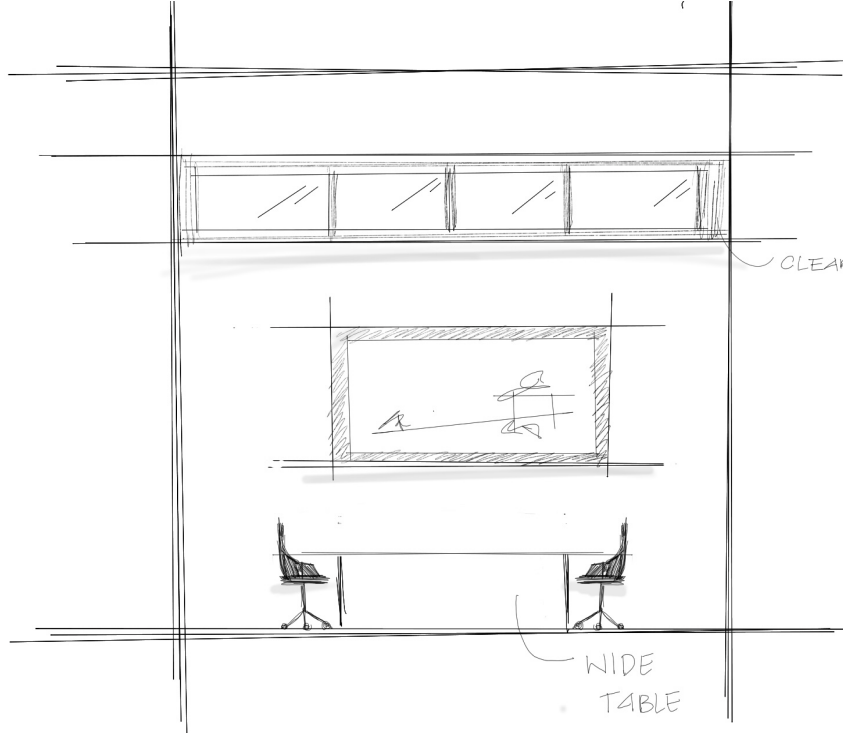
Fronda Chair- Mattiazzi



Trestle Table - Viccarbe



VIEW FROM CLIENT PRESENTATION ROOM



Glass everwalls are a great design solution to allow natural light into the presentation room.

The extended glass also gives the occupants the opportunity to appreciate the monumental staircase.



Massaud Seating - Coaleese



Heraclum - Mooi



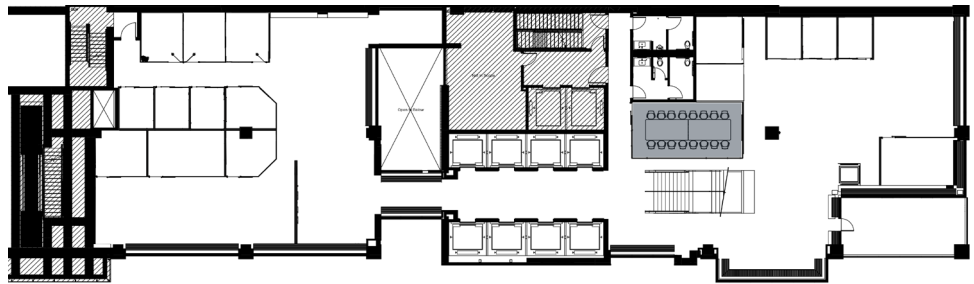
Flex Mobile Power



Coffee - Velocity

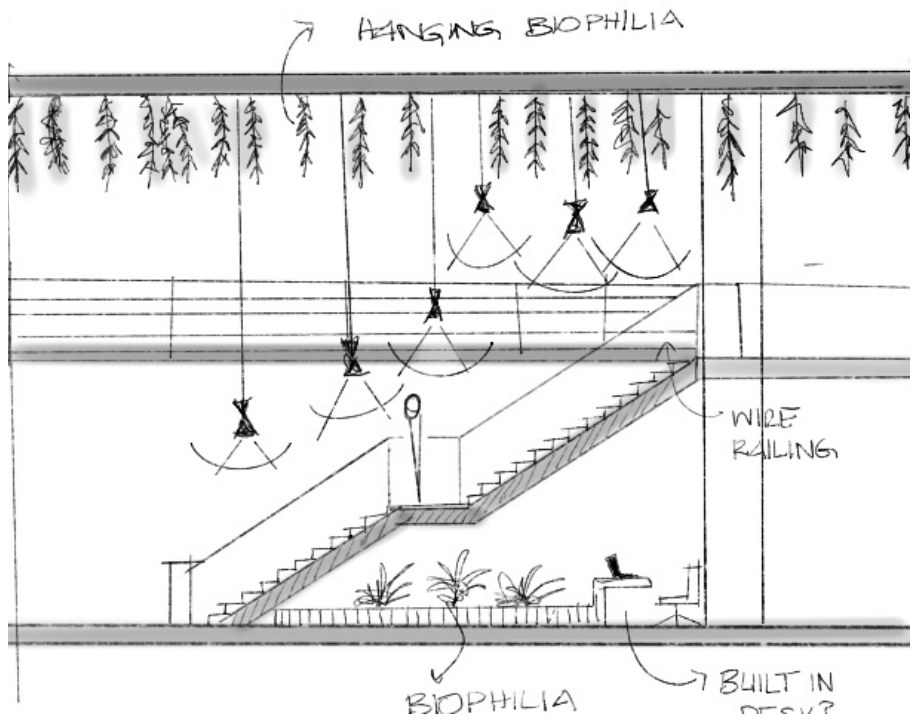


Cesta - Woven

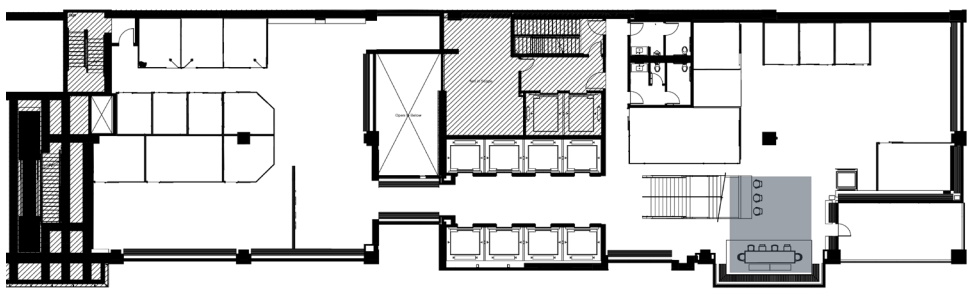




VIEW OF BUILT-IN DESKS



Built-in workspaces solve issues of clearances under the staircase. Glass both completes the barrier protecting the overhang hazard as well as covers the open risers. Biophilia is incorporated to bring the outdoors into the space.



Uncino Chair - Mattiazzi



Fronda Chair - Mattiazzi



Stained Douglas Fir



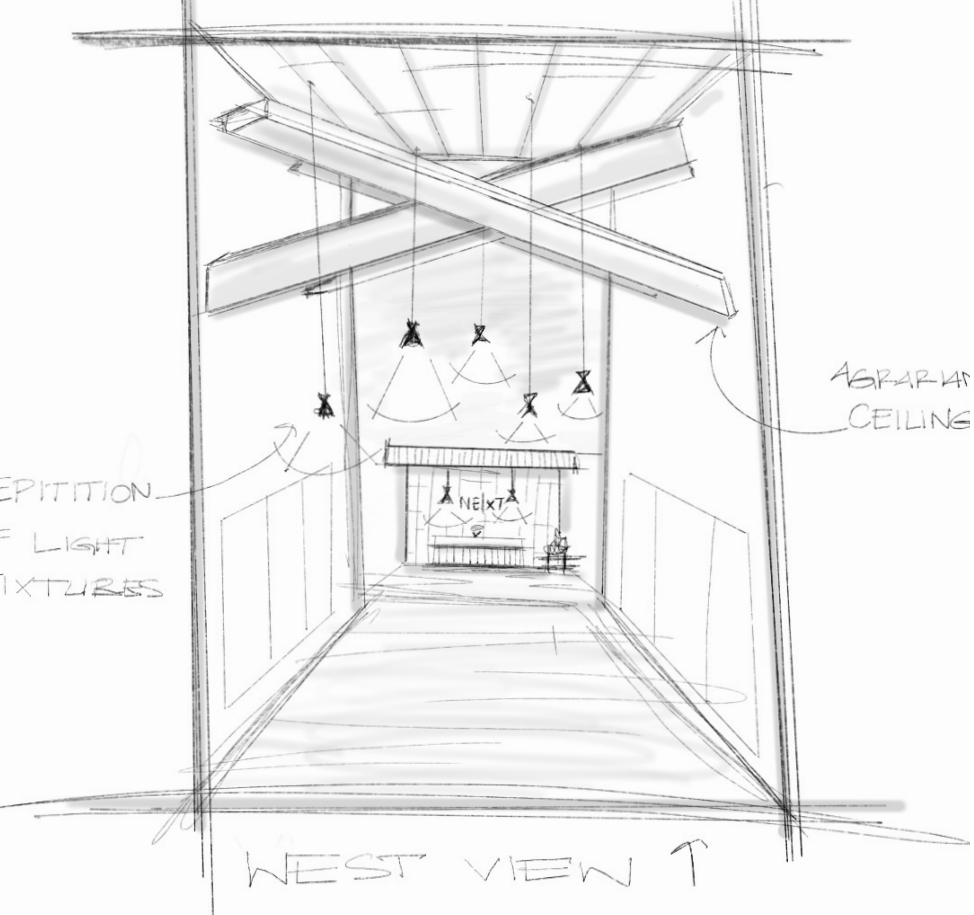
Oak Wood Vinyl



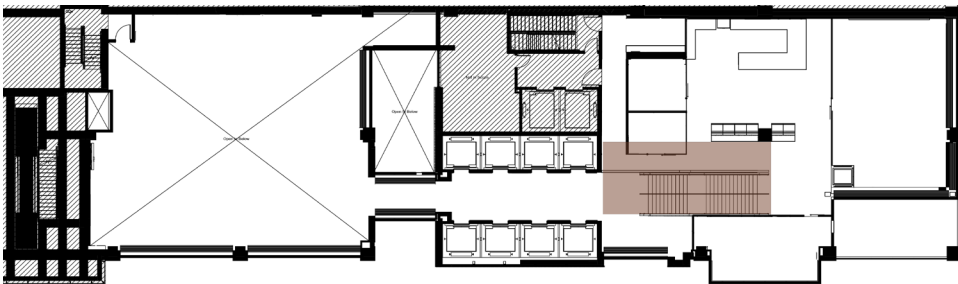
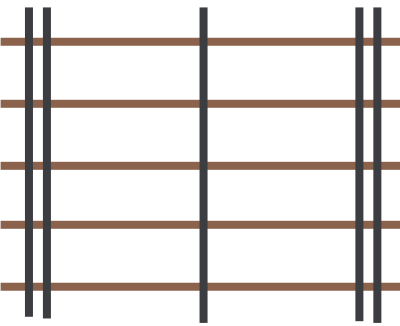
Polished Concrete



VIEW FROM MEZZANINE



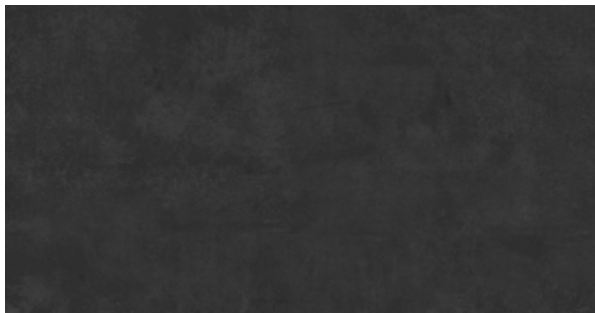
The interconnected steel structure on top of the elevator lobby connects both levels of the space.



String Light - Flos



Crew Chair



Steel



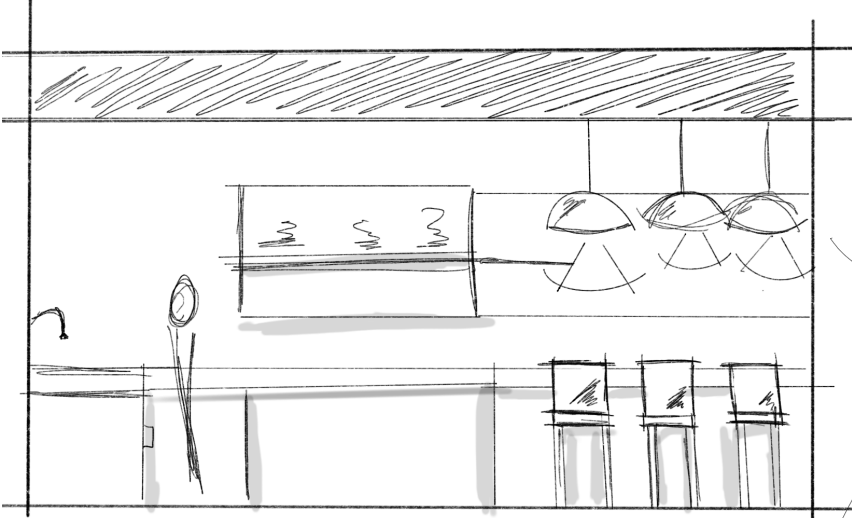
Oak Wood



Western Red Cedar

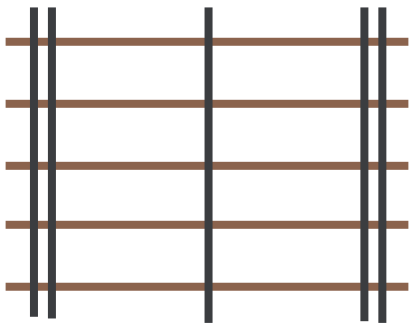


VIEW TOWARDS WORK CAFE



This communal area allows individuals to take a break or change up their working posture throughout the day.

The grid is integrated within the ceiling to relay sense of **interconnection** and **harmony**.



Campfire Collection



Nooi Chair



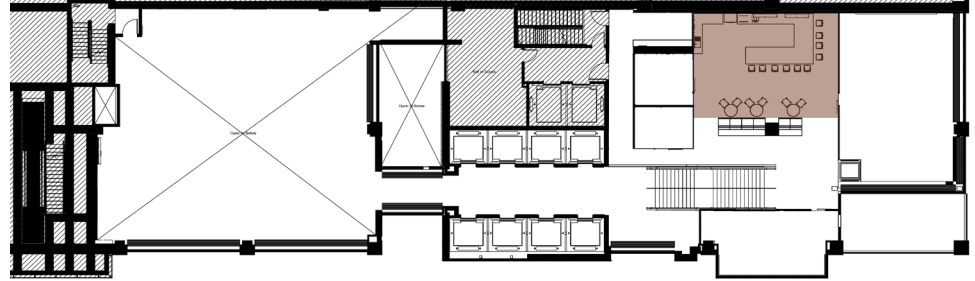
Beat Pendant - Tom Dixon



Marien 152 Stool



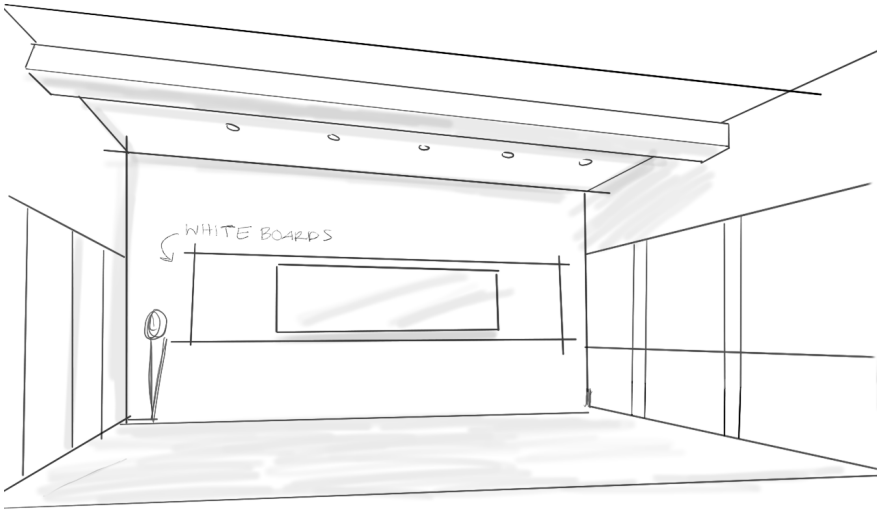
Polished Concrete



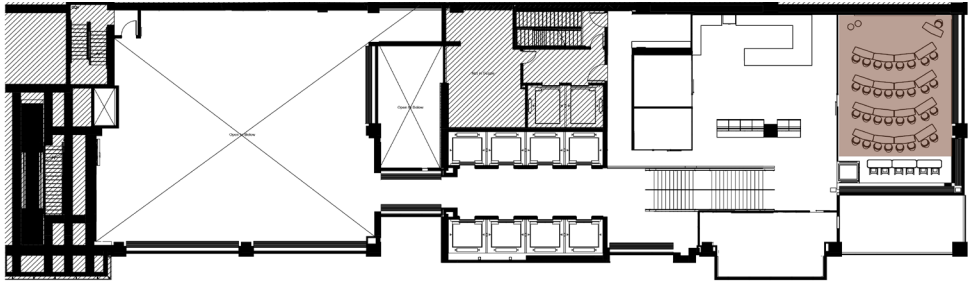
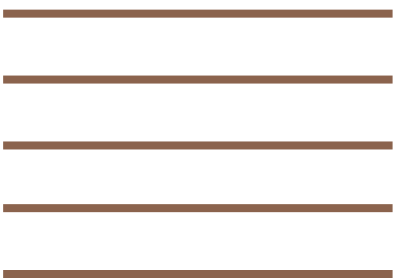


NEXT

VIEW FROM TRAINING CLASSROOM



The training room encourages workers to come **together** and foster a learning environment. Adjacency to open areas and the cafe relay a sense of **sociability & unity**.



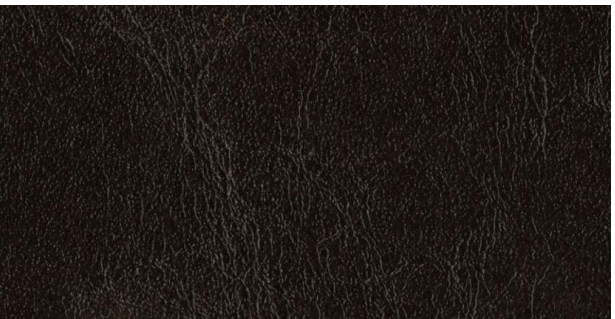
Node Chairs



Verb Desk



Beat Pendant - Tom Dixon



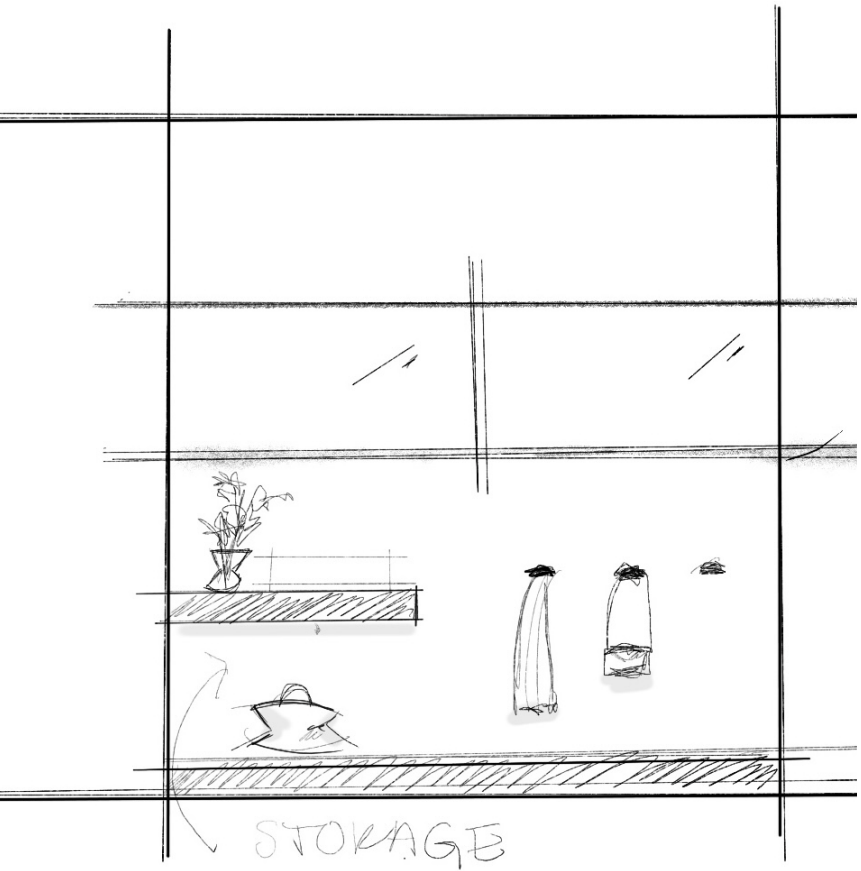
Alcazar Vinyl



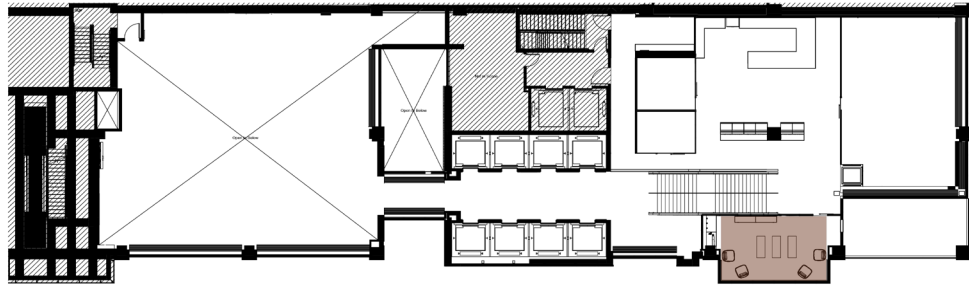
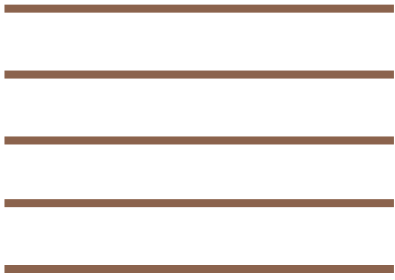
Glimmer - Woven



VIEW OF WILDCARD SPACE - STRETCH & SERENITY ROOM



The wildcard space provides employees the opportunity to find **peace** and an outlet to **decompress**.



Hosu - Coalesse



Trestle Bench Desk



Glimmer - Woven



Western Red Cedar



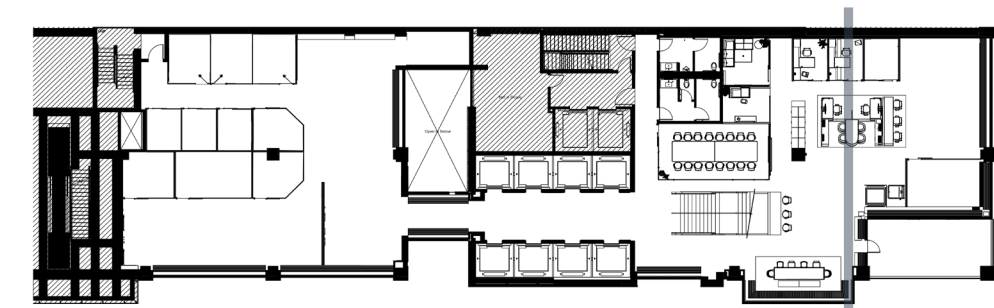
Brown Corrugated Aluminum



SECTION PERSPECTIVE FACING WEST



This view displays the dynamic between the levels and the hues of the spaces. The first level offers a mixture of open, shielded and enclosed spaces. The second level encourages occupants through flexible and collaborative areas. Together both the textiles and overall design symbolize the progressive stance NEXT Dallas' stands for.





NEXT

NEXT