

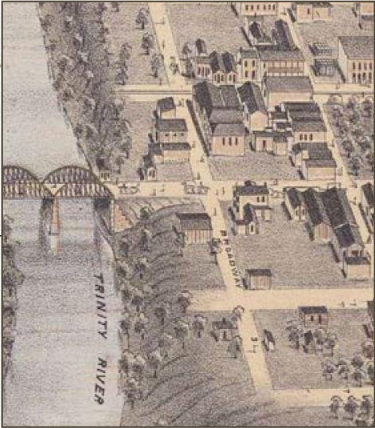


NEXT

Architecture
&
Design Studio

SITE & RESEARCH

Dallas



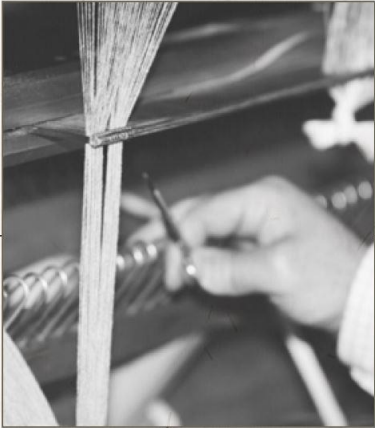
Map of Dallas from 1872

Early 1900s



Dallas Cotton Millworkers in 1913

Textile Factories



Textile artisan working at the loom

THE
POEM



*The Mill Was Made of Marble
I dreamed that I had died
And gone to my reward
A job in heaven's textile plant
On a golden boulevard.*

*The mill was made of marble
The machines were made out of gold
And nobody ever got tired
And nobody ever grew old*

*The mill was built in a garden
No dust or lint could be found
The air was so fresh and fragrant
With flowers and trees all around*

*It was quiet and restful in heaven
There was no clatter or boom
You could hear the most beautiful music
As you worked at spindle and loom*

*There was no unemployment in heaven
We worked steady all through the year
We always had food for the children
We never were haunted by fear*

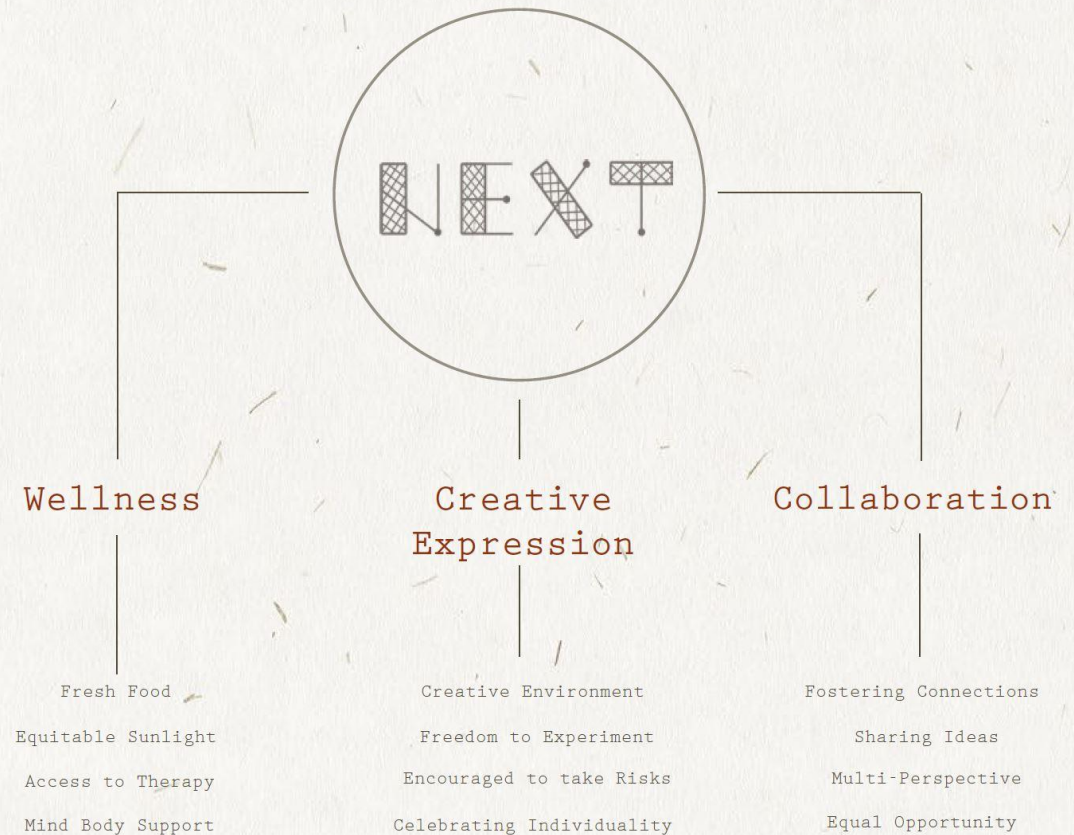
*When I woke from this dream about heaven
I knew that there never could be
A mill like that one down below here on earth
For workers like you and like me.*

- Joe Glazer (Dallas Union Millworker)

BRAND ETHOS

N E X T is an architecture and design company that values **wellness, creative expression, and collaboration** in the workplace.

Given the demanding nature of the architecture and design industry, N E X T prioritizes supporting its' employees' minds and bodies. Additionally, with design being a creative industry, N E X T welcomes and fosters experimentation as a part of its process. Finally, collaboration is recognized as an integral aspect of N E X T's culture and ethos.



SPACE AND CONNECTIVITY

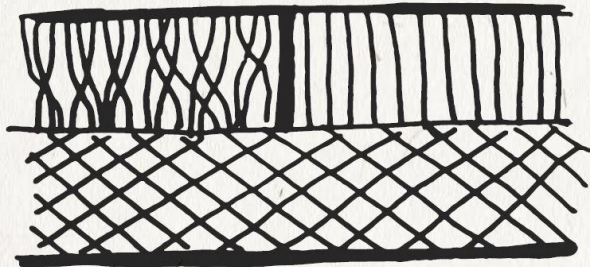
The process of making textiles—from thread to fabric—is a metaphor for *human connection and collaboration.*


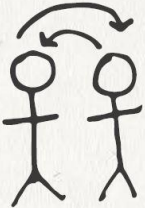
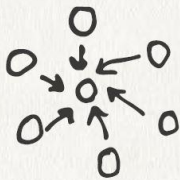
N E X T 's space is broken down into 3 types of spaces:

Connectivity by Zone

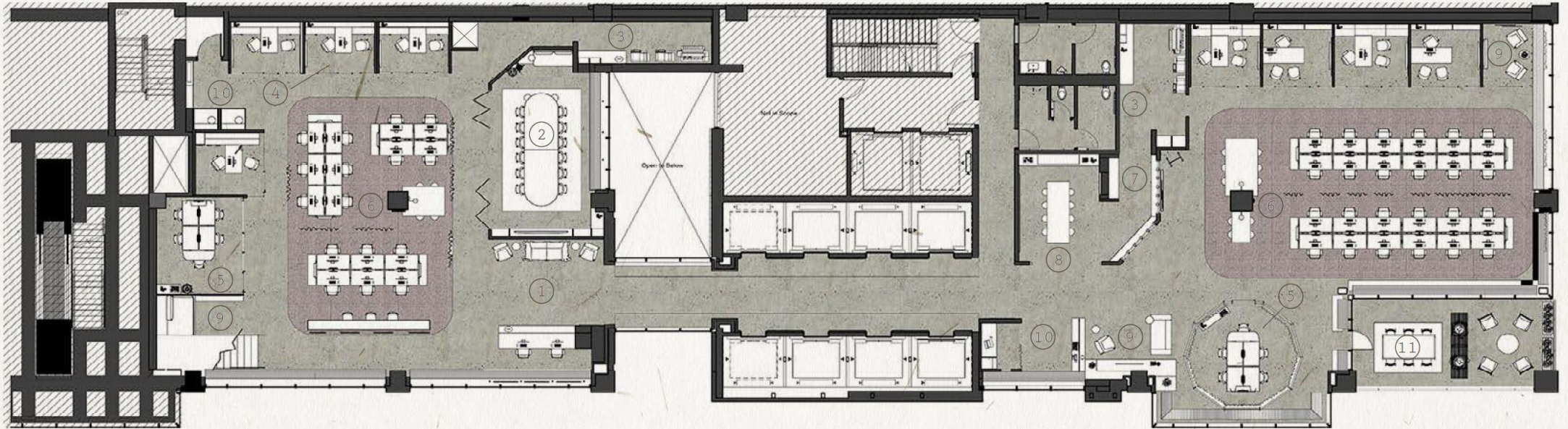
Mezzanine

3rd Floor



	X	[Grid]
Thread	Yarn	Fabric
Reflective	Social	Productive
Mother's Room Wellness Chapel Phone Room	Design Library Innovation Lab Huddle Rooms Cafe	Client Presentation Training Room Meeting Rooms Workstations
		

FLOOR PLANS



THIRD FLOOR

LEGEND

- | | | |
|-----------------------|-------------------|----------------|
| 1. Reception | 5. Meeting Room | 9. Huddle Room |
| 2. Large Meeting Room | 6. Work Area | 10. Phone Room |
| 3. Resource Center | 7. Design Library | 11. Patio |
| 4. Private Office | 8. Innovation Lab | |

FLOOR MATERIALS



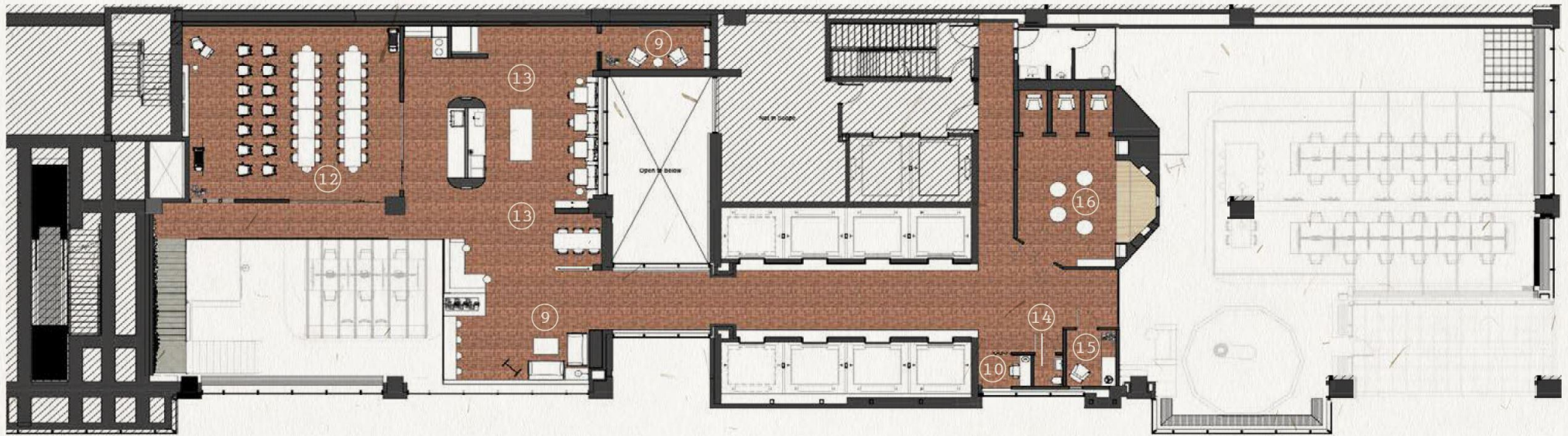
Limestone Tile



Porcelain Mosaic



FLOOR PLANS



MEZZANINE

LEGEND

12. Training Room

15. Mother's Room

13. Cafe

16. Wellness Chapel

14. Bathroom

FLOOR MATERIALS



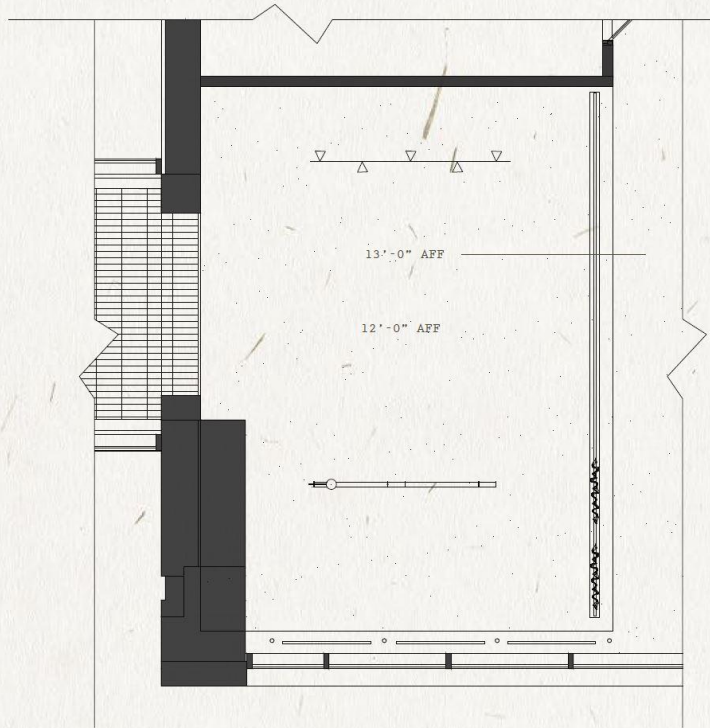
Reclaimed Brick



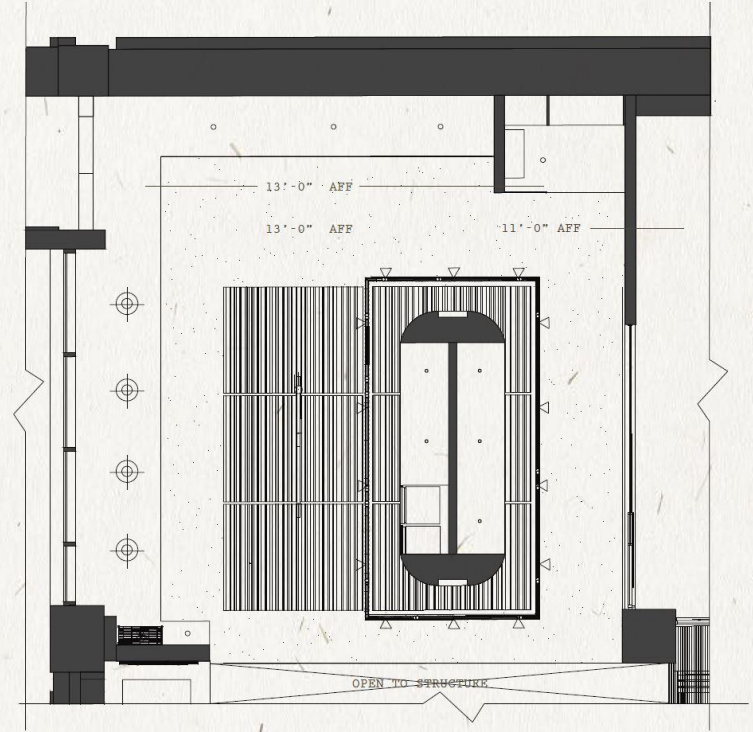
White Oak



REFLECTED CEILING PLANS

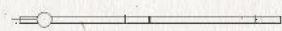


RECEPTION RCP

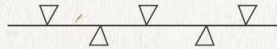


CAFE RCP

LEGEND

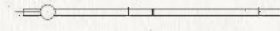


Super Line Pro Linear
Flos

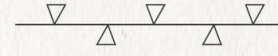


Zero Track
Flos

LEGEND



Super Line Pro Linear
Flos



Zero Track
Flos



IC Lights Suspension
Flos



3" Monopoint
Flos



INSPIRATION



Industrial



Light



Artful



Muted

Let's take a *TOUR* through the space...



NEX

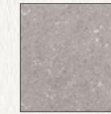
RECEPTION



Materials



*Steel
Metal*



*Limestone
Tile*



*Cotton
Fabric*



Aged Cement

FF&E



*Cape Sofa
Established &
Sons*



*Barstool
Barstool
Blu Dot*

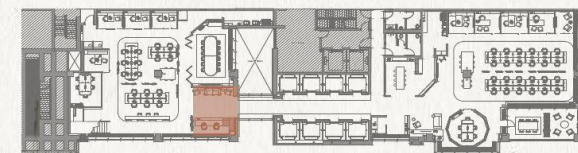


*Superline Pro
Flos*



RECEPTION

When exiting the elevator the **RECEPTION** is located on the East Side. By keeping the line of sight open, visitors are immediately immersed into the workspace, conveying a welcoming and transparent company. The use of artful reception furniture like the *Cape sofa* from *Established & Sons* exhibits the company's effort to foster **CREATIVE EXPRESSION**.





WORKSTATIONS



Materials



Steel Metal



White Oak Wood



Undyed Cotton Fabric



Cola Paint

FF&E



Bivi Table Steelcase



Think Chair Steelcase

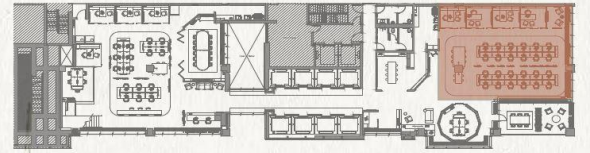


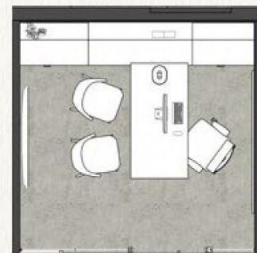
Marker Screen Steelcase



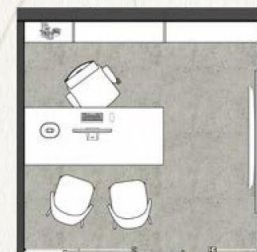
WORKSTATIONS

When exiting the elevator, dedicated **WORKSTATIONS** are located on the West Side. Capped at the end of both benching stations are flexible work tables that invite different forms of **COLLABORATION**. The lower table on the left is intended for reviewing large documents, while the bar height table on the right offers a different working posture and can accommodate small team meetings.

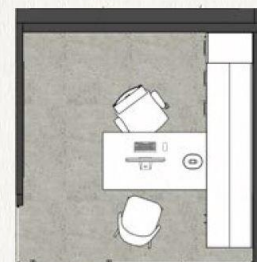




Option A



Option B



Option C

Materials



Vapor
Paint



White Oak
Wood



Rocket
Fabric



Etruscan Red
Paint

FF&E



V.I.A. Modular
Wall System
Steelcase



Tronco Chair
Mattiazzi

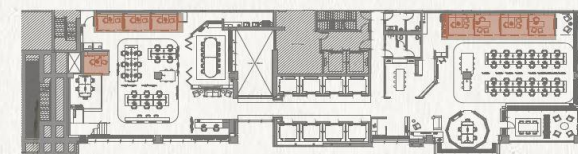


Smithfield
Suspension
Steelcase



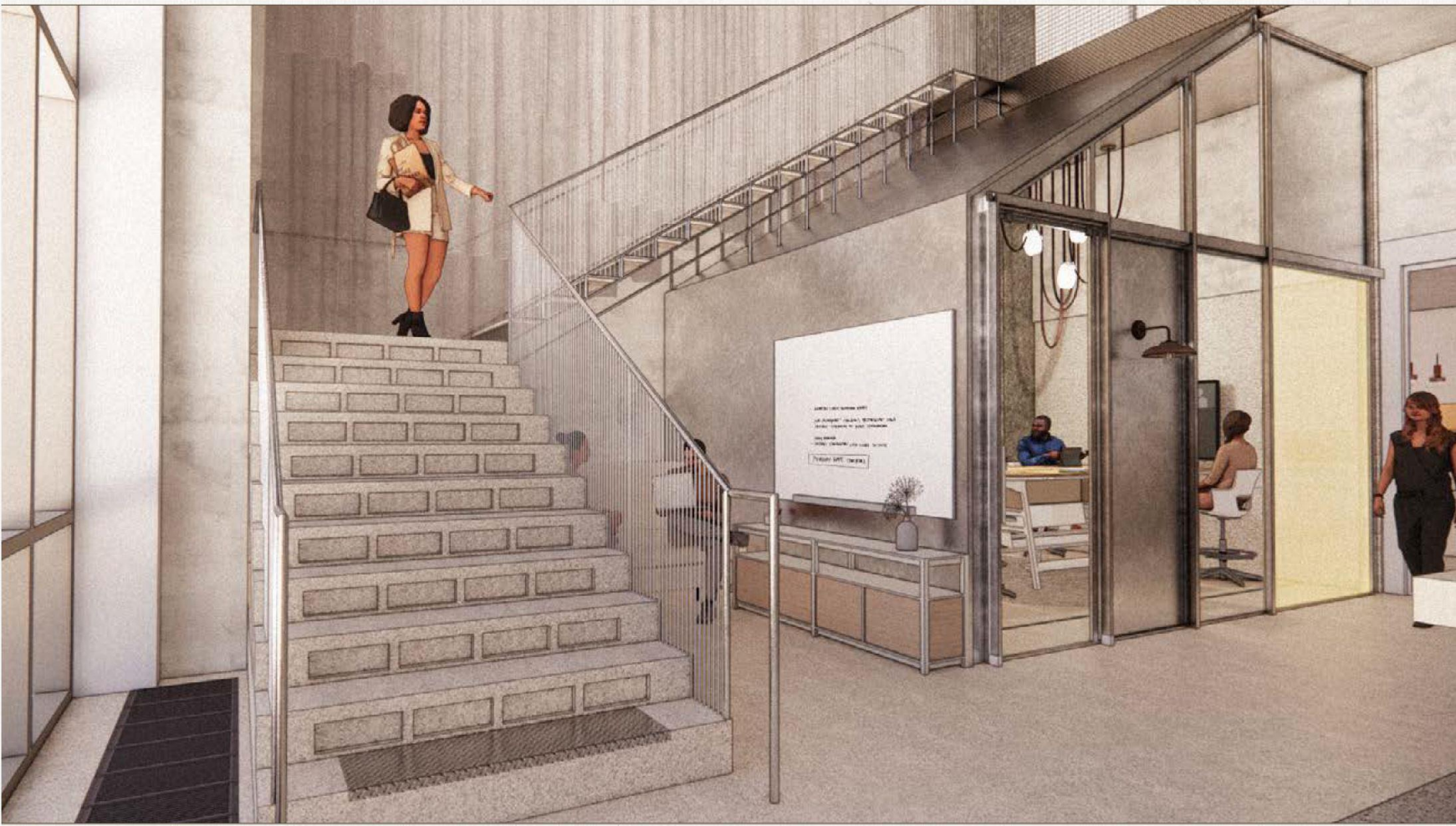
PRIVATE OFFICES

N E X T offers 3 different Private Office layouts to accommodate different preferences and work styles. **OPTION A** has the most **CLOSED STORAGE** for individuals who like to keep their things hidden away. **OPTION B** has mostly **OPEN SHELVING** for individuals who prefer to display their objects. **OPTION C** has an **ADJUSTABLE DESK** to accommodate those who prefer a standing option.



STAIRCASE

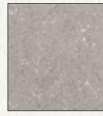




Materials



Steel
Metal



Stone Tile
Limestone



3Form
Glass



Undyed Cotton
Fabric

FF&E



Marker Board
Steelcase



Open Plan Long And
Low Bookcase
Blu Dot

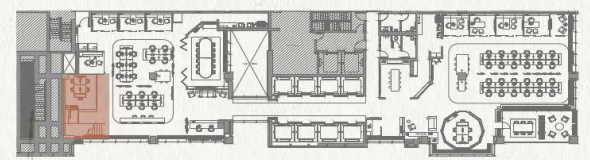


5 Star
Bar Stool
Steelcase



STAIRCASE

The main **STAIRCASE** that leads to the mezzanine climbs over an industrial-shed-inspired meeting room. Nestled between the meeting room and the staircase is a **HUDDLE ROOM** where employees can either meet with a coworker to **COLLABORATE** in a private and cozy setting or work independently in a more casual posture.





MEZZANINE



Materials



*Steel
Metal*



*White Oak
Wood*



*H&S
Fabric*



*Reclaimed Tile
Brick*

FF&E



*Thread
Steelcase*



*Cleon Sofa
Blu Dot*

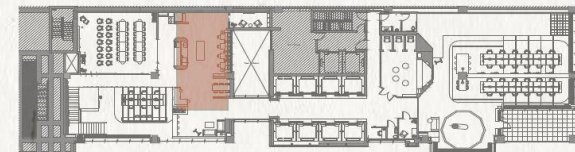


*Note Table
Blu Dot*



MEZZANINE

The **MEZZANINE** is zoned to welcome both **PRODUCTIVITY** and **SOCIABILITY**. The training room is located here and is equipped with large sliding doors that open up to create a more open plan which allows the space to be **FLEXIBLE** in usage. While training is in session doors are kept closed, but when open, the space becomes an extension of the cafe and can be used for company events.





NORTH SECTION
PERSPECTIVE



CAFE



Materials



Aged Zinc Metal



White Oak Wood



Reclaimed Tile Brick



Designtex Fabric

FF&E



Grid Table
Established & Sons



Cassette Sofa
Established & Sons

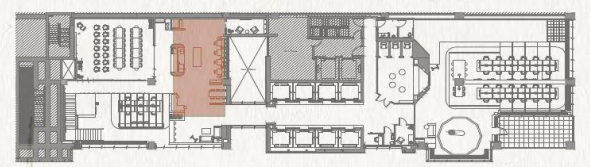


Radice Stool
Mattiazzi

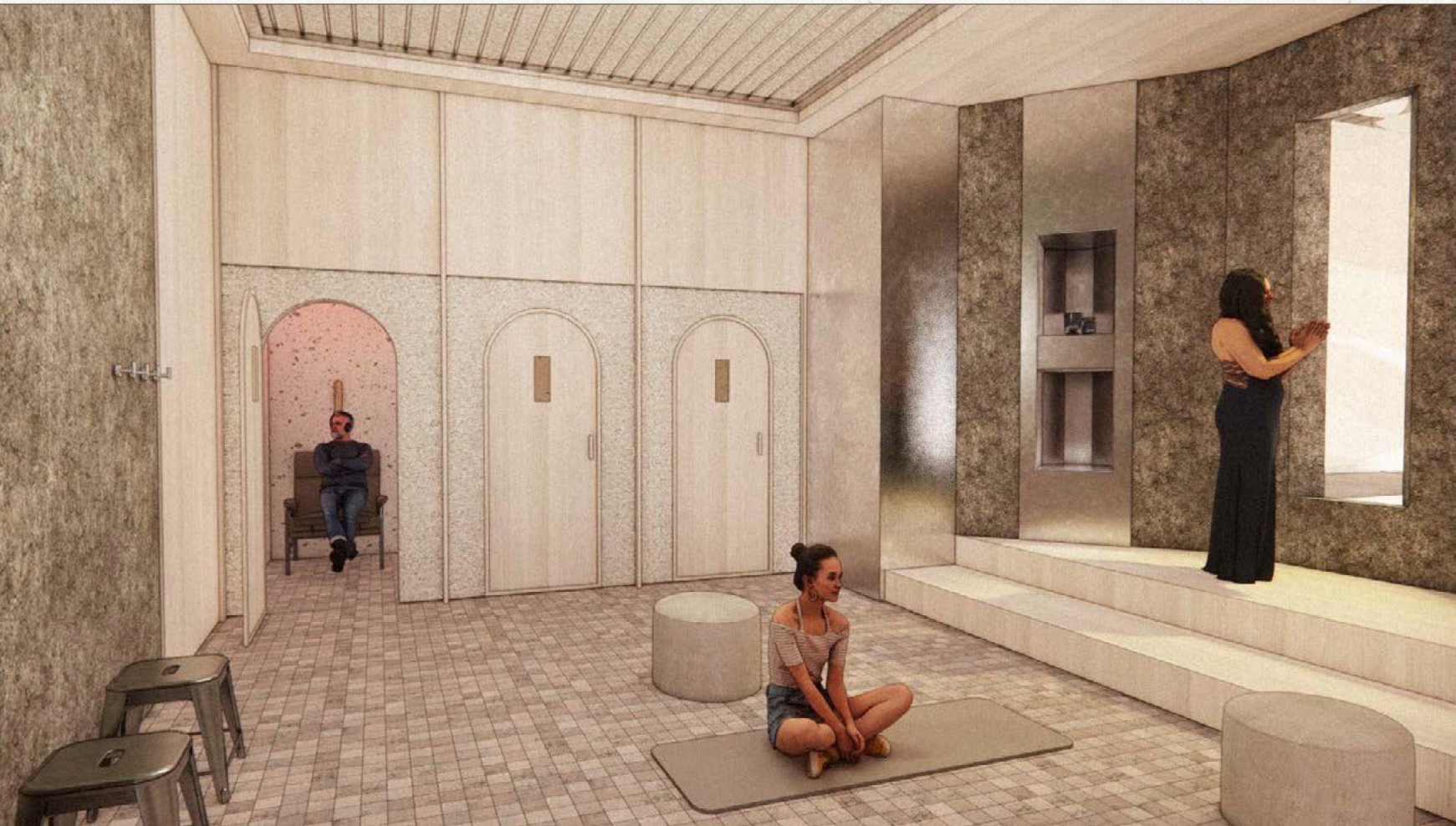


CAFE

The **CAFE** on the mezzanine offers a **VARIETY OF SEATING** and **POSTURES** to accommodate different group sizes and needs. The kitchen in the cafe is dual-sided with one side dedicated to food prep and the other dedicated to beverages. This not only prevents crowding in one area but the beverage side acts as a refreshment station for hosting in the training room. On the far end of the cafe is a large planter box with room to grow vegetables; a farm to table **WELLNESS** aspect of the cafe.







Materials



Steel
Metal



Recycled Wool
Insulation



Reclaimed Tile
Brick



Aged Cement

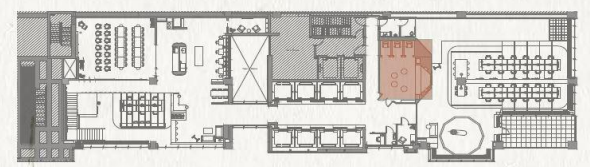
FF&E



Bumper Ottoman
Blu Dot

WELLNESS CHAPEL

The **WELLNESS CHAPEL** is located across the bridge on the mezzanine. This entire side is dedicated to **REFLECTION** and **INDEPENDENT WORK**. The Wellness Chapel offers its visitors a variety of ways to unwind and nourish the soul-body connection. There are mats for stretching or yoga, and ottomans to gather for a group prayer. There are also three private rooms equipped with lounge chairs, red light therapy and headphones for sound-bathing.



*"I dreamed that I had died
And gone to my reward
A job in heaven's textile plant
On a golden boulevard."*

- Thank You -

