



# NEXT

NEXT



## DALLAS RESEARCH & INSPIRATION

Similar to other growing metropolis's, Dallas TX, early era of growth consisted of designing transportation systems to connect people and goods.

Another key factor to Dallas's growth was its agricultural community. Within this community was the use of utilitarian equipment and agrarian structures that dotted the landscape. These structures tell stories and hold memories both in form and in the materials left behind. Wood and steel which was once whole and strong now lie quietly abandoned in this vast country landscape. These materials, having gone through an aging process elicit the memory of the community's past, its strength unveiling beauty in the depth of its natural patina.

Dallas embraces pedestrian driven connections that embody inclusivity and human connection via the joining of the arts, civic, and financial districts. Patterns of repetitious elements and materials echo those found in the agrarian roots of the countryside. These materials and forms are intertwined within the city, an urban metropolis which in its hustle and bustle honors its past at every opportunity.



**HCB**

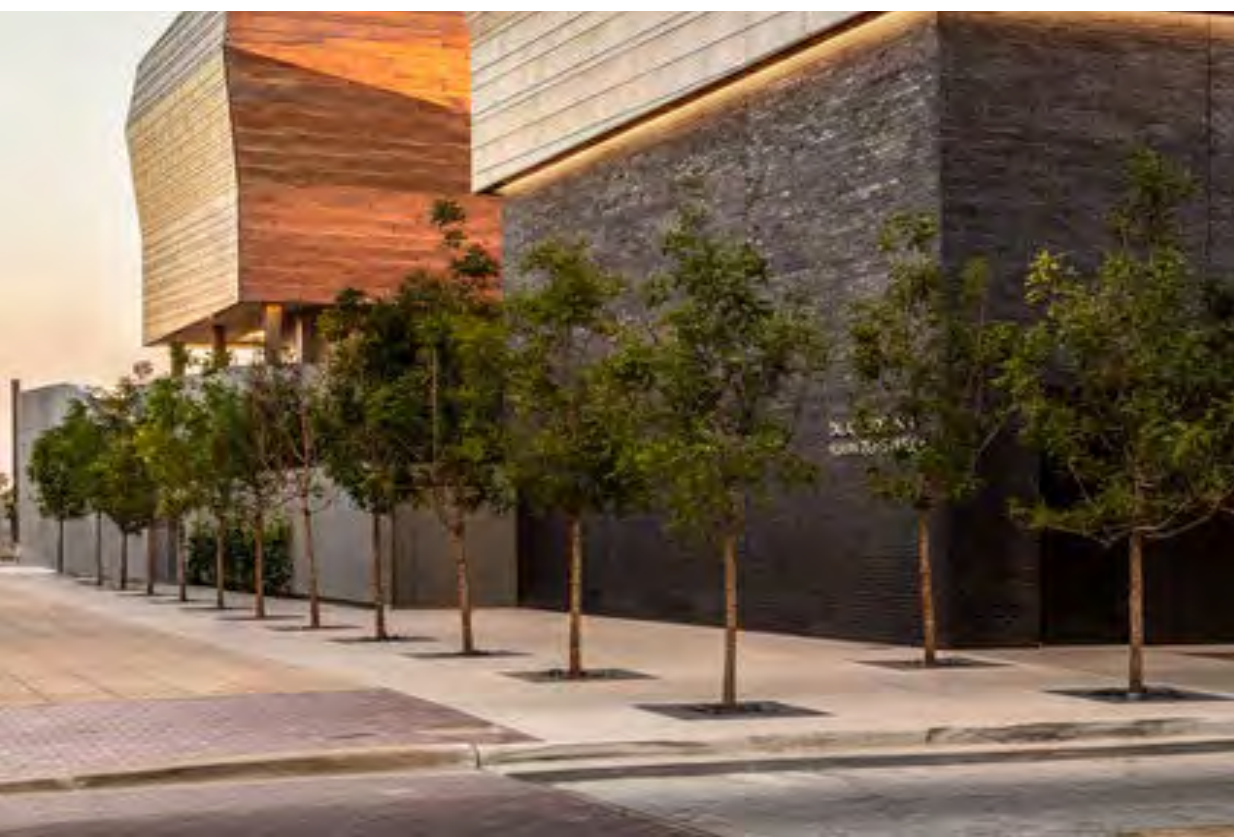
HENRY C BECK COMPANY

GENERAL CONTRACTORS  
328 Simmons Plaza  
Dallas, TX 75207

Job: REUNION  
Location: D  
Owner: WOOD  
Architects &  
Date: 7/24/7  
Looking: Con



NE | XT



## CLIENT INFO & CONCEPT STATEMENT

NEXT, is an Architecture and Interior Design firm that specializes in designing corporate workspaces, healthcare, and education. NEXT's Dallas location is designed to represent their evolution by honoring the rustic era of Dallas in a progressive manner. Seeing the potential in simple structural elements and through the use of repetition, NEXT's new office reflects their progressive ideology in their designs for the future, and pays an homage to Dallas' agrarian aesthetic.

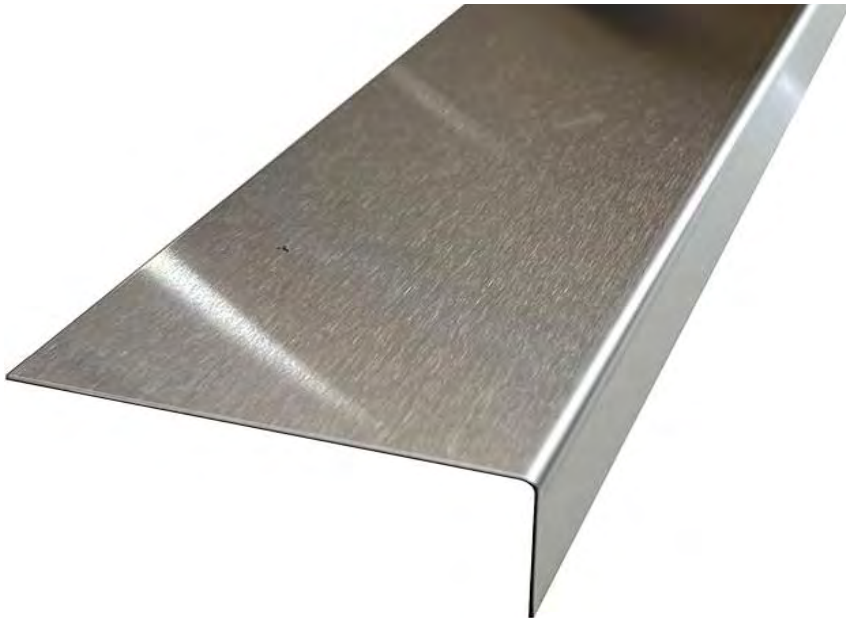
NEXT Dallas' design intent is to allow younger generations of designers and architects to preserve history while designing spaces for future generations. Architecturally, agrarian grid structural elements and materials are developed to bring back the rustic and charming aesthetic, while achieving a contemporary style as they are paired with modern materials. The transition of textures, colors and materials within the natural patina process represent the evolution from blue hues to burnt orange hues as a way of representing Dallas' continued evolution.

# CONCEPTUAL DEVELOPMENT

## ORTHOGONAL



Individuality is represented through a single piece of steel and represents the “ME” factor.



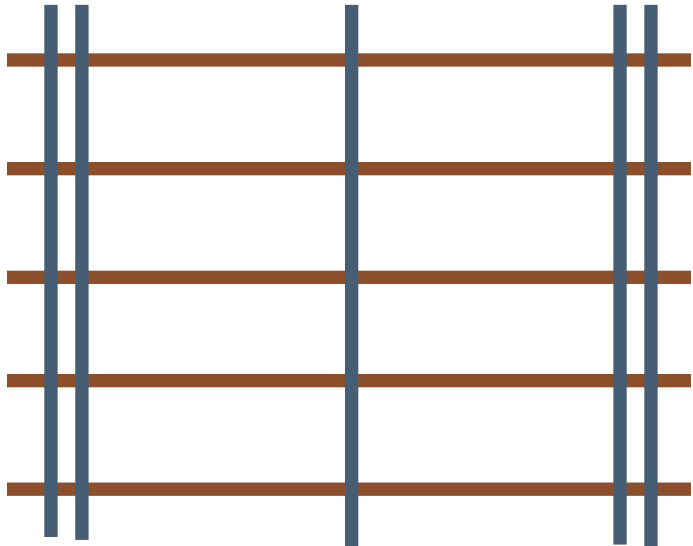
## REPETITION



The repetition found within structural elements, represents the “WE” factor. This is shown as a cluster of who are unique in their own way.



## GRID



The grid structure represents not only the architecture, but NEXT as a whole as it connects. the ME + WE.



# PATINA METHODOLOGY

## RAW STEEL

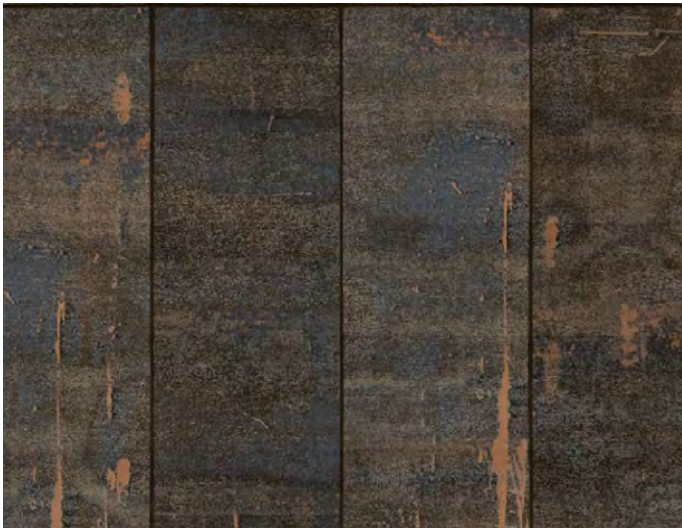


Within NEXT Dallas' location, the early stage of raw steel is represented through the textiles of the office furniture on the first Level.



Blue represents confidence & stability.

## AGING STEEL



The next aging stage of the steel begins to release brown hues into the space, which is represented through the different selections of wood within the entire office.



Brown represents warmth & wisdom.

## AGED STEEL



During the final stages of oxidation, steel patinas, releasing beautiful shades of burnt orange. This stage is represented throughout the second level of the office.

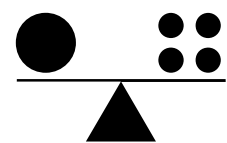


Orange represents ambition & creativity.

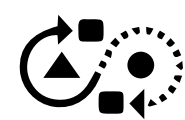
# DESIGN PRINCIPLES



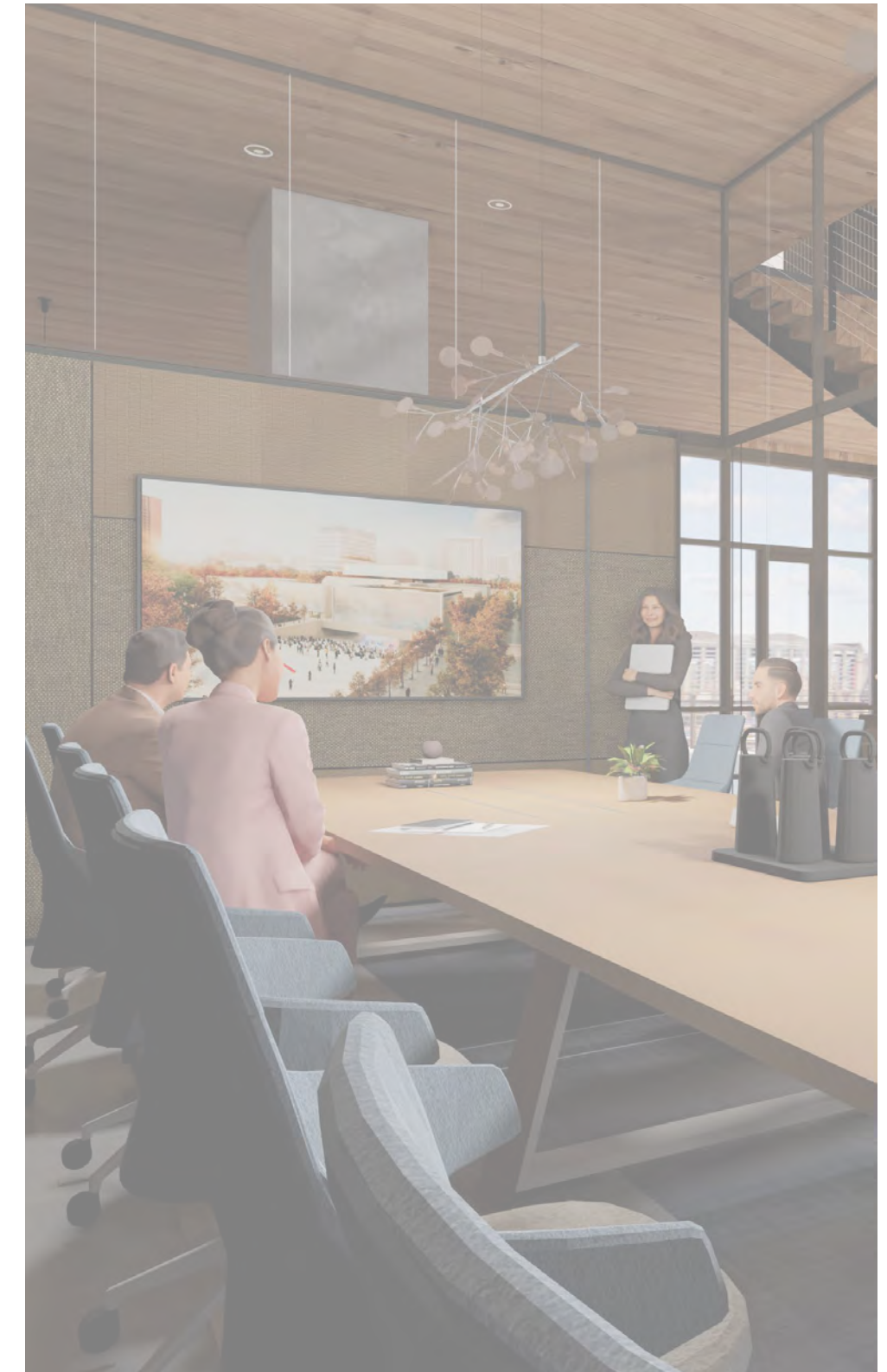
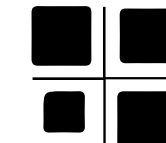
ME + WE



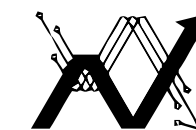
FIXED TO FLUID



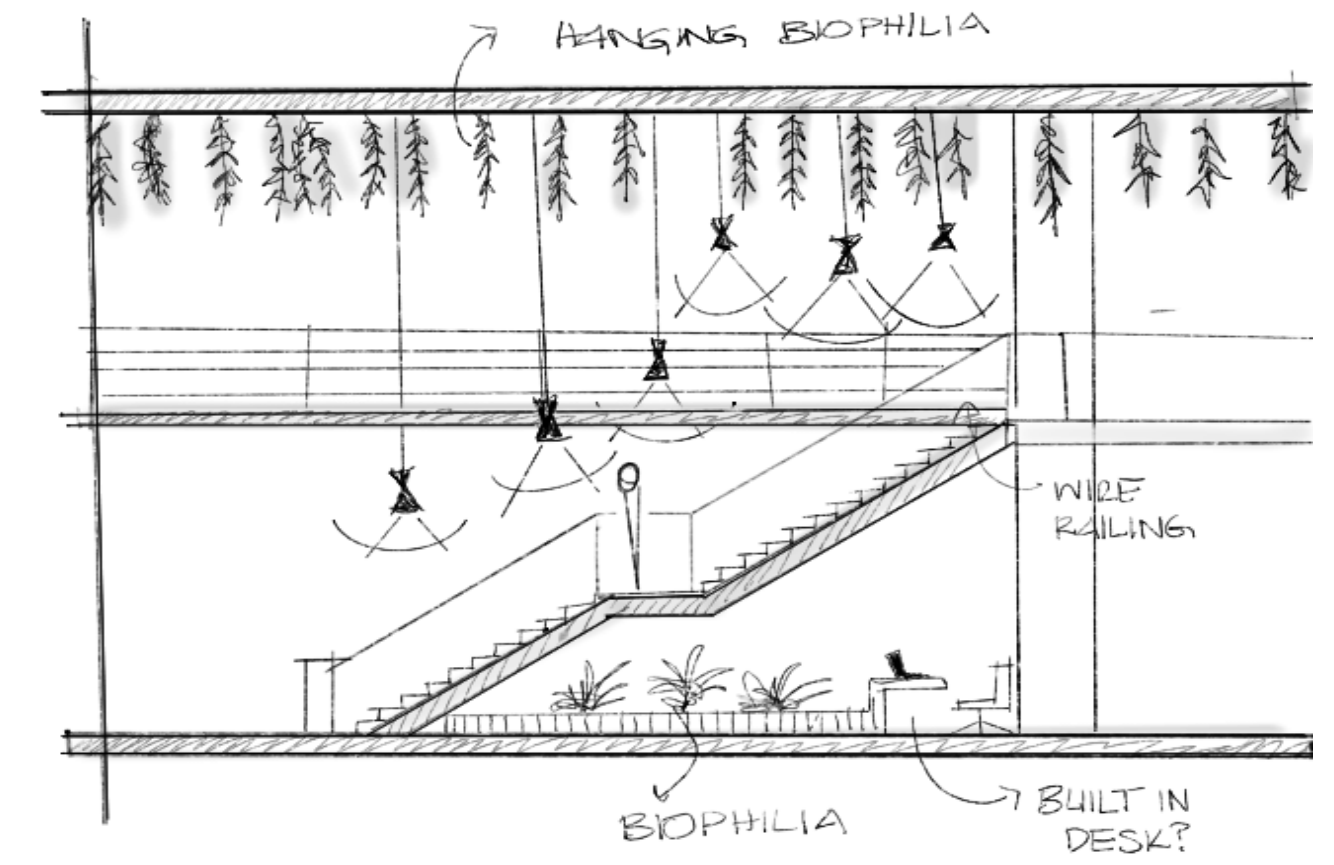
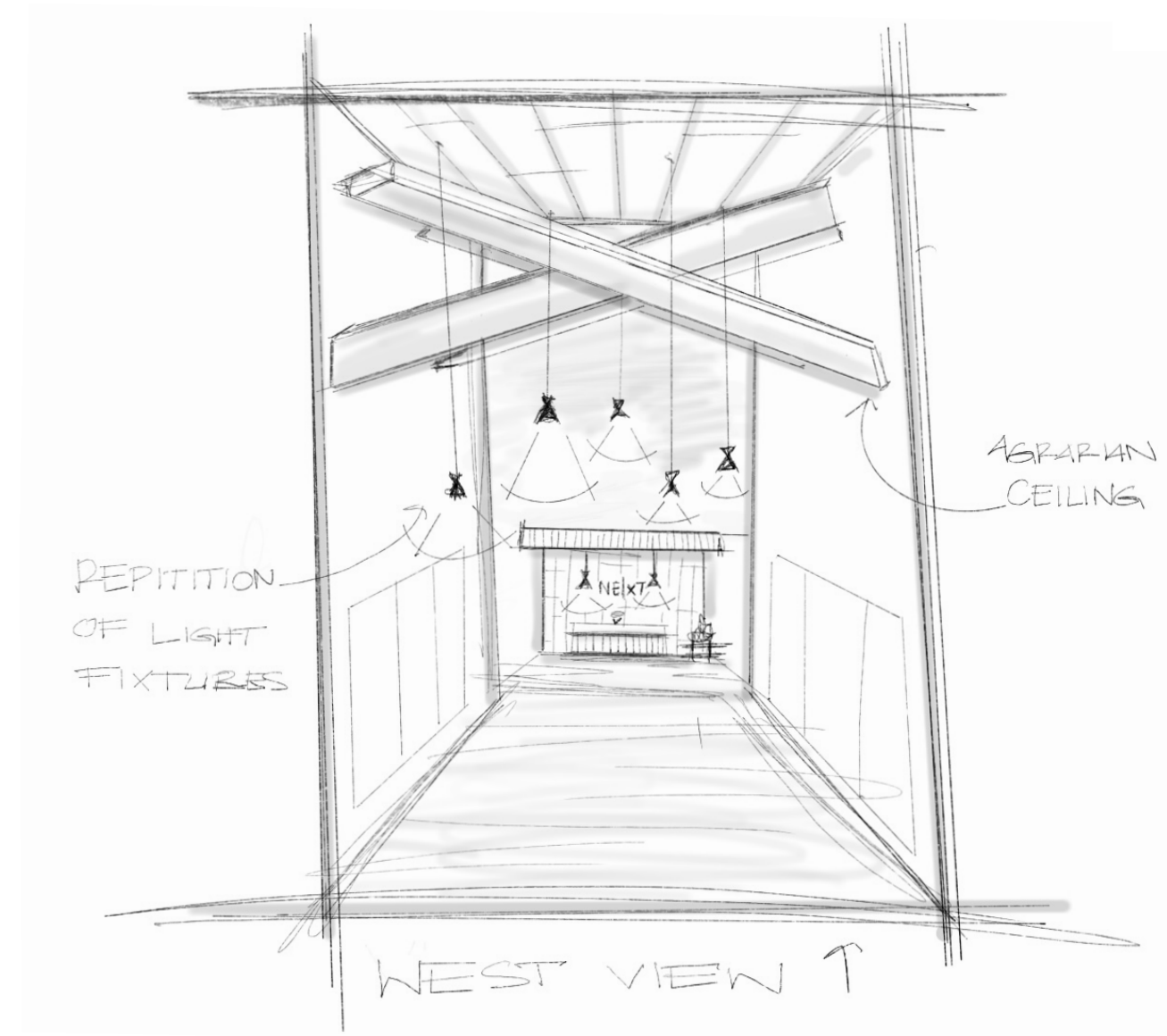
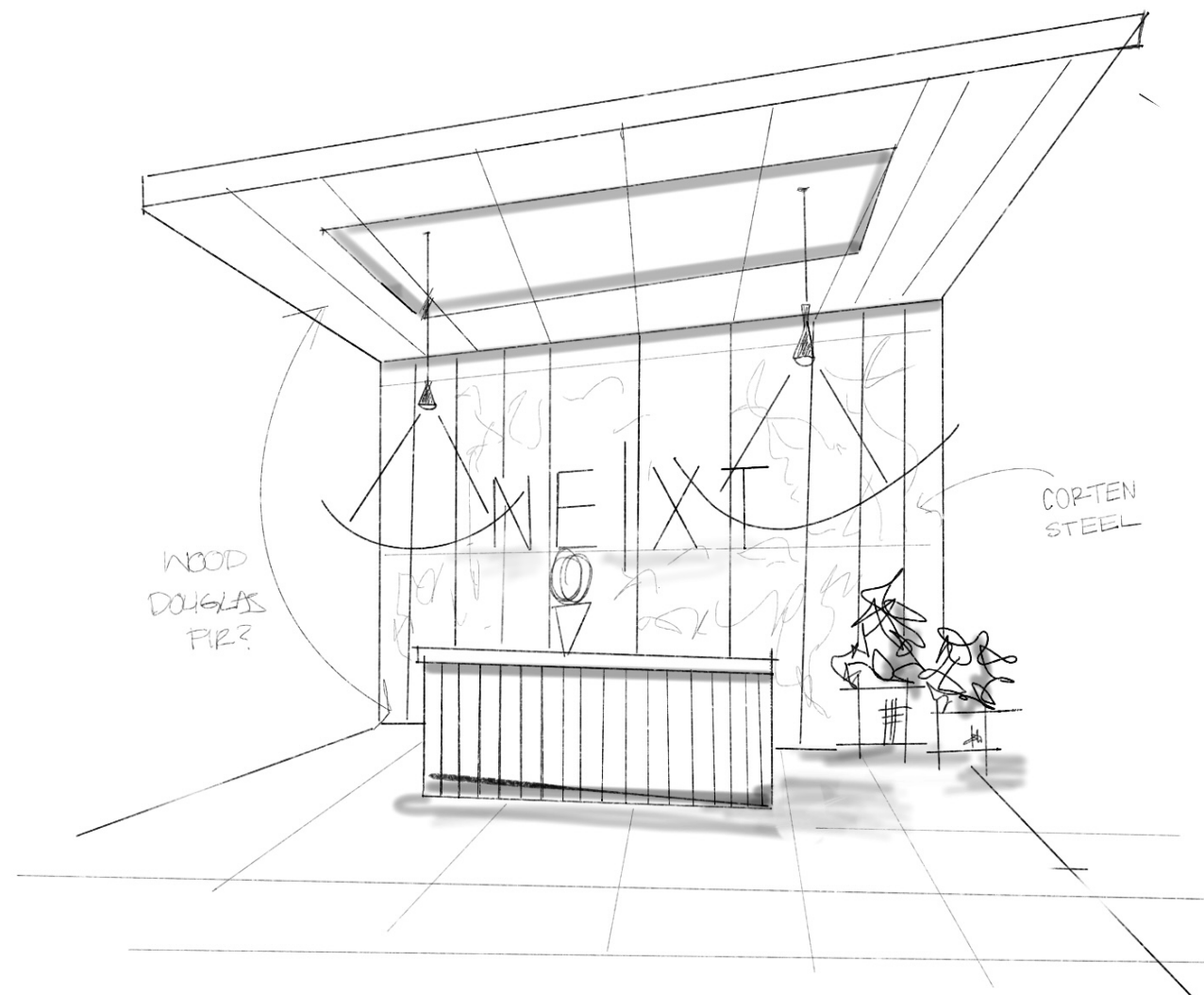
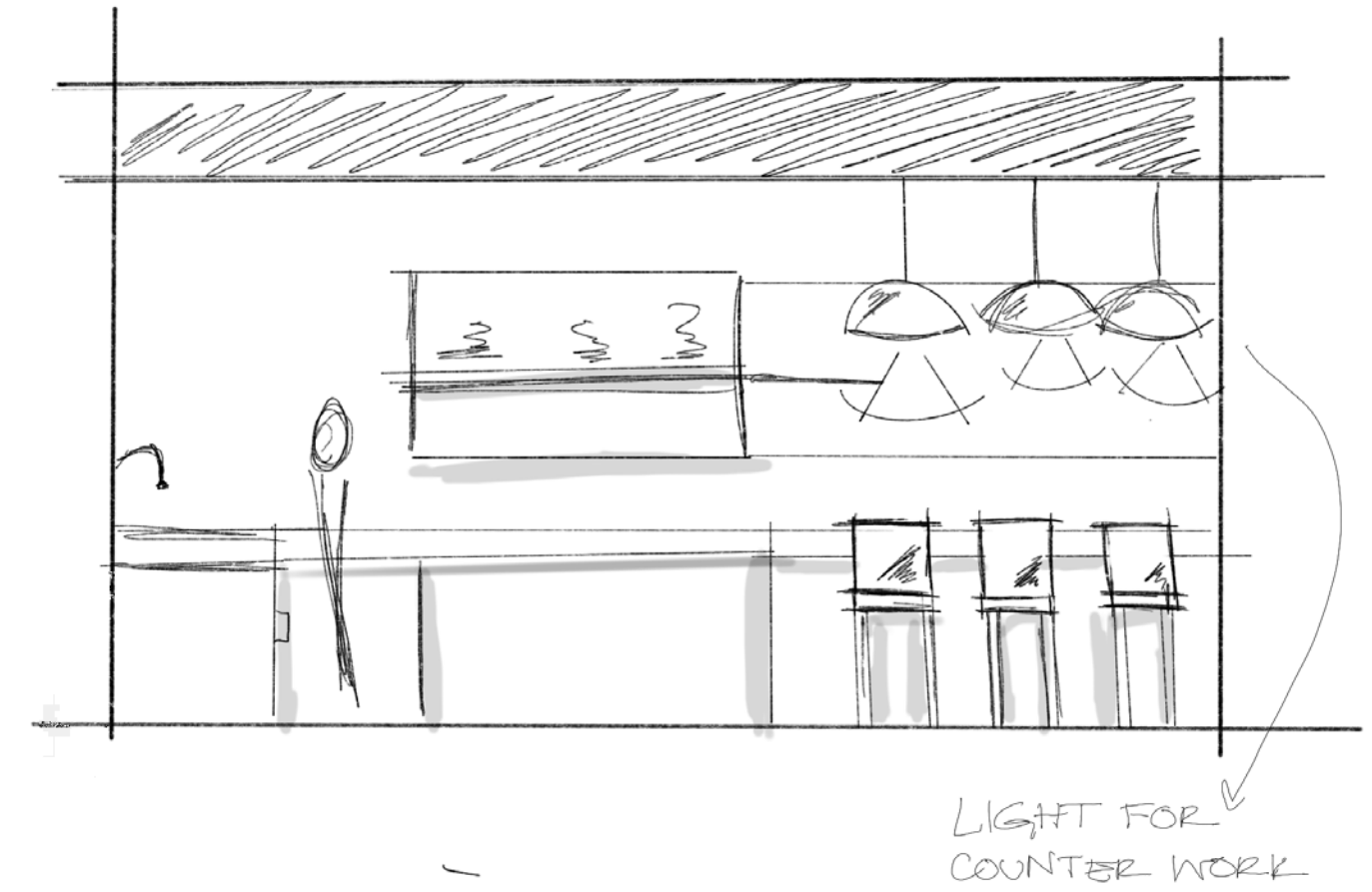
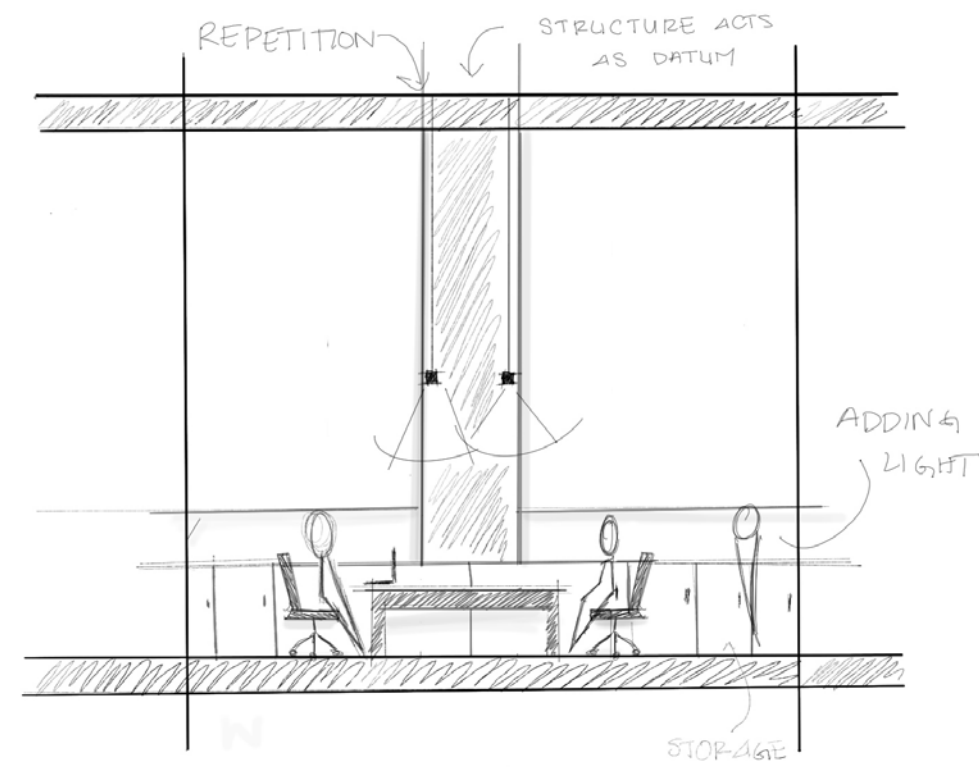
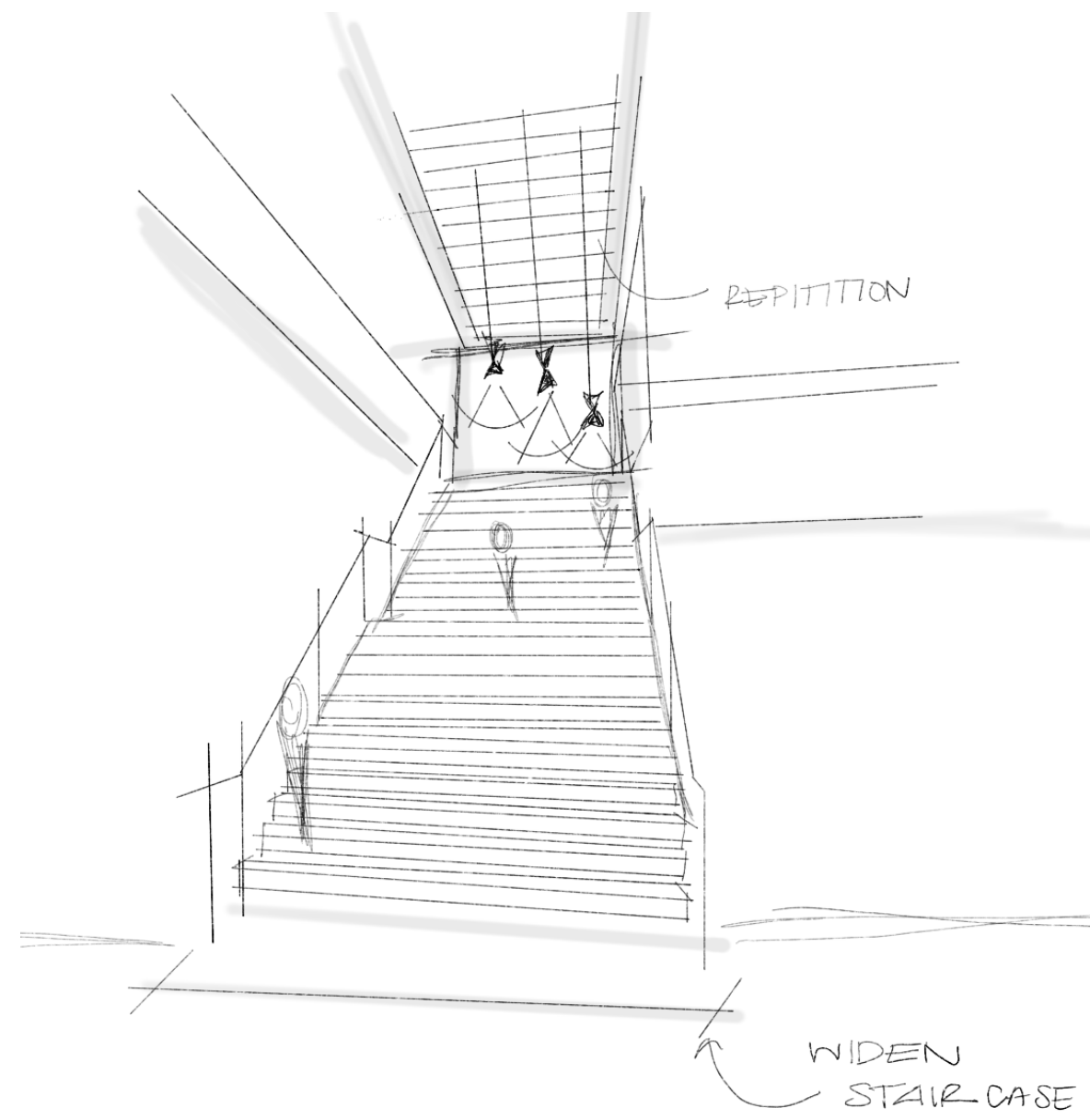
OPEN & ENCLOSED



BRAIDING DIGITAL & PHYSICAL

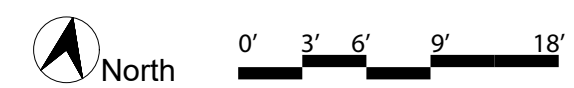


# CONCEPT DEVELOPMENT SKETCHES & IDEATION

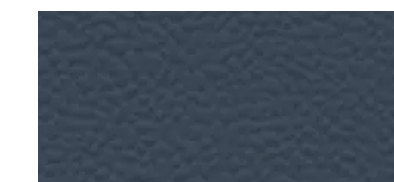




# FLOOR PLAN



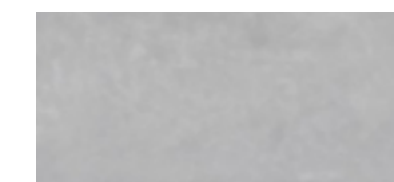
- |   |                        |    |                          |    |                   |
|---|------------------------|----|--------------------------|----|-------------------|
| 1 | Reception              | 9  | Huddle Room              | 17 | Managing Director |
| 2 | Work Stations          | 10 | Meeting Room             | 18 | Terrace           |
| 3 | Studio Director- Corp. | 11 | Phone Room               | 19 | Lift              |
| 4 | Studio Director- Edu.  | 12 | Mother's Room            |    |                   |
| 5 | Studio Director- H.C   | 13 | Wellness Room            |    |                   |
| 6 | Design Director-H.C    | 14 | Client Presentation Room |    |                   |
| 7 | Design Director-Edu.   | 15 | Resource Center          |    |                   |
| 8 | Design Director-Corp.  | 16 | Sustainability Manager   |    |                   |



Rubber Tiles

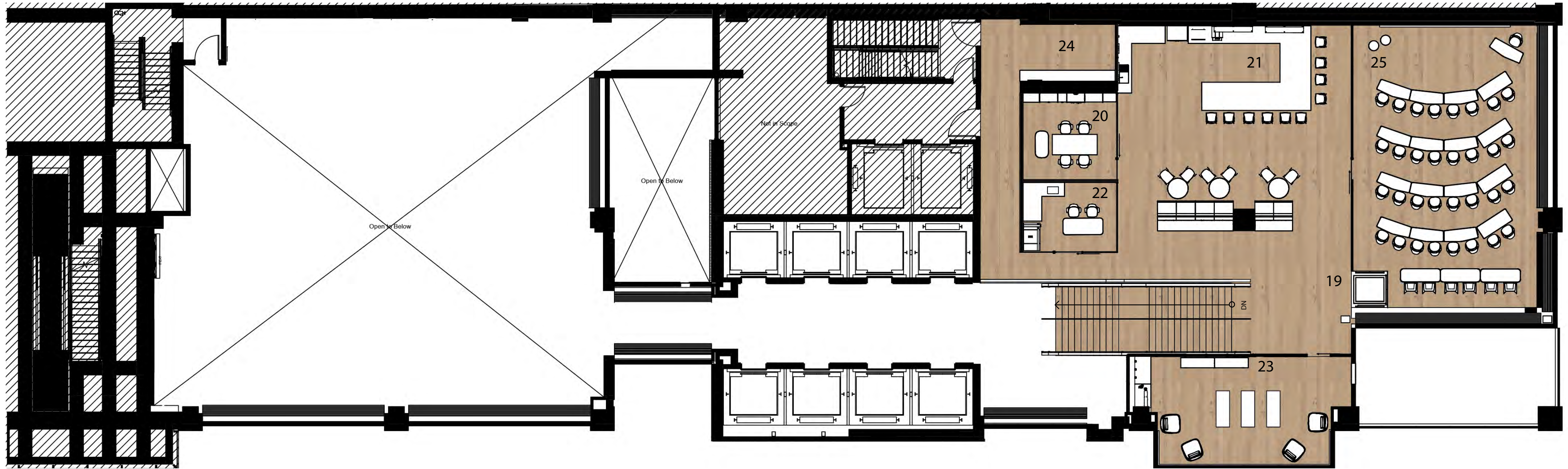


Oak Flooring

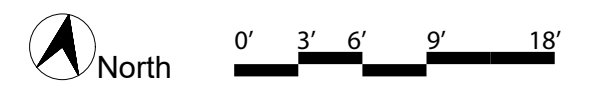


Polished Concrete

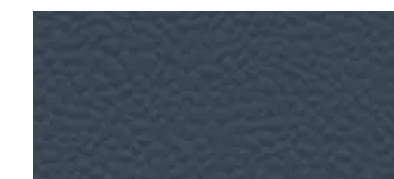




# MEZZANINE



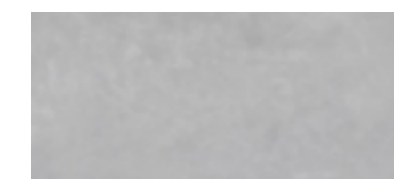
- 19 Lift
- 20 Design Library
- 21 Work Cafe
- 22 Innovation Lab & Model Shop
- 23 Wildcard - Stretch and Serenity Room
- 24 Storage
- 25 Training Classroom



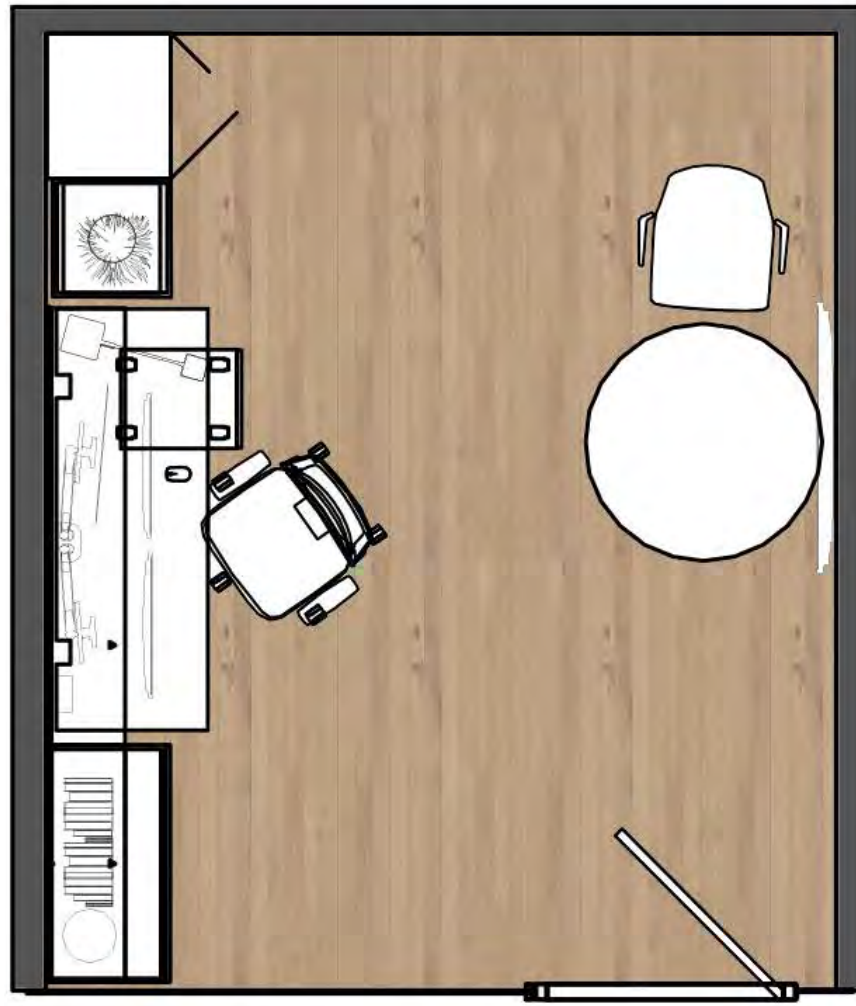
Rubber Tiles



Oak Flooring



Polished Concrete



A - OPTION ONE

This layout option provides a private space for work as it is shielded, while still including an extra work area.



B - OPTION TWO

This layout option provides a great balance of an open and enclosed working environment as partial everwalls allow a glimpse of the outside office environment.

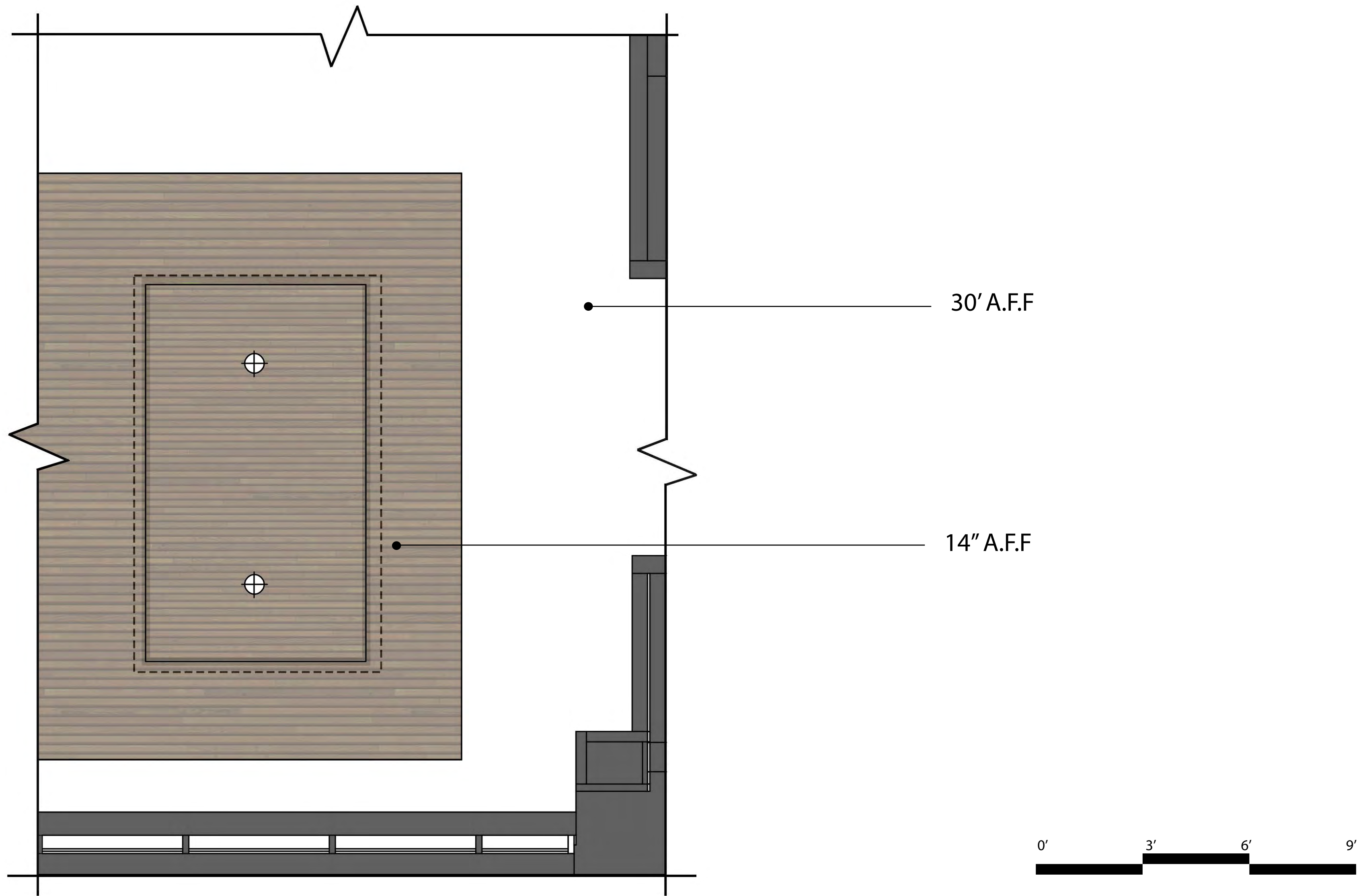


C - OPTION THREE

This layout option provides a great balance of open and enclosed collaboration work area in a smaller capacity.


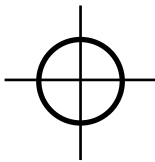
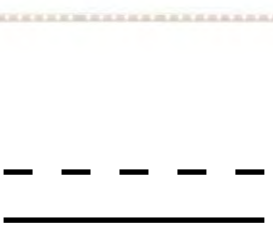

## PRIVATE OFFICE LAYOUTS

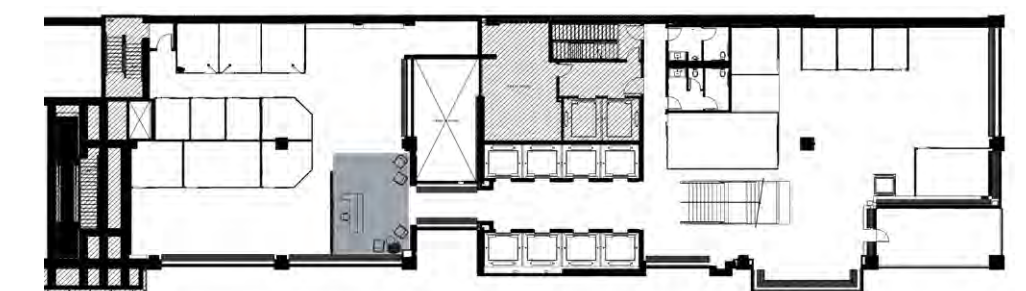


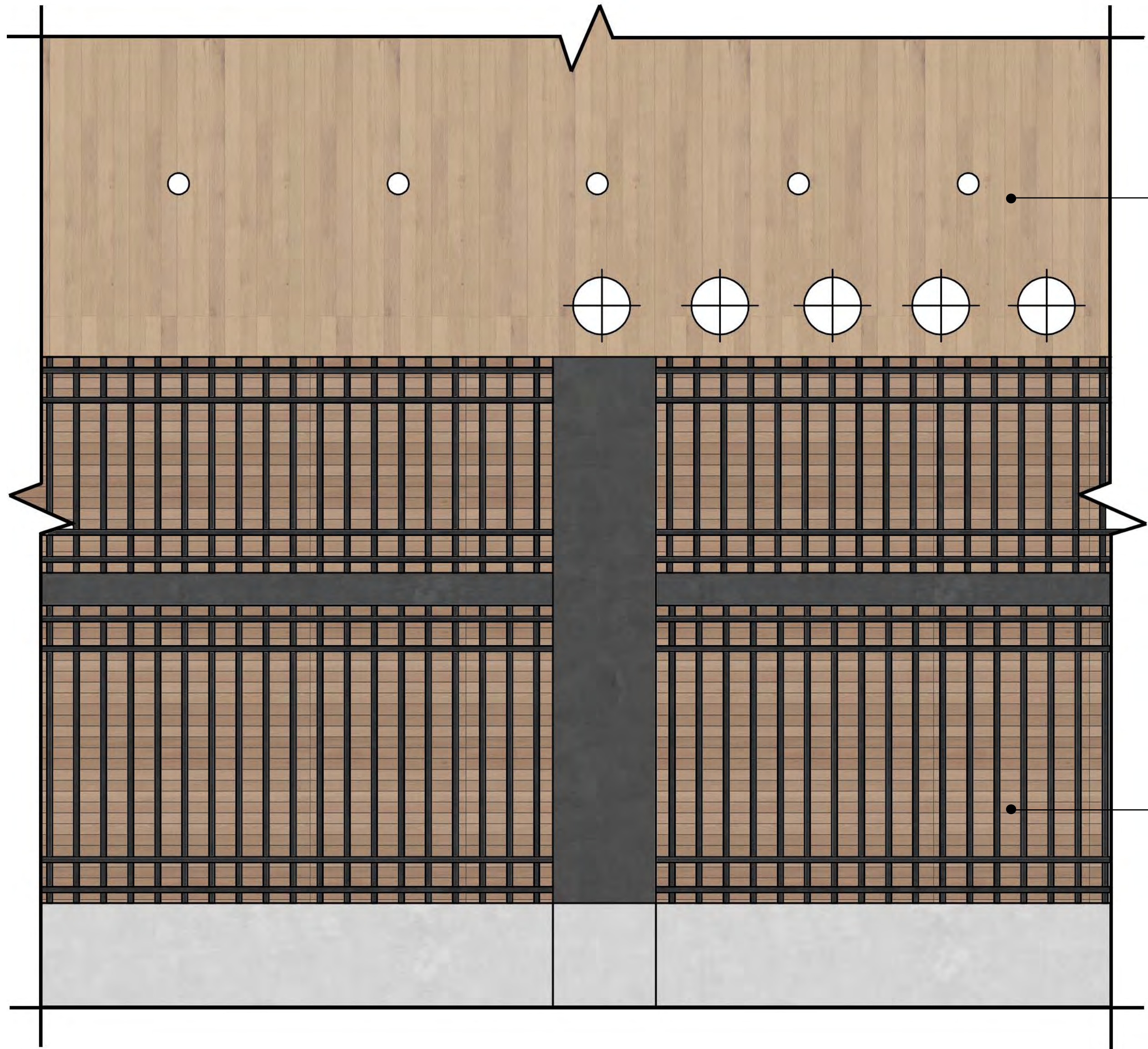


RECEPTION AREA REFLECTED CEILING PLAN (Enlarged)

## LEGEND

- 
String Light by Flos
- 
Cove Lighting
- 
Cove Lighting
- 
Stained Douglas Fir





14' A.F.F

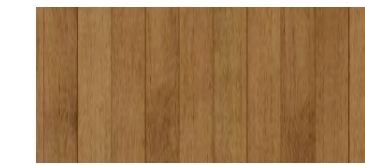
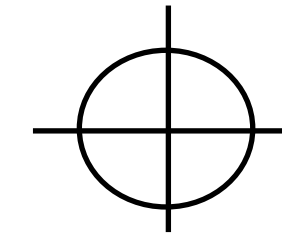
15'-6" A.F.F



# LEGEND



Beat Pendant  
by Tom Dixon



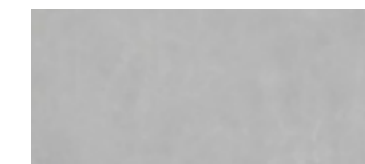
Oak Wood Vinyl



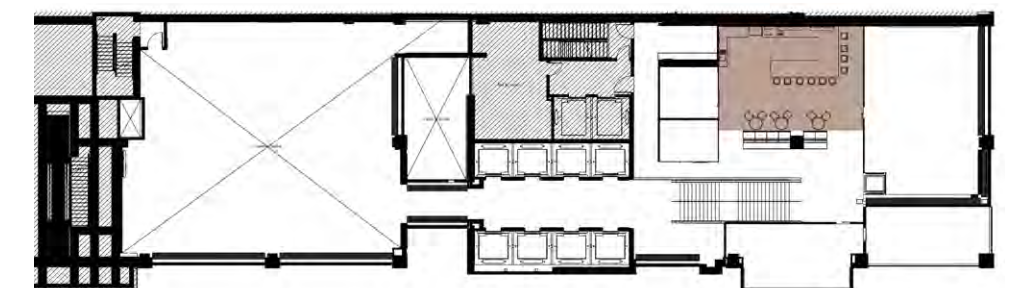
Western Red Cedar



Black Steel

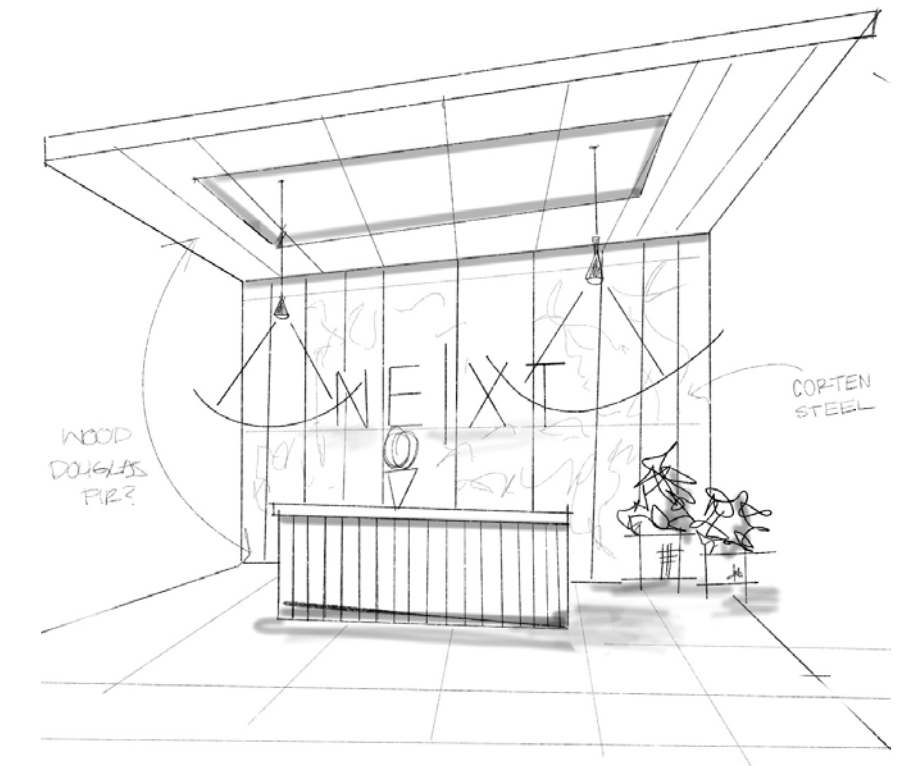


Polished Concrete

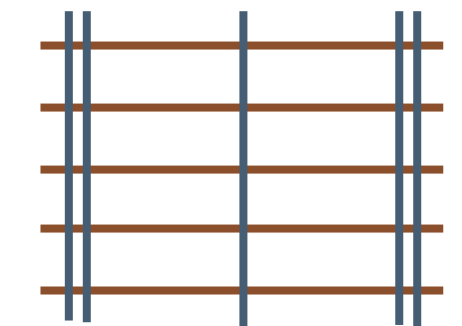


CAFE REFLECTED CEILING PLAN (Enlarged)

# VIEW FROM ELEVATOR LOBBY TO RECEPTION DESK



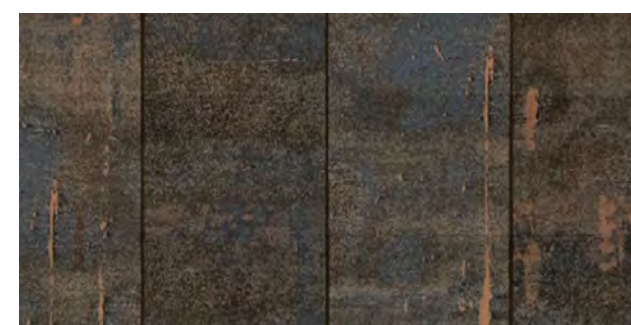
The Corten Steel that is used in the reception area foreshadows the hues of the **blue** & **orange** hues that will be used within the levels.



Zio Lounge - Moooi



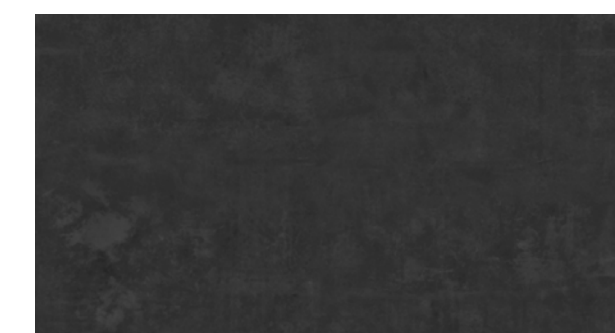
String Light - Flos



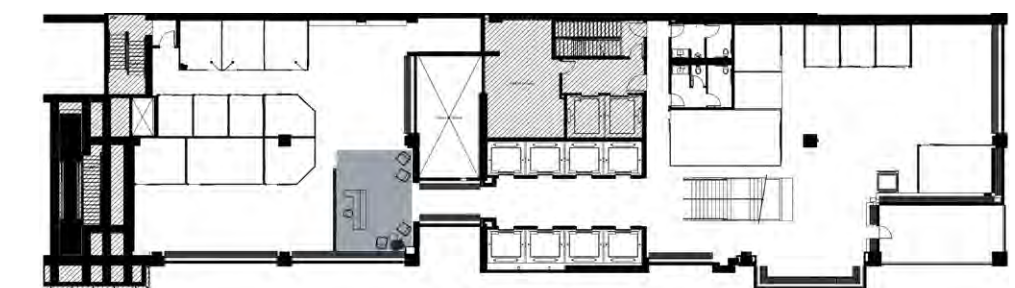
Aged Corten Steel



Stained Douglas Fir

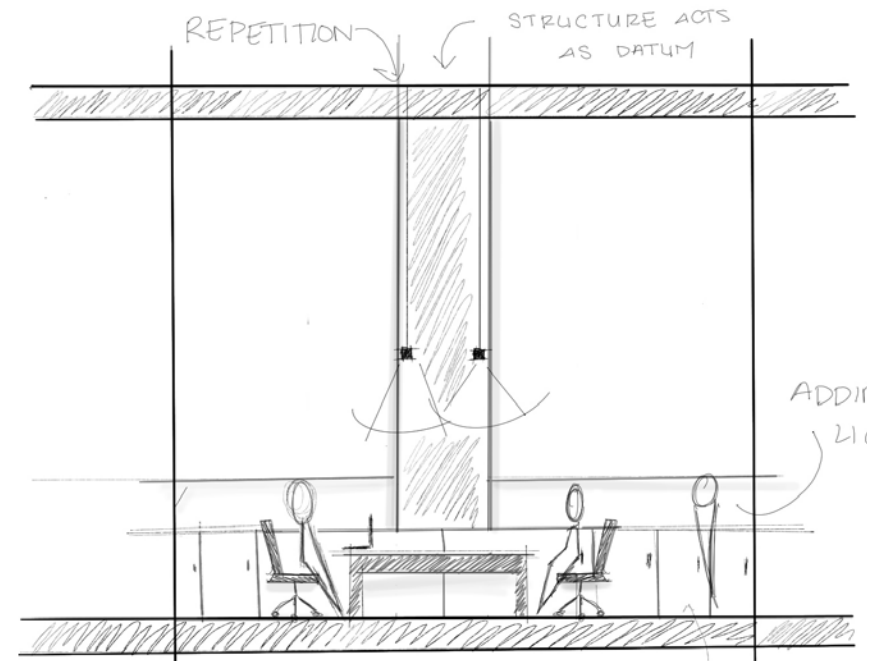


Polished Concrete





# VIEW OF WORKSTATIONS



These work stations allow easy access to work alongside colleagues and are adjacent to the private offices.



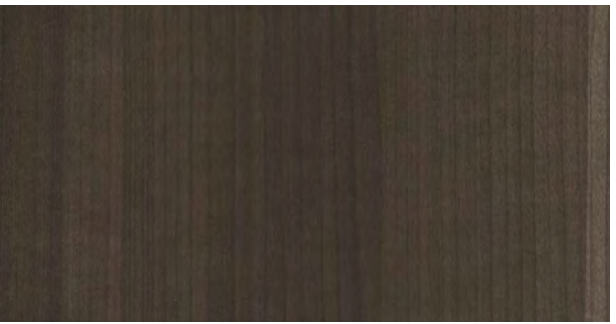
Amia Chair



WorkValet Storage



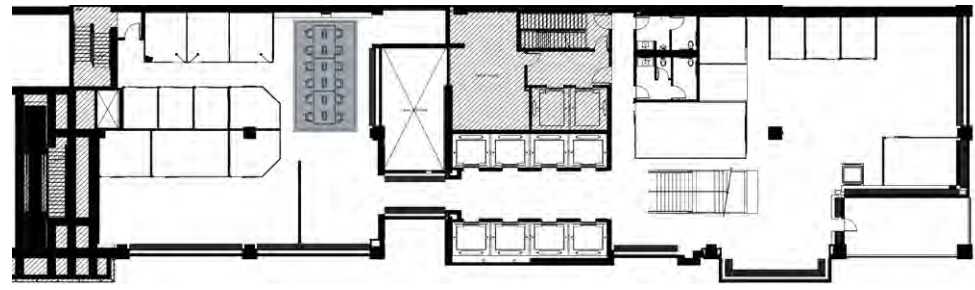
Linear Drop Light



Black Wood Vinyl



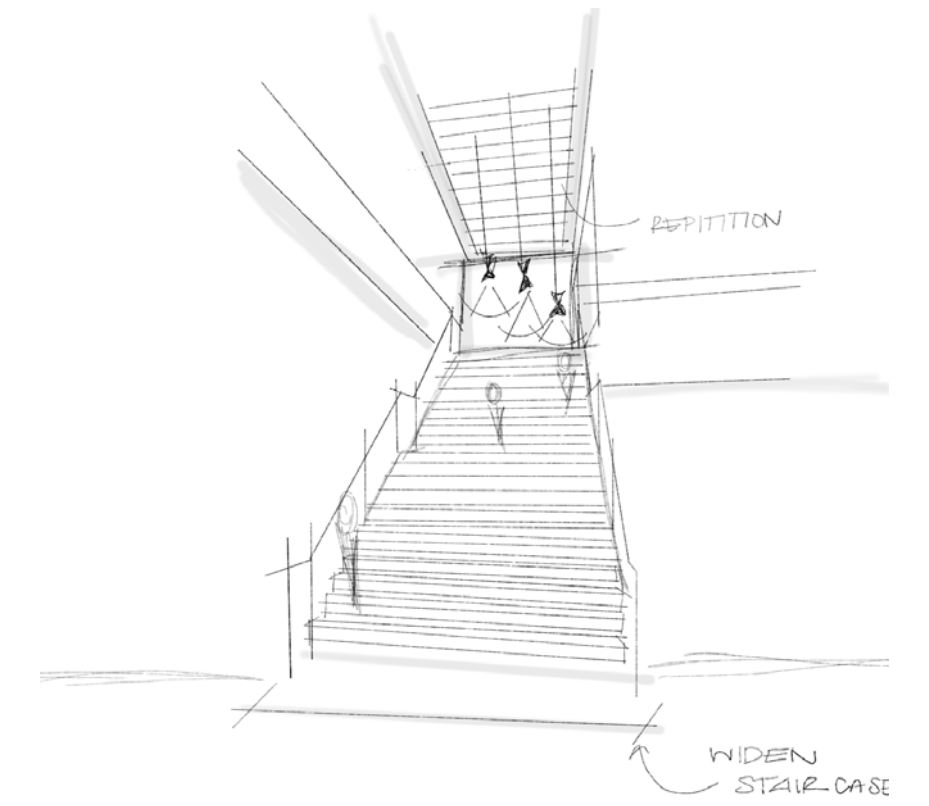
Brown Corrugated Aluminum



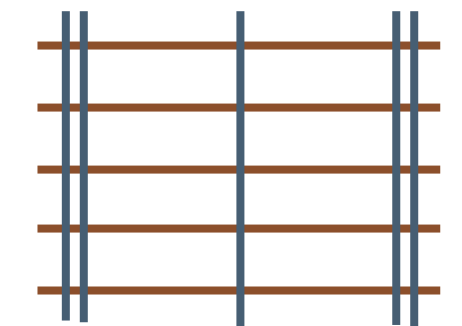




# VIEW TOWARDS MONUMENTAL STAIRCASE



The repetition within the stairs is also mirrored through the steel on the ceiling as well as the light fixtures that are descending over it.



Massaud Seating - Coaleese



Heracleum - Mooi



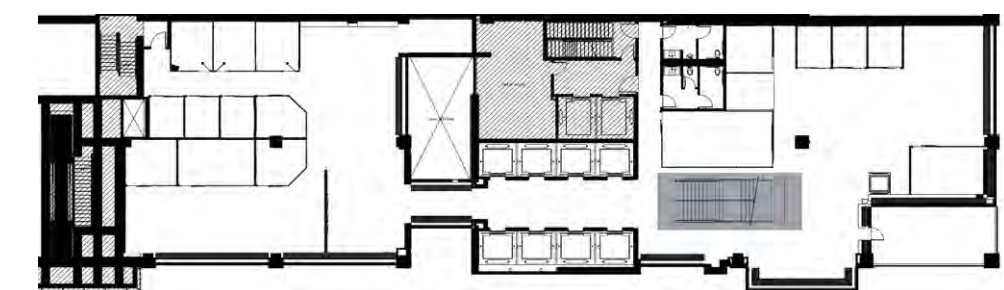
String Light - Flos



Fronda Chair- Mattiazzi



Trestle Table - Viccarbe





# VIEW FROM CLIENT PRESENTATION ROOM



Glass everwalls are a great design solution to allow natural light into the presentation room.

The extended glass also gives the occupants the opportunity to appreciate the monumental staircase.



Massaud Seating - Coaleese



Heraclum - Mooi



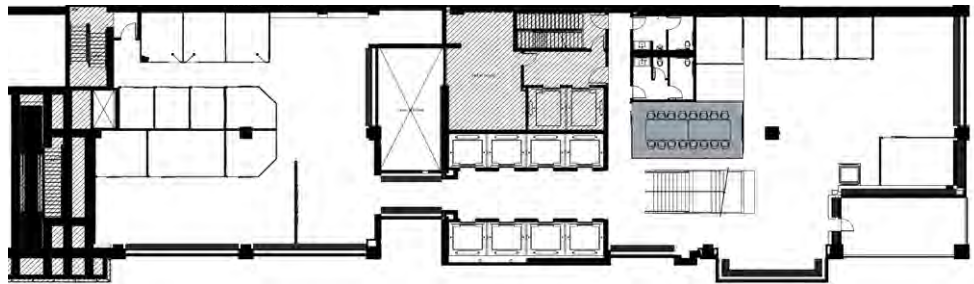
Flex Mobile Power



Coffee - Velocity

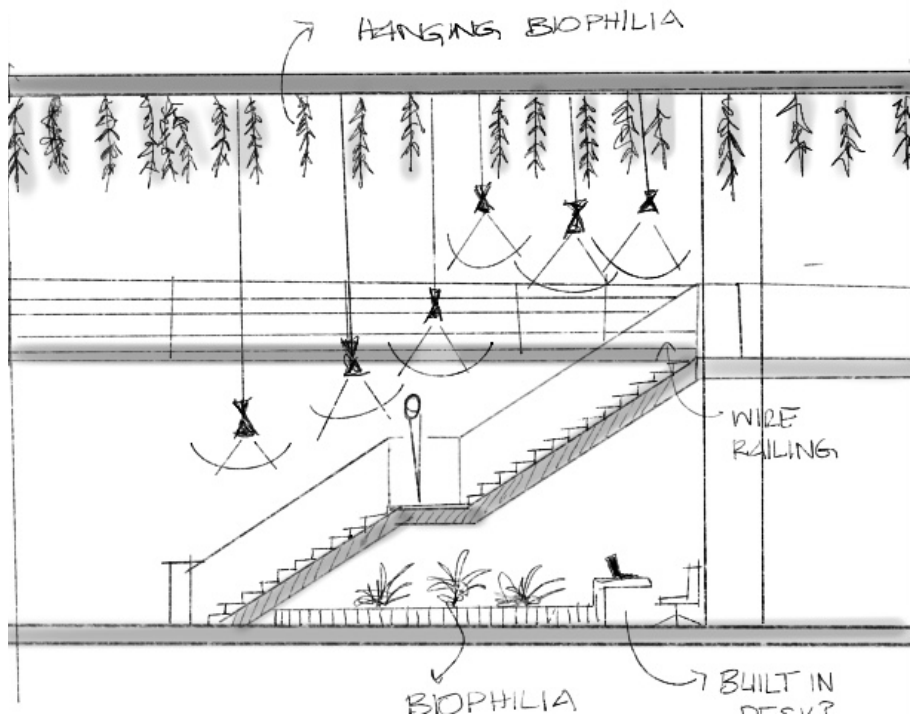


Cesta - Woven

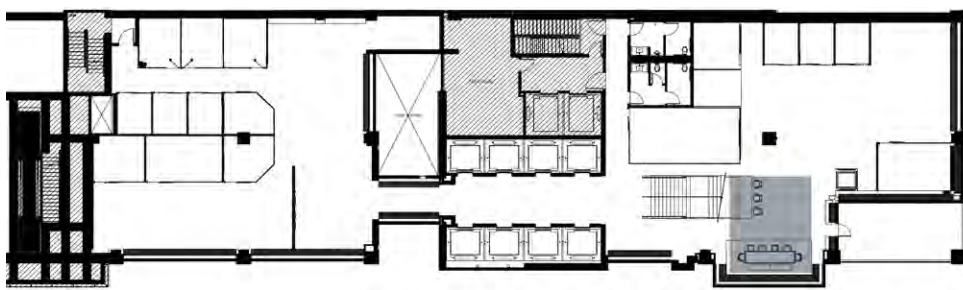




# VIEW OF BUILT-IN DESKS



Built-in workspaces solve issues of clearances under the staircase. Glass both completes the barrier protecting the overhang hazard as well as covers the open risers. Biophilia is incorporated to bring the outdoors into the space.



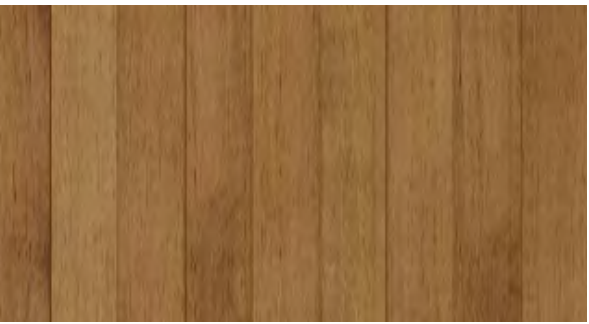
Uncino Chair - Mattiazzi



Fronda Chair - Mattiazzi



Stained Douglas Fir



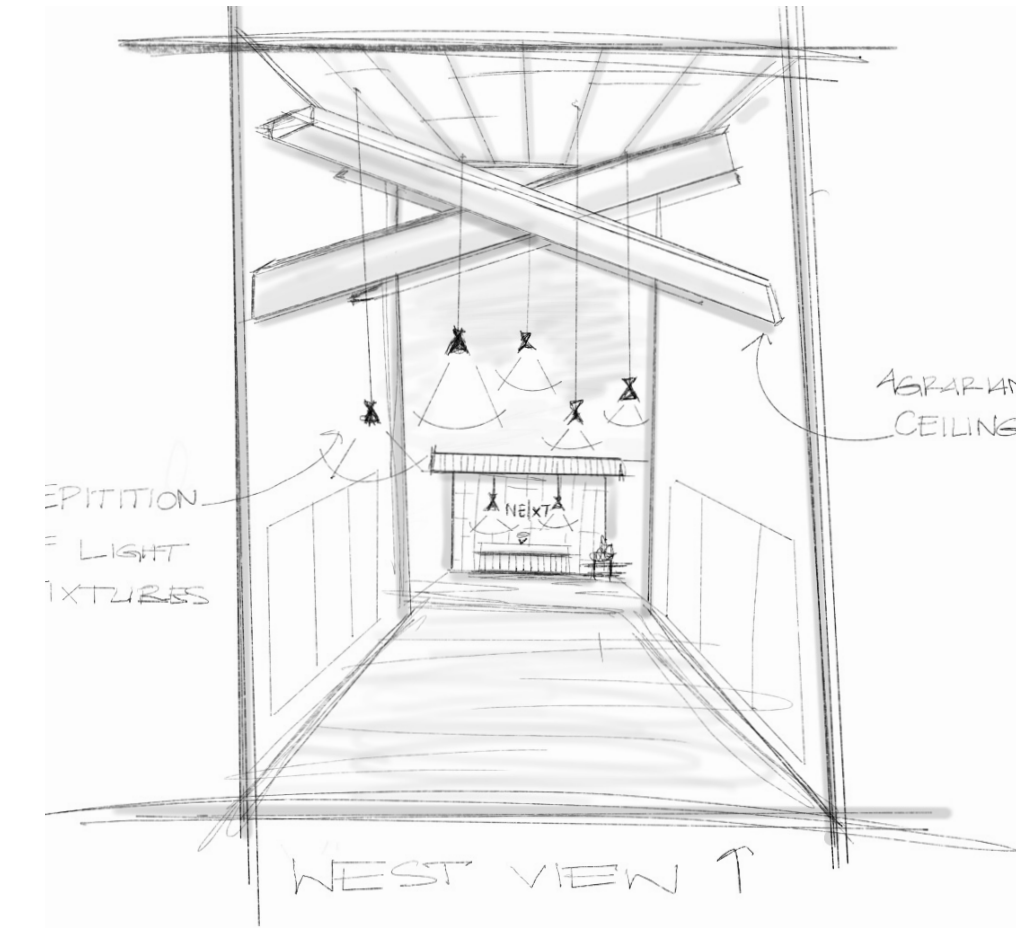
Oak Wood Vinyl



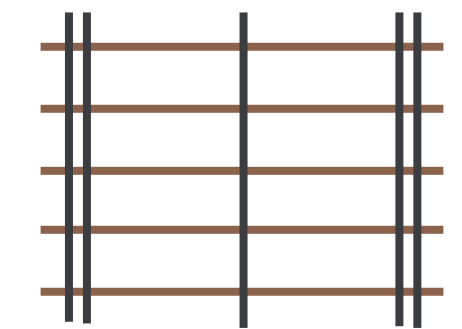
Polished Concrete



# VIEW FROM MEZZANINE



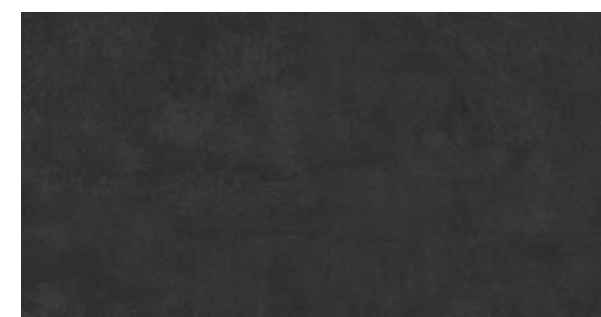
The interconnected steel structure on top of the elevator lobby connects both levels of the space.



String Light - Flos



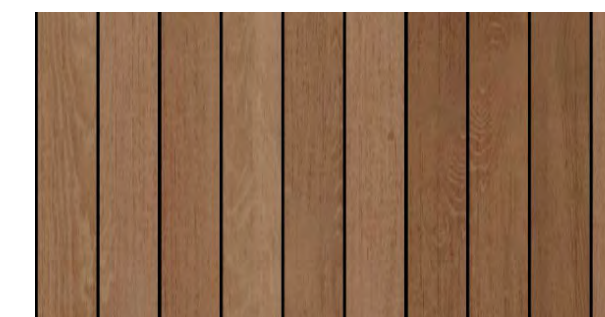
Crew Chair



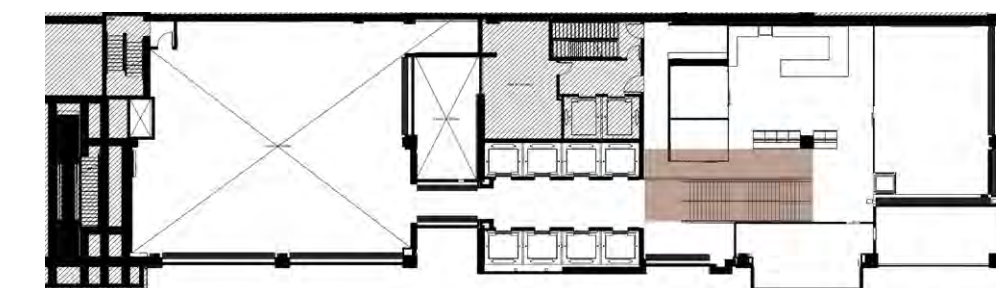
Steel



Oak Wood



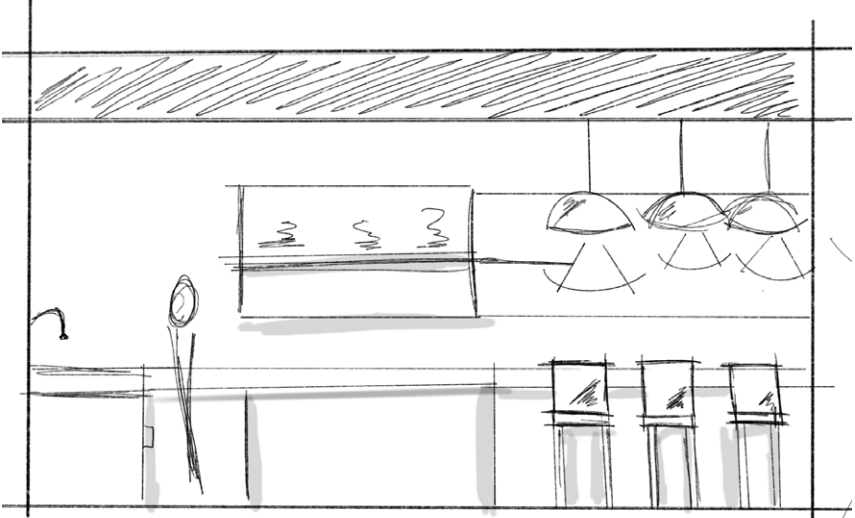
Western Red Cedar







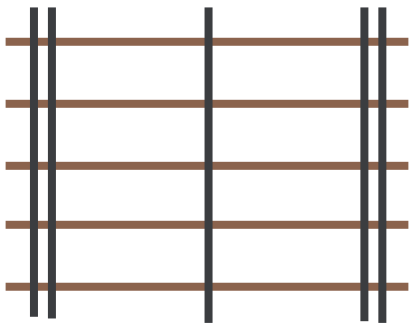
# VIEW TOWARDS WORK CAFE



LIGHT FOR  
COUNTER WORK

This communal area allows individuals to take a break or change up their working posture throughout the day.

The grid is integrated within the ceiling to relay sense of **interconnection** and **harmony**.



Campfire Collection



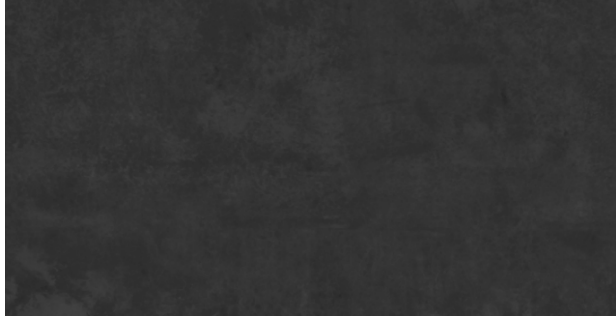
Nooi Chair



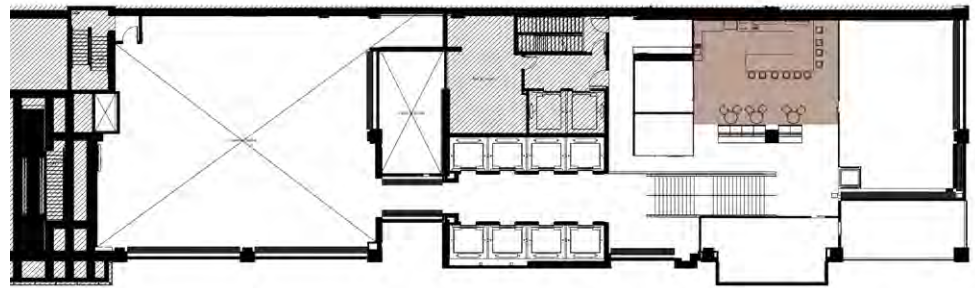
Beat Pendant - Tom Dixon



Marien 152 Stool



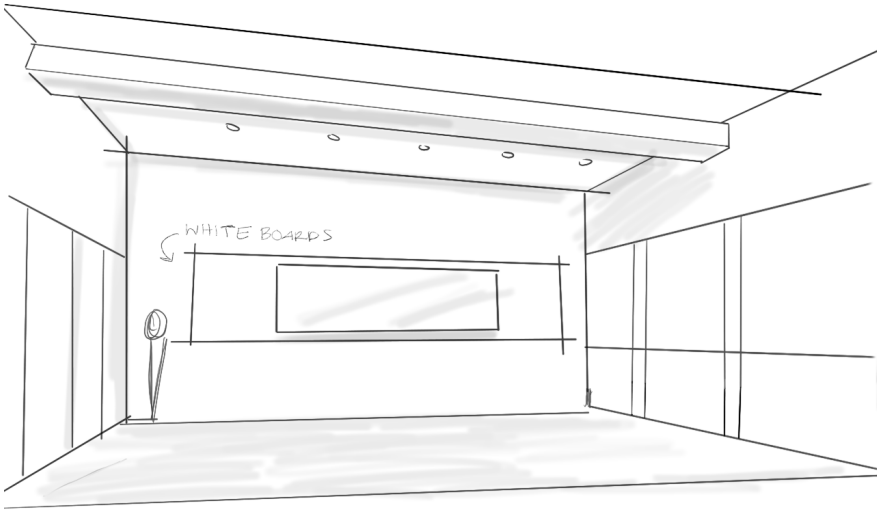
Polished Concrete



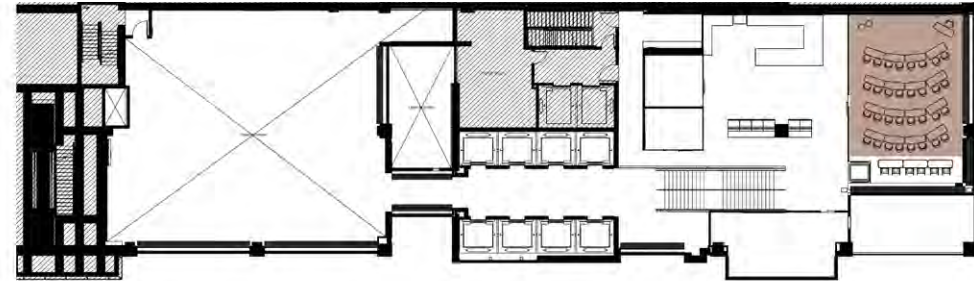
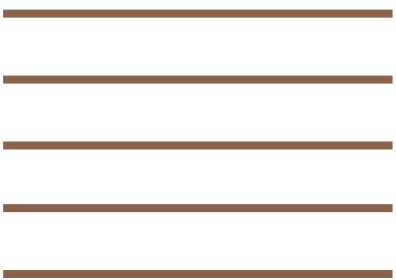


NEXT

# VIEW FROM TRAINING CLASSROOM



The training room encourages workers to come **together** and foster a learning environment. Adjacency to open areas and the cafe relay a sense of **sociability & unity**.



Node Chairs



Verb Desk



Beat Pendant - Tom Dixon



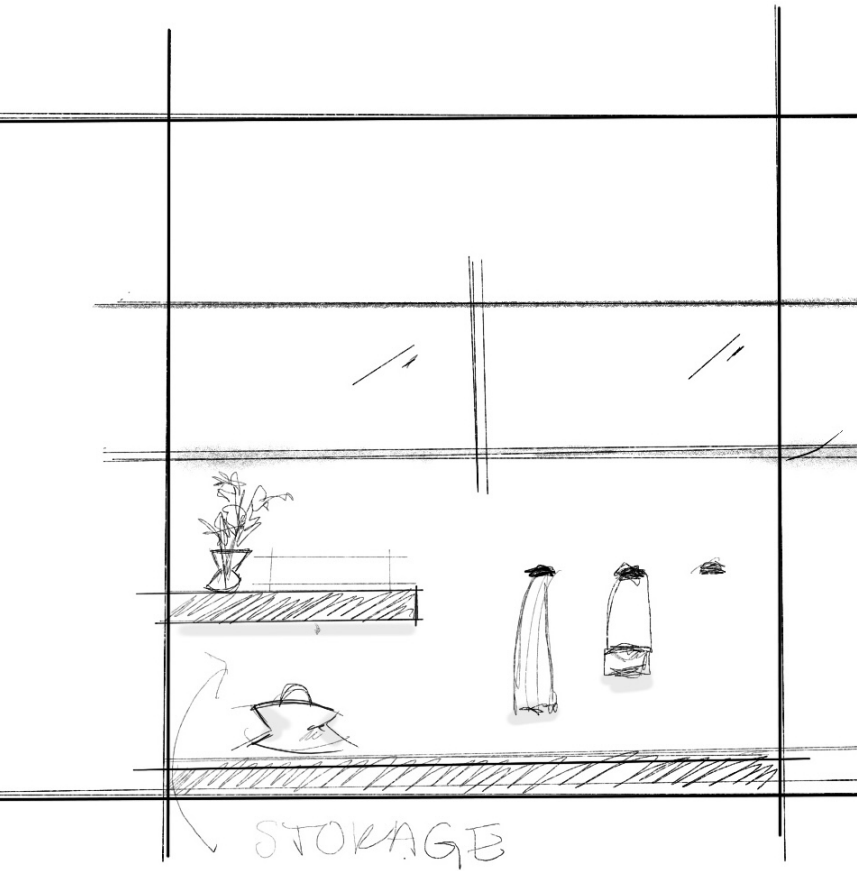
Alcazar Vinyl



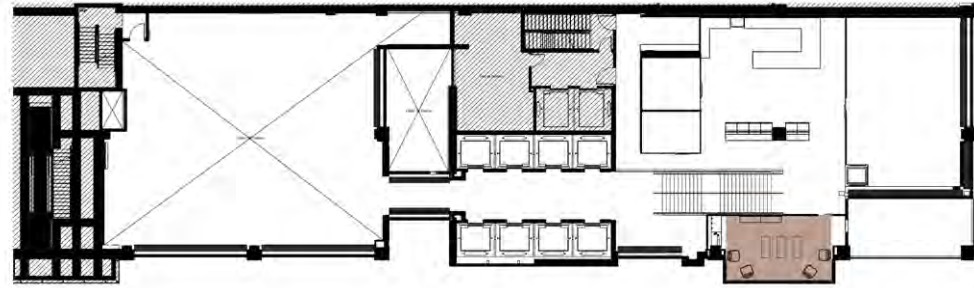
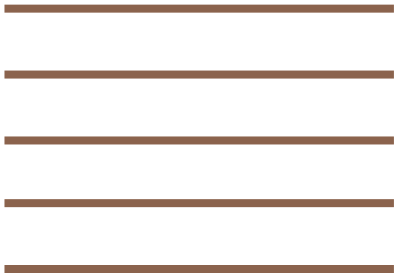
Glimmer - Woven



# VIEW OF WILDCARD SPACE - STRETCH & SERENITY ROOM



The wildcard space provides employees the opportunity to find **peace** and an outlet to **decompress**.



Hosu - Coalesse



Trestle Bench Desk



Glimmer - Woven



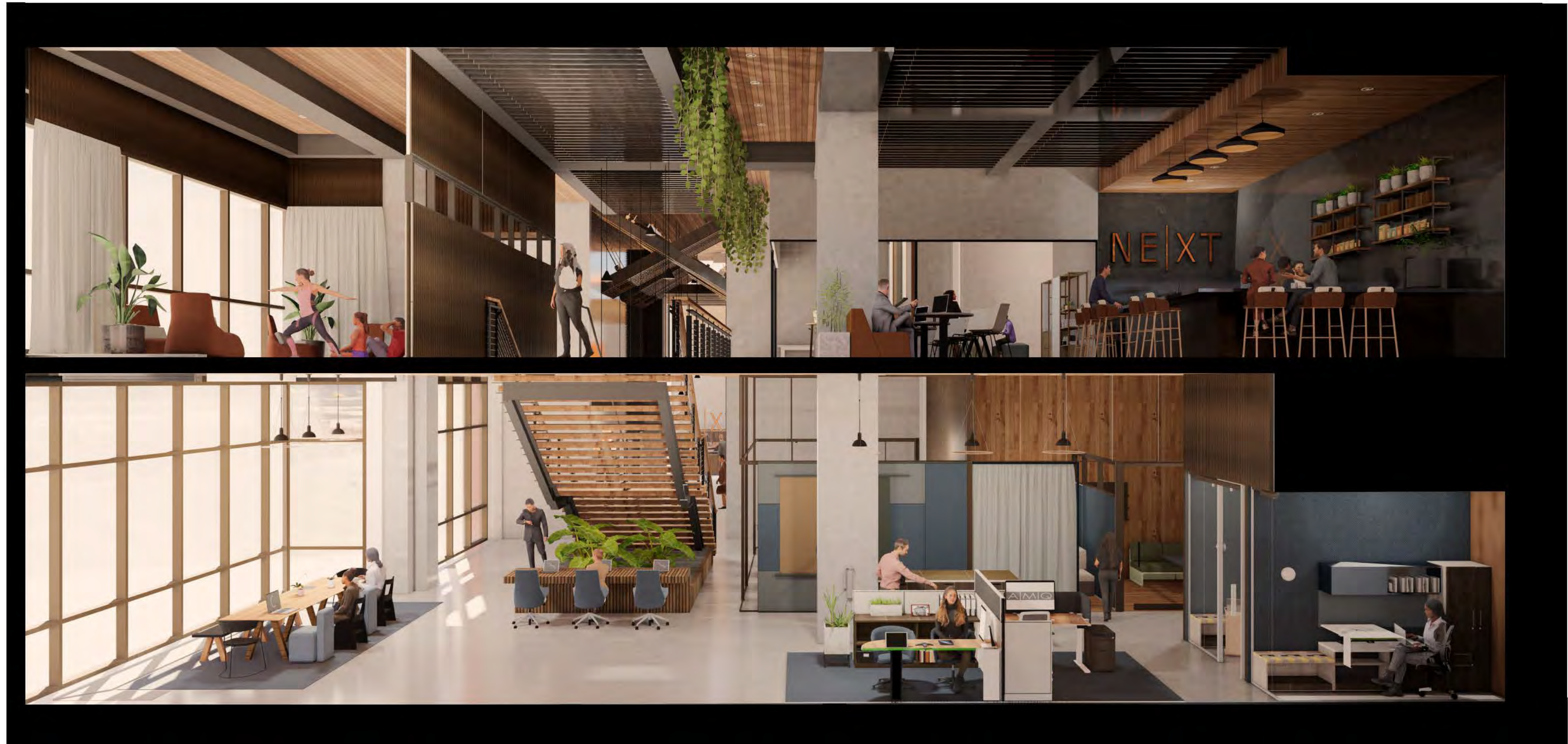
Western Red Cedar



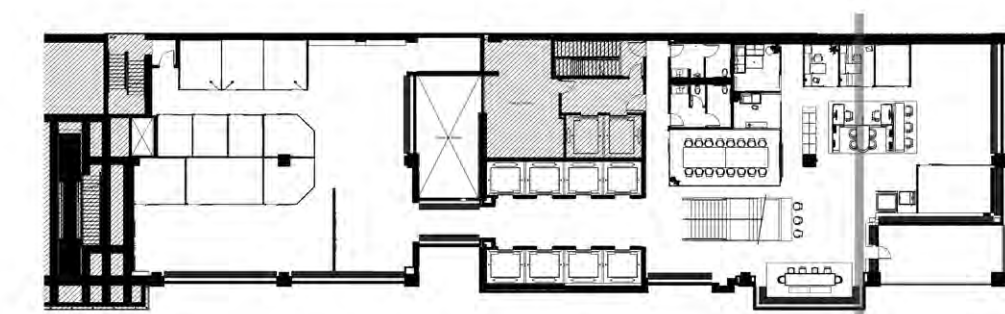
Brown Corrugated Aluminum



# SECTION PERSPECTIVE FACING WEST



This view displays the dynamic between the levels and the hues of the spaces. The first levels offers a mixture of open, shielded and enclosed spaces. The second level encourages occupants through flexible and collaborative areas. Together both the textiles and overall design symbolize the progressive stance NEXT Dallas' stands for.





# NE XT