

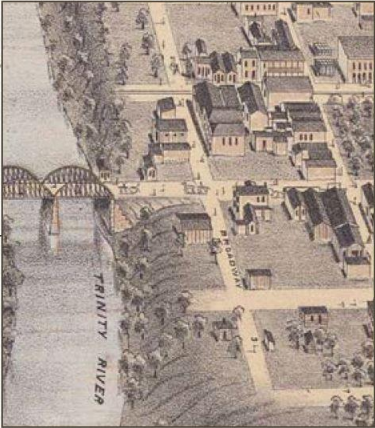


NEXT

Architecture
&
Design Studio

SITE & RESEARCH

Dallas



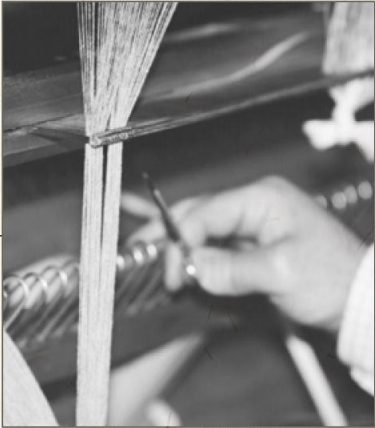
Map of Dallas from 1872

Early 1900s



Dallas Cotton Millworkers in 1913

Textile Factories



Textile artisan working at the loom

THE
POEM



*The Mill Was Made of Marble
I dreamed that I had died
And gone to my reward
A job in heaven's textile plant
On a golden boulevard.*

*The mill was made of marble
The machines were made out of gold
And nobody ever got tired
And nobody ever grew old*

*The mill was built in a garden
No dust or lint could be found
The air was so fresh and fragrant
With flowers and trees all around*

*It was quiet and restful in heaven
There was no clatter or boom
You could hear the most beautiful music
As you worked at spindle and loom*

*There was no unemployment in heaven
We worked steady all through the year
We always had food for the children
We never were haunted by fear*

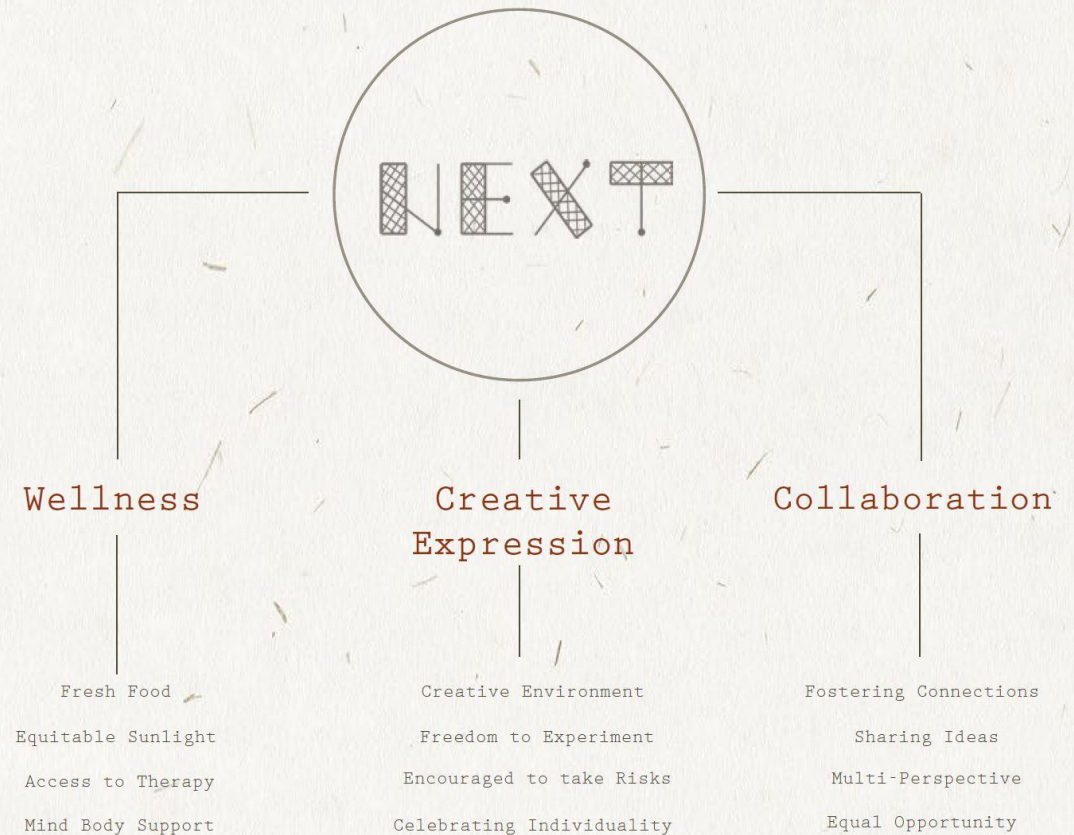
*When I woke from this dream about heaven
I knew that there never could be
A mill like that one down below here on earth
For workers like you and like me.*

- Joe Glazer (Dallas Union Millworker)

BRAND ETHOS

N E X T is an architecture and design company that values **wellness, creative expression, and collaboration** in the workplace.

Given the demanding nature of the architecture and design industry, N E X T prioritizes supporting its' employees' minds and bodies. Additionally, with design being a creative industry, N E X T welcomes and fosters experimentation as a part of its process. Finally, collaboration is recognized as an integral aspect of N E X T's culture and ethos.



SPACE AND CONNECTIVITY

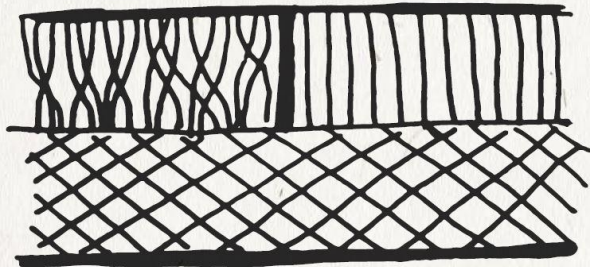
The process of making textiles—from thread to fabric—is a metaphor for *human connection* and *collaboration*.


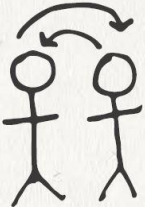
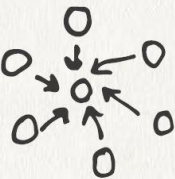
N E X T 's space is broken down into 3 types of spaces:

Connectivity by Zone

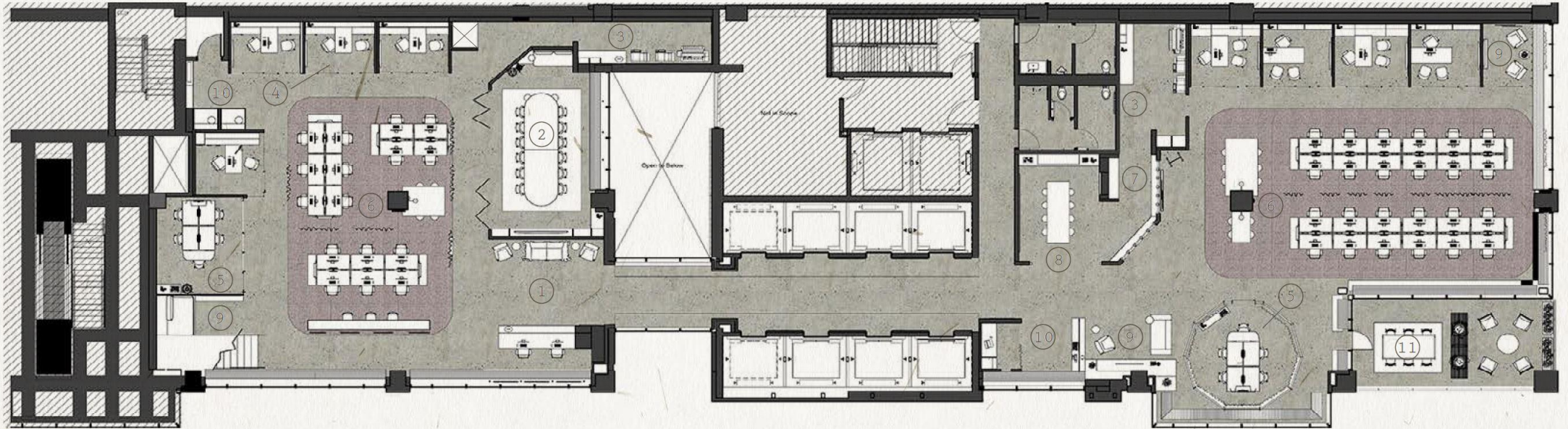
Mezzanine

3rd Floor



	X	[Grid]
Thread	Yarn	Fabric
Reflective	Social	Productive
Mother's Room Wellness Chapel Phone Room	Design Library Innovation Lab Huddle Rooms Cafe	Client Presentation Training Room Meeting Rooms Workstations
		

FLOOR PLANS



THIRD FLOOR

LEGEND

- | | | |
|-----------------------|-------------------|----------------|
| 1. Reception | 5. Meeting Room | 9. Huddle Room |
| 2. Large Meeting Room | 6. Work Area | 10. Phone Room |
| 3. Resource Center | 7. Design Library | 11. Patio |
| 4. Private Office | 8. Innovation Lab | |

FLOOR MATERIALS



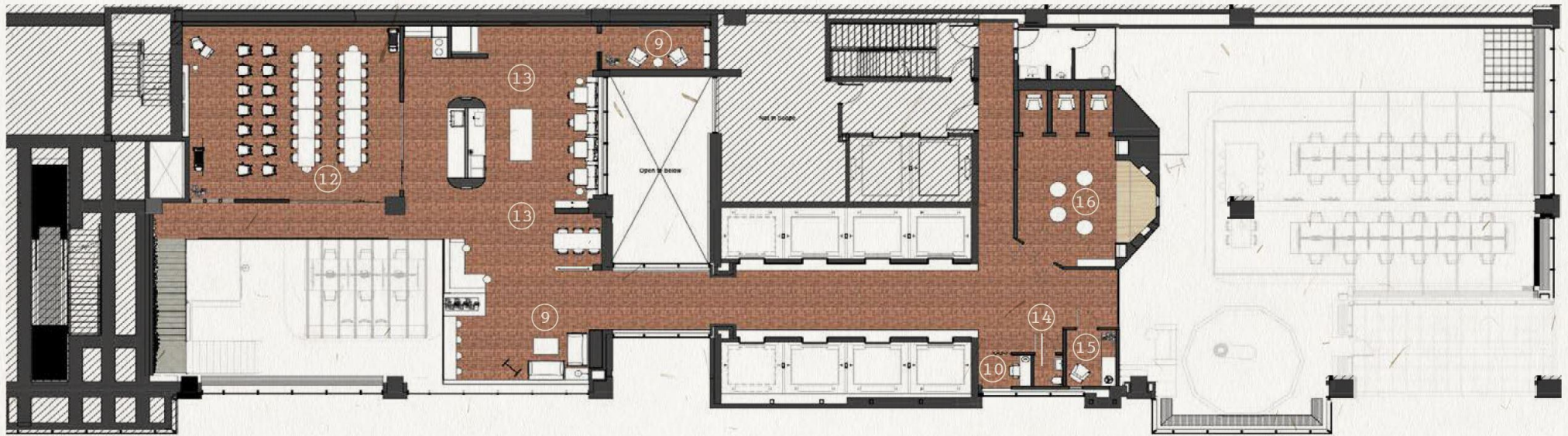
Limestone Tile



Porcelain Mosaic



FLOOR PLANS



MEZZANINE



LEGEND

12. Training Room

15. Mother's Room

13. Cafe

16. Wellness Chapel

14. Bathroom

FLOOR MATERIALS



Reclaimed Brick



White Oak



INSPIRATION



Industrial



Light



Artful



Muted

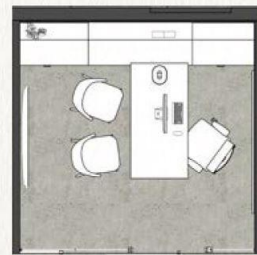
Let's take a *TOUR* through the space...



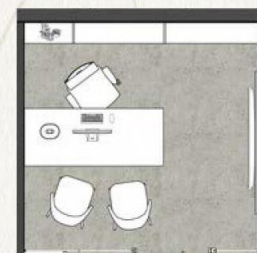
RECEPTION



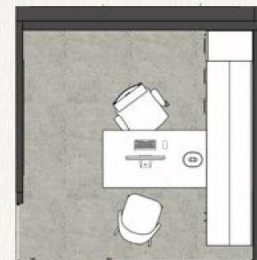
WORKSTATIONS



Option A



Option B



Option C

Materials



Vapor Paint



White Oak Wood



Rocket Fabric



Etruscan Red Paint

FF&E



V.I.A. Modular Wall System Steelcase



Tronco Chair Mattiazzi

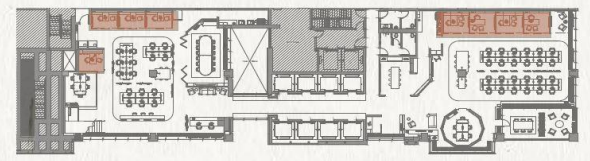


Smithfield Suspension Steelcase



PRIVATE OFFICES

N E X T offers 3 different Private Office layouts to accommodate different preferences and work styles. **OPTION A** has the most **CLOSED STORAGE** for individuals who like to keep their things hidden away. **OPTION B** has mostly **OPEN SHELVING** for individuals who prefer to display their objects. **OPTION C** has an **ADJUSTABLE DESK** to accommodate those who prefer a standing option.





STAIRCASE



MEZZANINE



CAFE



*"I dreamed that I had died
And gone to my reward
A job in heaven's textile plant
On a golden boulevard."*

- Thank You -

