

# New Black

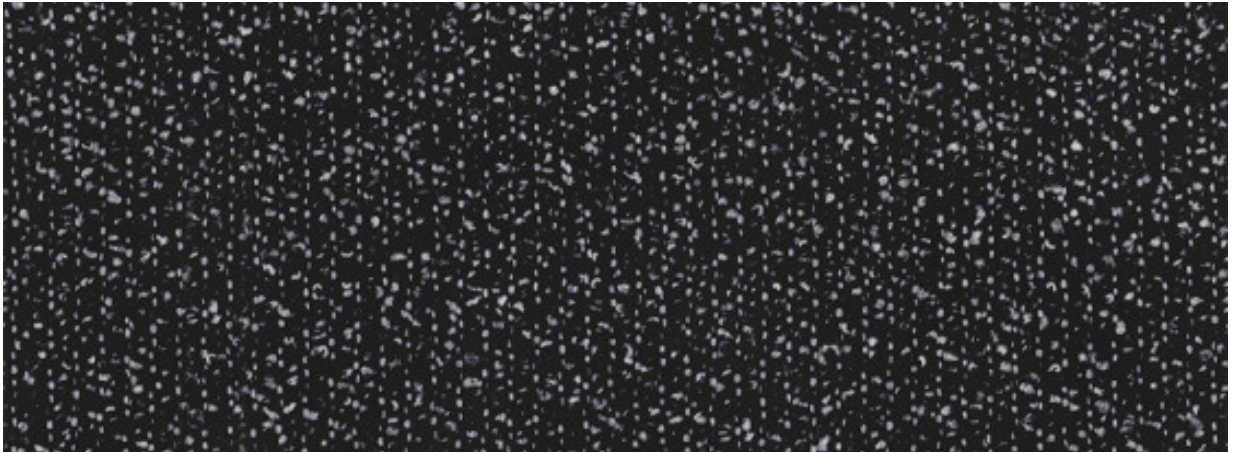
With black as the most specified color for seating, these five patterns give more beauty and choice to our black upholstery options. The patterns are beautiful on their own or as a collection, and also create a powerful story when paired together with other surface materials in various colors, textures and patterns.

To create these textiles, panel fabric scraps from the Steelcase production process are re-spun into black thread. Paired with the white recycled polyester thread, New Black is made of 100% recycled material and powers a strong circular economy story.

#### **Disclaimer**

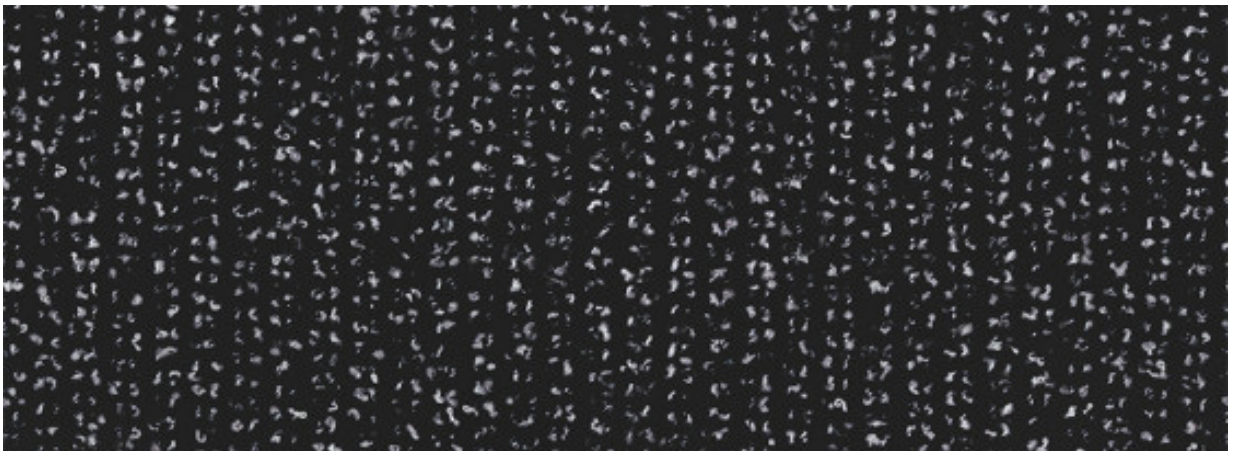
There may be variation in color, texture, and finish between this sample and the actual product.

# New Black



Jack

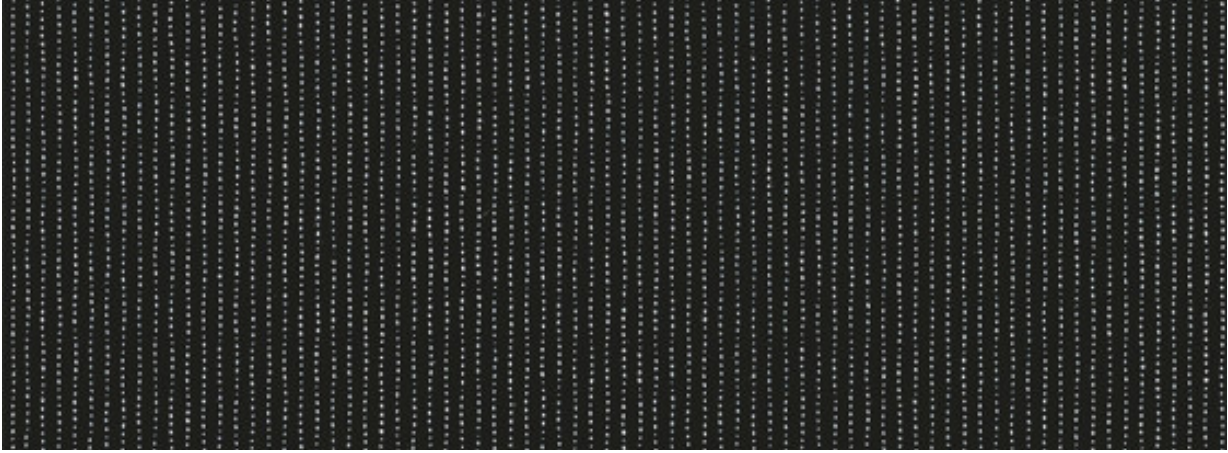
5J08



Harley

5J12





Bruce

5J10



Henry

5J11



James

5J09

# New Black

## Technical Specifications

**Contents:** 100% Post-Consumer Recycled Polyester | **Abrasion:** 100,000 double rubs

## Material Characteristics

**Width:** 56 in | **Backing:** None | **Cleaning Code:** WS | **Warranty:** 12 years

## Bleach Cleanable

## Performance Standards



### New Black: Bruce

Price Group 1, Coalesse 9

**Vertical Repeat:** 0.03 in  
**Horizontal Repeat:** 0.1 in

### New Black: Henry

Price Group 1, Coalesse 9

**Vertical Repeat:** 0.02 in  
**Horizontal Repeat:** 0.02 in

### New Black: Jack

Price Group 2, Coalesse 7

**Vertical Repeat:** 0.4 in  
**Horizontal Repeat:** 0.06 in

### New Black: James

Price Group 2, Coalesse 7

**Vertical Repeat:** 0.02 in  
**Horizontal Repeat:** 0.01 in

### New Black: Harley

Price Group 2, Coalesse 7

**Vertical Repeat:** 0.03 in  
**Horizontal Repeat:** 0.01 in

	Americas Finish Code	Europe, Middle East and Africa Finish Code	Asia Pacific Finish Code
Jack	5J08	–	5J08
James	5J09	–	5J09
Bruce	5J10	–	5J10
Henry	5J11	–	5J11
Harley	5J12	–	5J12