

m o o o i<sup>®</sup>



HANA CHAIR



MOOOI PRESENTS

# Hana Chair

*by Simone Bonanni*



HANA CHAIR

# Inspired by an unfurling flower

The Hana Chair by Simone Bonanni combines timeless comfort and unparalleled distinction. Inspired by the unfurling of a flower, its unique design captivates with organic shapes, curved lines, and an encompassing petal-like backrest. Versatile and customisable, the Hana Chair effortlessly blends into any space.



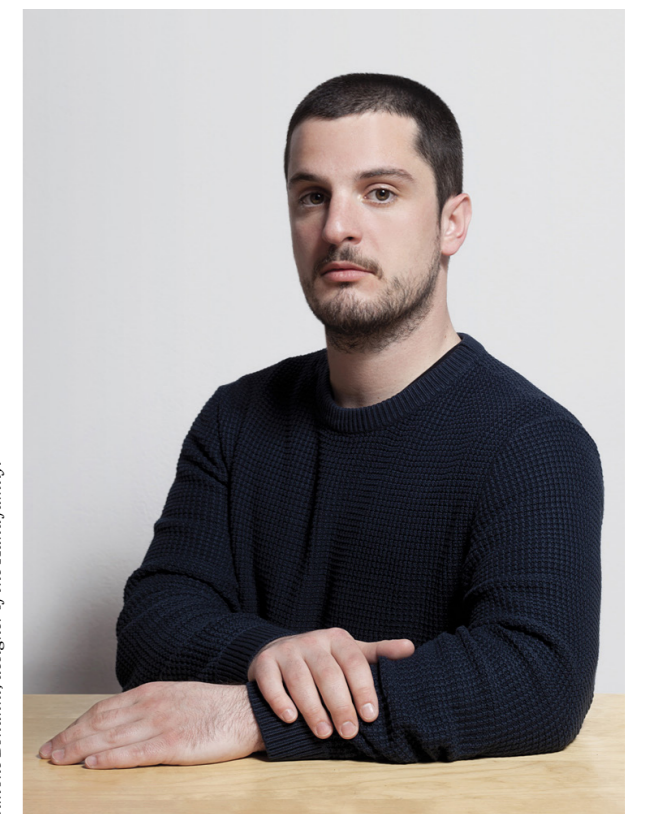
*The Hana Chair is more than a seating object. The encompassing backrest provides you with support and flexibility, prioritising comfort without compromising on aesthetics.*

**ABOUT THE DESIGNER**

Designer of the Hana Chair, Simone Bonanni, said that “Ergonomics are useless if the aesthetic is wrong,” and proves with Hana Family that you don’t have to compromise on either.

Italian designer Simone Bonanni established his Milan-based studio, Simone Bonanni Studio (SBS), in 2015. Specialising in product design and limited editions, SBS explores creativity and embraces fresh perspectives. They believe that aesthetics stem not just from personal taste, but also from a deep understanding of object essence, context, function, and meaning.

These elements find innovative ways to coexist, and each project receives dedicated attention. The studio strives to create a connection between their work and the user that is initially effective and subsequently tangible.



Simone Bonanni, designer of the Hana family.



# Hana Chair Un-Upholstered

AVAILABLE IN SIX COLOURS



Versatile and customisable, the un-upholstered Hana Chair is available in six colours. The base, which can be stackable or non-stackable, comes in chrome or matte black. The un-upholstered Hana Chair is sold in sets of 2 identically configured chairs.



**HANA CHAIR** BY SIMONE BONANNI Upholstered in Leather colour Sand with non-stackable base in Matte Black, **SAND CARPET TIDE** BY SJOERD VROONLAND for Moooi Carpets in Morning Dunes.

# Hana Chair Upholstered

FROM CONTEMPORARY FABRICS TO PREMIUM LEATHERS



Add another layer of comfort to your Hana Chair with the upholstered version. From opulent velvet to contemporary textures, with our diverse range of premium fabrics and leathers, you can configure your upholstered Hana Chair to fit your interior and lifestyle.



**HANA CHAIR** BY SIMONE BONANNI un-upholstered in colours Black and Oyster White with non-stackable base in Matte Black, **CONTAINER TABLE BODHI** BY MARCEL WANDERS with Oak table top in Natural Oil, **WALKING ON CLOUDS DAWN CARPET** BY FRONT for Moooi Carpets, **MESHMATICS** BY RICK TEGELAAR (Large shown).

## *A Commercial Crowd-Pleaser*



*Go to mood boards on [moooi.com](https://www.moooi.com) to create your dream interior.*

**HANA CHAIR** BY SIMONE BONANNI un-upholstered in colours Dusty Pink with non-stackable base in Matte Black, and Oyster White with stackable base in Matte Black, **WALKING ON CLOUDS DAWN CARPET** BY FRONT for Moooi Carpets, **MESHMATICS** BY RICK TEGELAAR (Large shown), **CONTAINER TABLE BODHI** BY MARCEL WANDERS with Oak table top in Natural Oil.



COMMERCIAL SPACES

# Leave a lasting impression and secure return visits

Hana chair's comfortable prolonged seating will invite guests to linger. Its timeless silhouette seamlessly blends with diverse aesthetics, adding understated elegance to the environment. Hana Chair not only complements existing decor but also enhances the overall atmosphere, making it an excellent choice for commercial spaces.

**HANA CHAIR** BY SIMONE BONANNI  
un-upholstered in colour Black with non-stackable base in Matte Black.



*Within commercial spaces, Hana Chair's versatility—expressed through an array of colours, fabrics, and bases—strengthens the corporate and/or brand identity, while adding a layer of unmatched comfort.*

**FLEXIBLE AND PRACTICAL**

Whether in bustling offices or vibrant retail settings, the Hana Chair seamlessly merges style with functionality. The design combines form and function to provide unmatched seating comfort, while its adaptability not only enhances visual coherence but also strengthens a corporate or brand identity.

The stackable variant of the Hana Chair brings an additional layer of convenience. It's the perfect solution for rooms that need flexible seating and easy storage. The Hana Chair maximises your available space without compromising on comfort or style.

The un-upholstered version is designed for easy disassembly and repair. This ensures that every part of the Hana Chair is replaceable, resulting in a chair that withstands intensive use and remains functional for an extended period. The Hana Chair isn't just versatile in its application but also in its durability, promising a long-lasting and dependable seating solution.

*Detail of the Hana Chair un-upholstered in Black.*



**HANA CHAIR** BY SIMONE BONANNI  
un-upholstered in colour Black with non-stackable base in Matte Black.





**HANA CHAIR** BY SIMONE BONANNI un-upholstered in colour Black with non-stackable base in Chrome, **ZIO DINING TABLE** BY MARCEL WANDERS in Black Stained, **EXTINCT ANIMALS CARPET QUEEN COBRA** BY ADA SOKÓŁ for Moooi Carpets, **HERACLEUM III LINEAR** BY BERTJAN POT in White, **EGG VASE** BY MARCEL WANDERS (Medium and Small shown), **RANDOM FLOOR LAMP II** BY BERTJAN POT in Black (Medium shown), **AMAMI POUF** BY LORENZA BOZZOLI in Blue and Dark Grey (Medium and Small shown), **MAZE CARPET TICAL** BY NOTE for Moooi Carpets.



**HANA CHAIR** BY SIMONE BONANNI un-upholstered in colour White with non-stackable base in Matte Black, **PROP LIGHT SUSPENDED** BY BERTJAN POT (single shown).



# Stackable or Non-Stackable

IN CHROME OR MATTE BLACK



Customise your Hana Chair. Choose between a stackable or non-stackable metal base, available in chrome or matte black, to suit your needs. *Un-upholstered chairs stack a maximum of 5 chairs high, and upholstered chairs stack a maximum of 4 chairs high.*

**HANA CHAIR** BY SIMONE BONANNI un-upholstered  
in colours Black, Concrete Grey, Oyster White, Dusty Pink,  
and White with stackable base in Matte Black.

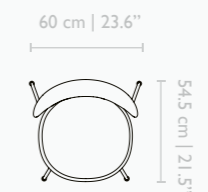
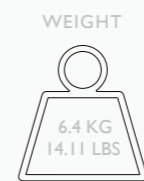
**HANA CHAIR** BY SIMONE BONANNI Upholstered in colour  
Dusty Pink, with non-stackable base in Chrome. **CONTAINER**  
**TABLE CLASSIC** BY MARCEL WANDERS RAL 3012 table top,  
**NOMNOM LIGHT** BY ODIN VISSER in Blossom.



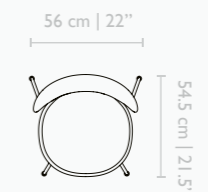
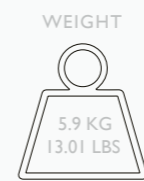


**HANA CHAIR** BY SIMONE BONANNI un-upholstered in colour Concrete Grey with non-stackable base in Matte Black, **ZIO DINING TABLE** BY MARCEL WANDERS in Black Stained, **PALLANA LIGHT** BY IDEO in Pebble, **LIQUID LAYERS BLACK BROADLOOM** BY CLAIRE VOS for Moooi Carpets from the Liquid Layers collection.

**STACKABLE HANA CHAIR**

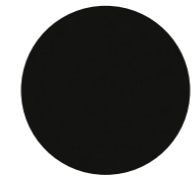


**NON-STACKABLE HANA CHAIR**

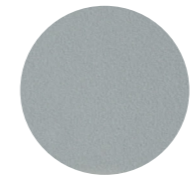


**UN-UPHOLSTERED HANA CHAIR**

Please note that un-upholstered Hana Chairs are packed and shipped in sets of two identical chairs.



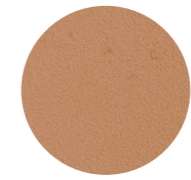
Black



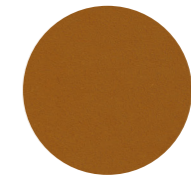
Concrete Grey



Oyster White



Dusty Pink



Terracotta



White

**UPHOLSTERED HANA CHAIR**

Configure your upholstered Hana Chair online with our most up-to-date colour and materials options.



**FRAME FINISHES**



Chrome Plated Steel



Matte Black Powder Coated Steel

*The full Hana family designed by Simone Bonanni: Where comfort and beauty unfurl in generous proportions.*



**HANA ARMCHAIR WINGBACK** BY SIMONE BONANNI upholstered in Calligraphy Bird Jacquard in colour Plum. **AMAMI POUF** BY LORENZA BOZZOLI in Blue (Small shown). **POLAR BYZANTINE CHAPTER I CARPET** BY KLAUS HAAPANIEMI for Moooi Carpets from the Polar Byzantine collection. **PERCH LIGHT FLOOR & TABLE** BY UMUT YAMAC. **UMBRELLA SQUID WALLCOVERING** BY MOOOI for Moooi Wallcovering in Indigo.

**HANA FAMILY**

The Hana family is collection of seaters designed for relaxation and comfort, with each piece seamlessly elevating any space. Whether enhancing an office, creating a cosy reading spot, or anchoring your living room, Hana finds its way home.

Create your own world in your safe space that is the Hana Armchair. Let the softness of the folds lure you in and when you step into that abundance of soft fabric, you're stepping into your own space and away from the hustle and bustle of the world. A moment of contemplation and ultimate relaxation. Mindfulness made tangible in the shape of a chair. The Hana is sculptured around the human body and its need to be pampered, embraced and accommodated for long stretches of time. The generous, cute, subtle curves allow for hours of lounging to daydream, read a book and let our imagination fly.



Hana Armchair in Solis Fog.