

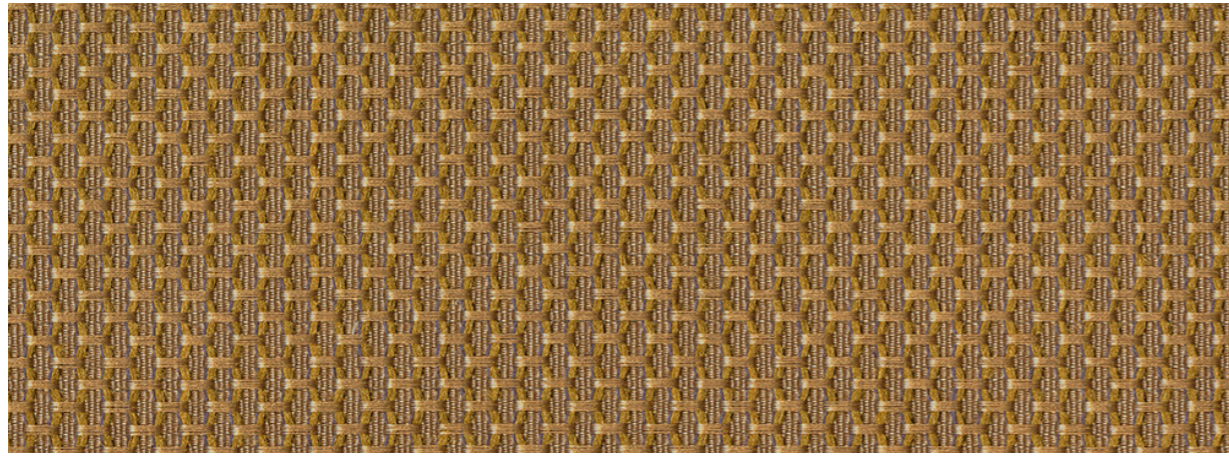
Latch

Latch features a textured basketweave-like pattern in a sophisticated neutral color palette available on vertical surface products.

Disclaimer

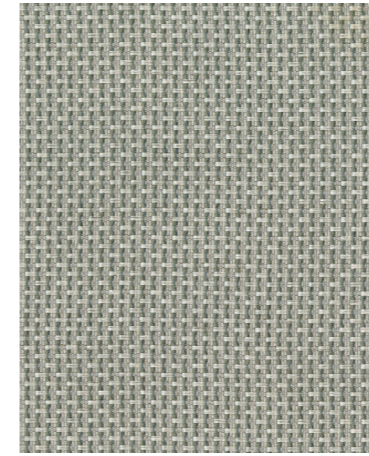
There may be variation in color, texture, and finish between this sample and the actual product.

Latch



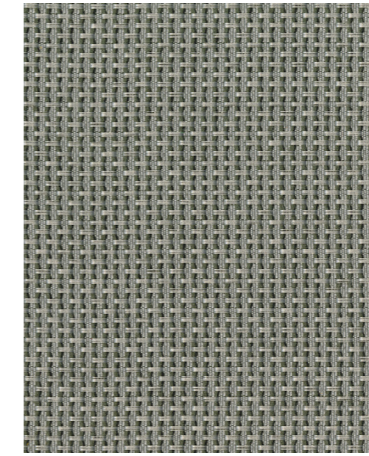
Rye

P607



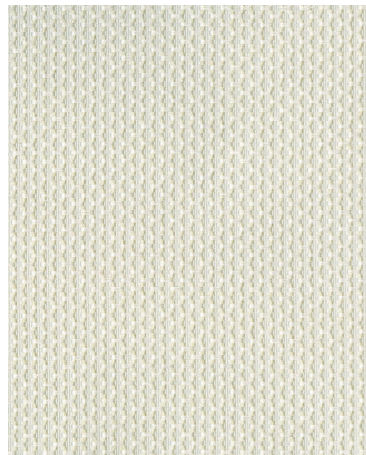
Cool Gray

P604



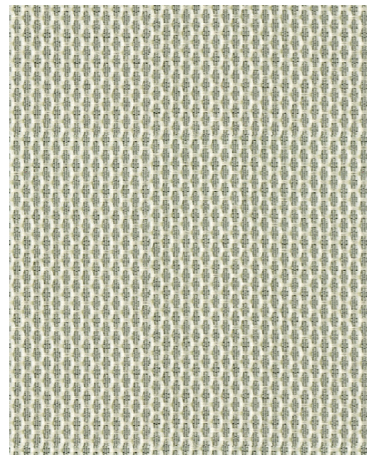
Armor

P605



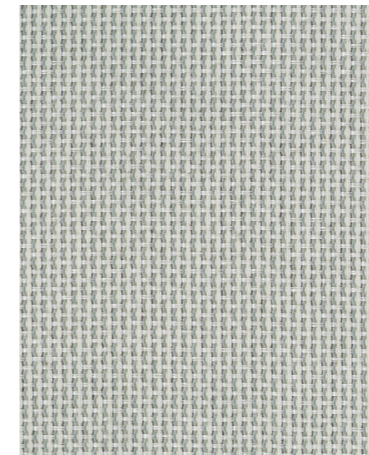
Clam

P601



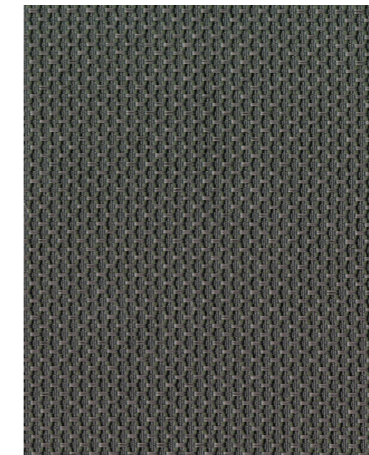
Eggshell

P602



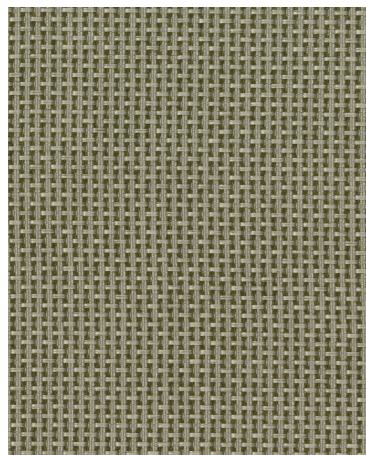
Zen

P603



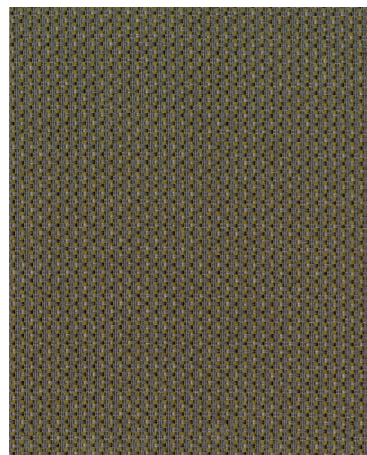
Nimbus

P609



Sentinel

P606



Billow

P608



Seashell

P600

Latch

Price Group 2

Technical Specifications

Contents: 60% Post-Consumer Recycled Polyester, 40% Pre-Consumer Recycled Content
Abrasion: 300 cycles

Material Characteristics

Width: 66 in | **Vertical Repeat:** 0.25 in | **Horizontal Repeat:** 0.25 in | **Backing:** None
Cleaning Code: S | **Warranty:** 12 years

Performance Standards



	Americas Finish Code	Europe, Middle East and Africa Finish Code	Asia Pacific Finish Code
Seashell	P600	-	-
Clam	P601	-	-
Eggshell	P602	-	-
Zen	P603	-	-
Cool Gray	P604	-	-
Armor	P605	-	-
Sentinel	P606	-	-
Rye	P607	-	-
Billow	P608	-	-
Nimbus	P609	-	-

Due to the constantly evolving dynamics of information pertaining to disinfecting and protecting against bacteria and viruses, please refer to <https://www.steelcase.com/cleaning-steelcase-products/> for the most up-to-date resources.