

Laminate

From warm to cool tones, the laminate collection is made up of both solid and woodgrain patterns. It allows you to create the environment you want. This high-performing material is available across a variety of products.

Steelcase

Disclaimer

There may be variation in color, texture, and finish between this sample and the actual product.

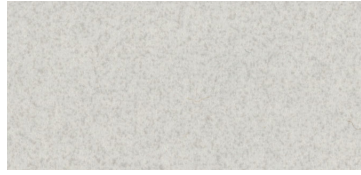
Laminate

Pattern



Vanadium Speckle

**2825
PG1**



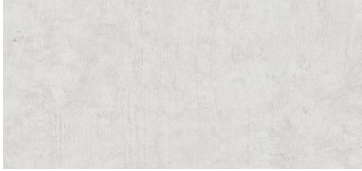
Gypsum Micro

**2921
PG1**



Sheetrock

**2UH6
PG2**



Cement

**2UH4
PG2**



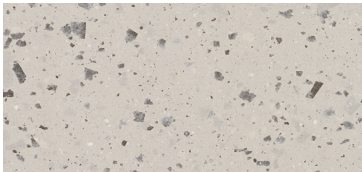
Clay Micro

**2922
PG1**



Marl Micro

**2920
PG1**



Reclaimed Aggregate

**2UH1
PG2**



Vanadium Fiber

**2850/2L50
PG1**



Driftwood Speckle

**2823
PG1**



Blonde Bronze Patina

**2870
PG1**



Smoke Speckle

**2824
PG1**



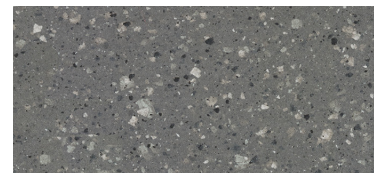
Granite Fiber

**2860
PG1**



Instant Iron Patina

**2873
PG1**

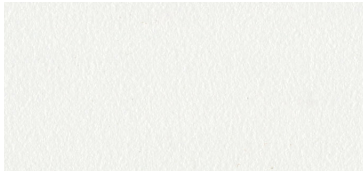


Reclaimed Gravel

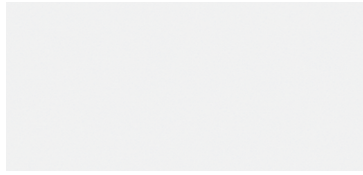
**2UH2
PG2**

Laminate

Solid



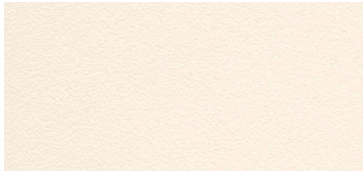
Milk 2884/2L84
PG1



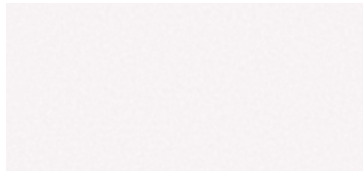
Satin White 24H1
PG3



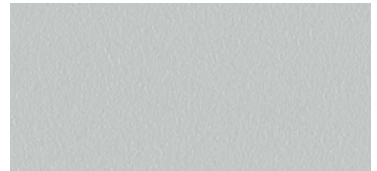
Arctic White 2730/2L30
PG1



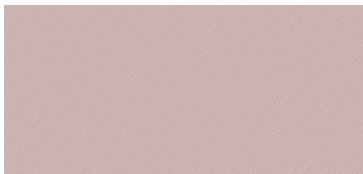
Warm White 2759
PG1



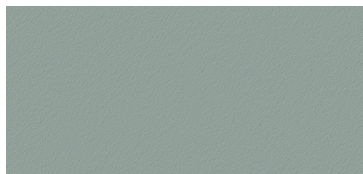
Chalk 2HWV
PG1



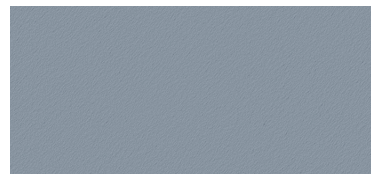
Seagull 2883/2L83
PG1



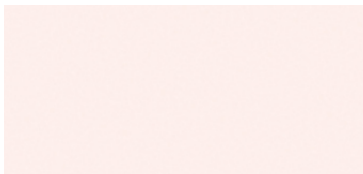
Rose 2HAB
PG1



Persian Salt 2HAA
PG1



Cloudy 2HAF
PG1



Clay 2HWU
PG1



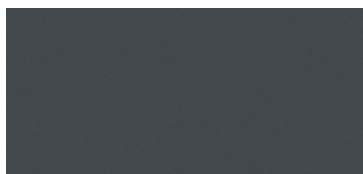
Dark Olivine 2HAE
PG1



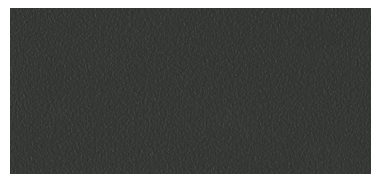
Indigo 2HAC
PG1



Dune 2885/2L85
PG1



Satin Stone 24H3
PG3



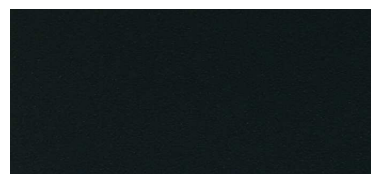
Merle 2HMG/2LMG
PG1



Satin Mocha 24H4
PG3



Satin Black 24H2
PG3



Black 2746/247L
PG1

Laminate

Woodgrain



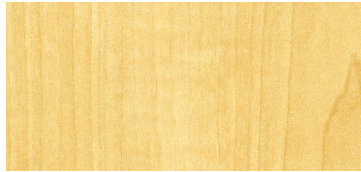
Acacia

2HAT/2LAT
PG1



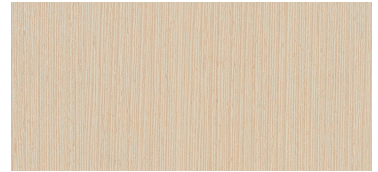
Bisque Noce

2HBN/2LBN
PG1



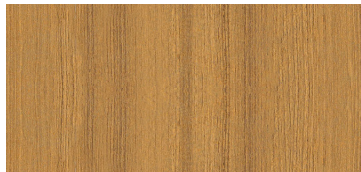
Clear Maple

2409/2L09
PG1



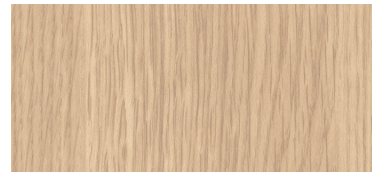
Bisque Wenge

2HBW/2LBW
PG1



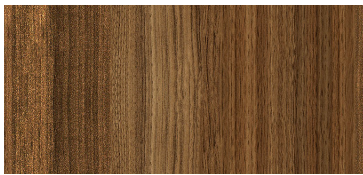
Natural Recon

2HWE/2LWG
PG1



Clear Oak

2HAK/2LAK
PG1



Planked Walnut

2HWB/2LWB
PG1



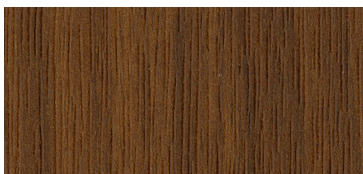
Natural Cherry/V2

2412/26L1 (V2)
PG1



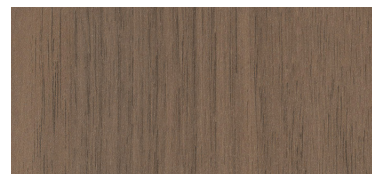
Fawn Cypress

2TH2*/2TL2
PG2/PG1



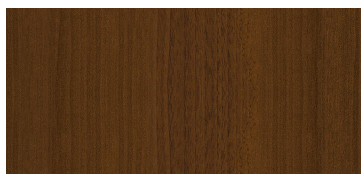
Walnut Heights

2TH7
PG2



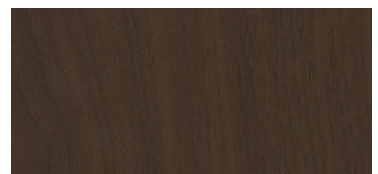
Virginia Walnut

2535/25L5
PG1



Resolute Walnut

2HWD/2LWD
PG1



Clear Walnut

2538/25L8
PG1

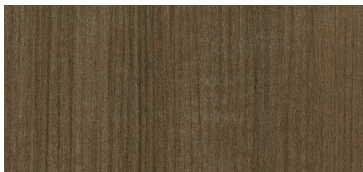
*2TH2 Fawn Cypress (HPL only) is a textured woodgrain laminate.



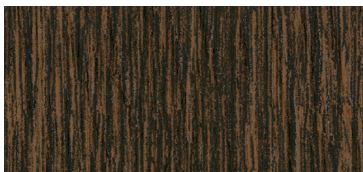
Grey Kingswood 2HWA/2LWA
PG1



Veranda Teak 2TH5
PG2



Graphite Walnut 2410/24L0
PG1



Saddle Oak 2TH4
PG2



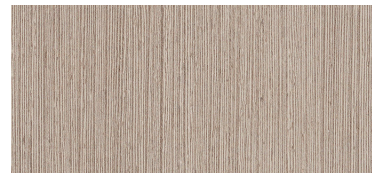
Ash Noce 2HAN/2LAN
PG1



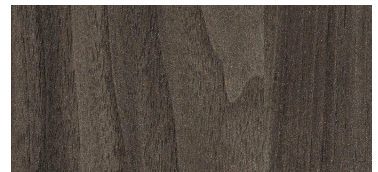
Ash Wenge 2HAW/2LAW
PG1



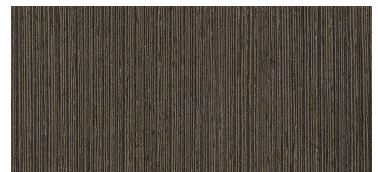
Clay Noce 2HCN/2LCN
PG1



Clay Wenge 2HCW/2LCW
PG1



Storm Noce 2HSN/2LSN
PG1



Storm Wenge 2HSW/2LSW
PG1

Laminate

Woodgrain

Price Group 1

	Americas Finish Code	Europe, Middle East and Africa Finish Code	Asia Pacific Finish Code	Supplier Color
Acacia*	2HAT/2LAT	AT	2LAT	–
Ash Noce	2HAN/2LAN	–	–	–
Ash Wenge	2HAW/2LAW	–	–	–
Bisque Noce	2HBN/2LBN	–	–	–
Bisque Wenge	2HBW/2LBW	–	–	–
Clay Noce	2HCN/2LCN	–	–	–
Clay Wenge*	2HCW/2LCW	2LGK	–	–
Clear Maple	2409/2L09	–	–	–
Clear Oak*	2HAK/2LAK	2LAK	–	–
Clear Walnut*	2538/25L8	2LW5	25L8	–
Fawn Cypress	2TL2	–	–	–
Graphite Walnut	2410/24L0	–	–	–
Grey Kingswood	2HWA/2LWA	–	–	Wilsonart 8218
Medium Cherry	2422	–	–	–
Natural Cherry/ V2	2412/26L1 (V2)	–	–	–
Natural Recon	2HWE/2LWG	–	–	Wilsonart 7996
Planked Walnut	2HWB/2LWB	–	–	Wilsonart 11192
Resolute Walnut	2HWD/2LWD	–	–	–
Smoked Walnut	2HWF/2LWF	–	–	Wilsonart 11193
Storm Noce	2HSN/2LSN	–	–	–
Storm Wenge	2HSW/2LSW	–	–	–
Virginia Walnut	2535/25L5	–	–	–
Winter on Maple	2511/25L1	–	–	–

* Denotes regional differences

Woodgrain Laminates are designed to simulate the appearance of wood, and coordinate with select wood finishes. Not all woodgrain laminate finishes have a matching wood veneer option. Due to the natural variation of wood color, grain and texture, the match between wood laminates and wood finishes will be a commercial match. Please refer to <https://www.steelcase.com/finishlibrary> for specific product and brand availability.

Pattern

Price Group 1

	Americas Finish Code	Europe, Middle East and Africa Finish Code	Asia Pacific Finish Code	Supplier Color
Blonde Bronze Patina	2870	–	–	–
Clay Micro	2922	–	–	–
Driftwood Speckle	2823	–	–	–
Granite Fiber	2860	–	–	–
Gypsum Micro	2921	–	–	–
Instant Iron Patina	2873	–	–	–
Marl Micro	2920	–	–	–
Smoke Speckle	2824	–	–	–
Vanadium Fiber	2850/2L50	–	–	–
Vanadium Speckle	2825	–	–	–

Laminate

Solid

Price Group 1

	Americas Finish Code	Europe, Middle East and Africa Finish Code	Asia Pacific Finish Code	Supplier Color
Arctic White	2730/2L30	-	-	Wilsonart D354
Black*	2746/247L	340	BLK1*	Wilsonart 1595
Chalk	2HWW	-	-	Wilsonart 1500-60
Clay	2HWU	-	-	Wilsonart D327-60
Cloudy	2HAF	-	-	Formica F7880
Dark Olivine	2HAE	-	-	Formica 8793
Dune	2885/2L85	-	-	-
Indigo	2HAC	-	-	Formica 969-58
Merle*	2HMG/2LMG	2LMG	2LMG	-
Milk	2884/2L84	-	-	Formica 9634/D427
Persian Salt	2HAA	-	-	Formica 5349
Rose	2HAB	-	-	Formica 8858
Seagull*	2883/2L83	B7	2L83	-
Warm White	2759	-	-	Wilsonart 1572-60

* Denotes regional differences

Textured

Price Group 2

	Americas Finish Code	Europe, Middle East and Africa Finish Code	Asia Pacific Finish Code	Supplier Color
Cement	2UH4	-	-	Wilsonart 8208K-16
Fawn Cypress	2TH2	-	-	Wilsonart 8206K-16
Reclaimed Aggregate	2UH1	-	-	Wilsonart 8209K-28
Reclaimed Gravel	2UH2	-	-	Wilsonart 7965K-12
Saddle Oak	2TH4	-	-	Kanak 40474
Sheetrock	2UH6	-	-	Formica 8812
Veranda Teak	2TH5	-	-	Formica 8813
Walnut Heights	2TH7	-	-	Formica 9512

Satin

Price Group 3

	Americas Finish Code	Europe, Middle East and Africa Finish Code	Asia Pacific Finish Code	Supplier Color
Satin Black	24H2	-	-	Wilsonart 15505
Satin Mocha	24H4	-	-	Wilsonart 15507
Satin Stone	24H3	-	-	Wilsonart 15504
Satin White	24H1	-	-	Wilsonart 15501

