

Healthcare by Design

DESIGNTEX

**Ideal for healthcare or other
high traffic/high abuse environments**

Quick Ship Program

100,000 Abrasion

Bleach Cleanable

Compatible with Disinfectants

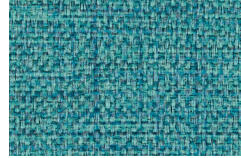
Stain Resistant



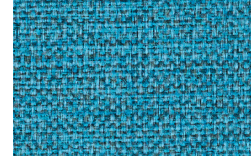
Trove Salt Water
3839-104



Patina
3839-401



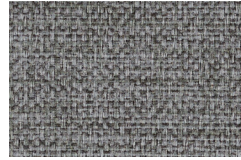
Bayou
3839-402



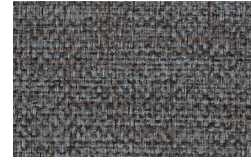
Starlight
3839-403



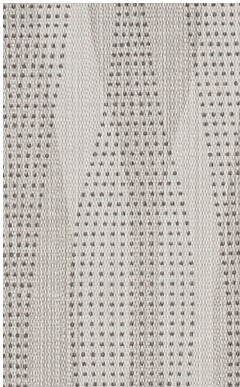
Seraph
3839-102



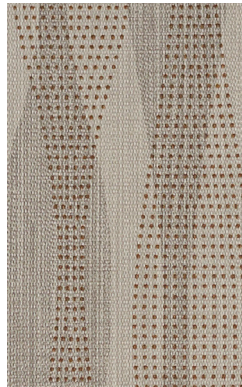
Shadow
3839-801



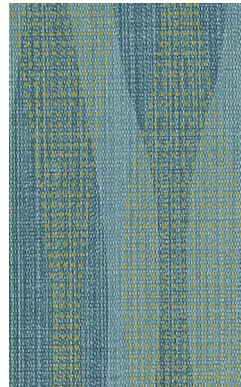
Charcoal
3839-802



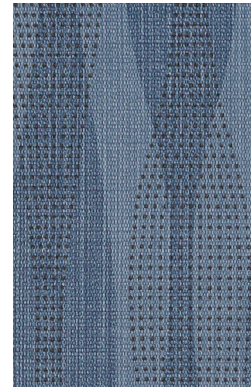
Current Mist
3599-801



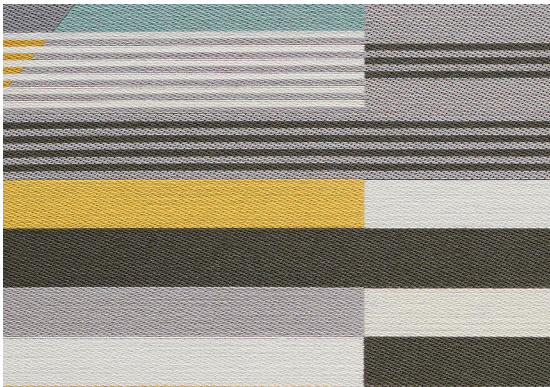
Seashell
3599-101



Aqua
3599-401



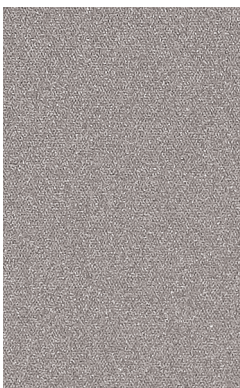
Navy
3599-403



Queue Concrete
3811-802



Tidal
3811-401



Luster Shield
3701-801



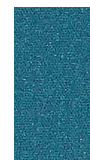
Affinity
3701-804



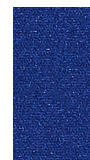
Arena
3701-102



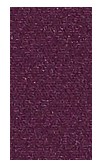
Lime
3701-501



Lagoon
3701-402



Freshwater
3701-403



Plum
3701-601



Cityscape
3701-802



Taupe
3701-103



Apple
3701-502



Cove
3701-401



Dive
3701-404



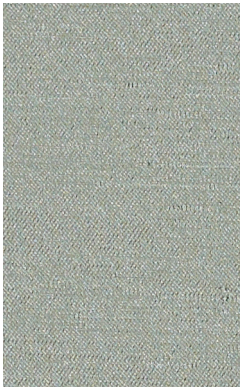
Print
3701-803



Ink Serene
3773-402



Alloy
3773-801



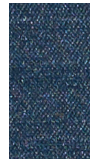
Rise Sky
3809-401



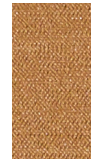
Cloud
3809-802



Turquoise
3809-402



True Blue
3809-404



Chamois
3809-201



Nickel
3809-102



Steel
3809-803



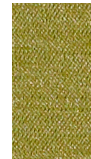
Mica
3809-101



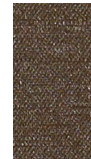
Pool
3809-403



Clematis
3809-601



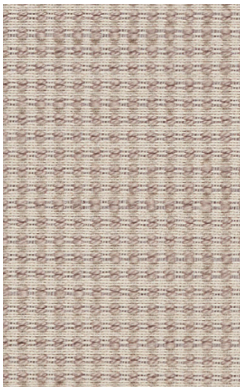
Chartreuse
3809-501



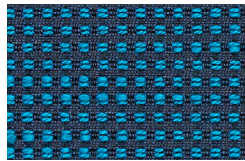
Carob
3809-104



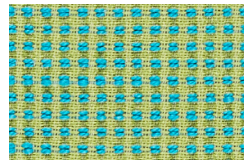
Gunmetal
3809-804



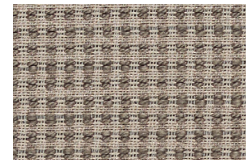
Mark Shoji
3946-101



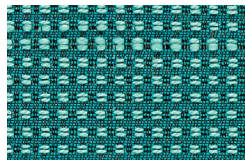
Marea
3946-404



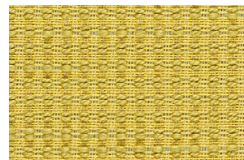
Parakeet
3946-503



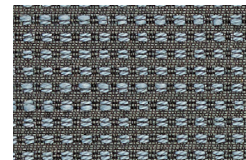
Forge
3946-102



Canal
3946-403



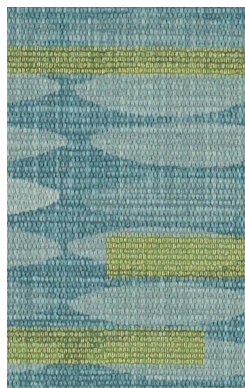
Verbena
3946-501



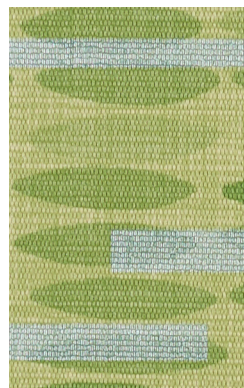
Slate
3946-802



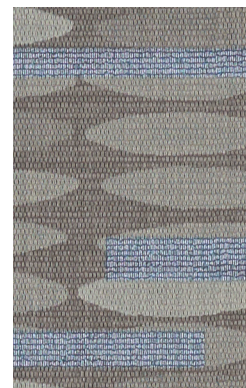
Leap Arctic
3600-101



Tide Pool
3600-402



Lily Pad
3600-502



Steel
3600-801

Healthcare by Design

Style Name	Style #	Content	Finish	Cleaning	Width	Repeat	Abrasion	Healthier Hospitals	Ink Resistant
Current	3599	100% Vinyl	Advanced Protective Topcoat	WS BC (10:1)	54 inches (137 cm)	V 6" x H 6.75"	100,000 Wyzenbeek double rubs (WS)		●
Ink	3773	76% Polyester, 17% Nylon (Solution Dyed), 7% Polyester (Postconsumer Recycled)	Nanotechnology Stain Resistant	WS BC (10:1)	56 inches (142 cm)	V 14" x H 15"	100,000 Wyzenbeek double rubs (CD)		
Leap	3600	100% Vinyl	Advanced Protective Topcoat	WS BC (10:1)	54 inches (137 cm)	V 9" x H 6.75"	100,000 Wyzenbeek double rubs (WS)		●
Luster	3701	100% Polyurethane (Polycarbonate Based)	Advanced Protective Topcoat	WS BC (4:1)	54 inches (137 cm)	None	100,000 Wyzenbeek double rubs (WS)	●	●
Mark	3946	78% Polyester, 22% Nylon (Solution Dyed)	Nanotechnology Stain Resistant	WS BC (10:1)	57 inches (145 cm)	None	100,000 Wyzenbeek double rubs (CD)		
Queue	3811	81% Polyester, 19% Nylon (Solution Dyed)	Nanotechnology Stain Resistant	WS BC (10:1)	57 inches (145 cm)	V 8.75" x H 14.75"	100,000 Wyzenbeek double rubs (CD)		
Rise	3809	100% Vinyl	Advanced Protective Topcoat	WS BC (10:1)	54 inches (137 cm)	None	100,000 Wyzenbeek double rubs (WS)		
Trove	3839	100% Vinyl	Advanced Protective Topcoat	WS BC (10:1)	54 inches (137 cm)	None	100,000 Wyzenbeek double rubs (CD)		

Meets or exceeds these ACT performance standards:



To reorder, contact your local Steelcase sales office or Steelcase dealer.

Item #20-0000002 10/20

Advanced Protective Topcoat

Advanced Protective Topcoat is a PFOA-free, stain-resistant high-performance topcoat intended for all environments, including extreme-condition installations such as hospitality, healthcare, and education. This topcoat provides easier maintenance for the coated upholstery.

Nanotechnology Stain Resistant Finish

A stain resistant finish that, thanks to the light-weight nature of nanotechnology, preserves a fabric's feel. The finish also allows any bleach-treatable fabric to remain bleach cleanable. Ask your representative about our nanotechnology stain resistant finish providers.

Cleaning Codes

BC Bleach cleanable with a 4:1 or 10:1 water-to-bleach dilution for the lifetime of the product.

WS Clean only with water-based or solvent-based cleaner. Do not saturate.

For regular maintenance of coated fabrics, always rinse the cleaned and/or disinfected area(s) with fresh water. Wipe dry and repeat if necessary.

Bleach and Disinfectant Testing

All products have been tested with bleach (sodium hypochlorite) and/or a variety of disinfectants (alcohol, hydrogen peroxide, quaternary ammonium). Scan the QR code below for specific test results.

Abrasion

Abrasion has been tested with the Wyzenbeek method using either cotton duck (CD) or wire screen (WS) as the abrasant, or the Martindale method using worsted wool as the abrasant. ACT guidelines require at least 30,000 Wyzenbeek double rubs or 40,000 Martindale cycles for woven upholsteries, or 50,000 Wyzenbeek double rubs for coated upholsteries in heavy duty single-shift application. Multiple factors affect fabric durability and appearance retention, including end-user application and proper maintenance. Wyzenbeek results above 100,000 double rubs have not been shown to be an indicator of increased lifespan.

Quick Ship Program

Colors on this card are part of the Quick Ship Program. Orders up to 50 yards ship the next business day.

Scan code with smartphone camera for additional resources and product information

