



Answer™

Steelcase®



A New Approach to the Open Plan

Many of today's most pressing business problems require creative thinking to solve them, and creativity is an essential ingredient for business growth. Organizations can help support this shift toward a more creative culture by providing workers with spaces that can support both group collaboration and the role of individual focus in the creative process.

Answer solutions offer a range of applications, aesthetics, technology integration and privacy, optimizing creativity and performance. Solutions that support both individuals and groups, in resident and nomadic settings, with the flexibility to adapt and evolve as the needs of your organization, your people and your culture shift.



Answer Fence

Answer Fence offers freestanding, light-scale space division, while providing power and data distribution and access. The fence supports screens for varying degrees of privacy and pairs well with height-adjustable and freestanding fixed-height desks.





Low profile and open base lends a light, clean aesthetic. Attached fabric screens provide visual privacy.

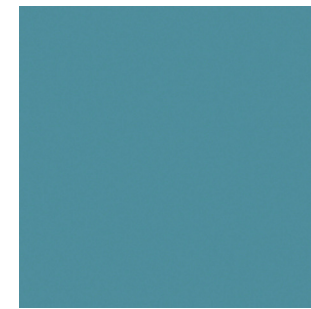


Answer Fence
Chili 4AY2

Universal Storage
Near Black Metallic 4803
DesignTex Gradate
Blood Orange 3421-901

**Ology Height
Adjustable Desk:**
Top: Storm Wenge 2HSW
Base: Black 7207

Universal Screens:
DesignTex Gamut
Persimmon 3468-703



Lagoon 4DZ6



Honey 4CZ5



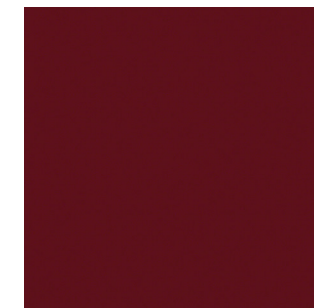
Saffron 4CZ7



Jungle 4CZ3



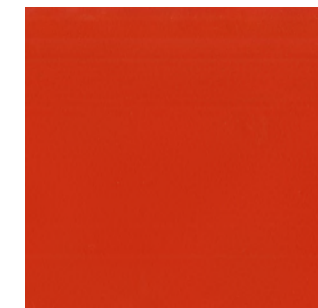
Light Peacock 4CZ8



Merlot 4CZ4



Aubergine 4CZ1



Chili 4AY2

Bold Finishes Make a Statement

Answer Fence is available in a variety of paint finishes, including accent paints, to inject personality and allow self expression in the workplace.





Fence solutions support screens for varying degrees of privacy and pairs well with height-adjustable and freestanding fixed-height desks. Fence solutions also integrate storage for work tools, materials and belongings.

Answer Fence:
Arctic White 7241

Think Chair:
DesignTex Bute Tweed Gem 3804-405

Migration Height-Adjustable Desk:
Top: Planked Walnut 3P71
Base: Arctic White 7241

Universal Privacy/Modesty Screen:
Billiard Multi-Use by DesignTex Gunmetal 5H21

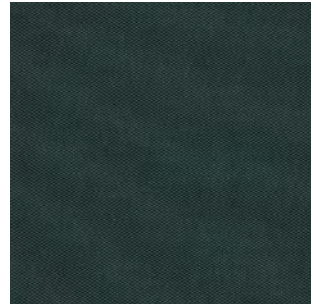




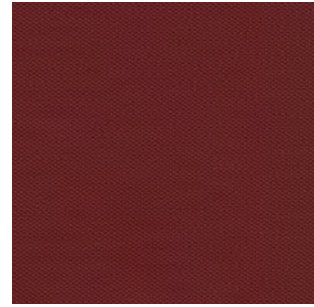
**Cogent: Connect
Royal Blue 5SD0**



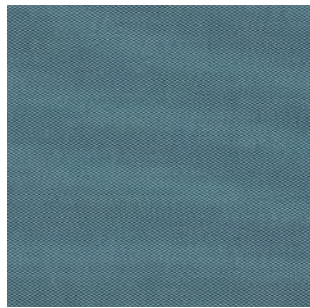
**Cogent: Connect
Aubergine 5SD1**



**Cogent: Connect
Peacock 5SD2**



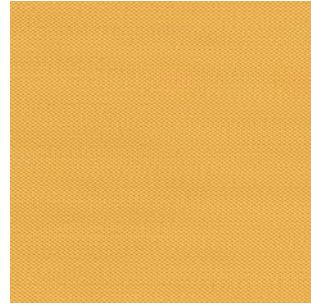
**Cogent: Connect
Lipstick 5S99**



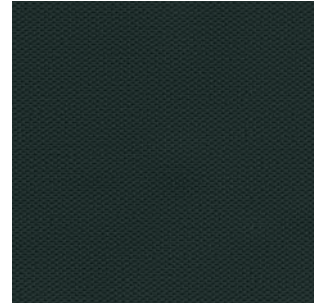
**Cogent: Connect
Lagoon 5SD3**



**Cogent: Connect
Saffron 5SD4**



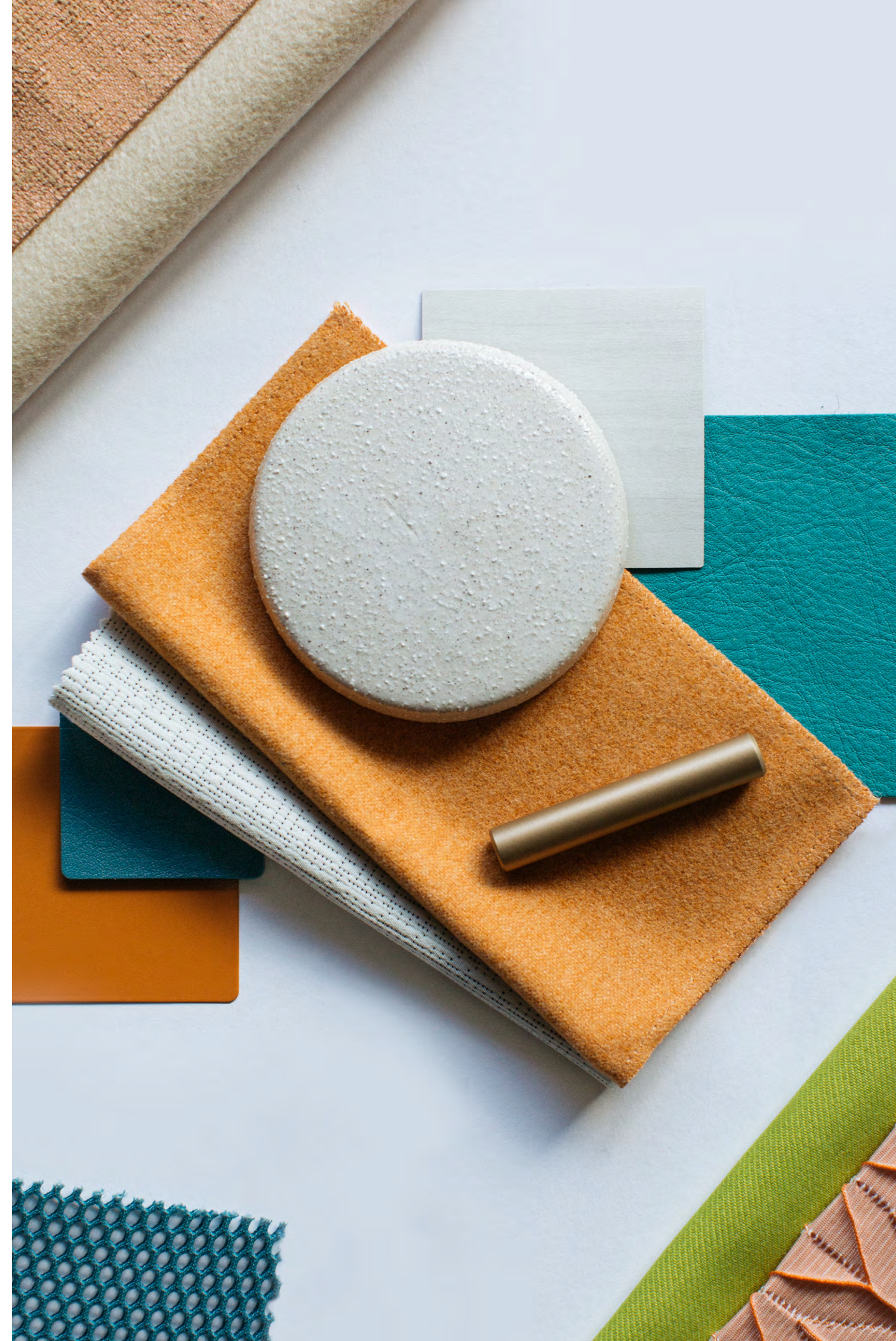
**Cogent: Connect
Turmeric 5S16**



**Cogent: Connect
Lizard 5S94**

Defined Space

Universal Fence Screens mount to the fence and are available in two heights that accommodate varying levels of privacy.





Answer Fence:
Arctic White 7241

Gesture Chair:
DesignTex Bute Lewis Seaside
3803-501

**Ology Height
Adjustable Desk:**
Top: Flat Cut Oak Composite 3JDX
Base: Arctic White 7241

Universal Fence Screen:
Cogent: Connect Royal Blue 5SD0



Answer Beam

Answer Beam helps bring down barriers, making traditional work settings more open, casual and social. The light-scale spine delivers power and data, with access at multiple elevations. The beam supports privacy screens, worksurfaces and personal storage, and works well with height-adjustable desks.



Screens provide shielding from adjacent workstations and visual distractions.



Answer Beam connects in inline, 90 degree or 120 degree configurations for flexible planning options.





Answer Beam:

Trim: Carbon Metallic 7245
 Skin: Thunder Walnut 33A2
 Screen: Billiard Multi-Use
 Cumulus 5H19

Universal Laminate

Organizer:
 Blackwood 25L6

High Density Storage:

Cabinet: Thunder Walnut 33A2
 Interior: Marlin 4AZ5

Ology Height Adjustable

Desk: Top: Thunder Walnut 33A2, Base: Merle 7360

Gesture Task Chair:

Kvadrat Steelcut Trio 815

Answer Skin:

Trim: Seagull 7243
 Skin: Alloy Tern P528

Universal Laminate 1.5H

Storage: Ash Wenge 2HAW

Cushion Top: DesignTex Pixel
 Color Bar

Panel allows for separation of the team workspace from the aisleway and allows for display of team updates and artifacts.

Workers can change posture to collaborate with teammates or slide out their storage to signal privacy and focus.





Blanch Maple
Natural Veneer **32A2**



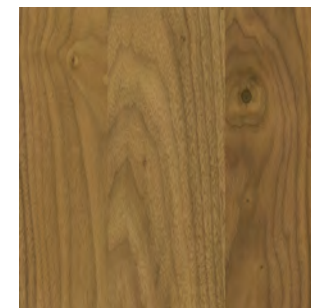
Thunder Walnut
Natural Veneer **33A2**



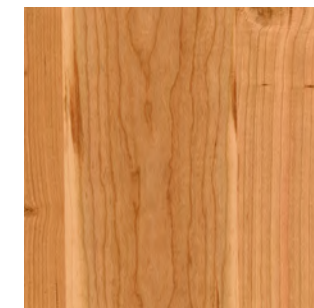
Volcanic Oak
Natural Veneer **36A2**



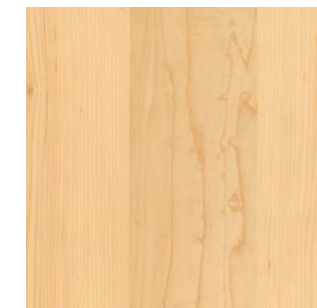
Planked Oak
Veneer **3P61**



Planked Walnut
Veneer **3P71**



Planked Cherry
Veneer **3P41**



Planked Maple
Veneer **3P51**

Taking Cues from Nature

The use of natural materials, plurality of shapes, forms, patterns and textures can make the work experience more human centered.



Universal Worksurface:
Top: Planked Oak 3P61
Legs: Arctic White 7241

Answer Beam:
Trim and Skins Platinum
Metallic 4799

Universal Laminate Overhead:
Arctic White 2L30,
Clay Noce 2LCN

Gesture Task Chair:
Frame: Light/Light (Platinum
Metallic, Seagull, Merle)
Back/Seat: Kvadrat Galaxy 108

**Universal Laminate
1.5H Storage:**
Common Top: Clay Noce 2HCN
Case: Arctic White 2L30

B-Free Cube:
DesignTex Bute Lewis Berry

**Answer Beam
Boundary Screen:**
Clay Noce 2HCN



Answer Beam settings support a variety of both beam-mounted and freestanding storage solutions, with integrated power and cable access options.





Answer Panel

Answer panels are designed to create spaces within the open floorplan that help organizations balance privacy and collaboration, while providing for the broadest range of applications and materiality. The panel delivers robust technology support and long term flexibility to meet changing needs.



Answer Panel:
 Exterior Skin: Arctic White 2730
 Interior Skin: Designtex Billiard
 Panel Cumulus 3549-803
 Trim: Arctic White 7241

Universal Laminate Storage:
 Case: Arctic White 2L30
 Cushion Top: Kvadrat Divina
 Melange 731

**Ology Height-Adjustable
 Desk:**
 Top: Clear Oak 2HAK
 Base: Arctic White 7241

**Elective Elements
 Organizer Shelf:**
 Clear Oak 2HAK

Gesture Task Chair:
 Kvadrat Remix 722
 Scheme: Medium

B-Free Lounge Seating:
 Kvadrat Canvas 614, Designtex
 Bute Tree Natural 3808-101,
 Kvadrat Divina 846, Designtex
 Rothesay Marble 3442-101

Universal Personal Shelf:
 Arctic White 7241

B-Free Coffee Table
 Top: Walnut 2535
 Base: Lux Matte Brass



Panel solutions make it easy to create owned and shared work settings in close proximity, supporting collaboration alongside privacy.



Panel mounted and height-adjustable desk integrated storage make the most of a compact space. A broad range of material options provides opportunity to customize the look of any space.



Frameless glass screens give access to natural light while still providing additional boundary.



Taller panels at the end of a cluster define a space for collaborating, socializing or rejuvenation. An integrated monitor lets workers quickly share and co-create content in close proximity to their individual workspaces.

Answer Panel:
 Interior Skin: Designtex Brushed Flannel Black 3797-804
 Exterior Skin: Designtex Brushed Flannel Black 3797- 804
 Trim: Merle 7360

Coalesse Enea Cafe Wood Stool:
 Elmosoft Leather Ebony L112

turnstone Campfire Slim Table:
 Exterior: Bisque Noce 2LBN
 Interior: Arctic White Gloss 4140

Universal Slim Shelf:
 Saffron 4C27

Ology Height-Adjustable Desk:
 Top: Bisque Noce 2HBN
 Base: Arctic White 7241

Gesture Task Chair:
 Back/seat: Kvadrat Divina md 0913
 Base/frame: Platinum Metallic 4799
 Shell: Seagull 6053
 Arms: Merle 6527

dash mini LED light:
 Honey 6805

Eyesite Flat Panel Monitor Arm

Blu Dot Bumper Small Leather Ottoman:
 Terra Cotta Leather



Boundary screens can be integrated to provide a refined alternative for aisle-way privacy and materiality. Panels provide efficient routing and access to power.



Standing height worksurfaces and tall stools provide options to stand or perch for short-term tasks, while personal caddies are secure storage for personal valuables.

Answer Panel:
 Trim: Arctic White7241
 Skins: Arctic White 2730,
 Designtex Rocket 2693-404
 Frameless Glass: Clear Glass 6500

Steelcase Series 1 Task Stool:
 Seat: Kvadrat Canvas 2-556
 3D Microknit: Nickel 5T20
 Frame/Lumbar: Seagull 6053
 Base: Scarlet 5U24

Answer Boundary Screens:
 Arctic White 2730

SOTO Personal Console

Universal Worksurface:
 Ash Wenge 2HAW

dash mini LED light:
 Citron 4AX1



Along with space definition, panels provide a high-functioning backdrop for a collaborative team. Panels host a monitor for digital sharing and back-painted glass provides an expansive writeable surface with the added surprise of color.



Merlot 6577



Peacock 6575



Honey 6597



Saffron 6579



Lagoon 6578



Aubergine 6571



Jungle 6576

Refined Expression

Answer Back Painted Glass skins provide the functionality of a whiteboard in combination with an exquisite glass surface, and provide the extraordinary aesthetic that organizations are continually searching for.



Tucked behind an open team space, panel solutions create enclosed, private spaces that can support individual or dyadic focus work. Spaces can be casual with a lounge posture or hardworking with a height-adjustable desk to support healthy posture changes.

Answer Panel:
 Top Interior Skin: Saffron back painted glass 6572
 Top Middle/Bottom Interior Skin: Designtex Brushed Flannel Light Grey 3797-801
 Exterior Skin: Designtex Brushed Flannel Light Grey 3797-801
 Trim: Black 0835

Universal Personal Shelf:
 PerfectMatch Amethyst 4A27

turnstone Campfire Big Table:
 Black Laminate 2746

Think Stool:
 Designtex Draft Hellum 3703-801, Platinum Metallic 4799

turnstone Campfire Skate Table:
 Base: Matte Brass
 Top: gold teak 3GAX

turnstone Campfire Foot Rest:
 Plastic: white

turnstone Campfire Lounge:
 Elmosoft Leather Plum
 Pleasure L116

turnstone Campfire Slim Table:
 Black Laminate 2746

dash mini LED light:
 Amethyst 4A27

Ology Height-Adjustable Desk:
 Top: Volcanic Oak 36A2
 Base: Platinum Metallic 4799

Gesture Chair:
 Upholstery: Kvadrat Hallingdal 590
 Scheme: light/light



Connect with us:

Find a Sales Consultant or Dealer

steelcase.com/contact-us/

Sales Questions

call us at 888.STEELCASE

Follow us:

 [instagram.com/steelcase](https://www.instagram.com/steelcase)

 [pinterest.com/steelcase](https://www.pinterest.com/steelcase)

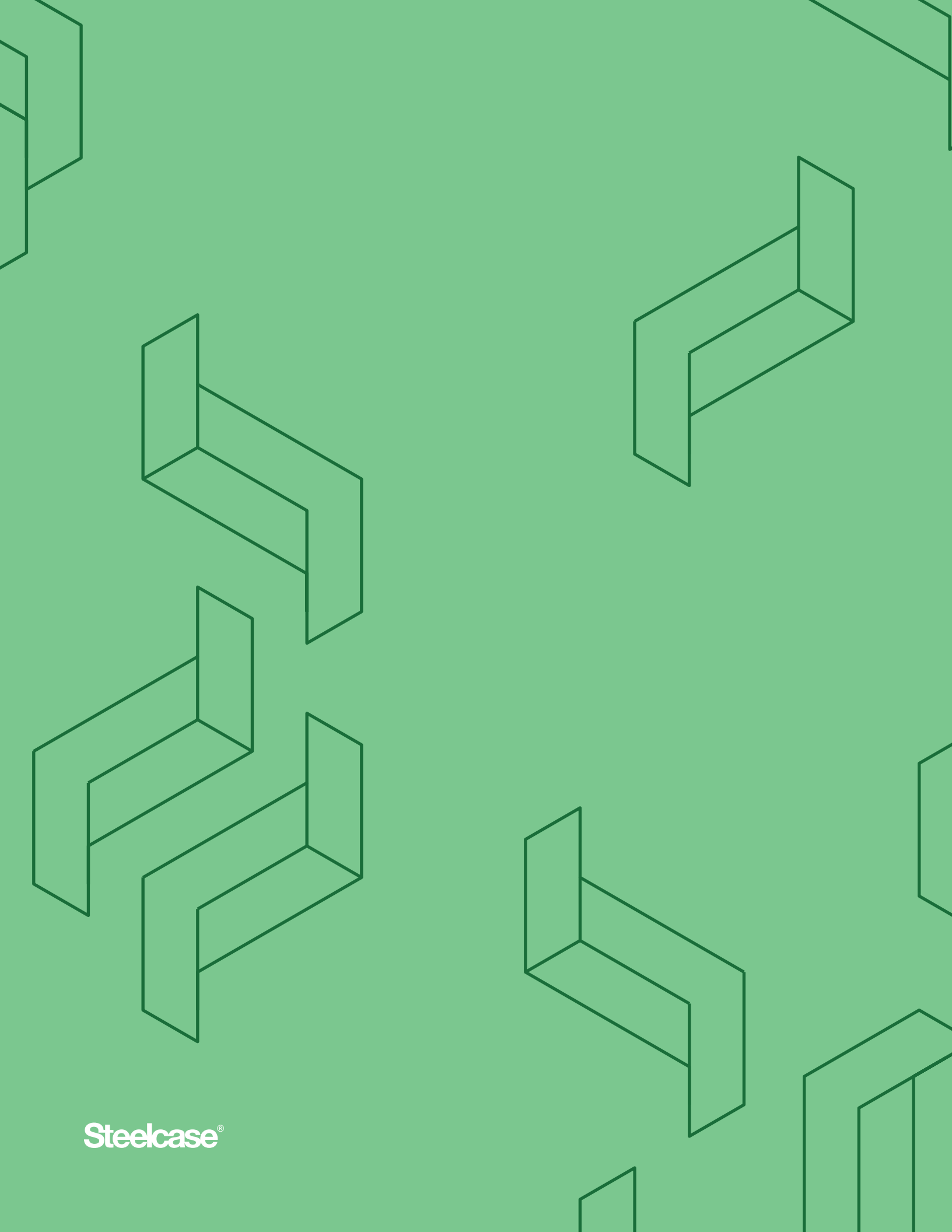
 [facebook.com/steelcase](https://www.facebook.com/steelcase)

 twitter.com/steelcase

 [linkedin.com/company/steelcase](https://www.linkedin.com/company/steelcase)

Steelcase®

18-0005469 ©2018 Steelcase Inc. All rights reserved. All specifications subject to change without notice.
Trademarks used herein are the property of Steelcase Inc. or of their respective owners.



Steelcase®