



IM#: 18-0100543

**Answer™**  
beam solutions

**Steelcase**

# Lighten Up

Answer™ beam helps bring down barriers, making traditional work settings more open, casual and social – in tune with modern workplace priorities. The light-scale spine delivers power and data, with access at multiple elevations.

The beam supports privacy screens, worksurfaces and personal storage, and works well with height-

adjustable desks. As part of an integrated Answer solution, the beam offers the choice and control people need to truly engage at work.

Beam is part of the popular Answer portfolio – a best-selling platform of products designed to meet a wide range of user and application needs, also including Answer panel and Answer fence.

Answer beam's integrated top cap rail supports mounted storage, screens, worksurfaces and work tools, greatly expanding possibilities for varied work settings that feel more open and inviting. Answer beam is available in a wide variety of materials and can be used to create in-line, 90° and 120° applications that support individual and focused work, as well as collaboration in pairs or groups.



IM#: 18-0100391 | SM: ANSWER BEAM (AMETHYST), OLOGY HEIGHT-ADJUSTABLE DESK (ESPRESSO OAK WORKSURFACE, MERLE BASE), ANSWER PRIVACY SCREEN (BILLIARD TEAK), ANSWER THIN TRIM PANELS (DESIGNTEX GAMUT GREIGE), ANSWER BOUNDARY SCREEN (ESPRESSO OAK WOOD), UNIVERSAL AND DUO SLIM STORAGE (ARCTIC WHITE), GESTURE CHAIR (MAHARAM CODA)



IM#: 18-0100890

## DYNAMIC SURFACES

Answer beam accommodates tethered, fixed-height desking and can also be combined with height-adjustable desks to encourage healthy movement and posture support, from seated to standing height.



IM#: 17-0083875

## INTEGRATED POWER

A robust power and data system seamlessly integrates into Answer beam. Multiple access points and cable management options allow workers to connect to power, and each other, with ease.



IM#: 18-0100060

## CUSTOMIZED PRIVACY

A range of privacy solutions, including beam-mounted screens and boundary screens, define personal space, support focused work and provide an area to display work and personal items.



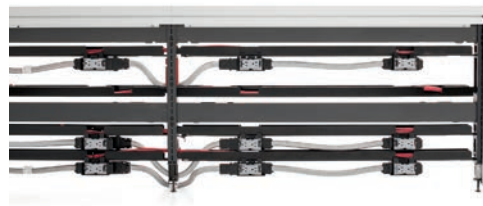
IM#: 18-0100549

## FLEXIBLE STORAGE

Answer beam settings support a variety of both beam-mounted and freestanding storage solutions, with integrated power and cable access options.

## POWER CAPABILITIES

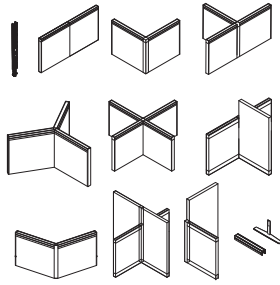
Answer beam simplifies routing and access to power and data, so technology is always available. Power and data access is available in the base, just above the base and at 20" high. Answer beam features clean, subtle power access with power and data cutouts in steel skins. That means smoother work processes and better connections to information and each other.



## STATEMENT OF LINE

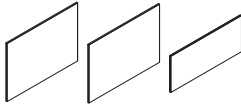
### JUNCTIONS AND CONNECTIONS

Horizontal frame packages: 24"-72"W  
End-of-Run, In-line, L, T, X, V and Y  
Junctions: 28.5"H  
Beam to Panel Connections:  
L, T, X: 42"-66"H  
Beam Top Cap Rail: 24"-96"W  
Panel and Beam Foot



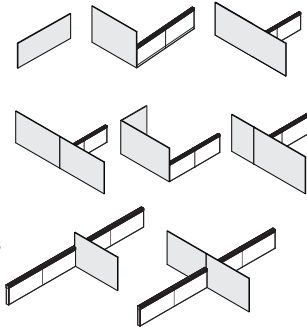
### SKINS

Fabric (Standard Height, To the Floor,  
Big Open Base): 24"-72"W  
Steel (Standard Height, To the Floor,  
Big Open Base): 24"-72"W  
Laminate and Wood (Standard Height,  
To the Floor): 24"-48"W



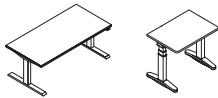
### SCREENS

Universal Beam Screen:  
24"-96"W; 13.5", 19.5"H  
Beam End-of-Run Boundary Screens  
(Single-Sided, Spanning, Split, L):  
27"-72"W; 28.5", 42", 48"H  
Beam On-Module In-line Boundary  
Screens, (T and X Configurations):  
27"-72"W; 42", 48"H  
Beam Centered In-line Boundary Screens  
(Single-Sided): 24"-72"W; 28.5",  
42", 48"H



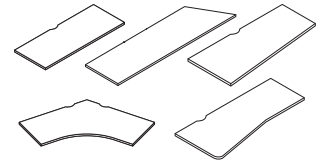
### HEIGHT-ADJUSTABLE DESKS

Migration: 23"-35"D; 46"-70"W  
Ology: 23"-36"D; 34"-76"W



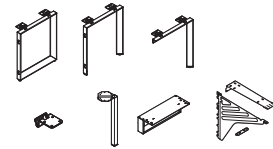
### SYSTEM WORKSURFACES

Straight: 18"-30"D; 24"-96"W  
Straight 120°: 24", 30"D; 48"-72"W  
Tapered: 18/24", 24/30"D; 48"-72"W  
Taper-Flat: 18/24", 18/30", 24/30"D;  
60", 72"W  
120° Corner: 24", 30"D; 36"-48"W



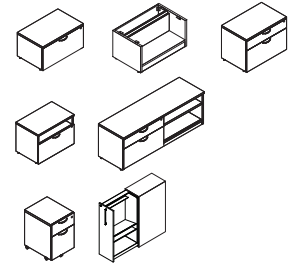
### WORKSURFACE SUPPORTS

FrameOne Legs for Answer Beam  
(Closed Loop, Open Loop, Half Loop):  
24", 30"D  
Beam Cantilever  
Post Leg  
Tether Bracket  
Beam Intermediate Support; 1H, 1.5H



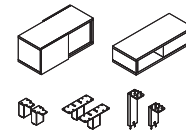
### LOW STORAGE

1H, 1.5H, 2H Universal Laminate  
Enhanced Laterals  
1.5H Universal Laminate Enhanced  
Credenzas  
1H Ology Integrated Universal Laminate  
Enhanced Lateral  
Universal Laminate Enhanced Mobile  
Pedestal  
High Density Storage: 42", 48"H



### MID STORAGE

Universal Laminate Enhanced  
Overheads: 15"D, 15"H, 36"-72"W  
Universal Laminate Enhanced  
Organizers: 15"D, 8 27/32"H, 36"-72"W  
Single-Sided Stanchion  
Double-Sided/Centered Stanchion  
Mid-Storage Support; 1.5H, 2H



**Steelcase®**

Call 800.333.9939 or visit [Steelcase.com](http://Steelcase.com)

[facebook.com/Steelcase](https://www.facebook.com/Steelcase) [twitter.com/Steelcase](https://twitter.com/Steelcase) [youtube.com/SteelcaseTV](https://www.youtube.com/SteelcaseTV)

Item 18-0005452 4/18 ©2018 Steelcase Inc. All rights reserved. All specifications subject to change without notice. Trademarks used herein are the property of Steelcase Inc. or of their respective owners. Printed in U.S.A. FSC certified.