



C8567

Amia
Seating

Steelcase



C8561 | AMIA CHAIR, KALIDRO DESK AND PARTITO SCREEN

MAXIMUM COMFORT.

Your choice of office seating is the most important ergonomic decision you'll ever make at work. That's why our goal at Steelcase is to provide healthier seating that will keep you comfortable and productive the whole day long. We call it High Performance Seating, because if you feel better you'll perform better.

Amia® is a chair that knows exactly what you need. Its extremely innovative active back mechanism automatically adapts itself to your body position to give you optimum comfort and full support throughout the working day. Whether you're busy at the computer, on the telephone or talking, Amia is a versatile seating solution that adds an element of sophistication to any workspace.

أميا - السر للراحة القصوى

إن قرارك بأختيار الكرسي المكتبي هو أكثر قرار يتطلب مراعاة لجانب المرونه والراحه في الأستخدام . لذلك فأن هدفنا في سنيلكيس هو تأمين خيارات صحيه للجلوس تبقي المستخدم في وضع جلوس مريح و منتج طوال فترة الأستخدام هذه الخيارات نطلق عليها خيارات الجلوس عالية الأداء لأننا على ثقه أنك عند جلوسك بشكل مريح فأن أدائك سيكون عاليا

أميا هو الكرسي المناسب الذي يلبي جميع أحتياجاتك , إن تصميمه الأبداعي لمسند الظهر المرن يستوعب أي وضعيه جلوس

للمستخدم بصورة آليه مؤمنا له الراحة التامه طوال فترة الأستخدام مهما أمتدت ساعات العمل

أن كرسي أميا بتصميمه المميز والجذاب سيعطي أيضا أضافة جماليه لمكان العمل توازي أدانه المريح



C8563 | AMIA CHAIRS, FRAMEONE BENCH AND PARTITO SCREEN



C8564

COMFORT NEVER LOOKED SO GOOD.

With Amia, you can enjoy a chair that looks great as well as feels great. Amia's LiveLumbar™ system supports the lower back area, making you less likely to sit in a hunched position. Amia is a hardworking task chair designed to handle long hours of serious sitting.

46%

of European workers suffer from back pain every single week.

Source: IPSOS for Steelcase International, 2007

AMIA'S LITTLE SECRET.

That nice flex you feel when you lean against the Amia chair's backrest is the LiveLumbar technology inside. Different than a typical lumbar "cushion", LiveLumbar is a system of flexors that move with your back for consistent, dynamic support. Two handles on the chair's backrest let you slide the LiveLumbar to the ideal position for you.

LiveLumbar height

slides up or down for custom support that flexes with your back.



LiveLumbar technology

contours to fit your spine for continuous lower back support as you move in your chair, through a system of flexors tucked neatly away inside its backrest.

You may not see it, but you'll certainly feel it. As you sit in the chair, an adjustable LiveLumbar zone flexes with your every move, for consistent ergonomic support for your lower back. Hour after hour, day after day.

Height, depth, width and pivot arms telescope in and out, move forward and back, pivot, and adjust up and down, so you can find a natural position that comfortably supports the wrists, forearms, shoulders and neck.

Back lock locks the backrest in an upright position and unlocks allowing for full-range motion.

Seat height raises and lowers the chair.

Back tension knob adjusts tension to your preference to help maintain your back's natural curve.



Flexible seat edge flexes to relieve pressure on the back of the legs when you recline or lean forward.

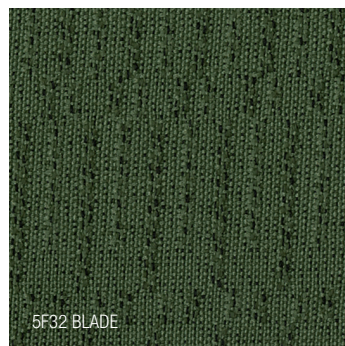
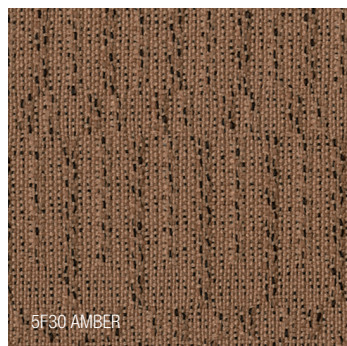
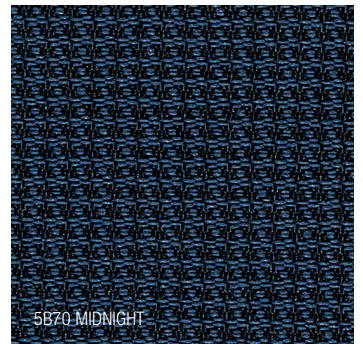
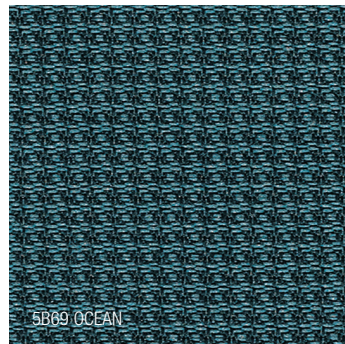
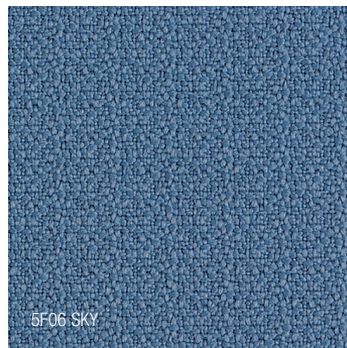
Adjustable seat depth accommodates different body shapes for long-term comfort.

With additional comfort features like four-way adjustable arms, adjustable seat depth and a flexible front seat edge, Amia keeps you feeling good 24/7. It's a chair for every day, that's not your everyday chair.

ATTRACTIVE DETAILS.

We've taken considerable care to select quality materials and provide elegant and stylish finishing, such as the textured look and feel on the seat back.

With attractive details like the upholstery finishing and textured back, Amia task chairs and Eastside visitor chairs offer a visual harmony that is complemented by all the support and comfort you need.





**TEXTURED LOOK AND FEEL
ON THE SEAT BACK**



**ADJUSTABLE DETAILS
TO MAXIMUM COMFORT**



**UPHOLSTERY FINISHING
AND TEXTURE BACK**



ELEGANT AND STYLISH FINISHING

EASY HANDLING.

The LiveLumbar flexible back support is located inside the lower backrest. To adjust, move the sliders on both sides of the backrest up or down to suit your own specific requirements.



C8523 - 1. AMIA CHAIR, FRAMEONE DESK AND EASTSIDE VISITOR CHAIRS



B9078

SEAT HEIGHT



B9102

SEAT DEPTH



B9084

**TILT TENSION CONTROL
WITH VELVET TOUCH**



B9115

ARMREST HEIGHT ADJUSTABLE



B9138

**ARMREST WIDTH, DEPTH, PIVOT
AND ANGLE**



B9095

BACK LOCK IN FORWARD POSITION

COMFORT AND ELEGANCE.

MANAGEMENT

To create a distinguished ambience, you need Amia Platinum task chair. Its stylish selection of finishes and its sleek, polished aluminium base, creates an elegant look all of its own.

IDEAL FOR TASKING ACTIVITIES

With its LiveLumbar support and precise ergonomic adjustments, Amia is perfect for task-intensive jobs which involve long periods of sitting, high levels of concentration and prolonged computer or telephone use. All day long you have the double benefit of comfort and support, leaving you free to focus on your work.

CONFERENCING

Both the Amia task chair and Eastside visitor chair are an excellent seating solution for presentations, video conferencing and everyday group collaboration.

90,7%

of users in a survey found Amia immediately comfortable.

Source: User test carried out on 60 people.



C7538 | AMIA CHAIRS AND P60 MEETING TABLE



C7542



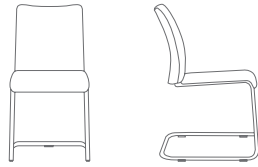
C7795

STATEMENT OF LINE

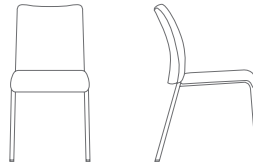
TASK CHAIR



VISITOR SLED



4 LEG WITH CASTORS



SURFACE MATERIALS

Below a selection of some of the finishes available within the Steelcase pallet for Amia Task

BUZZ 2

- 5F01 Camel
- 5F06 Sky
- 5F16 Grey
- 5F17 Black

JACKS

- 5B61 Taupe
- 5B64 Pewter
- 5B69 Ocean
- 5B70 Midnight

PLAYGROUND

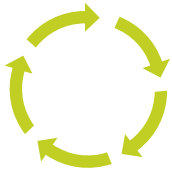
- 5F28 Claret
- 5F30 Amber
- 5F32 Blade
- 5F35 Navy

For Visitor Chair finishes, you need to refer directly to the Steelcase Pallet.

AMIA OPTIONS

- Stool version available
- Two finish colors are available: Black and Platinum
- Sewn cushion
- Upholstered outer back in leather and fabric
- Upholstered leather arm caps
- Polished aluminum base and casters
- Armless
- Height adjustable arms
- Height, depth, width and pivot adjustable arms

DESIGNING FOR THE ENVIRONMENT REQUIRES INNOVATIVE THINKING AND SOLUTIONS.



LIFE CYCLE ASSESSMENT

During our products development process we consider each stage of the life cycle: from materials extraction, production, transport, use and reuse, until the end of its life.

MATERIALS

23% recycled materials, by weight (7% pre-consumer + 16% post-consumer).

Materials chemistry assessment throughout their lifecycle.

30% recycled cardboard and 30% recycled LDPE film in packaging.

PRODUCTION

Made in Riyadh (Saudi Arabia) by Steelcase Jeraisy Ltd.

TRANSPORT

Made in Riyadh (Saudi Arabia), close to customers.

EcoSmart packaging to keep transport volumes as low as possible and improve filling rates.

USE

Designed for a long product life, with replaceable parts.

Limited substances harmful to health and indoor air quality.

Maintenance information available on Steelcase.com.

END OF LIFE

97% theoretically recyclable by weight.

100% theoretically recyclable cardboard and LDPE film for packaging.

Quick and easy disassembly.

Plastic parts clearly labeled for easy sorting and effective recycling.

Designed to ensure responsible end of use strategies - refurbishing, charitable donation or recycling.

CERTIFICATIONS

To show continuous improvements, we communicate our products' environmental performance through voluntary environmental labels and declarations. Sustainability related actions and results are communicated in the annual Steelcase Corporate Responsibility report.

PRODUCTS

 EPD Environmental Product Declaration


 NF Environnement

 Office Excellence Certifié

 Indoor Advantage Gold

 C2C

MATERIALS

 OekoTex 100 - Confidence in textiles

 European Eco-Label - For textiles

 C2C - For textiles

FIND OUT MORE

Visit steelcase.com to discover more about Steelcase's unique ecodesign strategy.

Love how you work.®



Visit steelcase.com.sa

Made in Saudi Arabia - Manufactured by Steelcase Jeraisy Ltd.

 facebook.com

 twitter.com

 youtube.com/steelcasetv

Concept & Design / Steelcase

DS150ENAS 11/12 © Steelcase® 2012 All rights reserved. All specifications subject to change without notice.