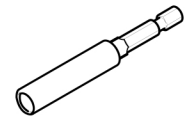


R2



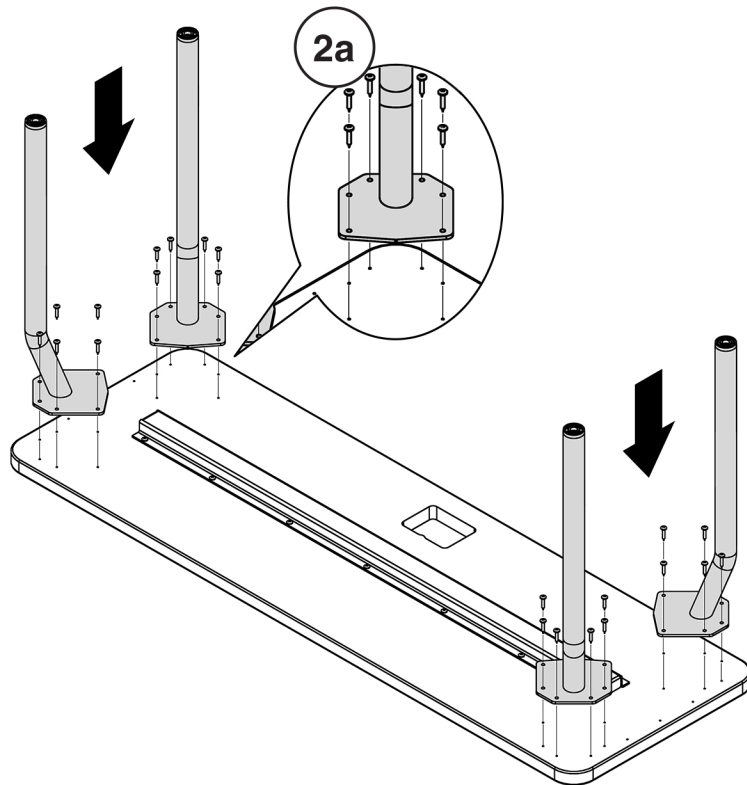
If you have a problem, question, or request, call your local dealer, or Steelcase Line 1 at **888.STEELCASE** (888.783.3522) for immediate action by people who want to help you. (Outside the U.S.A., Canada, Mexico, Puerto Rico, and the U.S. Virgin Islands, call: 1.616.247.2500) Or visit our website: www.steelcase.com

© 2023 Steelcase Inc.
Grand Rapids, MI 49501
U.S.A.

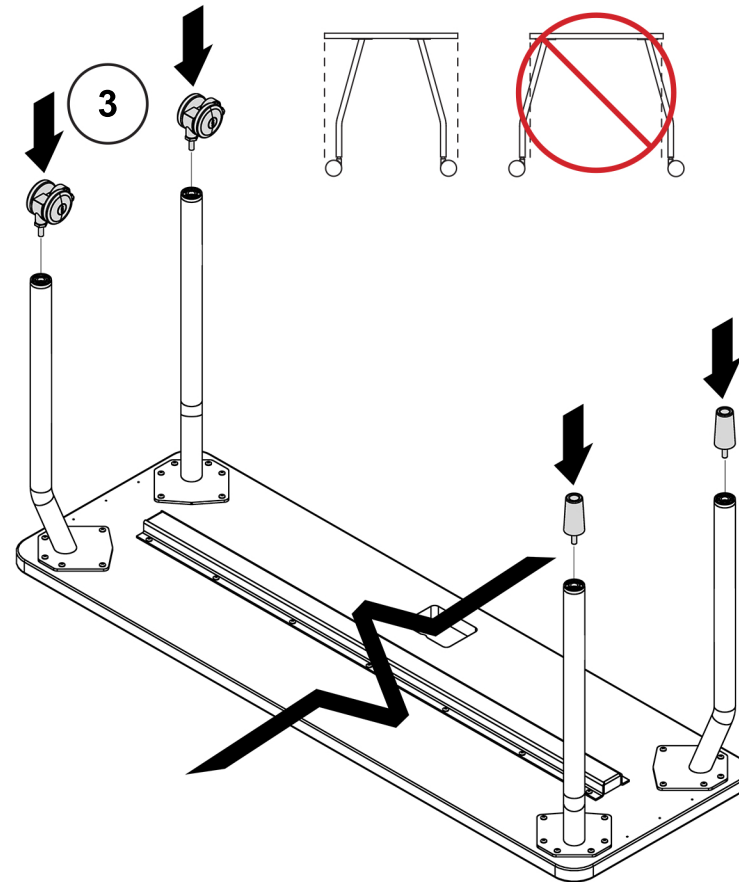
Printed in U.S.A.

Attaching Agree Legs to a Rectangle Worksurface

1. Place worksurface upside down on a clean, scratch resistant surface, such as on a table.
2. Align the leg top plate hole pattern with the pilots holes as shown. **Install #10 x 1" wood screws into all six (6) holes per leg top plate (2a).**
3. Insert the metal stem of the casters or glides into the caster socket holes in the legs as shown.

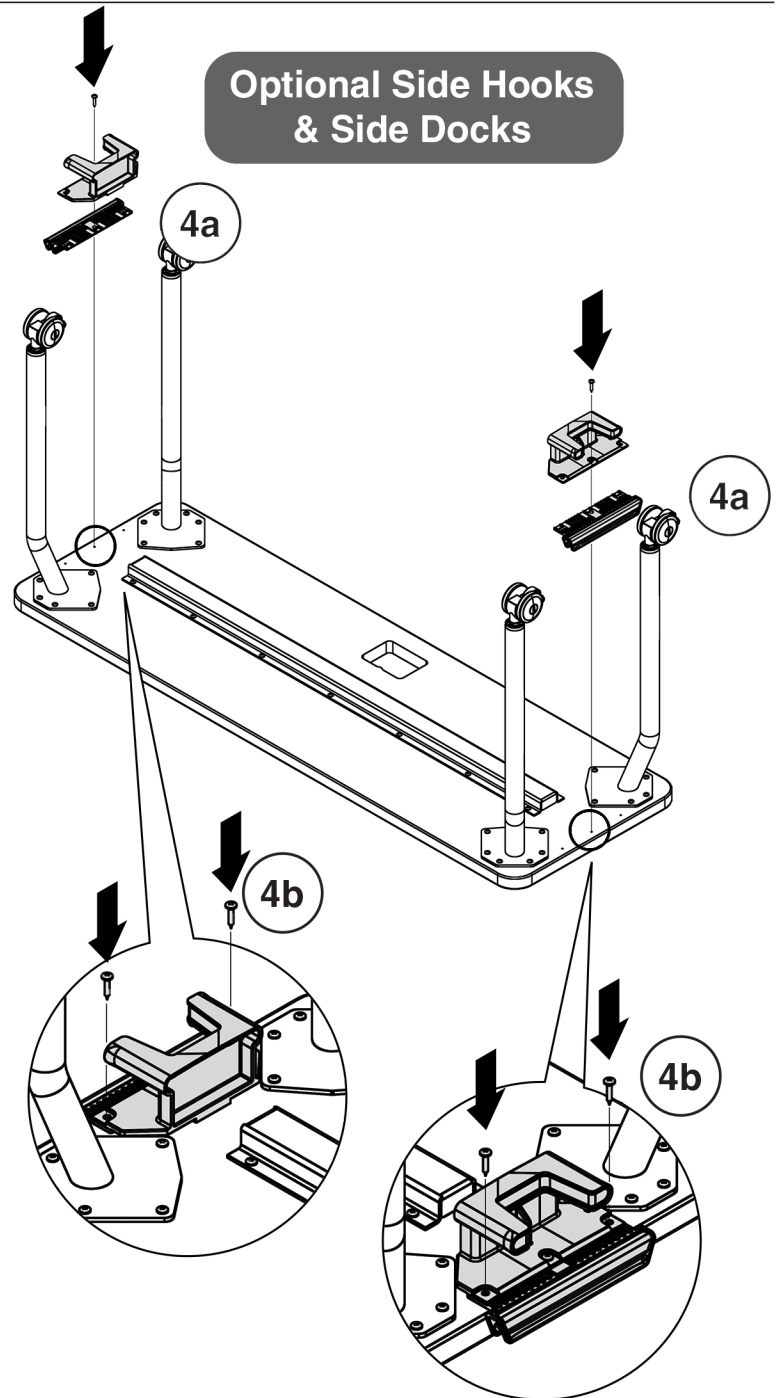
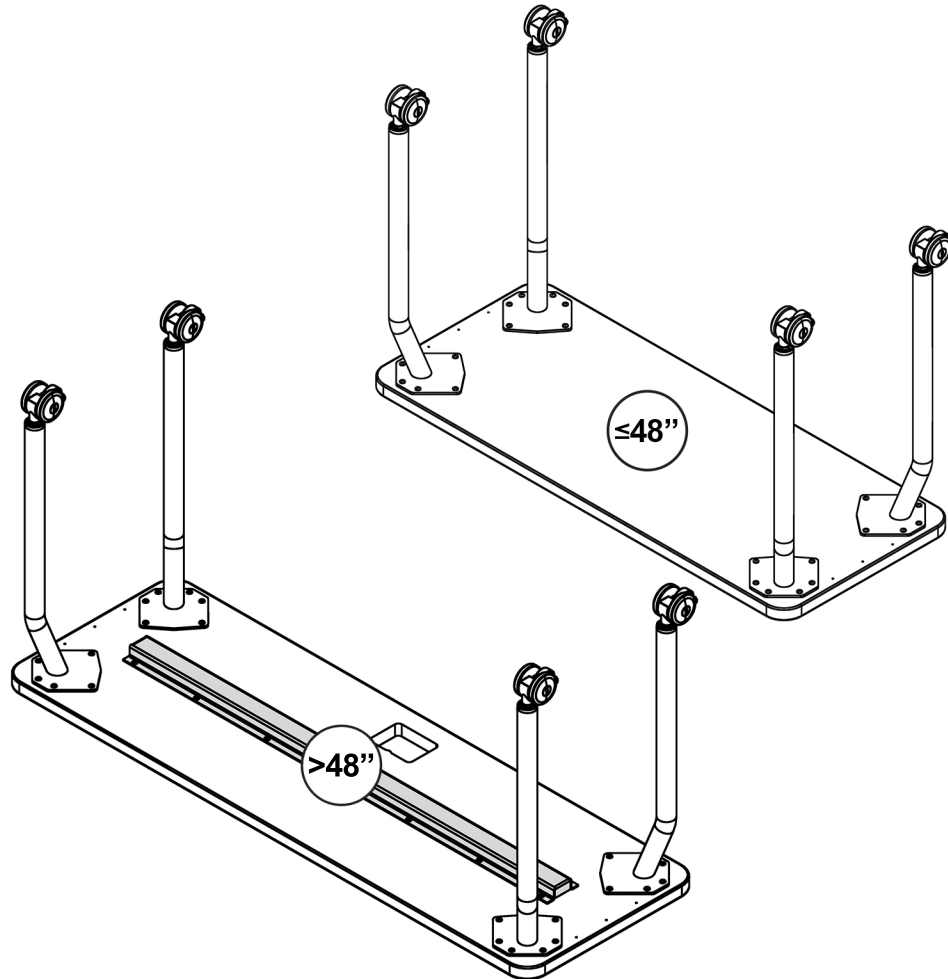


A properly installed leg will have a caster or glide that does not extend past the edge of the worksurface.



NOTE: All tops >48" in length will come with a brace installed on the underside of the worksurface.

4. Align the middle hole on the side hook and side dock with the pilot hole as shown. Install #10 x 1" wood screws into the pilot hole locations (4a).
Install two (2) wood screws in the remaining hole locations on the side hook and side dock (4b).



Optional Center Dock

5. Use two (2) or more people (depending on the size and weight) to lift table and place upright.

6. Squeeze snap features together (6a) and insert the center dock into the hole in the worksurface (6b).

