

SW_1 COLLECTION

Scott Wilson & MINIMAL, USA

*Scott Wilson
1995*



coalesse®

Liberating.

The freedom of work and the needs of knowledge workers have changed radically. SW_1 is a solution for the new realities of workplace collaboration.



SW_1 is a unique range on the market place offering a complete and combined collection of lounge, chairs and tables.

While SW_1 is offered in three conference, collaborative and occasional heights, its stunning collaborative application is the signature look and feel.

Lounge and chairs offer an exclusive 3D knit mesh back that breathes. The swivel base promotes conversational flow. Open arms expand the view. And the automatic return to-center swivel, always maintains the intended look of the room.

“Designing something “new” is really no different than anything else. In fact, I’s sometimes easier”.

— *Scott Wilson*







Rethink the meeting room.

Lower and more intimate.
Wider and more comfortable.
Lounge-inspired yet task-oriented. The backs breathe. The bases swivel. The tablets come to you. A whole new system of collaborative possibilities.



Seven centimeters lower than conventional seating and tables, the SW_1 collaborative offering is a conference/lounge hybrid that creates a more intimate and comfortable environment allowing an easier conversational flow.

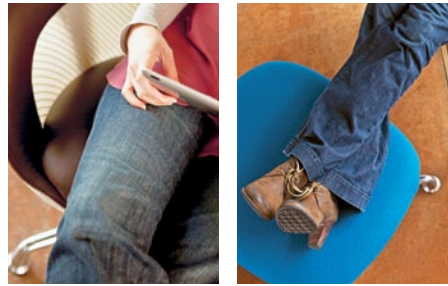
New smart options are created with a few simple shifts. The sliding tablet allows you to bring your work closer: you never lose back support.

Grommet and cable management host your technology smartly. And add a PowerPod to electrify.



Touch down.

Pairing the SW_1 Lounge with a tablet arm and ottoman invites mobile workers to put their feet up and work in a focused place and relaxed posture. The Conference Chair provides long-term comfort at standard height.







Flexible.

SW_1 moves effortlessly from the conference room to public spaces and training rooms for a wide range of collaborative options.



———— SW_1 Occasional Tables are designed to accompany the SW_1 Lounge but also stand beautifully on their own. It works perfectly well in lobby, enclaves, small meeting areas or lounge spaces.

———— Enhance the SW_1 Lounge Chair by adding a tablet arm to create a work surface to host mobile devices for training settings, meetings or focused work.



Conference Height (730mm) Solutions



Tabletops

14mm inch-thick tops available in glass, veneer, or laminate.

Substructure

Substructure available in Milk or Black.

Table glide adjusts 19mm for leveling on uneven floors



Conference Chair

Height-adjustable conference chair provides the SW_1 seating aesthetic for conventional conference-height tables.

3D knit mesh provides back support.

Collaborative Height (660mm) Solutions



Lounge chair

Chair glides are aluminum with non-marring inserts.



Tablet

The pull-out tablet allows you to bring your work to you. Available as an option on 660mm high tables only, in Milk or Black.

Table

Collaborative height (660mm H) is a clear alternative to conventional conferencing. Provides a lower, more informal setting.

Wire management

Grommet with wire manager allows wires to be accessed at the tabletop while routing them down the outside of the leg to the floor. Available in Milk or Black.

Table base

Table base comes in V-base with or without in-line legs for rectangular and super elliptical tops. Base is 4-star for round and square tops.

Product Features

Seating

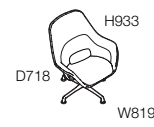
Two seating : Lounge and Conference chair.
Exclusive 3D knit mesh back.
Two tons version available.
Matte polished aluminum base.
Lounge is only available on a 4star base on glides.
Conference chair is available on 4star base on glides and 5 star base on casters.
Swivel return mechanism available.
Pillow as standard on Lounge.
Optional tablet arm on Lounge.
Height adjustment exclusively on Conference chair on 5 star base on casters.
Ottoman to complete Lounge applications.

Tables

Three heights: H730, H660 and H380.
Five top shapes: round, square, super square, rectangular and super elliptical.
Dimensions: from L762mm to L6100 mm.
Adjustable glides.
Optional grommet and wire manager, adapted to host PowerPod.
Sliding tablet exclusively available on Low Collaborative tables (H660).

Statement of Line

Mid Back Lounge



Seat:
W580 x D490 x H407

High Back Lounge



Seat:
W580 x D490 x H407

Lounge with Tablet



Seat:
W580 x D490 x H407

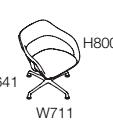
Tablet:
W380 x D300 x H640

Ottoman



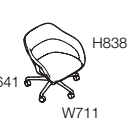
Seat:
W580 x D510 x H360

Conference (Glides)



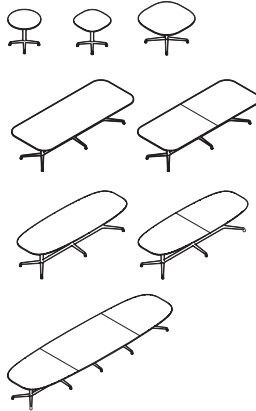
Seat:
W520 x D480 x H457

Conference (Casters)

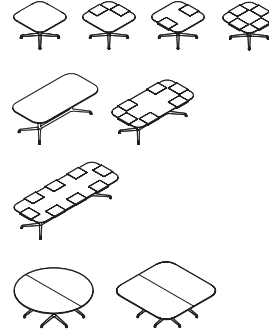


Seat:
W520 x D480 x H412/489

Conference Tables (H730)



Collaborative Tables (H660)



Occasional Tables (H380)

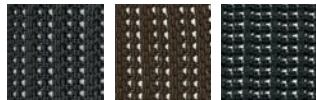


Surface Materials

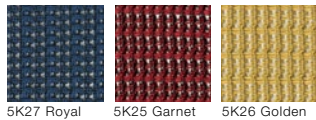
3D Knit Mesh



5K28 Ivory 5K20 Stone 5K21 Gray



5K29 Coal 5K23 Brown 5K24 Black



5K27 Royal 5K25 Garnet 5K26 Golden

Details



LOUNGE HIGH BACK



LOUNGE MID-BACK



ARM



3D KNIT MESH



SEATING BASE GLIDES



CASTER



TABLET ARM



PILLOW



GROMMET



CABLE MANAGEMENT



SLIDING TABLET



TABLE ADJUSTABLE GLIDES

