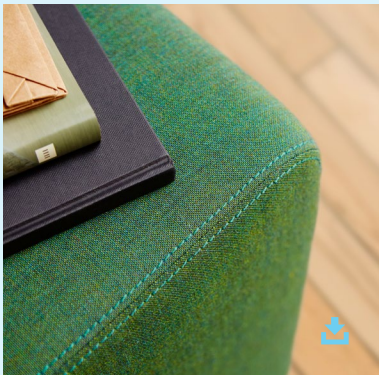


CREATIVITY IDEABOOK



Table of Contents



Understanding Creativity



“Creativity is the next competitive advantage.”

James Ludwig
VICE PRESIDENT
GLOBAL DESIGN AND PRODUCT ENGINEERING

25%
People think they can be creative in places available for group work.¹

70%
Leaders believe they are providing what employees need, yet meeting spaces commonly lack an ecosystem of tools for collaboration.³

61%
Leaders say they don't think their company is creative.²

77%
Employees believe creativity is the 21st-century job skill.¹

83%
People say they are asked to be creative at work either weekly or daily.¹

72%
Workers say their future success depends on their ability to be creative.¹



The Future of Work Is Creative

We are facing a time of unprecedented change. Some of the most rapidly growing jobs today didn't exist five or ten years ago. One-third of CEOs say they entered new industries in the past three years, and over half believe competition is heating up in more new sectors.⁴

We've come to understand that creativity—the innate human ability to generate ideas, solve difficult problems and exploit new opportunities—is the fuel for innovation, now and in the years ahead. Many of today's most pressing business problems require creative thinking to solve them, and creativity is an essential ingredient for business growth.

People want to be more creative at work—they believe it makes them better employees and helps them feel more innovative and confident.² Leaders know creativity helps them compete, bringing higher revenue and greater market share to their organizations.²

¹ Steelcase Creativity and the Future of Work Survey, 2017

² Adobe State of Creative, 2016

³ Digital Transformation, Achieving Agility and Innovation Through Collaboration Technology—Microsoft-commissioned Forrester study, 2016

⁴ 18th Annual CEO Survey, PwC

FROM

TO

Hierarchy

*Structure +
decision making*

Network

*Collaboration +
problem solving*

Creativity requires collective efforts across an organization, elevating the importance of network over hierarchy. Organizations that traditionally flow work and decisions through hierarchy find it difficult to capitalize on the full potential of creativity as a key capability.

Creative Role

*Assigned to
specific people
or teams*

Creative Capability

*An organizational
capability for all*

Employees and organizations often view creativity as a talent some individuals have or a role to be assigned to a handful of teams. Today's complex problems require that everyone in the organization develop a creative mindset.

Technology as Status

An earned luxury

Technology as a Tool

*An essential
tool for all*

Speed of change, complexity of problems, networked and distributed collaboration, rapidly evolving technology—all these factors require organizations to shift from investing in technology as a perk for leaders to recognizing it as an essential tool for all employees.

Rules-Based Culture

*Top-down
management*

Culture of Empowerment

*Matrixed network
+ leadership*

The marketplace, employee demographics and problems companies are facing are all rapidly changing and demand that the workplace do the same to unleash the creative capabilities inherent in workers and work today. To support this demand, organizations need to let go of the rules-based culture of the past and focus on providing a culture of empowerment.

Shift to Creative Culture

When creativity is supported, it becomes a habit. The result can be strong business growth that results from people who discover a deepening sense of purpose and personal fulfillment as they work creatively to help their organizations succeed.

Fostering creative behaviors in an organization requires making decisions to resolve tensions that may exist in the culture. The physical environment can help reinforce the shift toward a more creative culture.



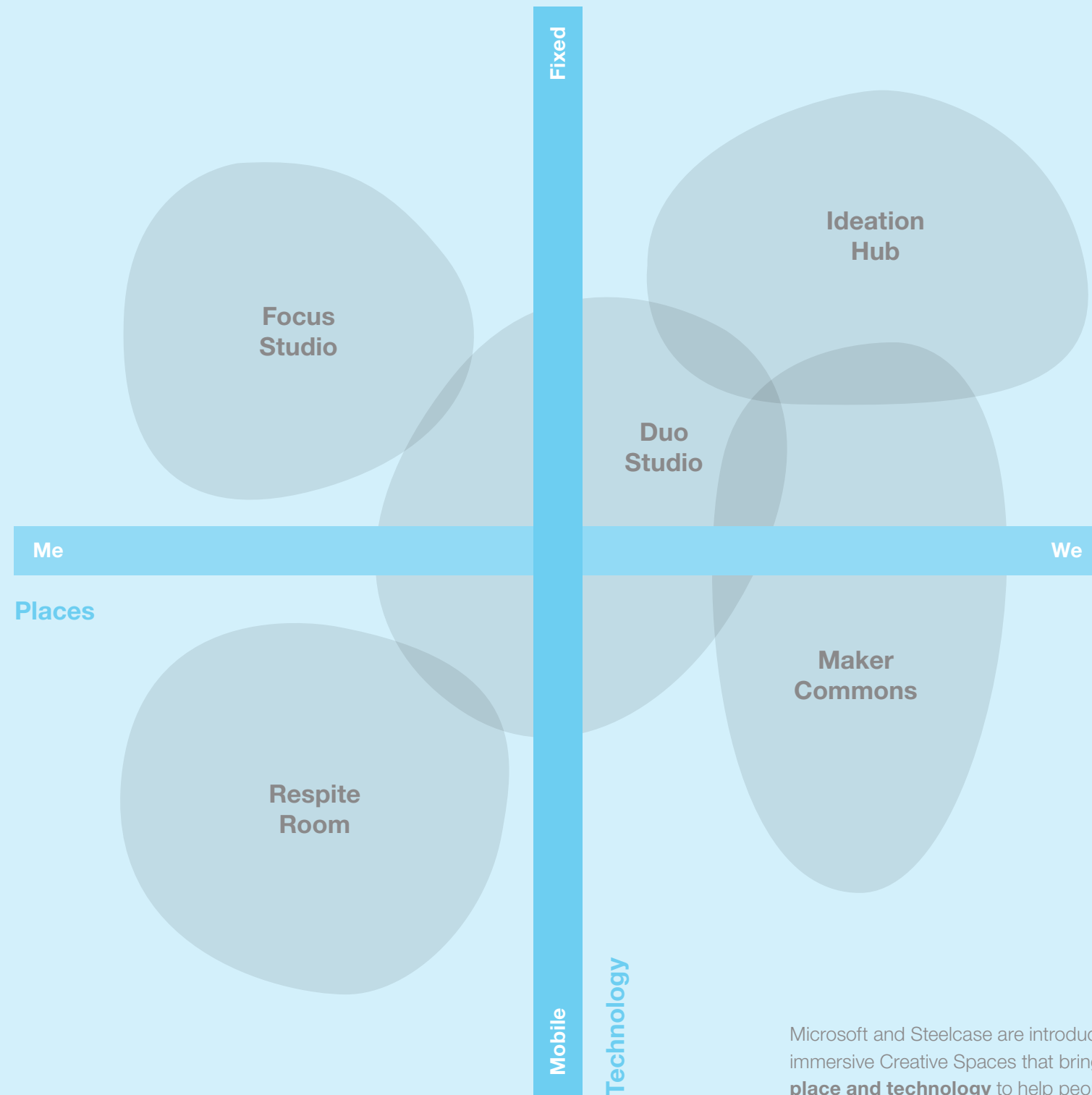
Place Drives Creative Performance

Creativity Is an Iterative Process

Work used to be driven by efficiency. The process was intentionally linear and divided into parts in which people could specialize. But, the problems we face today are much more complex. They require creative thinking and a very different work process in which people and ideas diverge, converge and iterate. The creative work process is fluid and often messy—embracing frequent dead ends and failures that become part of a learning cycle.

Connect Space with Tools and Technology

Supporting the creative process requires the purposeful integration of space, tools and technology. Spaces planned with a diverse set of tools, both digital and analog, enable the cycle between conversations, experimentation and concentration demanded by creativity.



Microsoft and Steelcase are introducing all-new, immersive Creative Spaces that bring together **place and technology** to help people generate new ideas and move them forward.

“I’m delighted that by working together and leveraging new insights, Steelcase and Microsoft can begin to help customers unleash creativity and enable a new level of productivity and competitiveness.”

Jim Keane
PRESIDENT AND CEO

Steelcase + Microsoft

Until now, space and technology in the workplace was often planned separately by different teams at different times of the project. This often led to incomplete or missed opportunities for the user experience.

Steelcase and Microsoft partnered to develop Creative Spaces, an immersive ecosystem of proven solutions that allow seamless integration of furniture, architecture and technology.

Our intention is to continuously build on this collection of creative spaces as our products and technology devices evolve. We aim to deliver the best work experiences to our joint customers.





Create Emotional Connection

Ambient inspiration and thoughtful design elements inspire thinking and foster team culture, and providing for physical and emotional comfort through posture, proximity and meaningful design elements affirms the importance of individuals.



Nurture Creative Confidence

All employees should be empowered to tackle complex problems regardless of hierarchy or geography. Equal access to spaces, tools and technology encourages equal participation.



Build a Fluid Ecosystem

A variety of spaces support individuals and teams as they cycle through the creative process, hosting moments of individual exploration, cognitive resting, social connection, co-creation and evaluation.



Design Principles

Based on extensive prototyping of spaces, we identified three core design principles to support creativity behaviors and needs. These principles recognize that space and technology can best support creative work when they are designed as a holistic, integrated system.





Create Emotional Connection

Ambient inspiration and thoughtful design elements inspire thinking and foster team culture, and providing for physical and emotional comfort through posture, proximity and meaningful design elements affirms the importance of individuals.

- Use authentic and inspiring design elements, accessories and materiality to inspire and personalize
- Provide comfort with posture options and intentional proximity to other people and content sources
- Integrate technology that encourages visual exploration of and experimentation with solutions
- Match posture to the dominant work mode of the space



Nurture Creative Confidence

All employees should be empowered to tackle complex problems regardless of hierarchy or geography. Equal access to spaces, tools and technology encourages equal participation.

- Encourage equal contribution with accessible technology and tools that support co-creation
- Integrate new technologies that speed the visualization process and offer interactive ways to evaluate ideas together
- Provide postable, writable surfaces adjacent to technology to make ideas visible and guide the creative process
- Enable privacy and control over the environment to provide a “safe haven,” where new ideas can incubate



Build a Fluid Ecosystem

A variety of spaces support individuals and teams as they cycle through the creative process, hosting moments of individual exploration, cognitive resting, social connection, co-creation and evaluation.

- Leverage cloud-based technology to connect spaces, tools, individuals and teams as they move throughout the day or project
- Provide a variety of spaces and devices to support user choice and the different stages of creative work
- Scale the ecosystem with separate spaces for specific individual, team and organizational needs

Spatial Attributes

These spatial attributes help you deliver and execute on the design principles to build successful creative work environments.

Designing for Creativity



Maker Commons

Socializing ideas and rapid prototyping are essential parts of creativity. These spaces encourage quick switching between conversation, experimentation and concentration.



Ideation Hub

An Ideation Hub is a high-tech destination that encourages active participation and equal opportunity to contribute as people co-create, refine and share ideas with co-located or distributed teammates.



Duo Studio

Duo Studio is a shared space designed for paired co-creation, quick review and rapid iteration. Here users can work side by side in a place that is comfortable, private and free from distractions.



Respite Room

A Respite Room offers a place for the brain to rest, form new connections and access spontaneous thoughts.



Focus Studio

A Focus Studio provides space for the alone time required by creative work, enabling focus while also allowing quick shifts to two-person collaboration.

Creative Spaces: Settings

Five space typologies solve for the different stages of creative work.



Ideation Hub

An Ideation Hub is a high-tech destination that encourages active participation and equal opportunity to contribute as people co-create, refine and share ideas with co-located or distributed teammates. These settings support teams in generative collaboration sessions in enclosed and open environments. With a bias toward standing postures, these spaces promote fluid interaction between people, ideas, tools and technology.



ESSENTIAL ELEMENTS

- Ample circulation space is critical for comfortable proximity between team members and with the Surface Hub
- Standing height and light-scale furniture encourage fluid movement within the setting
- Boundary to manage acoustics and visual distractions
- Places to store personal belongings, meaningful artifacts or team resources
- Vertical surfaces such as whiteboards and the Surface Hub provide spaces for visual thinking

SIZE

- Medium (12-24 sqm) to large room (24+ sqm)

CAPACITY

- Hosts teams of 4-15 people

LEADING PRODUCTS

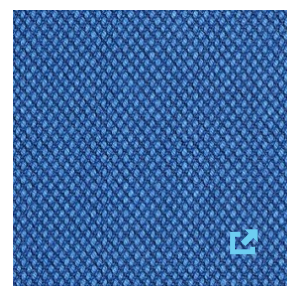
- Last Minute™ by Coalesse, QiVi™ Seating, and Cobi™ Seating, provide light-scale performance seating
- Potrero415 Table by Coalesse, media:scape™ Table, B-Free™, and ScapeSeries™ standing height tables to support interaction with the Microsoft Surface Hub



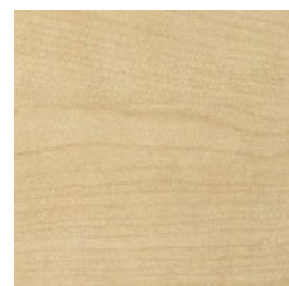
01

Ideation Hub

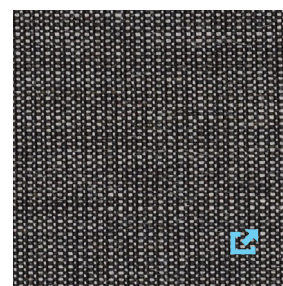
This high-performance meeting room encourages active participation with a range of postures and equal opportunity to access analog and digital tools, making the space work well for both meetings and presentations.



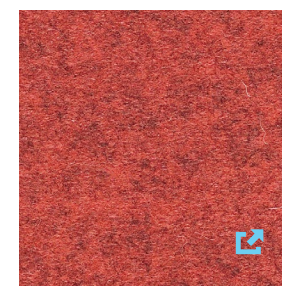
Kvadrat, Steelcut
Trio 3 - 746



EMEA Laminate,
Natural Maple



Kvadrat,
Canvas 2 - 154

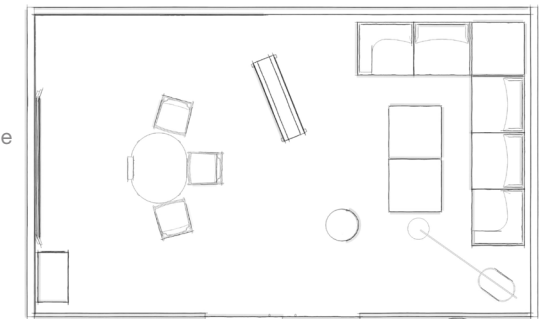


Kvadrat, Divina
Melange 2 - 531

01 Ideation Hub



- 01 Microsoft Surface Hub 84"
- 02 Moby S™
- 03 ScapeSeries™ Table
- 04 Montara650™ Seating by Coalesse
- 05 B-Free™ Beam
- 06 Sleek Low Back by Bolia
- 07 Bouy™
- 08 B-Free™ Table
- 09 B-Free™ Cube
- 10 RoomWizard™
- 11 media:scape™ Virtual Puck



LARGE - 7 X 4.3 m



Ample markerboards adjacent to the Surface Hub encourages fluid transitions between analog and digital iteration.

The standing height table encourages movement and allows easy access to the Surface Hub for immersive generative work.

A casual lounge area within the Ideation Hub provides people the choice between formal and informal collaboration.

[View Planning Idea](#)

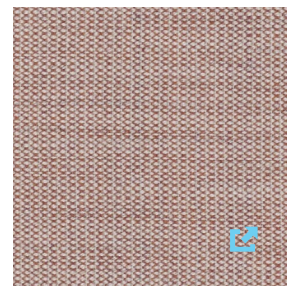




02

Ideation Hub

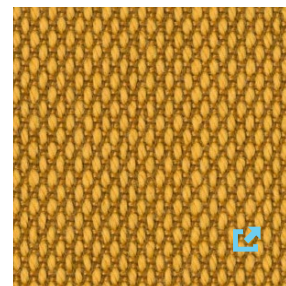
This large-scale space supports multiple stages of creative work and is divided into two zones: one for informative or evaluative collaboration and one for generative collaboration. People can easily switch between the two zones, depending on the type of work they're doing.



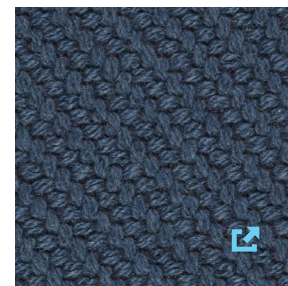
Kvadrat,
Canvas 2 - 614



EMEA Laminate,
Storm Wenge



Steelcase, Steelcut
Trio - Mustard Yellow

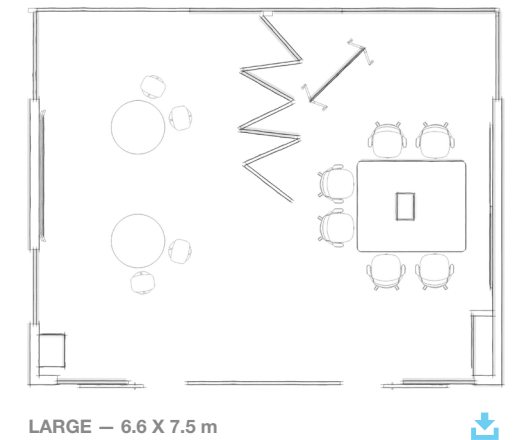


Kvadrat,
Coda 2 - 762

02 Ideation Hub



- 01 Microsoft Surface Hub 84"
- 02 Moby S™
- 03 TouchDown™
- 04 B-Free™ Sit Stand
- 05 Mobile Elements Pin Board
- 06 Cobi™ Seating
- 07 media:scape™ Table
- 08 Davos™
- 09 RoomWizard™
- 10 media:scape™ Virtual Puck



Integrated analog and digital surfaces make ideas visible, support rapid iteration and foster creative thinking.

Open space in front of the Surface Hub and markerboards allows equal opportunity to create and collaborate, nurturing engagement and physical wellbeing.

media:scape™ provides a place and technology to share and evaluate content while cycling through the creative process.

[View Planning Idea](#)





Duo Studio

Working in pairs is essential for creativity. Duo Studio is a shared space designed for paired co-creation, quick review and rapid iteration. Here users can work side by side in a place that is comfortable, private and free from distractions.



ESSENTIAL ELEMENTS

- Specifically designed for dyadic work (side-by-side and face-to-face)
- Large digital canvas for idea generation
- Variety of posture options encourage movement
- Areas for individual exploration and collaborative interactivity
- Boundary to manage privacy needs for a team of two and collaborators
- Places to store personal belongings and meaningful artifacts

SIZE

- Small (12 sqm) to medium room (12-24 sqm)

CAPACITY

- 2 people, can host up to 4

LEADING PRODUCTS

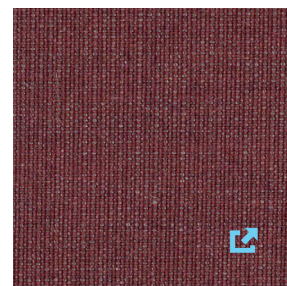
- Ology™ height adjustable desk and standing height Bivi™ desks to support wellbeing
- Umami™, Lagunitas™ by Coalesse, and B-Free™ for comfortable lounge furniture with design, performance and materiality



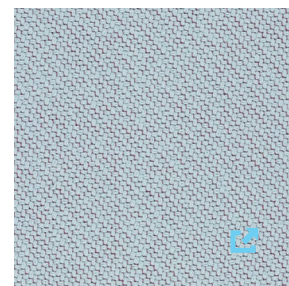
01

Duo Studio

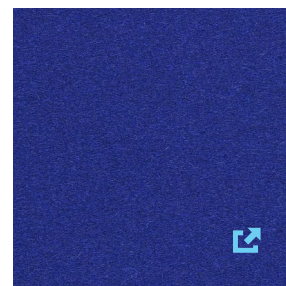
This space, which can be a dedicated team space or owned for the duration of a project, supports fluid transitions between side-by-side focus work and interactive group work.



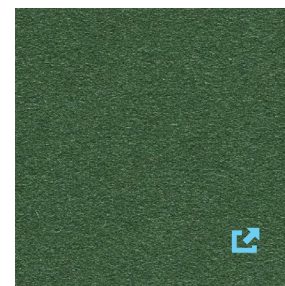
Kvadrat,
Canvas 2 - 654



Kvadrat,
Coda 2 - 722



Kvadrat,
Divina 3 - 791

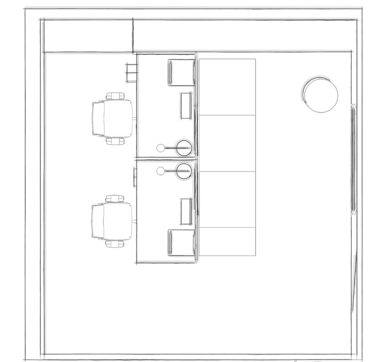


Kvadrat,
Divina 3 - 876

01 Duo Studio



- 01 Think™ Seating
- 02 Share It™
- 03 Ology™
- 04 SOTO™ Worktools
- 05 Divisio™ Framless Screen
- 06 Umami™ (coming soon)
- 07 Buoy™
- 08 Microsoft Surface Hub 55"
- 09 Gesture™ Seating
- 10 Volum Art™ Mobile Ped
- 11 FrameOne™ Adjust Platform
- 12 media:scape™ Virtual Puck



MEDIUM—4.3 X 4.3 m



Integrated chalkboard surfaces adjacent to the users for quickly acting on ideas.

The height adjustable desk promotes multiple postures, while mimicking the adjustability of the Surface Studio.

Lounge space creates a place to relax and reenergize during intense work sessions or to invite additional team members to collaborate.

[View Planning Idea](#)

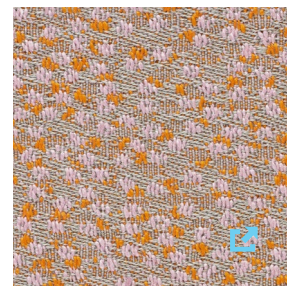




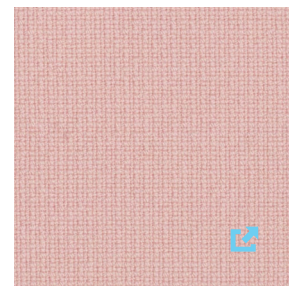
02

Duo Studio

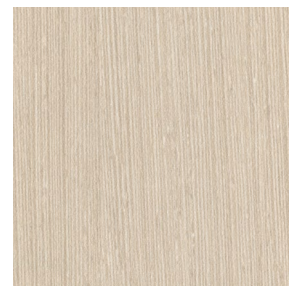
This active and private space allows pairs to work across from one another or collaborate on creative work. Teams can reserve this space for extended periods of time to support ongoing intensive project sprints.



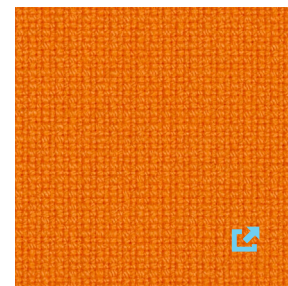
Kvadrat Raf Simons,
Ria - 551



Gabriel,
Fame - 64169



EMEA Laminate,
Bisque Wenge



Gabriel,
Fame - 63077

02 Duo Studio



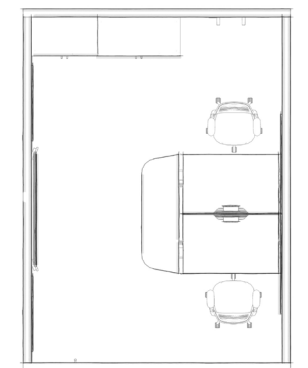
Additional magnetic and markerboard surfaces let users array content to make their work visible.

Storage organizes the project team's shared and archived resources.

Ample circulation supports quick switches from individual work at the desk to collaborative work on the Surface Hub.

Space at the end of the bench allows a guest to join and collaborate easily and equitably.

- 01 Umami™
- 02 RoomWizard™
- 03 Edge™
- 04 Microsoft Surface Hub 55"
- 05 Volumn Art™ Wood Leg
- 06 1+1™ Worktools
- 07 Bivi™ Table by Turnstone
- 08 Steelcase Series™ 1 Seating (coming soon)
- 09 media:scape™ Virtual Puck



MEDIUM—4.3 X 3 m



[View Planning Idea](#)



05



07



08



Maker Commons

Socializing ideas and rapid prototyping are essential parts of creativity. These spaces encourage quick switching between conversation, experimentation and concentration. People are naturally drawn to social spaces with appealing attributes such as comfortable seating, centrally located island-like places, inspiring architectural elements and rich materiality. In Maker Commons, the performance of the Microsoft Surface Hub enables creativity to flow from one interaction to the next.



ESSENTIAL ELEMENTS

- Desirable, comfortable and informal furniture enables authentic experiences and supports work needs with integrated power and collaboration tools
- Open, shared living-room-like space builds community and connections across teams and projects
- Centrally located with amenities such as collaboration tools or coffee creates a destination

SIZE

- Medium (12-24 sqm) to large room (24+ sqm)

CAPACITY

- 4-15 people

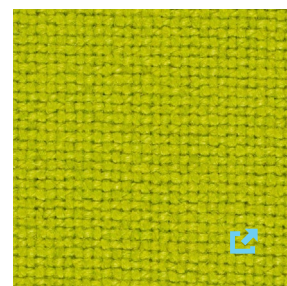
LEADING PRODUCTS

- Umami™, Lagunitas™ by Coalesse, and B-Free™ for comfortable lounge furniture with design, performance and materiality
- Potrero415 Table by Coalesse, media:scape™ Tables, B-Free™, and ScapeSeries™ standing height tables to support interaction with the Microsoft Surface Hub



01 Maker Commons

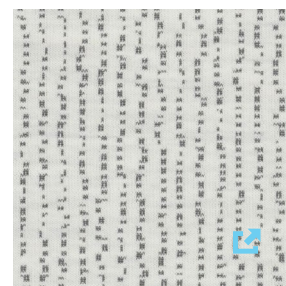
This community space fosters social interactions and active collaboration. The open, casual vibe encourages the sharing of ideas and facilitates conversations, prompting creative work both inside the space and after the meeting is over.



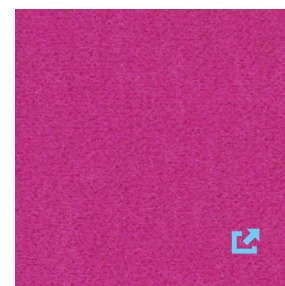
Kvadrat,
Hallingdal 65 - 907



EMEA Laminate,
Bisque Noce



Kvadrat,
Gravel - 149

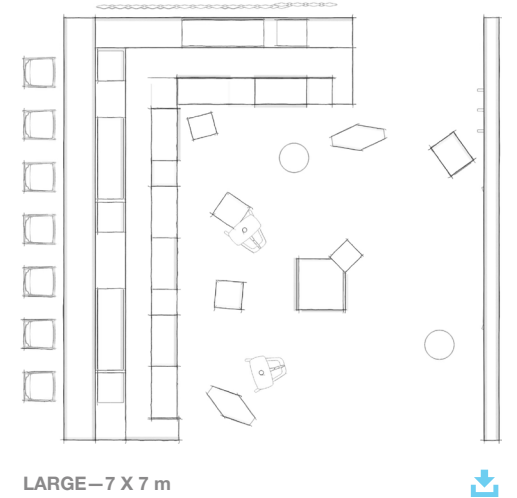


Kvadrat,
Haakon 2 - 632

01 Maker Commons



- 01 Montara650™ Seating by Coalesse
- 02 FlexBox™
- 03 media:scape™ Lounge Hex
- 04 Free Stand™
- 05 B-Free™ Cube
- 06 B-Free™ Table
- 07 Buoy™
- 08 Moby S™
- 09 Lagunitas™ Lounge by Coalesse
- 10 Lagunitas™ Table by Coalesse
- 11 Microsoft Surface Hub 84"
- 12 media:scape™ Virtual Puck



Storage integrated into the built-in seating provides people with a place for personal belongings or worktools.

Personal tables in the lounge setting to support electronic devices and individual work.

Boundary elements provide privacy and acoustical properties.

People can choose to sit, lounge, perch or engage with the Surface Hub.

[View Planning Idea](#)

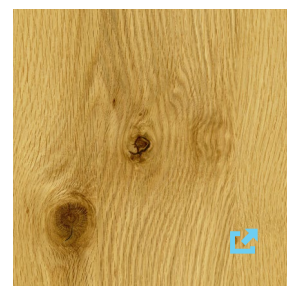




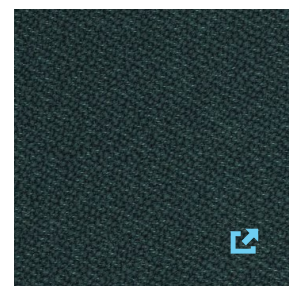
02

Maker Commons

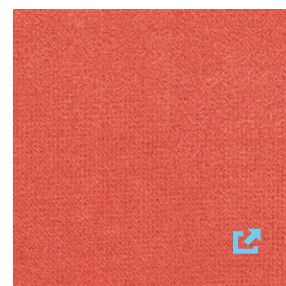
This space is designed to encourage connection with others, impromptu collaboration and continuity of creativity. A variety of settings that foster creative incubation including individual focus and respite, as well as a central gathering place that reinforces cross-disciplinary conversations.



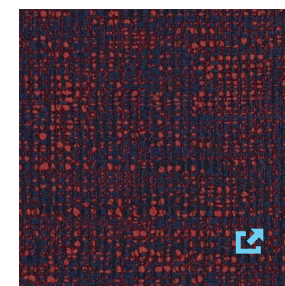
Steelcase Wood,
Planked Oak



Kvadrat Raf Simons,
Vidar 3 - 1062



Kvadrat,
Harold 3 - 543

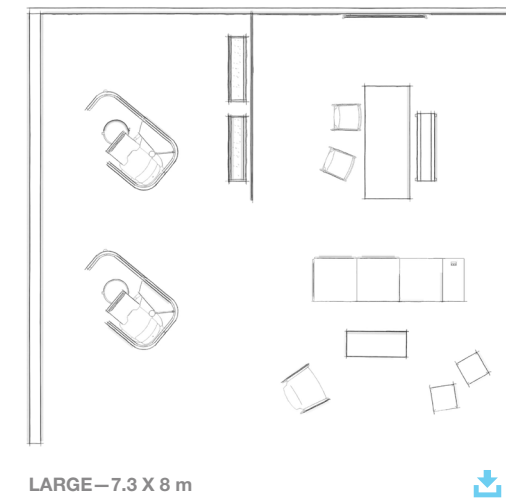


Kvadrat Raf Simons,
Sonar 2 - 673

02 Maker Commons



- 01 B-Free™ Cube
- 02 CG_1™ by Coalesse
- 03 Montara650™ Seating by Coalesse
- 04 Brody™ WorkLounge
- 05 Umami™ (coming soon)
- 06 B-Free™ Table
- 07 B-Free™ Beam (coming soon)
- 08 Microsoft Surface Hub 55"
- 09 media:scape™ Virtual Puck

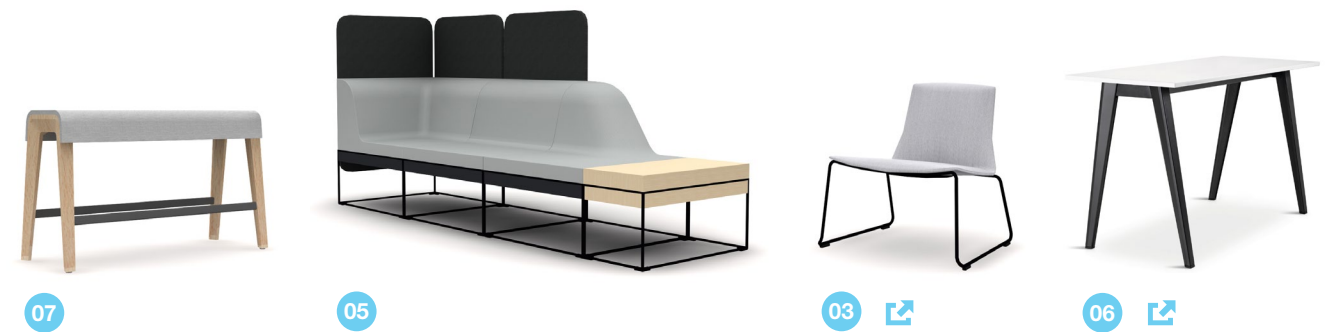


Brody™ WorkLounge provides a retreat for focus where individuals can step away while feeling immersed in the team's energy.

Flexible furniture encourages users to reconfigure, gather and work together.

A central gathering place welcomes and promotes impromptu interactions.

[View Planning Idea](#)





Focus Studio

A Focus Studio provides space for the alone time required for creative work, enabling focus while also allowing quick shifts to two-person collaboration. It's a place to let ideas incubate before sharing. These spaces can be owned or shared across the organization and boast a controlled environment to get into flow and focus free from distractions.

ESSENTIAL ELEMENTS

- Variety of postures support wellbeing and activate creative thinking
- Thoughtful objects and artifacts provide helpful cues for inspiration
- Boundary to manage acoustics and visual distractions
- Places to store personal belongings

SIZE

- Small room (up to 12 sqm)

CAPACITY

- 1 person (+ guest)

LEADING PRODUCTS

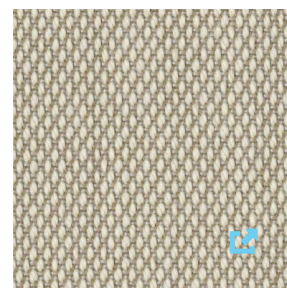
- Ology™ height adjustable desk to support wellbeing
- Brody™ WorkLounge to support the brain and body



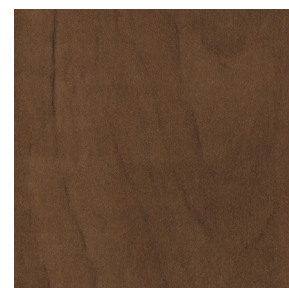
01

Focus Studio

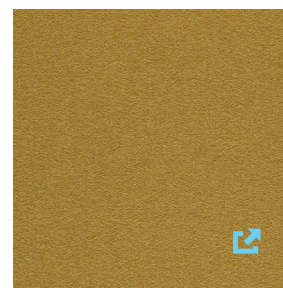
A space to focus and quickly get into flow. Here people can let their ideas incubate before sharing them with the group. The space is configured to manage privacy and reduce visual distraction.



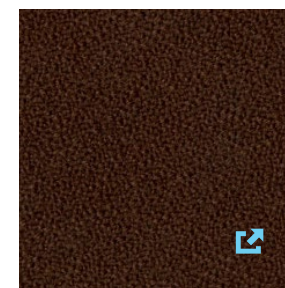
Steelcase, Steelcut
Trio - Cassonade Beige



EMEA Veneer,
Natural Cherry



Kvadrat,
Divina 3 - 346

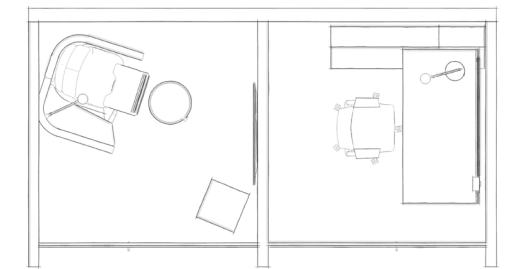


Steelcase,
Gaja - Umber

01 Focus Studio



- 01 Brody™ WorkLounge
- 02 B-Free™ Cube
- 03 Gesture™ Seating
- 04 SI-E
- 05 Ology™
- 06 Gaia 2 Seater Sofa by Bolia
- 07 CG_1™ Table
- 08 Montara650™ Lounge
- 09 Volumn Art™ Wood Leg



SMALL—2.3 X 2.3 m



The alert recline posture in Brody™ WorkLounge allows people to stay focused and provides the ergonomic support needed to be physically comfortable.

The B-Free™ Cube supports informal collaboration with a co-worker.

The height-adjustable table lifts quickly and effortlessly, allowing the user to switch from a sitting to standing posture, encouraging movement and boosting energy.



01



04 05



05

[View Planning Idea](#)

Respite Room

Creative work requires many brain states, including the need to balance active group work with solitude and individual think time. A Respite Room offers a place for the brain to rest, form new connections and access spontaneous thoughts. These spaces are designed to offer a relaxed posture within an environment that is private, protected and absent of stimuli.



ESSENTIAL ELEMENTS

- Shielded or fully enclosed to manage stimulation
- Lounge seating promotes relaxed, free-flowing ideas
- Artifacts or objects in the space create appeal and a level of personal comfort
- Places to store personal belongings and meaningful artifacts

SIZE

- Small room
(up to 12 sqm)

CAPACITY

- 1 person

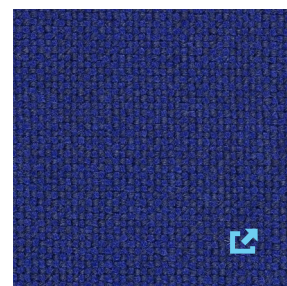
LEADING PRODUCTS

- Umami™, Lagunitas™ by Coalesse, and Massaud™ Lounge by Coalesse for comfortable lounge furniture with design, performance and materiality

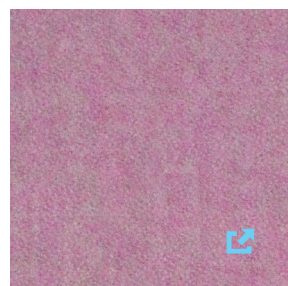


01 Respite Room

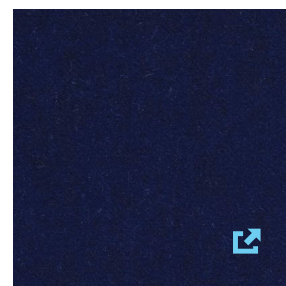
This space is designed to support the need for individual think time within the cycle of creativity. Lounge seating, privacy and an informal vibe create a space to clear the mind, think through tough problems and supplement the creative process.



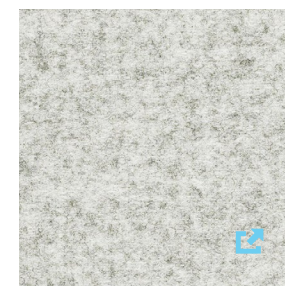
Kvadrat,
Hallingdal 65 - 773



Gabriel,
Luna 2 - 4411



Kvadrat,
Haakon 2 - 792



Kvadrat, Divina
Melange 2 - 120

01 Respite Room

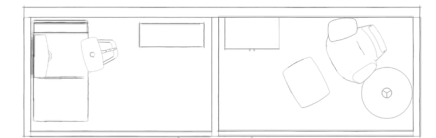


Enclosure provides privacy and acoustical properties.

Thoughtful objects and artifacts provide helpful cues for inspiration and relaxation.

Lounge seating offers the opportunity to change posture and influence brain modes.

- 01 Lagunitas™ Lounge by Coalesse
- 02 Free Stand™
- 03 Davos™ Bench
- 04 Volum Art™ Wood Leg
- 05 Massaud™ Work Lounge by Coalesse
- 06 Mix Coffee Table - Small by Bolia

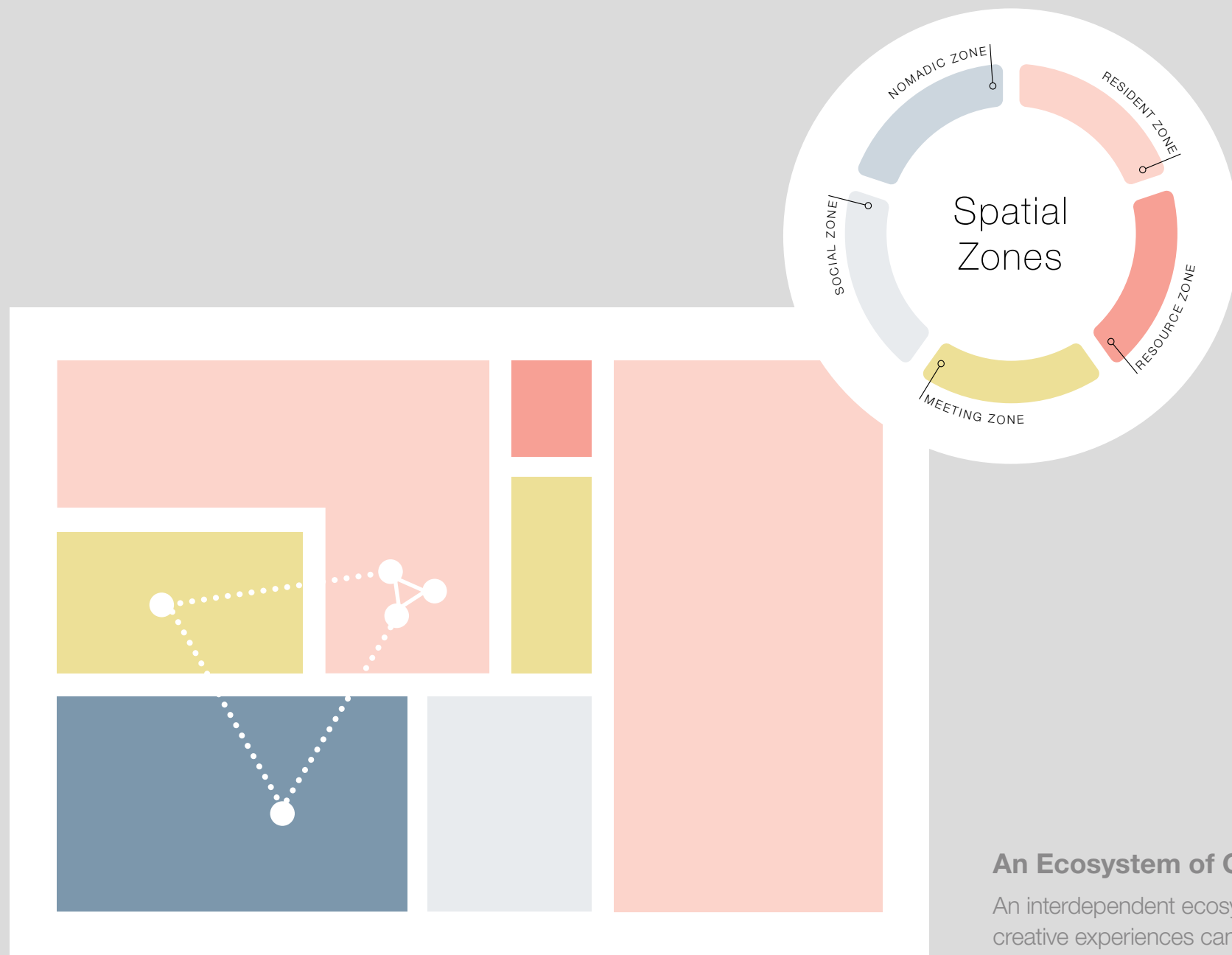


SMALL—2.8 X 1.7 m



[View Planning Idea](#)





An Ecosystem of Creative Spaces

An interdependent ecosystem that enables creative experiences can be designed at various scales: for an individual, a team or the entire organization. The five space types can be combined and arrayed across a space to meet the specific needs of the organization, as demonstrated to the left.

Creative Spaces: Ecosystem

The Resilient Workplace

A Resilient Workplace is the intentional combination of five spatial zones designed to adapt and evolve over time, optimizing real estate while fostering higher levels of employee engagement.

Creative Spaces are an interdependent ecosystem that can be designed and planned for within the zones of a Resilient Workplace. Intentionality and inclusion of Creative Spaces across zones will support and promote employees' participation in the creative process, driving new ideas and innovative solutions.





Creating an Ecosystem:

Private Office + Project Studios

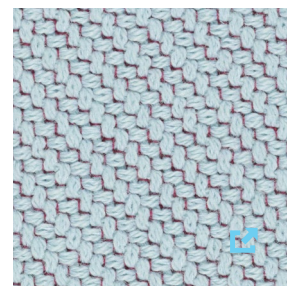
In addition to a combination of the five individual creative space types, another planning option is rethinking space within traditional private offices and project studios. Providing spaces for focus, collaboration and respite allow individuals and teams to fluidly shift between the work modes and cognitive states demanded by creativity.



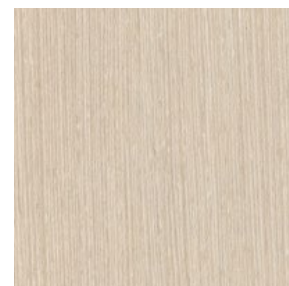
01

Private Office

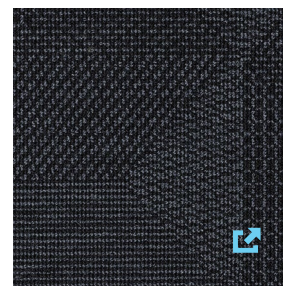
3 in 1: This space rethinks the traditional private office by creating distinct areas that support focus, collaboration and respite as individuals and teams cycle through creative work.



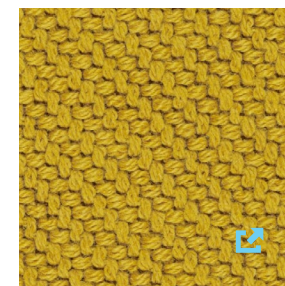
Kvadrat,
Coda 2 - 722



EMEA Laminate,
Bisque Wenge

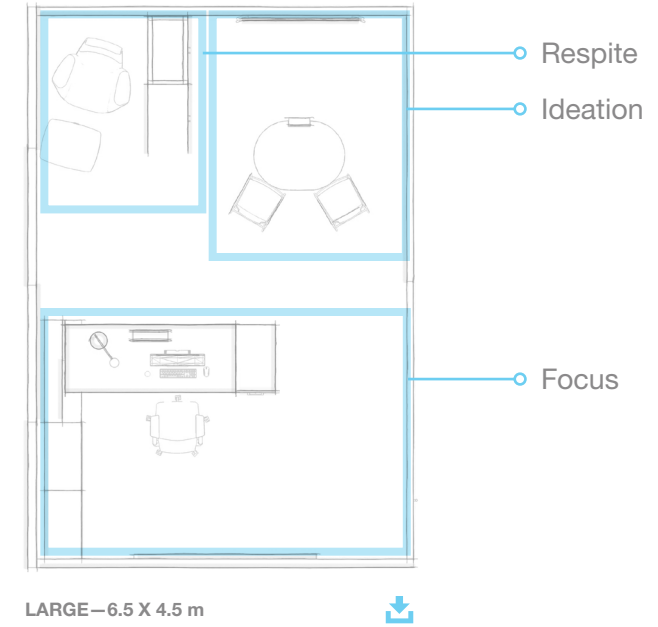


Kvadrat, Crystal
Field - 193



Kvadrat,
Coda 2 - 442

01 Private Office



LARGE—6.5 X 4.5 m

- 01 Gesture™ Seating
- 02 SI-E™
- 03 Ology™
- 04 High Density Storage
- 05 Massaud™ Work Lounge by Coalesse
- 06 Volum Art™ Wood Leg
- 07 Montara650™ Seating by Coalesse
- 08 ScapeSeries™ Table
- 09 Microsoft Surface Hub 55"
- 10 media:scape™ Virtual Puck

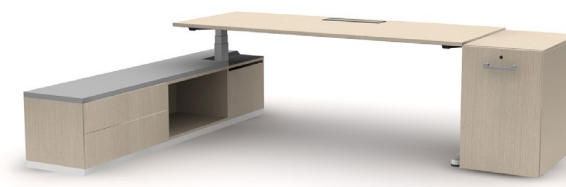
A height adjustable desk promotes wellbeing and individual choice and control.

Lounge seating offers the opportunity to change posture and mindset.

A collaborative setting located at the entry welcomes team members and guests.



05



02 03 04



07



08

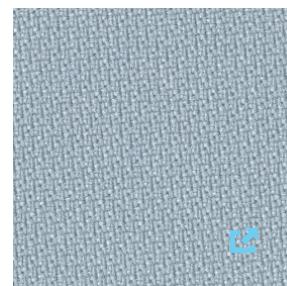
[View Planning Idea](#)



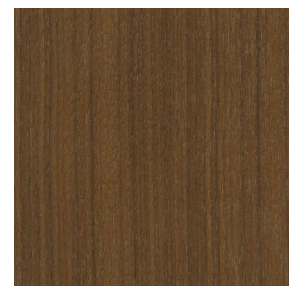
02

Project Studio

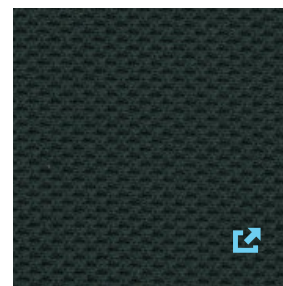
A dedicated project team space provides fluidity between focus, collaboration and respite as teams move between group sessions and individual heads-down work.



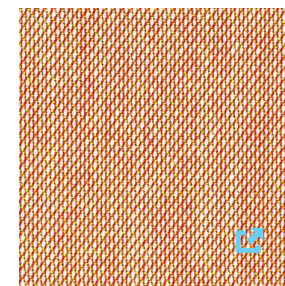
Gabriel, Step - Light Blue Green



EMEA Laminate, Natural Walnut

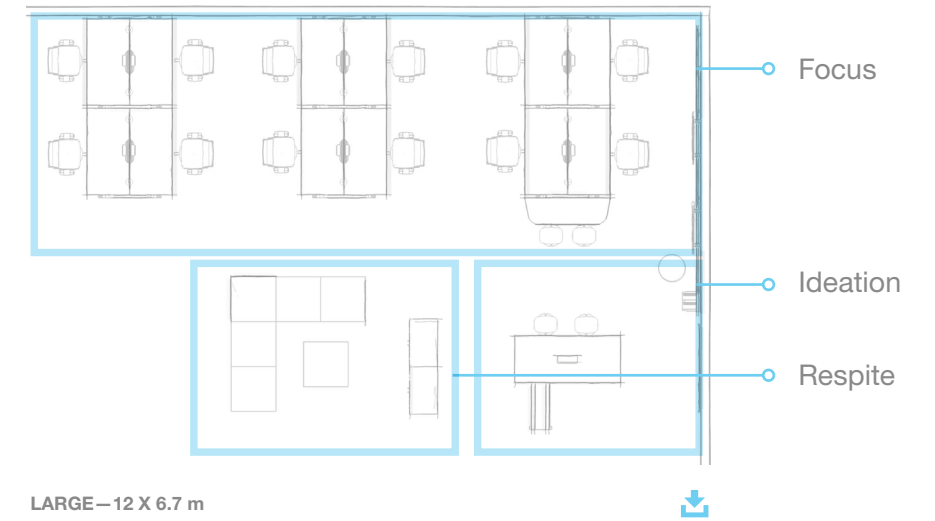


Steelcase, Cogent Connect - Lizard



Steelcase, Steelcut Trio - 515

02 Project Studio



LARGE - 12 X 6.7 m

- 01 Umami™ (coming soon)
- 02 Volum Art™ Wood Leg
- 03 B-Free™ Sit Stand
- 04 B-Free™ Table
- 05 B-Free™ Beam (coming soon)
- 06 Microsoft Surface Hub 55"
- 07 1+1 Worktools™
- 08 H. System™
- 09 1+1 Worktools™ Personal Console
- 10 Think™ Seating
- 11 Bivi™ by Turnstone
- 12 media:scape™ Virtual Puck

The standing height work space allows users to easily transition from collaboration to focus work.

Vertical surfaces for writing, drawing or posting support creative thinking and expression.

The Surface Hub makes it easy to share content and co-create with co-located and distributed team members.

[View Planning Idea](#)



08



11



01



02

Surface Hub Planning Tips

Designing Effective Surface Hub Work Settings

- Plan to live on video.

Two built-in, wide-angle, HD cameras offer effective collaboration whether teams are together or distributed. Consider appropriate acoustics, lighting and angles to offer collaborators a successful, comfortable video experience.

- Bias toward standing.

Surface Hub is an engaging device meant to be used standing up. Support easy shifts from perching to standing postures.

- Encourage comfort and movement.

Like creativity, the collaborative process is nonlinear. Design for ample circulation in front of the Surface Hub as collaborators move around and interact. A minimum distance of 48" is recommended between the Surface Hub and edge of table/surface.

- Design for digital and analog needs.

Surface Hub is a powerful digital-first multimedia tool, but it's important to continue supporting analog tools like whiteboards, sticky notes and magnets.

- Pair Virtual Puck with Surface Hub

media:scape Virtual Puck facilitates collaboration by enabling non-Microsoft devices to wirelessly share content with Surface Hub.

Learn more about planning with Microsoft products.

Surface Hub Technical Information

- Surface Hub with Microsoft Wall Mount

55" Hub = mount at 55" on center (elevation).

84" Hub = mount at 54" on center (elevation).

- Surface Hub Weight

55" Hub: 105 lbs.

84" Hub: 280 lbs.

Universal Design Strategies

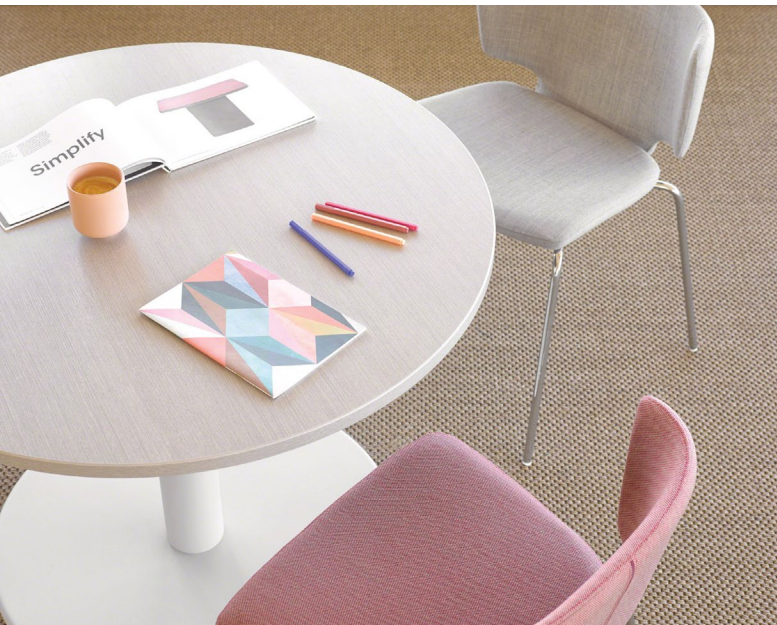
To support the diversity of abilities in the workplace, consider the following universal design strategies:

Create equal access and experiences to the greatest extent possible for all people with a variety of meetings spaces that each offer different table heights and seating styles.

Product recommendations:

- media:scape®, Potrero415 & Montara650™ by Coalesse and ScapeSeries™ tables in seated and standing heights for a choice in meeting spaces.
- Ology®, Migration® and Airtouch® height adjustable desks to support the wellbeing of all users.
- Lagunitas™ personal table by Coalesse and Campfire® Skate Table by Turnstone to support personal devices in lounge spaces increasing comfort and performance.
- B-Free™, Umami™, Lagunitas™ by Coalesse, Campfire® Big Lounge by Turnstone and Regard™ seating for lounge choices that vary in design, density, seat depth, comfort and performance.

Learn more on accessibility with the Surface Hub.



Fresh

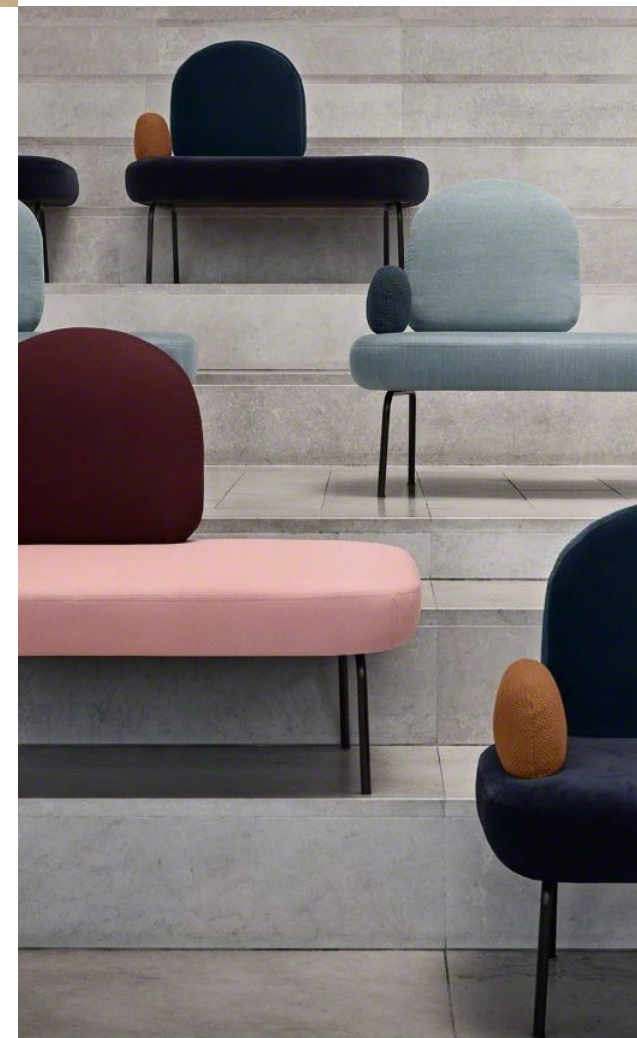


Natural

Mineral



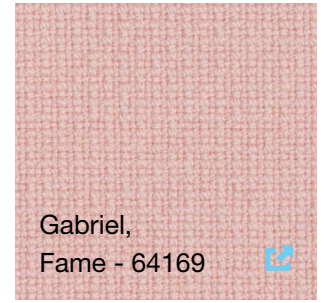
Bold



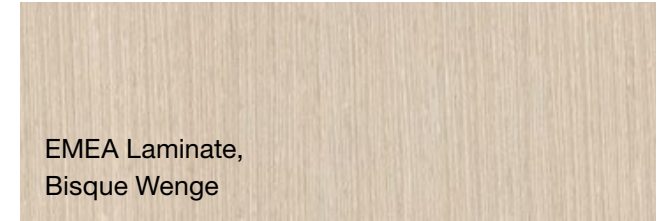
Color Palettes + Materiality



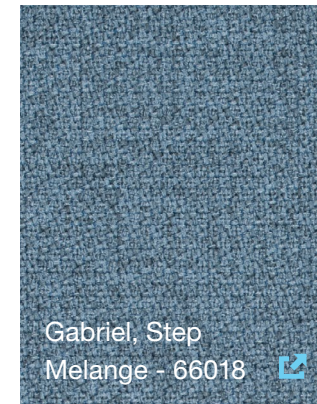
Kvadrat, Hallingdal
65 - 110



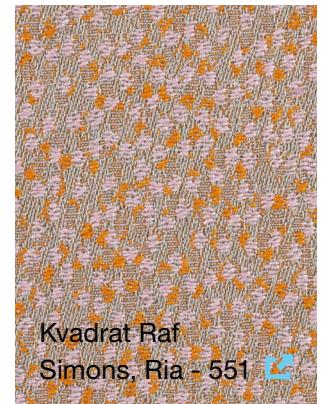
Gabriel,
Fame - 64169



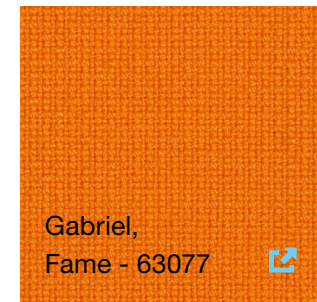
EMEA Laminate,
Bisque Wenge



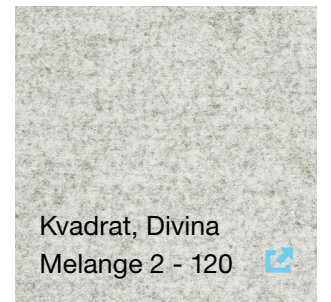
Gabriel, Step
Melange - 66018



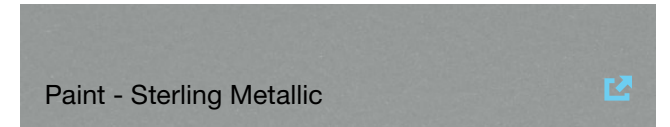
Kvadrat Raf
Simons, Ria - 551



Gabriel,
Fame - 63077



Kvadrat, Divina
Melange 2 - 120

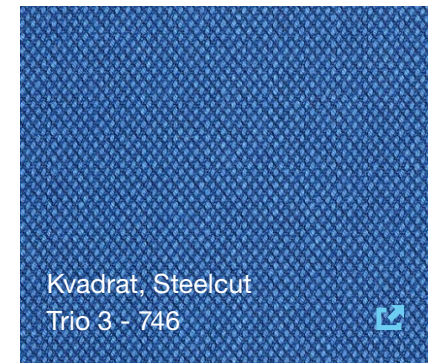
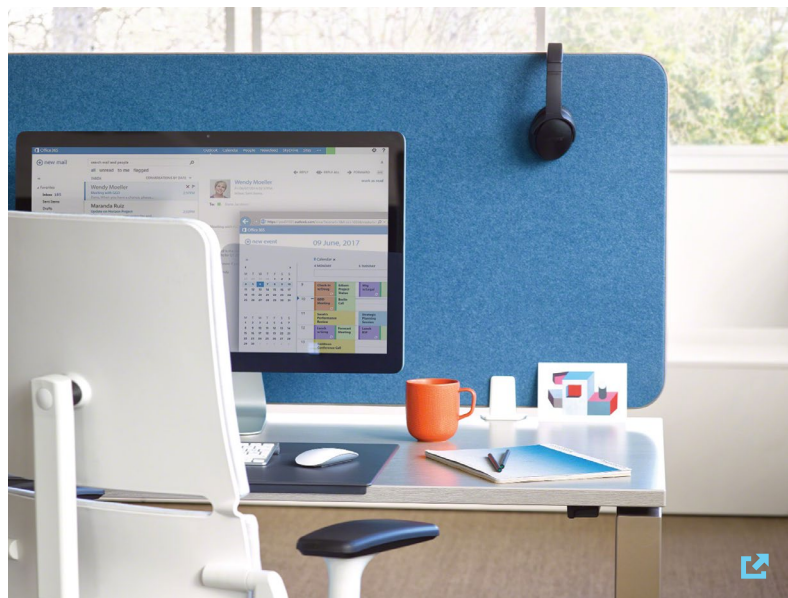
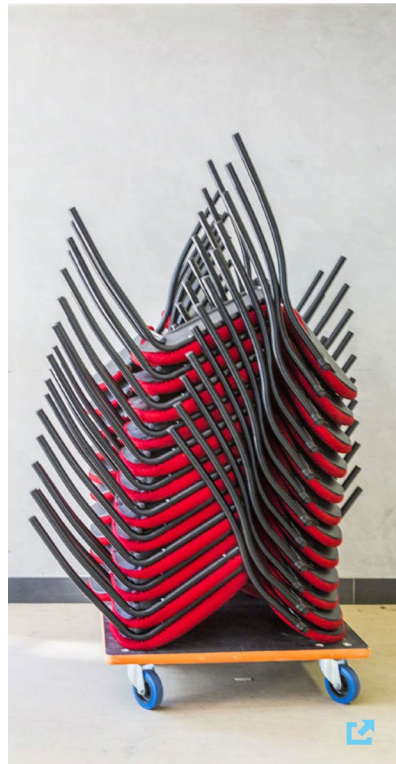
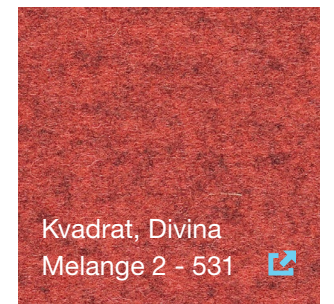
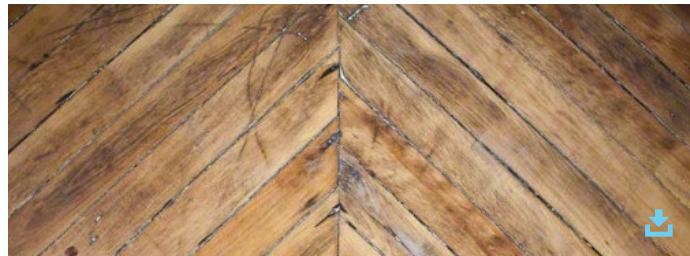
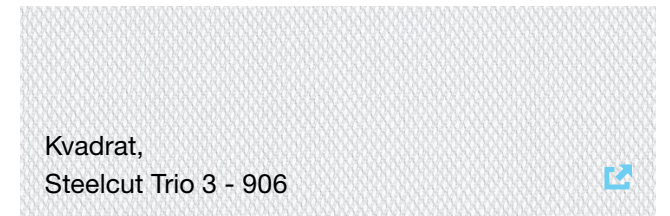
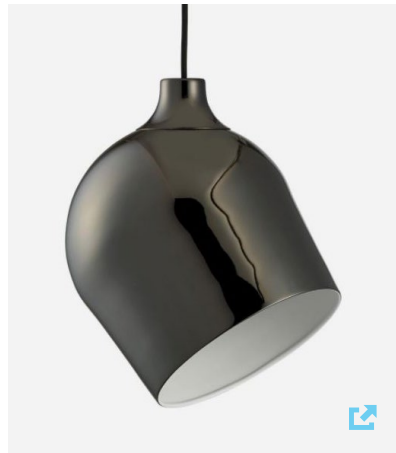
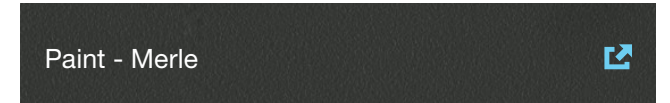
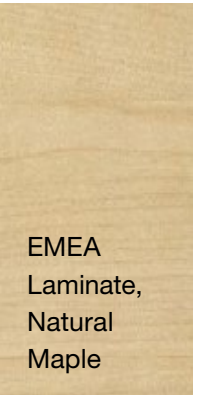
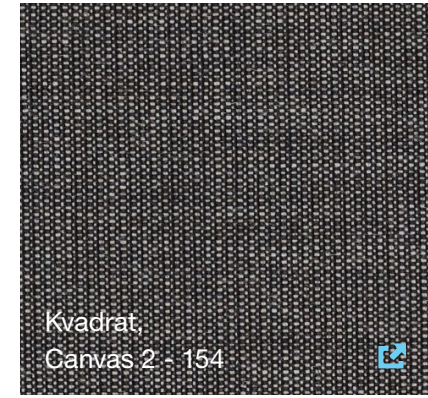


Paint - Sterling Metallic



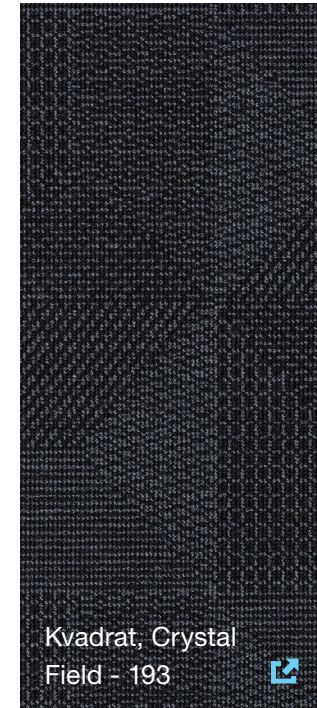
Fresh

Blonde woods, muted tones, blended with bright colors, and subtle textures juxtaposed against a white background evokes a clean, youthful aesthetic.

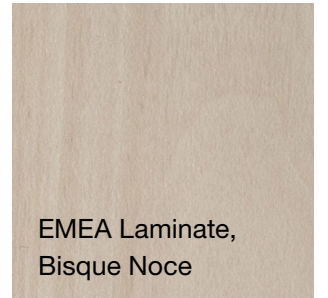


Bold

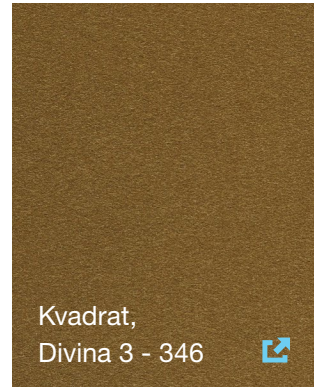
Bright, vivid colors pop on a dark industrial backdrop. This fun, funky play on color creates a lively environment to help stimulate the mind.



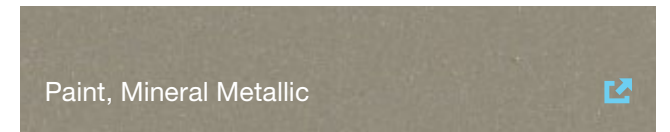
Kvadrat, Crystal Field - 193



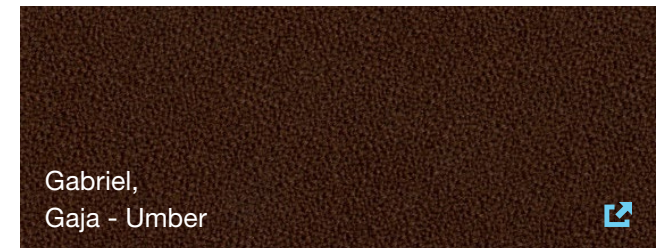
EMEA Laminate, Bisque Noce



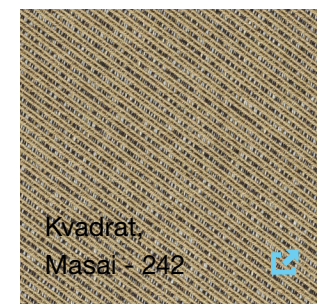
Kvadrat, Divina 3 - 346



Paint, Mineral Metallic



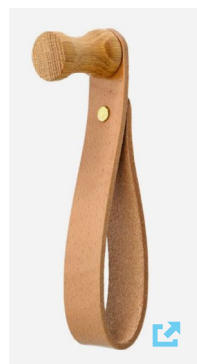
Gabriel, Gaja - Umber



Kvadrat, Masai - 242

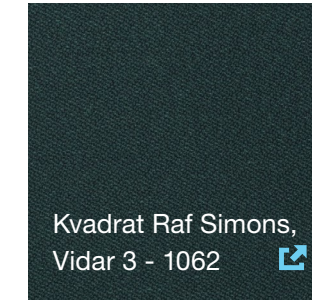
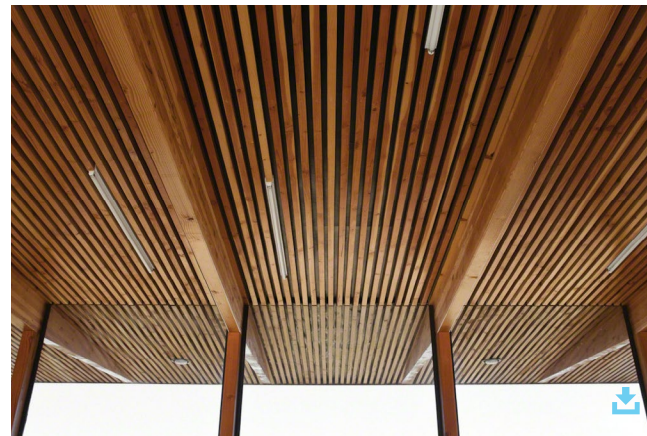
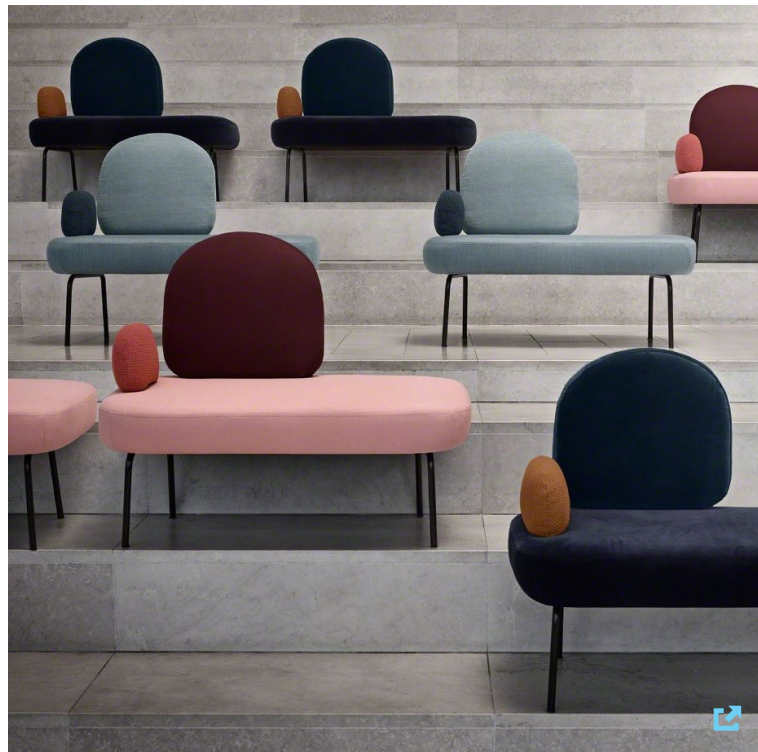


Kvadrat, Coda 2 - 100

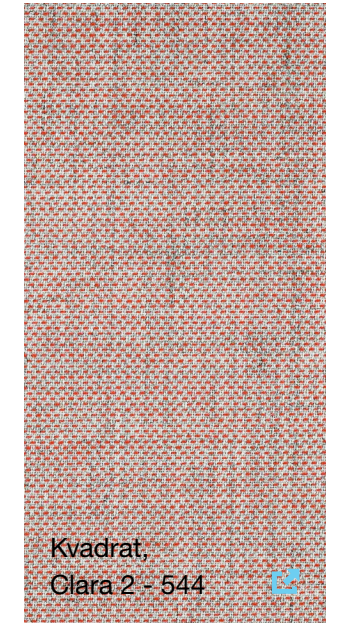


Natural

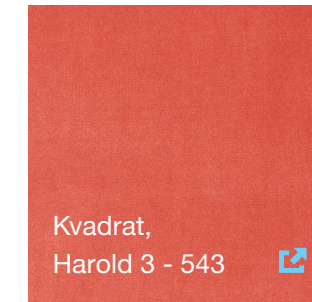
Earthy tones combined with natural woods and leather bring the essence of the outdoors into the office.



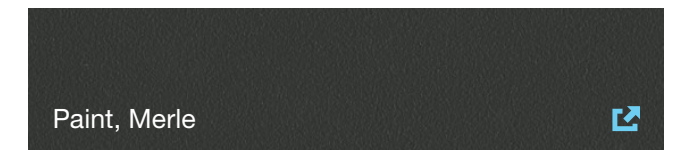
Kvadrat Raf Simons,
Vidar 3 - 1062



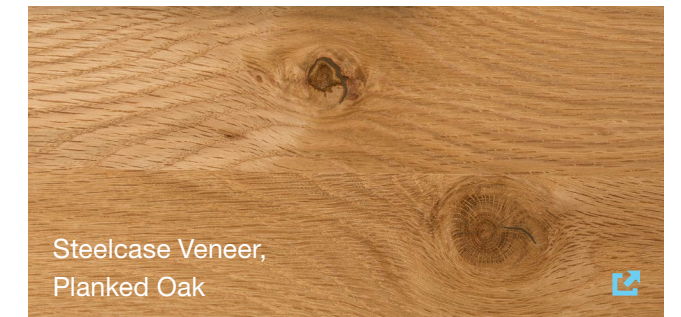
Kvadrat,
Clara 2 - 544



Kvadrat,
Harold 3 - 543



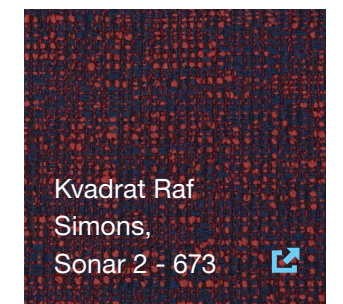
Paint, Merle



Steelcase Veneer,
Planked Oak



Kvadrat, Steelcut
Trio 3 - 105



Kvadrat Raf
Simons,
Sonar 2 - 673

Mineral

Raw materials, jewel tones, and a blend of dark and light neutrals creates a moody, and edgy aesthetic. This chic and modern palette pays homage to the construction and craft of goods.

Steelcase®

Call 800.333.9939 or visit Steelcase.com

 facebook.com/Steelcase

 twitter.com/Steelcase

 youtube.com/SteelcaseTV

©2017 Steelcase Inc. All rights reserved. All specifications subject to change without notice.
Trademarks used herein are the property of Steelcase Inc. or of their respective owners. Printed in U.S.A. FSC certified.