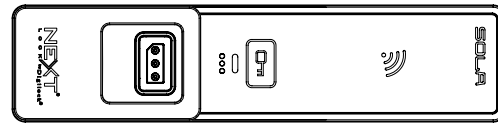
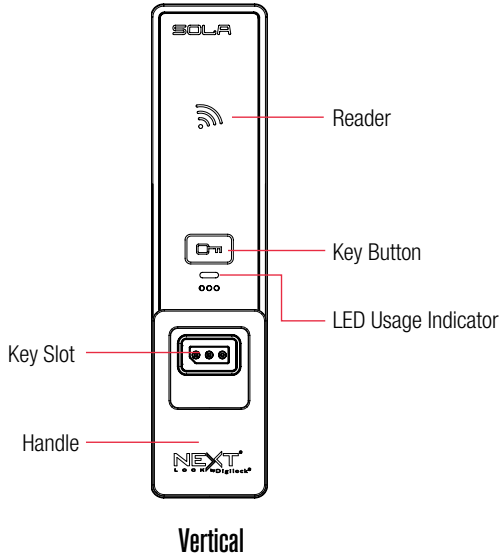


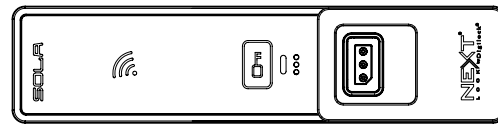
Sola locks with a touch RFID interface are operated by an RFID credential or by an ADA compliant User Key. Manager Keys provide management access and external power. Programming is accomplished via a Programming Key unique to the lock system.

Lock Orientation - Views

SOLA can be installed vertically or horizontally for left or right handed configuration.

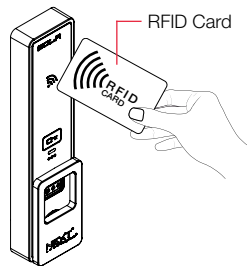
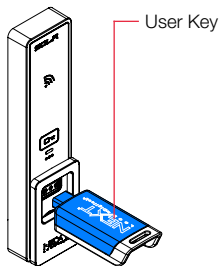


Horizontal with Handle on the Left



Horizontal with Handle on the Right

User Credentials



Keys



User Key



Manager Key¹



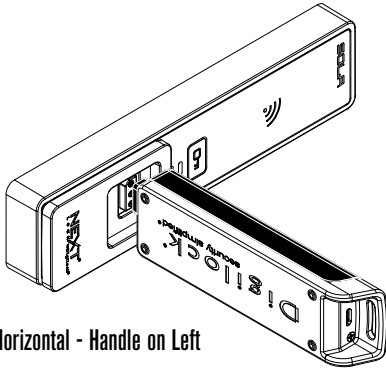
Programming Key²

	User Key	Manager Key ¹	Programming Key ²
Operates the lock	●	●	●
Overrides user access		●	●
Allows access for management inspection		●	●
Provides external power		●	●
Assigns user credential		●	
Sets lock functionality			●

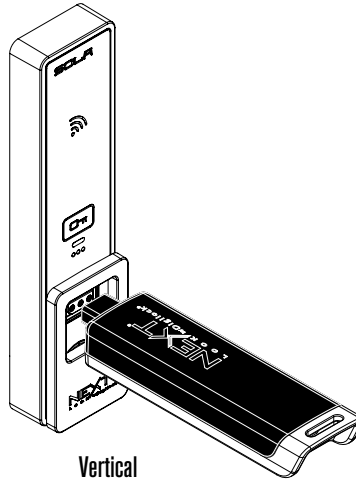
¹Up to 25 Manager Keys may be programmed to a lock.

²1 Programming Key allowed per lock group.

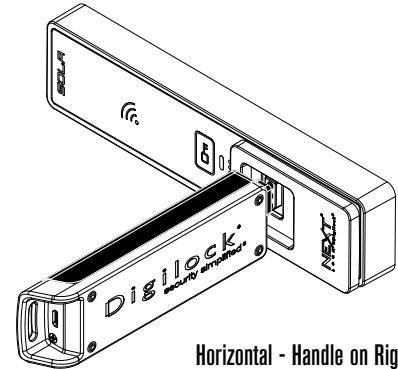
Key Insertion



Horizontal - Handle on Left



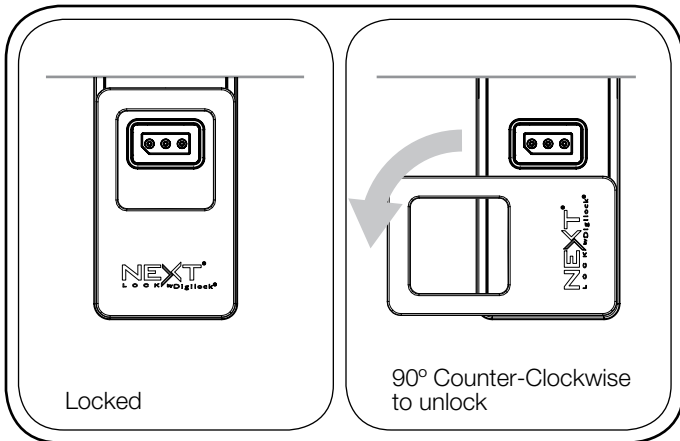
Vertical



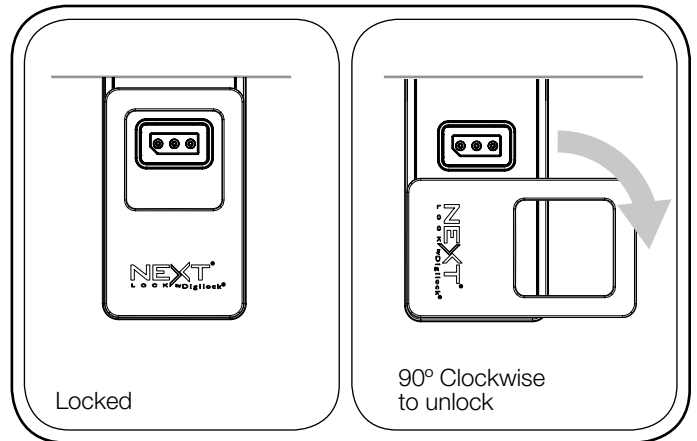
Horizontal - Handle on Right

Handle Positions

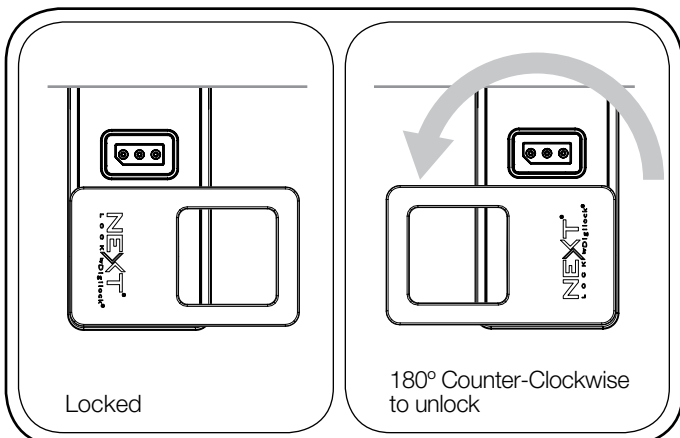
90°



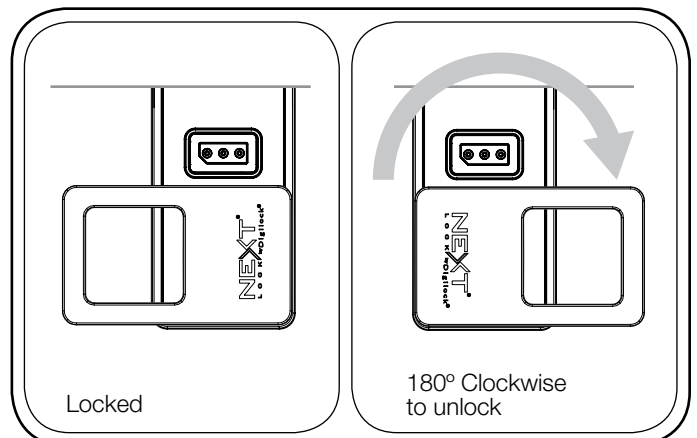
OR




180°

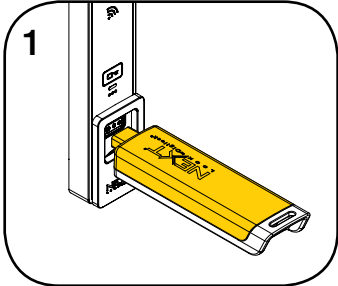


OR

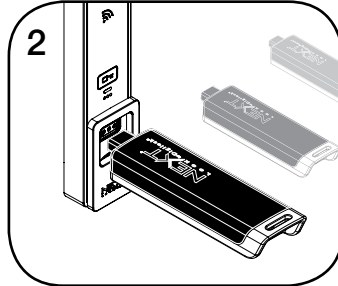


Setup

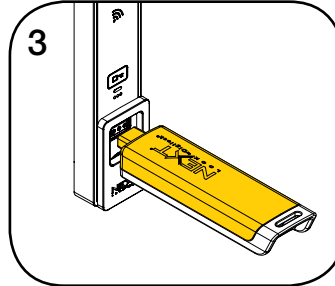
Locks are shipped with factory default settings (only operates by pressing ). Each lock must be set up to operate with a Programming Key and Manager Keys.



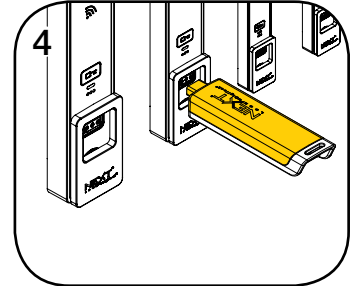
1
Insert the Programming Key.
A two-tone beep will be heard and the LED will flash.



2
While the LED is flashing, insert one Manager Key at a time.
A two-tone beep will be heard for each Manager Key programmed.



3
While the LED is flashing, insert the Programming Key.
A two-tone beep will be heard and the LED will turn off.

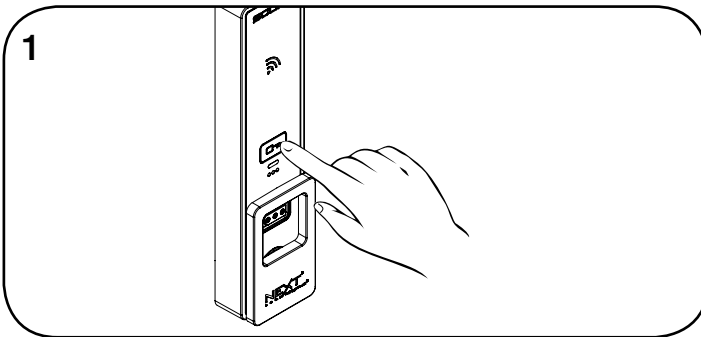



4
Repeat above steps for each lock or follow instructions to [Express Register Manager Keys](#) to setup all locks.

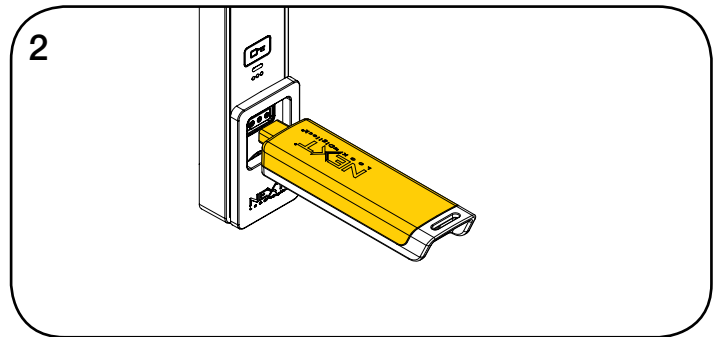
Programming Instructions

Express Register Manager Keys

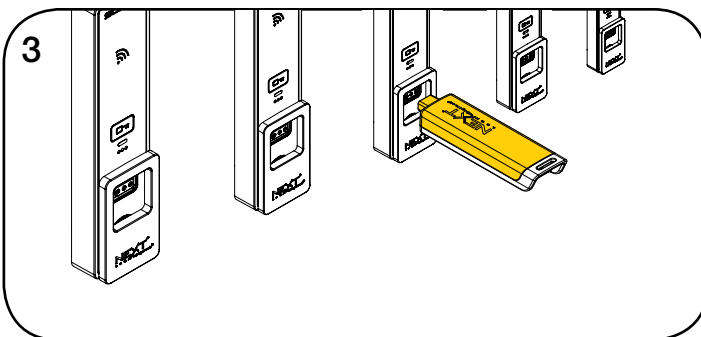
The Programming Key can quickly program multiple locks to operate with the same Manager Keys.



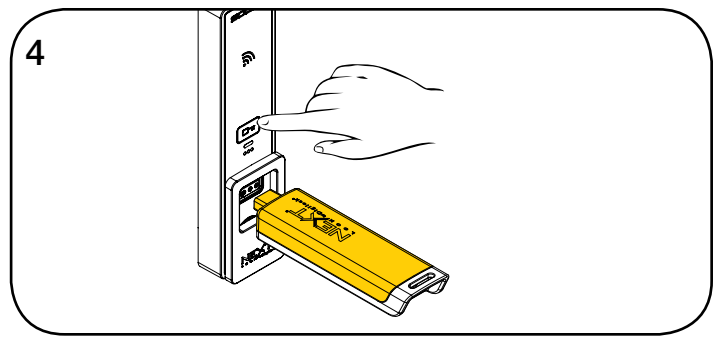
1
Go to a lock already programmed to operate with the Manager Keys. Touch and hold  for 10 seconds (a two-tone beep will be heard after 5 seconds followed by 2 sets of two-tone beeps after 10 seconds) then release.
The LED will flash.




2
While the LED is flashing, insert the Programming Key.
A two-tone beep will be heard and the LED will turn off.



3
At each lock to be programmed, insert the Programming Key.
A two-tone beep will be heard and the LED will flash once to indicate successful registration.



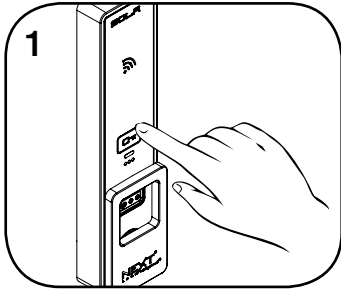
4
To end Express Registration mode:*
Go to any programmed lock.
Press  then insert the Programming Key.


*The Programming Key will continue to function in Express Registration mode until it is used to operate a lock.

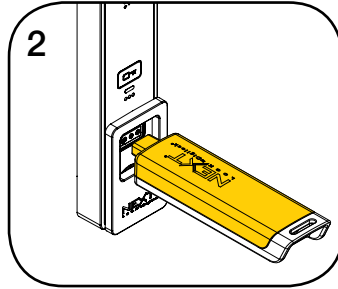
Programming Instructions

Add Manager Keys

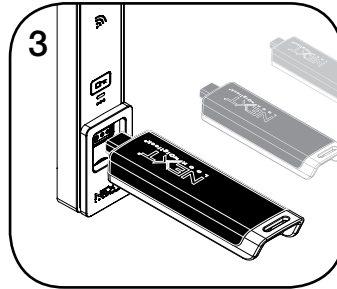
Manager Keys can be programmed to the locks at any time.



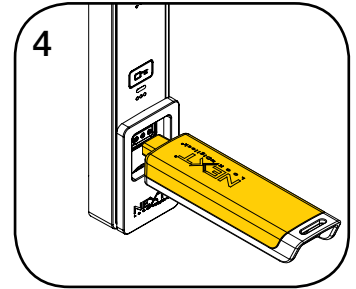
Go to a lock requiring additional Manager Keys.
Touch and hold  for 5 seconds (a two-tone beep will be heard after 5 seconds) then release.
The LED will flash.



While the LED is flashing, insert the Programming Key.
A two-tone beep will be heard.



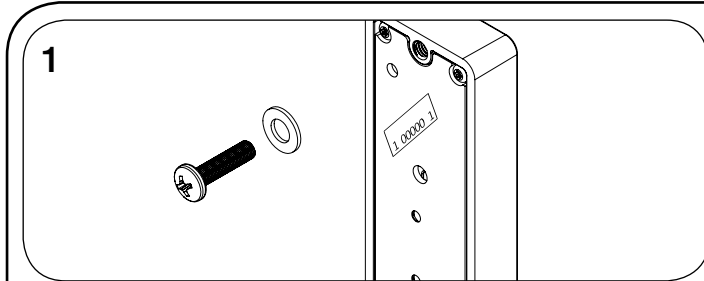
While the LED is flashing, insert each additional Manager Key one at a time.
A two-tone beep will be heard for each Manager Key programmed.



Insert the Programming Key.
A two-tone beep will be heard and the LED will turn off.
Repeat above steps for each lock or follow instructions to [Express Register Manager Keys](#) to quickly program multiple locks to operate with the same Manager Keys.

Replace Keys

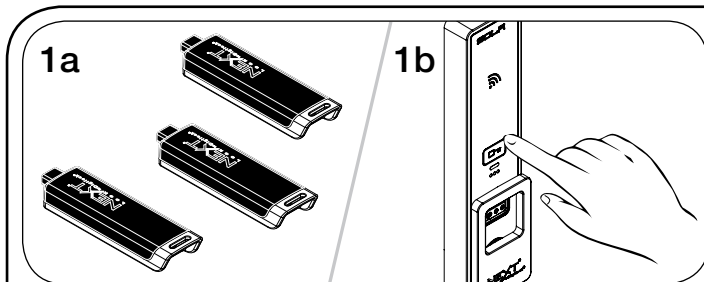
The locks must be reprogrammed to prevent the lost/stolen keys from operating a lock.




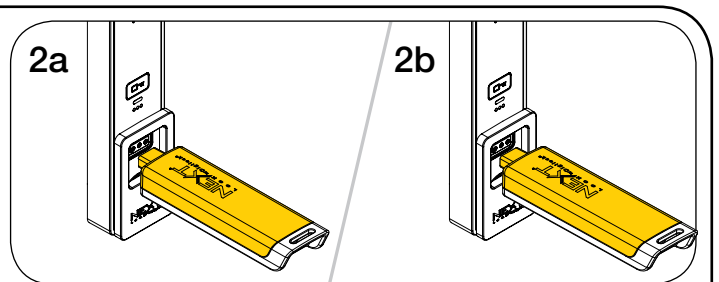
To replace the Programming Key:
Note the order or serial number (found on the lock's rear).



Contact Digilock Support to purchase a replacement Programming Key.



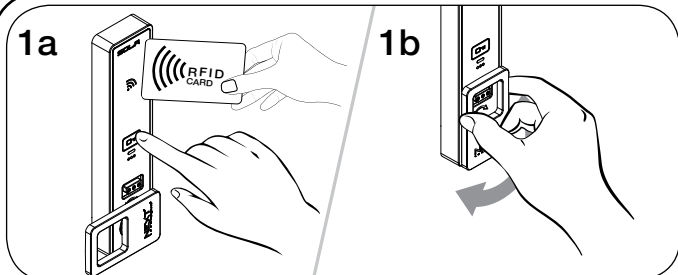
To replace the Manager Keys:
Collect all remaining and replacement Manager Keys.
Go to any lock operated by the lost/stolen Manager Keys. Touch and hold  for 5 seconds (a two-tone beep will be heard after 5 seconds) then release.
The LED will flash.




While the LED is flashing, insert the Programming Key.
A two-tone beep will be heard.
Insert the Programming Key again.
Three sets of two-tone beeps will be heard and the LED will turn off. All previously programmed Manager Keys will be erased.
Follow instructions to [Add Manager Keys](#) to program the remaining and replacement Manager Keys to the locks.

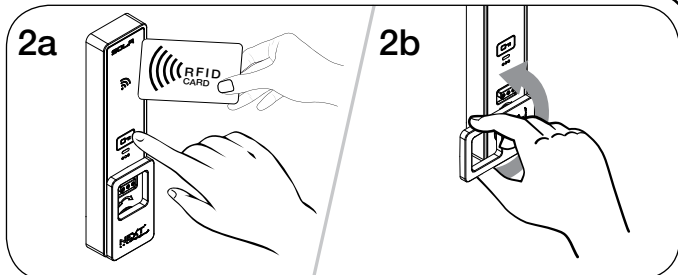
Operating Instructions - In Shared Use Functionality

In shared use functionality, the user presents an RFID credential or inserts any User Key to lock and the same User RFID Credential or User Key to unlock. Once unlocked, the locker is available for a different user.




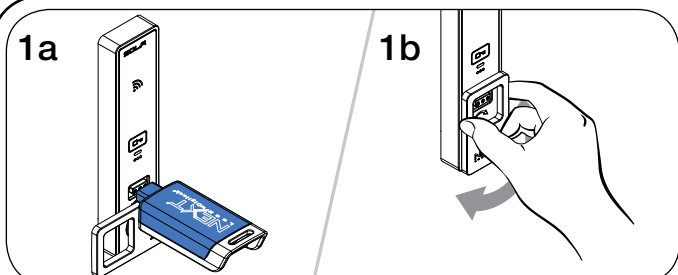
1a **1b**

Operate with a User RFID Credential
To lock: Close the door. Touch  then present an RFID credential, then turn the handle to the locked position.



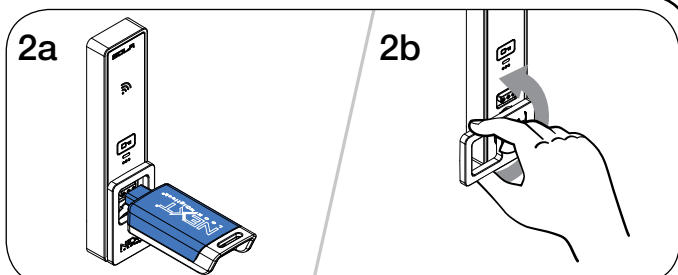
2a **2b**

To unlock: Touch  then present the same RFID credential, then turn the handle to the unlocked position. Open the door.



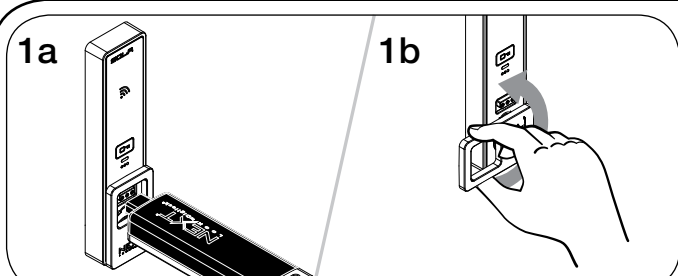
1a **1b**

Operate with a User Key
To lock: Close the door. Insert any User Key then turn the handle to the locked position.



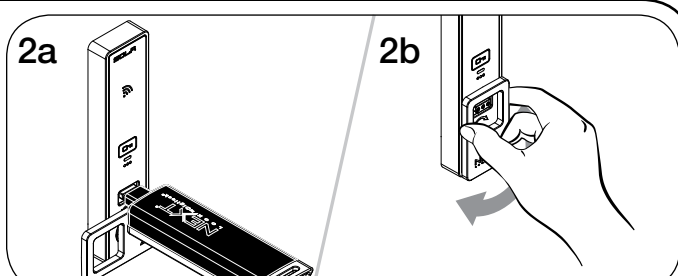
2a **2b**

To unlock: Insert the same User Key then turn the handle to the unlocked position. Open the door.



1a **1b**

Operate with a Manager Key
To unlock: Insert a valid Manager Key then turn the handle to the unlocked position. Open the door.



2a **2b**

To relock: Close the door. Insert a valid Manager Key then turn the handle to the locked position.*

*If a valid Manager Key is used to relock, the previous user credential will continue to operate the lock.

Support

Low Battery Indicator

After locking or unlocking, the lock emits two sets of three beeps indicating that the batteries are low. Replace the batteries.

Does not Unlock with the User RFID Credential or User Key

The lock does not recognize the User RFID Credential or User Key. For immediate access, operate with a valid Manager Key.

Does not Operate with a Manager Key

The lock does not recognize the Manager Key. Follow instructions to [Add Manager Keys](#) to program the Manager Key to the lock. For immediate access, operate with another valid Manager Key.

Does not Operate with the Programming Key

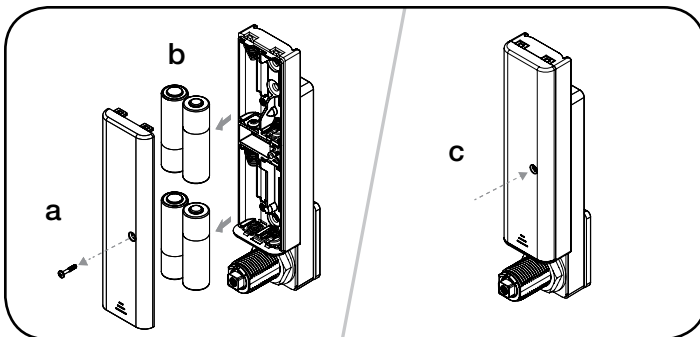
The lock does not recognize the Programming Key. If the Programming Key has been replaced, operate with the Replacement Programming Key. Contact Digilock support for additional assistance.

No Audible Feedback when is Pressed

The batteries may need to be replaced. For immediate access, operate with a valid Manager Key.

Battery Replacement

It is not necessary to uninstall the lock from the door.
In case of battery failure, operate with a valid Manager Key.



- a. Remove the screw and the battery cover.
- b. Replace the four premium AA batteries.
- c. Replace battery cover and screw.