

USA_Scott Wilson & Minimal, 2010

MEET AT THE
NEXT LEVEL



SW_1



MEETING REALITY

Meetings aren't what they used to be. Collaboration today is less formal. Creative sessions often span hours. Rooms must play multiple roles.

Introducing SW_1, a comprehensive solution from Coalesse for the evolving realities of workplace collaboration. Lower and more intimate, wider and more comfortable, lighter and less restricting, SW_1 is a startling redefinition of the meeting space.

SW_1 is the brainchild of Scott Wilson & Minimal, renowned designers of technologies that work for people. Lounge-inspired yet decidedly work-oriented, it brilliantly blends live/work elements in a flexible system of novel-yet-familiar seating and elegant-yet-functional tables. A breakthrough in simple sophistication.

A place where minds can meet.







*I do not want to act unless I have a great intimacy
with the people I'm working with.*
_Armand Assante

Conference room furnishings have remained unquestioned for decades, yet the needs of knowledge workers have radically changed. SW_1 is the eloquent next step.

LOW PROFILE HIGH POWER

While SW_1 is offered in both low and conventional heights, its stunning low-conferencing application is the signature look and feel. A mere three-inch drop creates another atmosphere entirely. Greater intimacy. Easier conversational flow. Remarkable comfort and less fatigue no matter how long the meeting.

The elegant mesh-backed swivel chair, with its open arms and broad cushioned

seat, accommodates changes in posture while opening sightlines. Gone is the restrictiveness of most conference seating. Users collaborate naturally, freed from the shoulder-to-shoulder formation of most conference rooms.

The SW_1 tables, with their elegant lines and optional tablet extensions, complete this light, open, transformative solution. A fresh perspective from any angle.









A single conversation across the table with a wise man is better than ten years mere study of books.
_Henry Wadsworth Longfellow

CHANGE MANAGEMENT

The most coveted office furniture today is a prudent real estate investment. Change its configuration and you change the purpose of a room, improving your return on investment.

SW_1 moves with the mood. New collaborative options are created with a few simple shifts. Turn the square tables diagonally to create a diamond-shape conferencing effect so larger groups, who would otherwise be forced to sit around one long table, are able to confer in smaller teams or together. With table extension tablets, any member can pull back temporarily to work privately on a device.

This is a system of possibilities. Large-group meetings at a lower, more intimate level that draw people together. Small-group gatherings around low, round tables for a coffee conference. Breakout teams that cluster to brainstorm then re-converge with others to pool ideas simply by swiveling to another angle. Or mobile workers who touch down comfortably to perch a laptop on the SW_1 chair tablet. SW_1 turns space into place.



*He gains everyone's approval who mixes
the pleasant with the useful.*
_Horace

Beautiful, comfortable, functional and highly sustainable. Can all four qualities be found in a single line of office furniture? As it turns out, yes.

COMFORT ZONE

SW_1 offers it all. Eminently flexible, it moves effortlessly from the conference room to occasional settings for impromptu meetings. The occasional table becomes an attractive centerpiece for a gathering of chairs. And with its automatic return-to-center swivel, the SW_1 chair always maintains the intended look of the room.

Sustainability is a key attribute. The chair's cushioned elements can be snapped off and interchanged when worn or in need of a refresh. The 3D knit mesh is made for each chair so there's no waste in manufacturing. The cast aluminum legs and posts are recycled metal that is itself fully recyclable.









*A table, a chair, a bowl of fruit and a violin;
what else does a man need to be happy?*
_Albert Einstein

Conventional doesn't have to mean severe. When greater formality is required, SW_1 lifts the atmosphere and attitude with its pleasing shapes and wide array of material choices.

TRADITIONAL DEPARTURE

When conventional-height meeting environments are required, SW_1 rises to the occasion. The distinctive super ellipse conference table with its pleasing shape lends drama to rooms that deserve more than a rectangle. Tops can be fitted with grommets that hold the integrated PowerPod for tabletop power access.

Great tables are the anchor points in any outstanding office environment. The SW_1 table collection of rounds, squares, and super ellipse tables are available in a wide variety of finishes including glass, veneer, Corian and laminate. The chairs can be designed to match in harmonized mesh/upholstery or leather combinations.







CONFERENCE HEIGHT (28.5") SOLUTIONS

SW_1



TABLETOPS

1/2 inch-thick tops available in glass, veneer, Corian or laminate.

SUBSTRUCTURE

Substructure available in Milk or Black.

Table glide adjusts 3/4" for leveling on uneven floors



CONFERENCE CHAIR

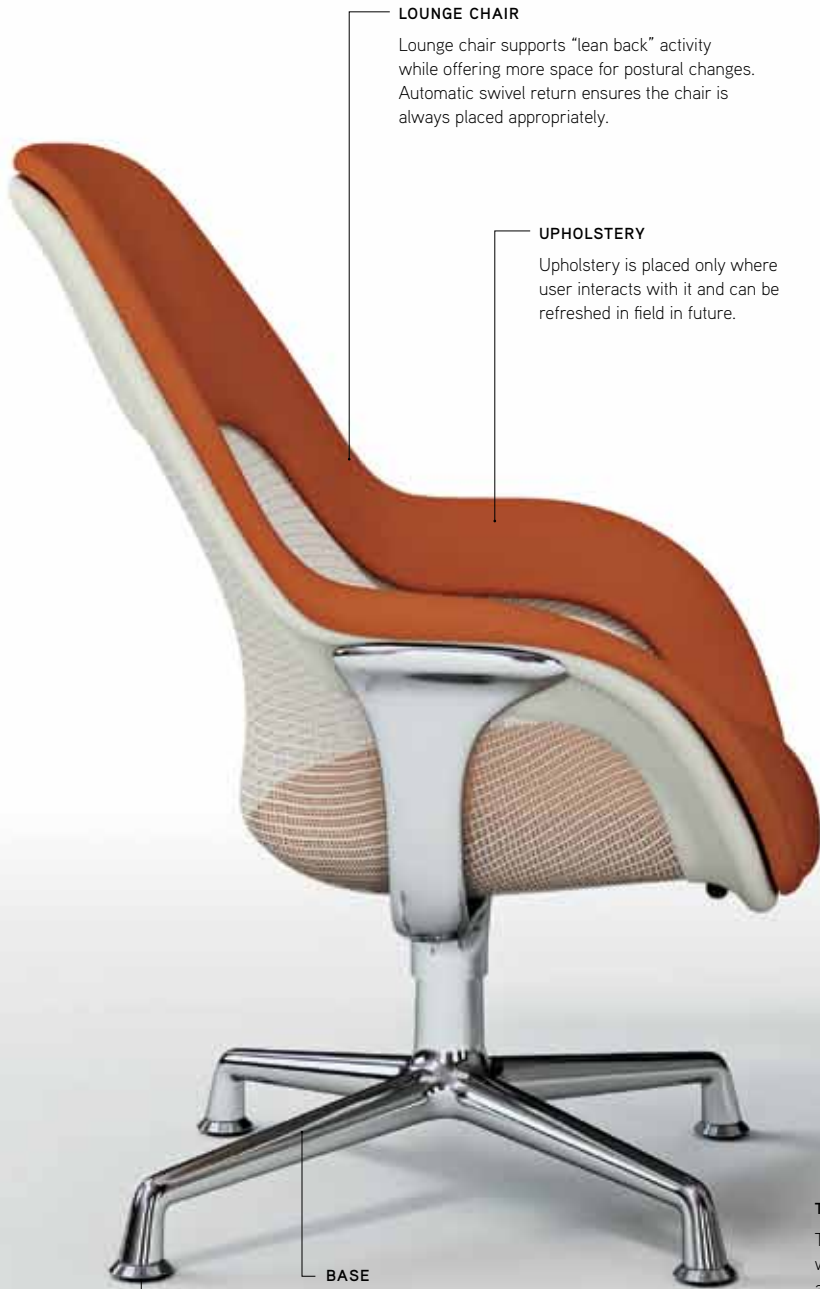
Height-adjustable conference chair provides the SW_1 seating aesthetic for conventional conference-height tables.

3D knit mesh provides back support.

Conference chair available with casters or glides.



COLLABORATIVE HEIGHT (26") SOLUTIONS



LOUNGE CHAIR

Lounge chair supports "lean back" activity while offering more space for postural changes. Automatic swivel return ensures the chair is always placed appropriately.

UPHOLSTERY

Upholstery is placed only where user interacts with it and can be refreshed in field in future.

BASE

Base is polished aluminum.

Chair glides are aluminum with non-marring inserts.



TABLET

The pull-out tablet allows you to bring your work to you. Available as an option on 26" high tables only, in Milk or Black.

TABLE

Collaborative height (26"H) is a clear alternative to conventional conferencing. Provides a lower, more informal setting.

WIRE MANAGEMENT

Grommet with wire manager allows wires to be accessed at the tabletop while routing them down the outside of the leg to the floor. Available in Milk or Black.

TABLE BASE

Table base comes in V-base with or without in-line legs for rectangular and super elliptical tops. Base is 4-star for round and square tops.





Recognizing the need is the primary condition for design.
_Charles Eames

Design can be thrilling when it transforms what we take for granted into something we notice and appreciate. Like PowerPod. An artful solution to the mundane task of plugging in.

POWER & PRIVACY

PowerPod is the first power strip made to congregate laptop and phone cords on top of a table without looking like it should be hiding. A hefty accessory holder fits neatly on top when PowerPod is not in use. Optionally, SW_1 tables are available with a coordinated grommet that hosts the PowerPod so the main power cord disappears.

The distinctive SW_1 tablet extension, an option on low conference-height tables, glides smoothly and firmly away from the tabletop, allowing users to access technology, documents or other personal effects while retaining a comfortable lean-back posture.

SW_1 offers an extensive statement of line-supporting collaborative and social activity wherever they occur in the workplace.

APPLICATIONS



A DIAMOND SHAPE COLLABORATION



B COLLABORATIVE TOUCHDOWN SPACE



C LOUNGE-BASED PRESENTATION ROOM (TABLET AVAILABLE WINTER 2011)



D LOUNGE-BASED SEMINAR/BRAINSTORM



E PRIVATE OFFICE TABLE DESK AND GUEST CHAIRS



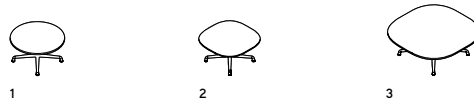
F CONVENTIONAL CONFERENCING

The SW_1 collection is a system of beautiful choices with three table heights and two chair heights. The system can adapt to most group applications in the workplace.

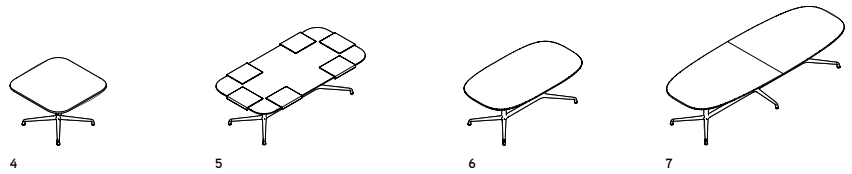
DETAILS

Tables

1–3
OCCASIONAL TABLES (15"H)



4–7
COLLABORATIVE-HEIGHT TABLES (26"H)



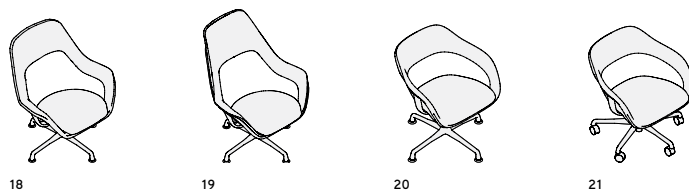
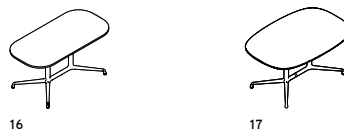
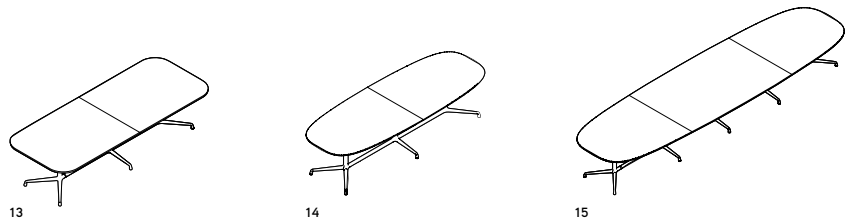
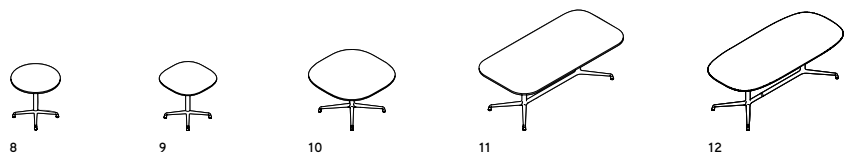
8–15
CONFERENCE-HEIGHT TABLES (28.5"H)

16–17
WORK TABLES (28.5"H)

Seating

18–19
LOUNGE CHAIRS

20–21
CONFERENCE CHAIRS



The SW_1 chair is available in a low- and high-back lounge and conference chair. Tables are available in occasional, low-collaborative (26") and standard conference (29") heights.

DETAILS

Product Features

TABLE

- A. COMMON EDGE PROFILE
- B. GLASS EDGE DETAIL
- C. GROMMET DETAIL
- D. CABLE MANAGEMENT DETAILS
- E. TABLE GLIDE
- F. TABLET EXTENDED

CHAIR

- G. 4-STAR BASE / GLIDE
- H. 5-STAR BASE / CASTER
- I. TABLET ON LOUNGE CHAIR
(TABLET AVAILABLE WINTER 2011)

PRODUCT FEATURES



Surface Materials

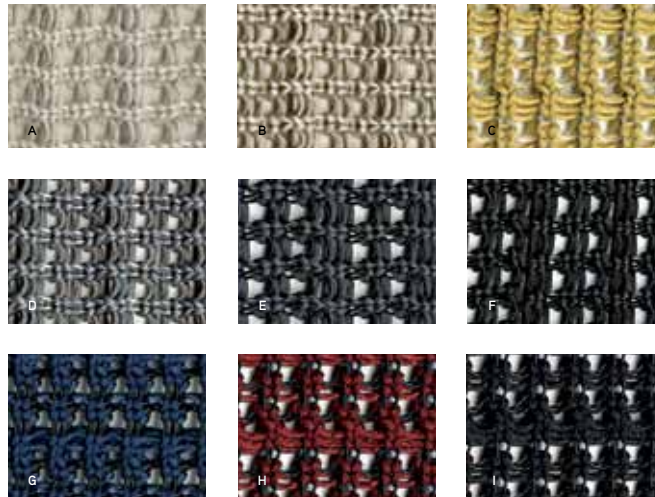
3D KNIT MESH

- A. IVORY
- B. STONE
- C. GOLDEN
- D. GRAY
- E. COAL
- F. BROWN
- G. ROYAL
- H. GARNET
- I. BLACK

TRIM COLORS

- A. MILK
- B. BLACK

STANDARD 3D KNIT COLORS



Details

SEATING:

UPHOLSTERY—ALL COALESSE GRADED-IN (DESIGNTEX, LUNA, AND MAHARAM) AND COM. LEATHER—ALL STANDARD ELMO LEATHERS AND COL. 3D KNIT MESH—ALL STANDARD COLORS. ADDITIONAL COLORS AVAILABLE BY SPECIAL REQUEST.

TABLETOP FINISHES:

VENEERS—ALL COALESSE STANDARD VENEERS, SPECIAL REQUESTS AND STAIN TO MATCH. GLASS—ALL COALESSE FLAIR-COATED COLOR OPTIONS LAMINATES—ALL STANDARD COALESSE LAMINATES AND GRADED-IN OPTIONS TRANSOLID—WHITE CORIAN

ALL BASES:

MATTE POLISHED ALUMINUM

TRIM FOR TABLE SUBSTRUCTURE, GROMMET, WIRE MANAGER, TABLET AND CHAIR TABLET:
MILK OR BLACK

TRIM COLORS



ADDITIONAL PRODUCTS SHOWN:

- BINDU EXECUTIVE CHAIR
- BOB CONFERENCE CHAIR
- DENIZEN BENCH
- HOST CREDENZA