

Steelcase
EDUCATION



Node™
seating

For the Many Modes of Learning

Today's students desire an active learning environment—expecting more from their classrooms than ever before. They want their surroundings to support co-learning, co-creation and open discussion.

Educators are often faced with a tough choice: promote active learning or organise a classroom to fit as many students as possible. The existing classroom footprint is only so big, and there's not much flexibility. Until now.

The Node™ chair is mobile and flexible. It's designed for quick, easy transitions between room configurations. With Node, a classroom can flex from a lecture-based mode to a team-based mode, and back again, without interruption. Node can take passive space and make it active, supporting active and team-based learning, even when student density is important.



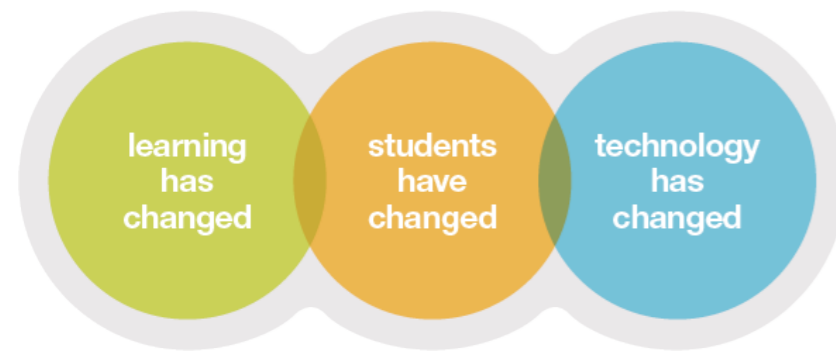
“My most memorable classes are the ones where we break away from lecture and work in a team.”

ROSHAN
Student

Observation & Insights

In our on-site research, we found cramped, static spaces designed for passive one-way learning: tight rows of desks and chairs that inhibit movement and interaction, and instructors confined to the front of the room, where there are few opportunities to connect with students.

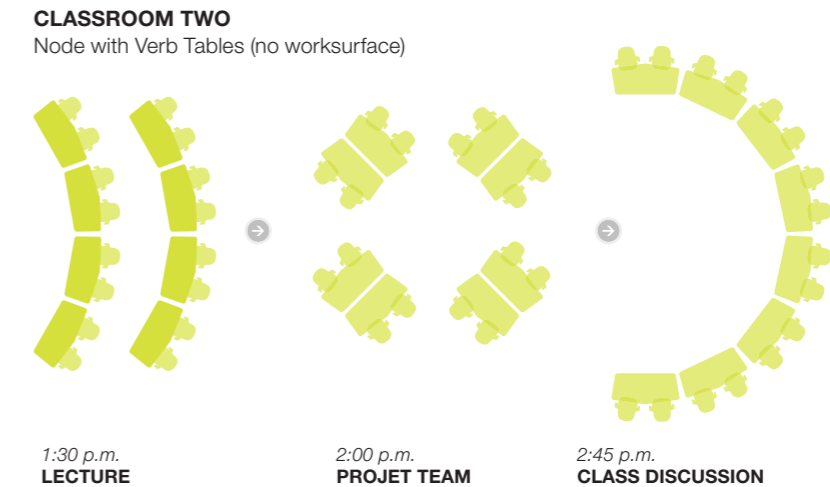
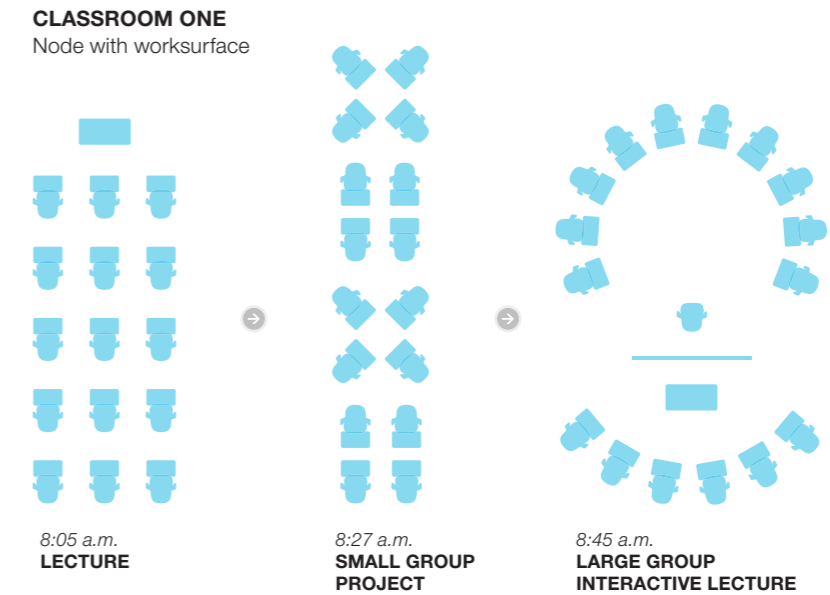
Students are bringing new tools, new attitudes and new expectations into the classroom. In order to keep pace, the classroom has to change. Research points to the fact that learning is enhanced when it is social and active. A single approach to teaching is no longer enough. Educators are now turning to multiple pedagogies to support multiple learning styles.



EDUCATION HAS CHANGED

“The biggest issue with the way the classroom is set up is that it assumes there’s one way of teaching and one way of learning .”

LESLEY
Professor



A Smart Solutions



Store

The base of the Node chair provides a unique storage solution for backpacks and student belongings that usually clutter the aisles. This allows quicker and easier transitions between teaching modes. Even the arms serve a storage purpose. Aside from being a place to rest your elbows, they are designed to hold a backpack or bag, keeping personal items safe, secure, and close at hand.

Fit

The Node chair has an adjustable worksurface, providing a perfect fit for students of all shapes and sizes. The Node chair's worksurface accommodates both left- and right-handed students. Ergonomics of the seat bend and flex with the student.

Move

The Node chair is highly mobile—a quality that translates directly into classroom performance. After all, a lesson plan can be carried out more effectively when seating is arranged and rearranged effortlessly. Traditional classroom seating has limited mobility, putting the burden on educators to adapt. The Node chair, however, accommodates any teaching style.

The swivel seat gives students the freedom to shift focus throughout the room. And, because the personal worksurface swivels in tandem, books, laptops and other information remain at their fingertips. It's subtle, but clear sight lines to the instructor, fellow students and whiteboards can dramatically enhance interaction.







Features + Benefits

How's this for out-of-the-box thinking?

Three simple parts assemble in 30 seconds.





Tripod Base

Base keeps backpacks and personal belongings out of the aisle while also providing a comfortable place for students to rest feet during class.



Five-Star Base

Choose between tripod with storage or five-star with seat-height adjustability, both available with worksurface. Five-star base is also available in stool height.



Seat Shell

Flexible seat with simple adjustments keeps people comfortable in a variety of postures. Comfort without upholstery means easy maintenance.



Worksurface and Cupholder

Personal worksurface is adjustable, non-handed, and large enough to support digital and analog resources. It comes with a cupholder option which can simply slide under the worksurface when not in use.



Cushion option

Optional cushion seat available for added comfort.



Casters

Casters lend mobility for quick, easy transitions between learning modes.



Seat Shell Colors

Celebrate your school's brand with 21 color options.



Tablet Stand

Tablet stand supports all top-selling tablets and smartphones in both portrait and landscape positions, making content easy to view and freeing up space on the worksurface for other class materials.

Statement of Line

Node Chair Options



Tripod Base with work surface and casters

Tripod Base without work surface, with casters

***Five-Star base with work surface**

***Five-Star base without work surface**

***Five-Star Stool**

* Made in the US with extended lead time.

Components

Flexible seat. Flexible seat with simple adjustments keeps people comfortable in a variety of postures.

Easy maintenance. Comfort without upholstery means easy maintenance.

Open seat design. Open seat design offers easy access, while arms serve as bag or purse hooks.

Cushion option. Cushion is mounted to the seat to provide maximised comfort to user, especially when sitting for long hours.

Swivel seat. Swivel seat keeps open sight lines.

Casters. Casters lend mobility for quick, easy transitions between configurations.

Cupholder. Optional cupholder frees up work surface area for books and technology.

Base. Base keeps backpacks and personal belongings out of the aisle.

Personal work surface. Personal work surface is adjustable, non-handed, and large enough to support digital and analog resources.

Tablet stand. Tablet stand supports all top-selling tablets and smartphones in both portrait and landscape positions, making content easy to view and freeing up space on the work surface for other class materials.

Steelcase Warranty. Steelcase Warranty with elevated durability testing makes Node an easy choice.

Dimensions

Item	Tripod Base	Five-Star Base	Five-Star Stool
Seat Depth	420mm	420mm	420mm
Maximum seat width	496mm	496mm	496mm
Seat height from floor	464mm	403mm to 556mm	606mm to 810mm
Back height from floor (not seat)	889mm	845mm to 978mm	1038mm to 1226mm
Width	604mm	604mm	692mm
Worksurface Size	565mm x 305mm	565mm x 305mm	565mm x 305mm
Worksurface Depth Adjustment	184mm x 381mm	184mm x 381mm	184mm x 381mm
Maximum Width between Arms	512mm	512mm	512mm
Worksurface Height from Floor	724mm	N/A	N/A

Sustainability

People.Planet.Profit

By rethinking our business systems and designing our products to avoid negative impacts on humans and the environment, we contribute to a sustainable future for the planet and its people. We commit to advance our practices through continuous learning and building partnerships with our customers, business partners and environmental thought leaders to optimise our performance and contribute to the science and practice of sustainability.

TO FIND OUT MORE, VISIT
www.steelcase.com/sustainability

Product Environmental Certifications

- McDonough Braungart Design Chemistry (MBDC)
- Life Cycle Assessment
- AFRDI Green Tick Product Certification
- BIFMA Level® 2 certification
- Indoor Advantage™ Gold from Scientific Certification Systems

Surface Materials

Seat Shell

Plastic



6332 Citron 6333 Picasso 6335 Wasabi 6336 Jazz 6337 Element 6BD1 Aubergine 6BD2 Peacock 6BD3 Jungle 6BD4 Merlot 6BD5 Honey 6BD6 Lagoon 6BD7 Saffron

Fabric

Omni-R



Cloud Coconut Malt Cork Cocoa Maize Tangerine Scarlet Crimson Hydrangea Ink Blue Sapphire Azure



Blue Jay Wasabi Nickel Rhino Ebony

Buzz 2



Sunrise Pumpkin Rouge Burgundy Blue Navy Tornado Black Chocolate Stone Sable Alpine Meadow



Ivy

Cogent Connect



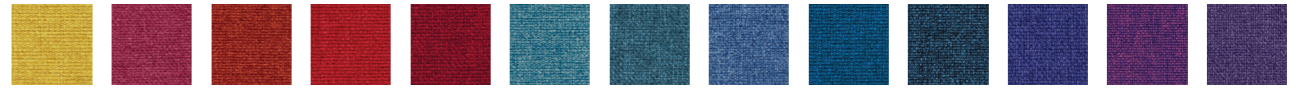
Canary Turmeric Tangerine Saffron Scarlet Lipstick Concord Aubergine Blue Print Royal Blue Blue Jay Lagoon Maya Blue



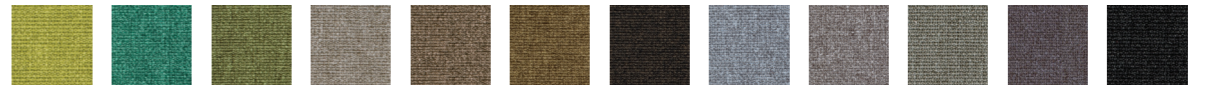
Coconut Malt Nugget Quick Silver Graphite Lizard Peacock Root Beer Sailor Licorice Graphite Nickel

Fabric

Medley

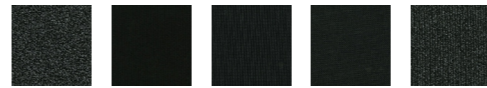


Mustard Yellow Dark Pink Orange Mix Red Cherry Red Sky Blue Water Blue Denim Blue Jean Blue Blue purple Purple Dark purple



Apple green Dark green Khaki green Beige Chamois Khaki Mocha Light grey Grey brown Grey Pepper Pepper Black

New Black



Jack 5J08 James 5J09 Bruce 5J10 Henry 5J11 Harley 5J12

Paint for Metal



4799 Platinum Metallic

Tripod Base



6249 Platinum Solid

Personal Worksurface



6249 Platinum Solid

Casters



Black

Surface material images are provided as a preliminary color reference and should not be used for final color selection.



steelcase.asia

Hong Kong +852 2520 0160 **Tokyo** +81 3 3448 9611 **Sydney** +61 2 9660 5511 **Shanghai** +86 21 6137 6288
Beijing +86 10 5911 3988 **Singapore** +65 6738 5225 **Mumbai** +91 22 6121 3500 **Bangalore** +91 80 3055 0300
Delhi +91 124 6103 000 **Hyderabad** +91 40 67046400

©2020 Steelcase Inc. All rights reserved. All specifications subject to change without notice.
Trademarks used herein are the property of Steelcase Inc. or of their respective owners.