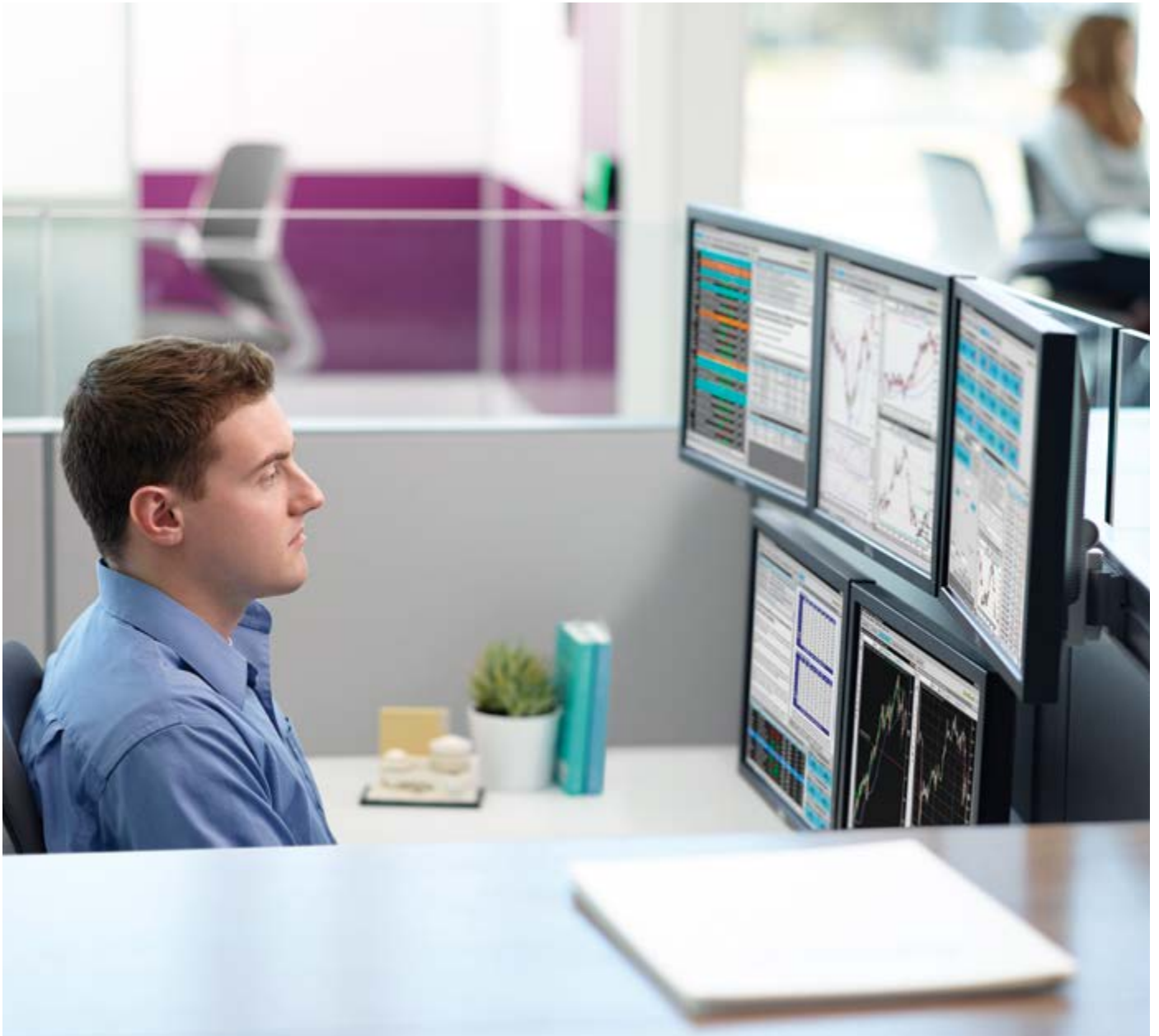


Eyesite
flat panel display supports

details®

More displays, comfort and control. As technology quickly evolves, displays are coming in more shapes and sizes than ever before, and employees are using more of them. Research has shown that increasing a worker's display area makes it easier to complete their tasks and can improve productivity up to 63%.*

By allowing users to control the angle and focal depth of their displays—regardless of quantity and size—the Eyesite® collection gives them the ability to maximize display usage, increase personal comfort and enhance productivity.



Five display bar-over-bar configuration on a 26" column. Triple display bar with optional pivot brackets.

IN 2008: 1%
IN 2012: 30-40%

Percentage of people using more than one display.

Source: NEC Display, as reported by The New York Times, February 7, 2012



Dual display configuration on 12" column with adjustable focal depth bar and optional pivot brackets.



FOCAL ADJUSTMENT

Adjustable focal depth bars provide 13" of adjustability. When not in use, displays tuck back neatly, clearing valuable worksurface space. Fixed focal depth bars are also available.



Eyesite's 26" column can accommodate up to six displays using two triple bars in a bar-over-bar configuration.

Improved flexibility for up to six displays. Eyesite's 12" and 18" columns offer a range of display and laptop configurations including single, dual and triple display bars to meet today's ever-expanding user needs. With Eyesite's 26" column, employees can easily utilize up to six displays in a variety of arrangements.



Four display bar-over-bar configuration on a 26" column with optional fixed focal depth bars.



**12" COLUMN WITH
ADJUSTABLE FOCAL
DEPTH BAR**

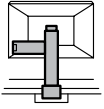


**18" COLUMN WITH FIXED
FOCAL DEPTH BAR**

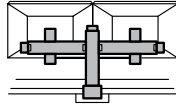


**26" COLUMN WITH
FIXED AND ADJUSTABLE
FOCAL DEPTH BARS**

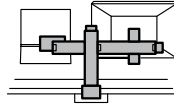
STATEMENT OF LINE



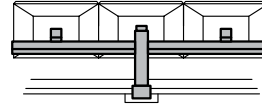
Single



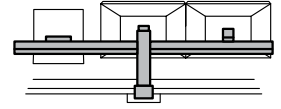
Dual



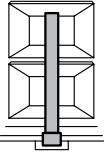
Dual with laptop



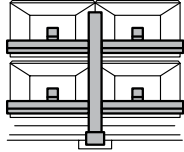
Triple



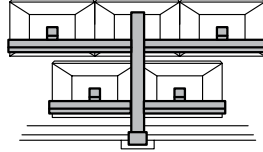
Triple with laptop



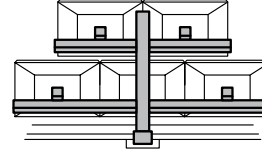
Bar-over-bar
(1 over 1)



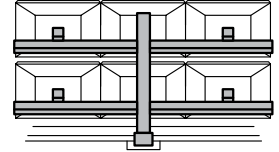
Bar-over-bar (2 over 2)



Bar-over-bar (3 over 2)



Bar-over-bar (2 over 3)



Bar-over-bar (3 over 3)

For further options, see Eyesite Applications Guide.

SURFACE MATERIALS

■ Platinum

Colors are representative and may vary slightly from actual material.

SUSTAINABILITY

Eyesite meets Silver Cradle to Cradle specifications.*

Depending on how it's configured, Eyesite total recycled content ranges from 22–30%, made up of 17–23% post consumer content and 5–7% pre-consumer content.

Eyesite components 99% recyclable.

**McDonough Braungart Design Chemistry, LLC, an independent product and process design firm, assesses and certifies products that use environmentally safe and healthy materials and are designed for material reutilization and social responsibility. Cradle to Cradle Certified is a certification mark of MBD.*

DEALER
LOGO

Call 888.783.3522 or visit steelcase.com/details

 facebook.com/steelcase

 twitter.com/steelcase

 youtube.com/steelcasetv

details®

Item #13-0000209 5/13 ©2013 Steelcase Inc. All rights reserved. All specifications subject to change without notice.
Trademarks used herein are the property of Steelcase Inc. or of their respective owners. Printed in U.S.A. FSC certified.