

Required Tools



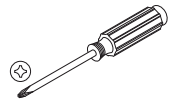
1. Power Driver



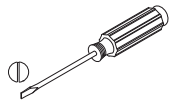
2. Plus Bit



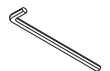
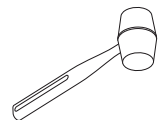
3. Minus Bit



4. Plus Screwdriver



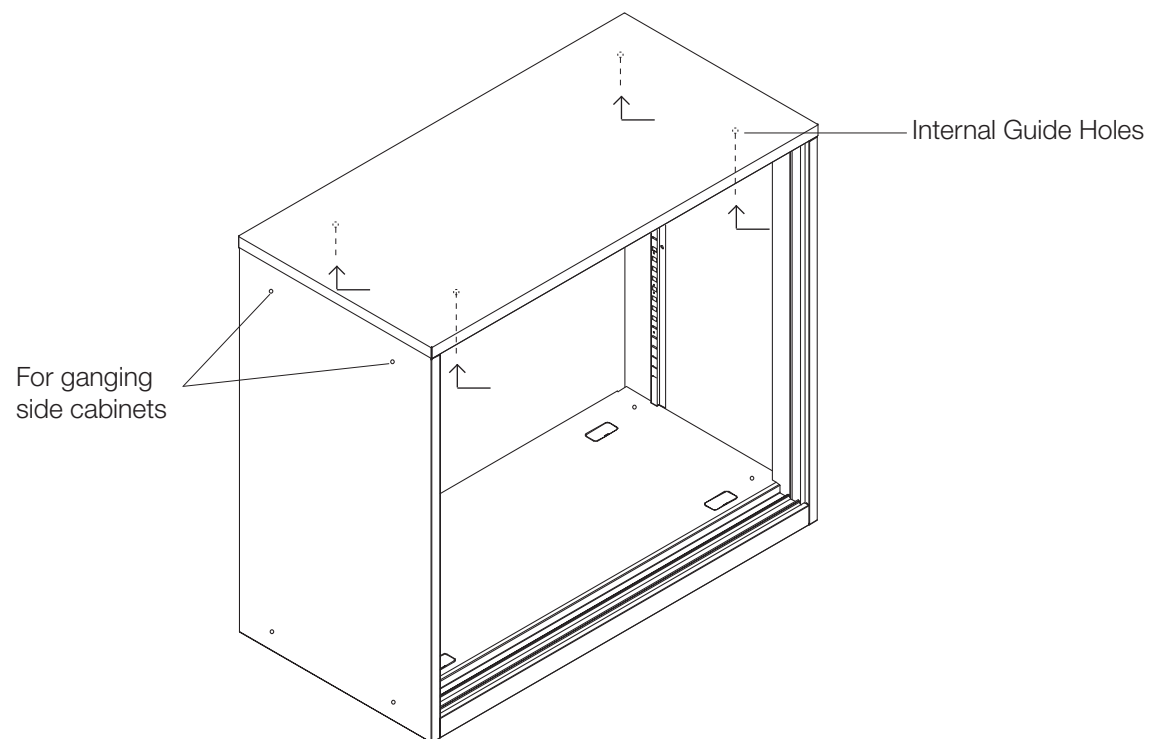
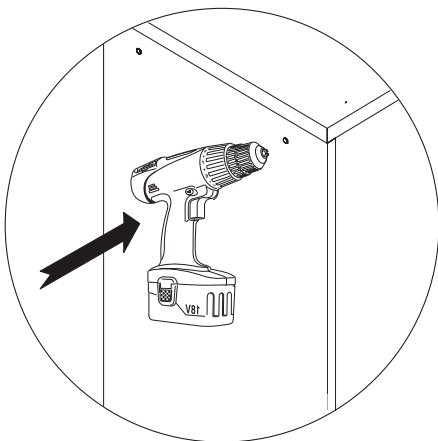
5. Minus Screwdriver



Disassembly can be achieved by using the assembly instructions as a guide, further break down of the main structure is not required as it is composed of one material type.

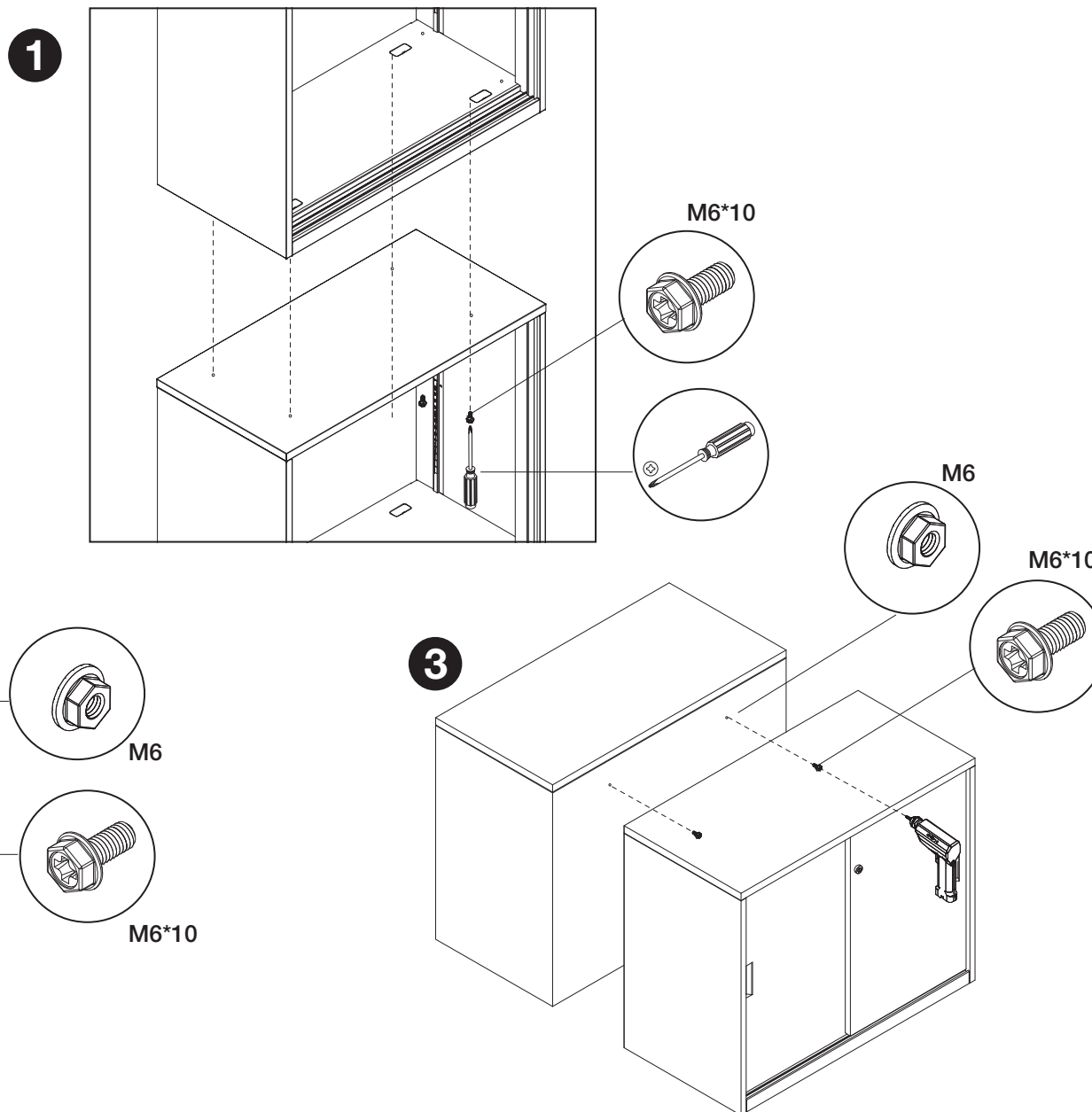
All cabinet are without pre-cut holes except for Single Hinge Door

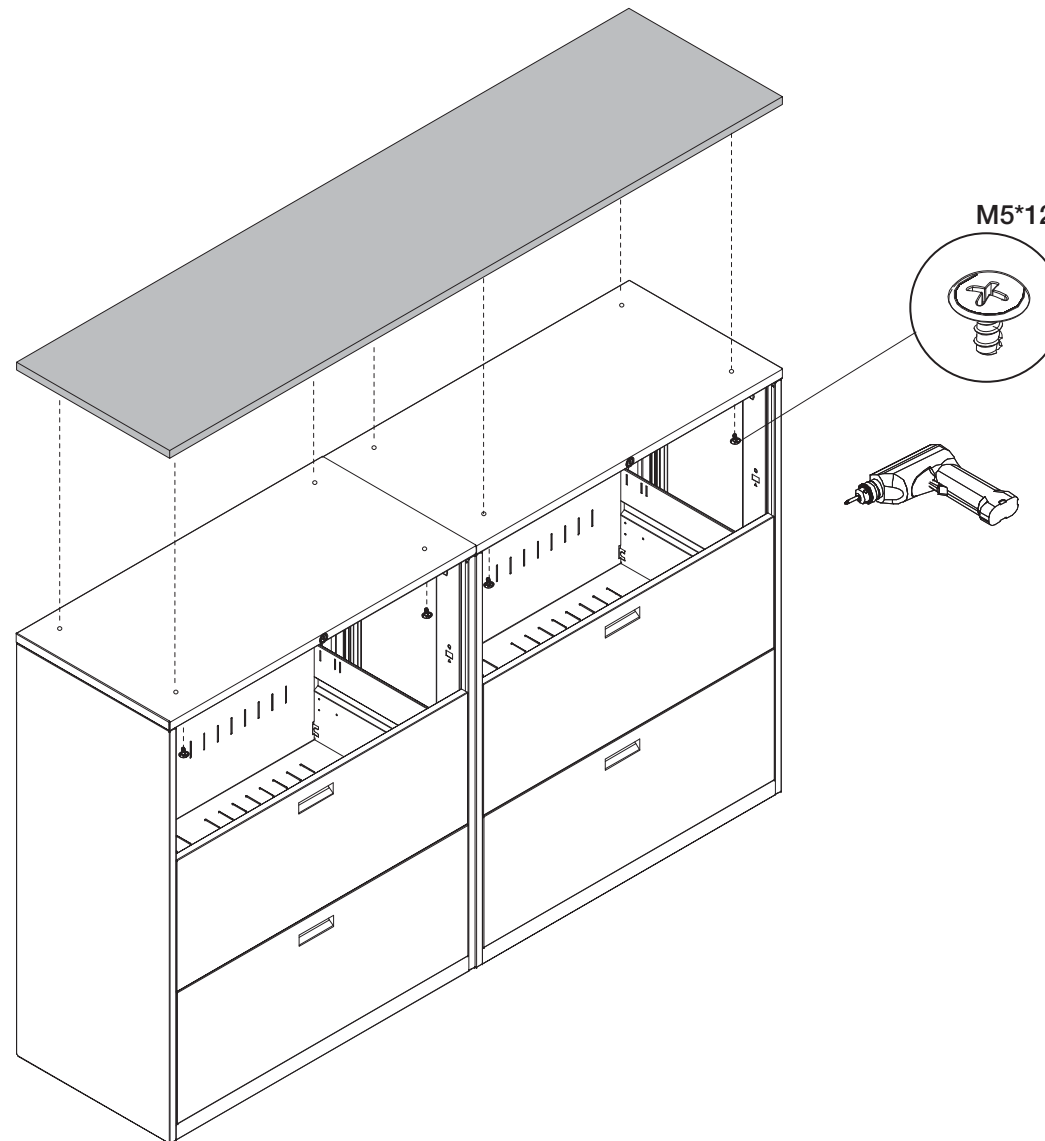
1. For up-down ganging, installer can refer to guide holes from inside to drill out



Ganging Cabinets

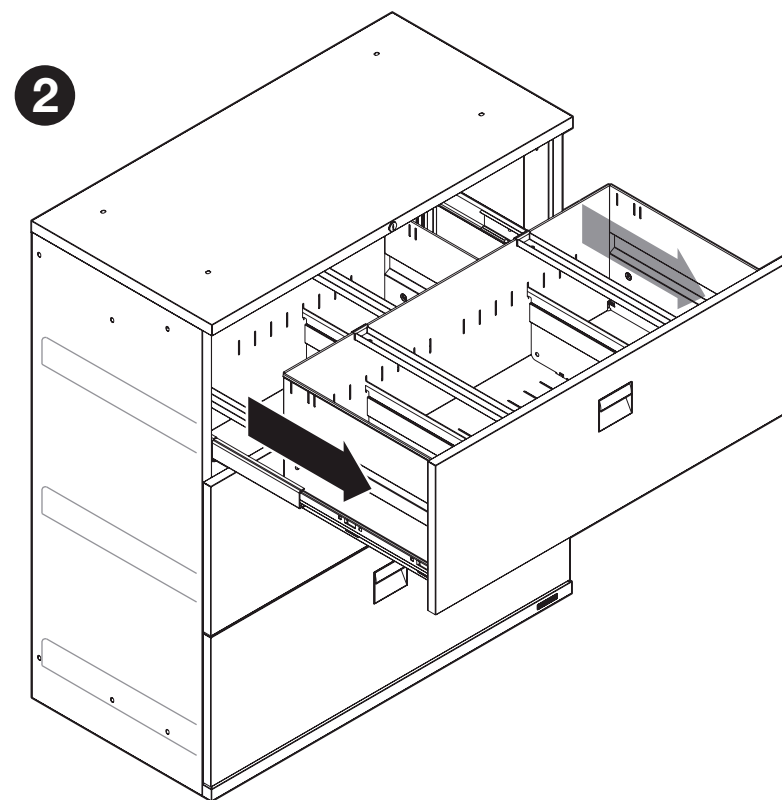
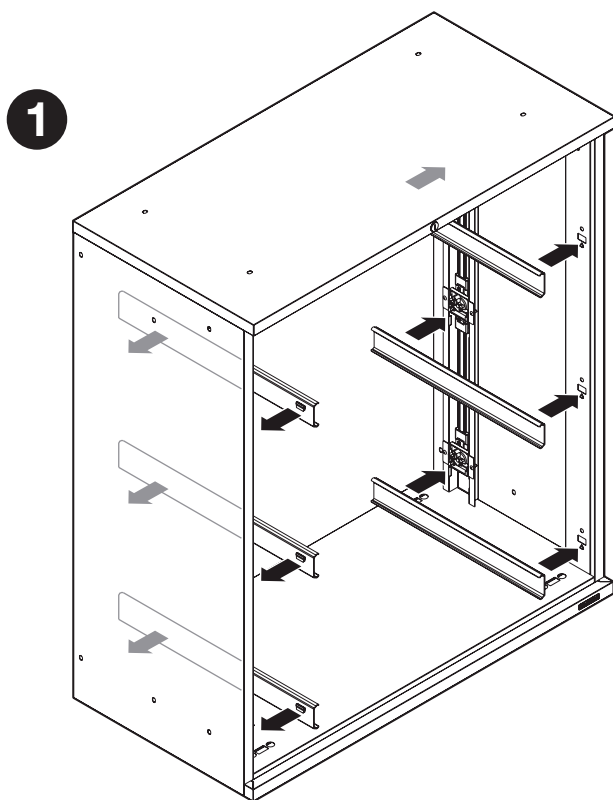
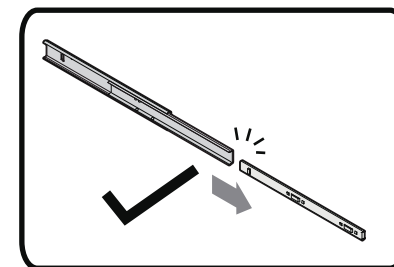
1. Ganging upper to lower cabinets.
2. Ganging side cabinets.
3. Ganging back cabinets.





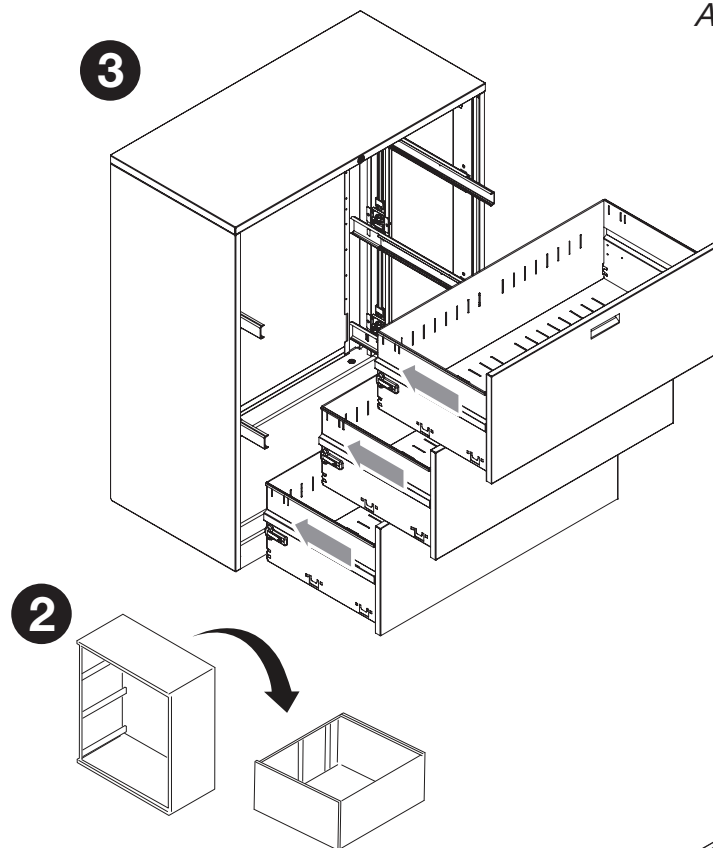
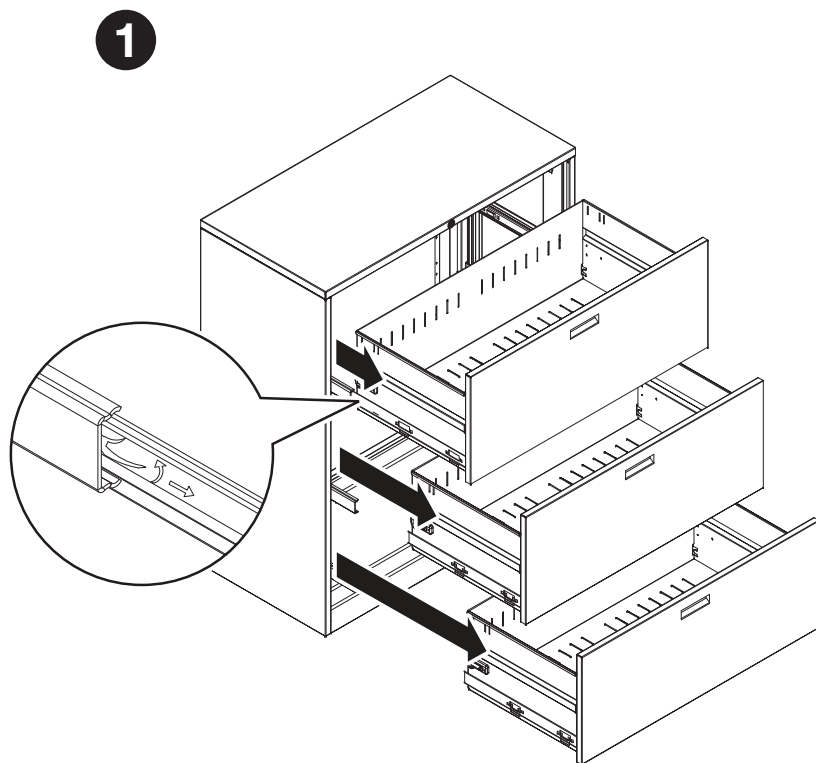
Removable Runner

1. Install the runner at the cabinet.
2. Insert drawer into runner sequentially



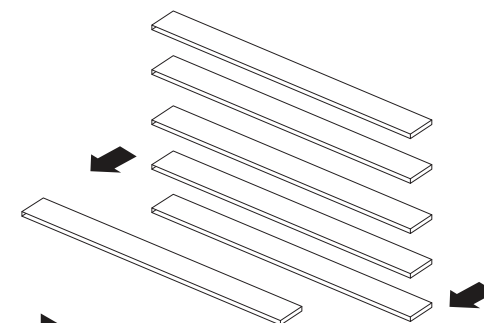
Counter Weight (for drawer cabinet only)

1. Take out the drawer one by one.
2. Slot in the counter weight.
3. Put back in the drawer one by one.

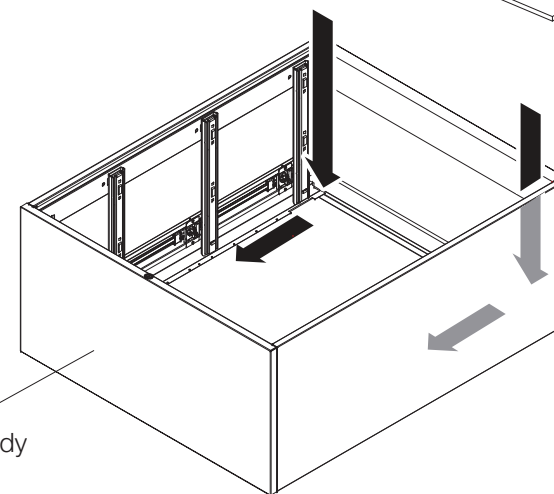


Counter Weight Info:

1. 2H = 7 pcs = 42 kg
2. 3H = 6 pcs = 36 kg
3. 4H = 5 pcs = 30 kg



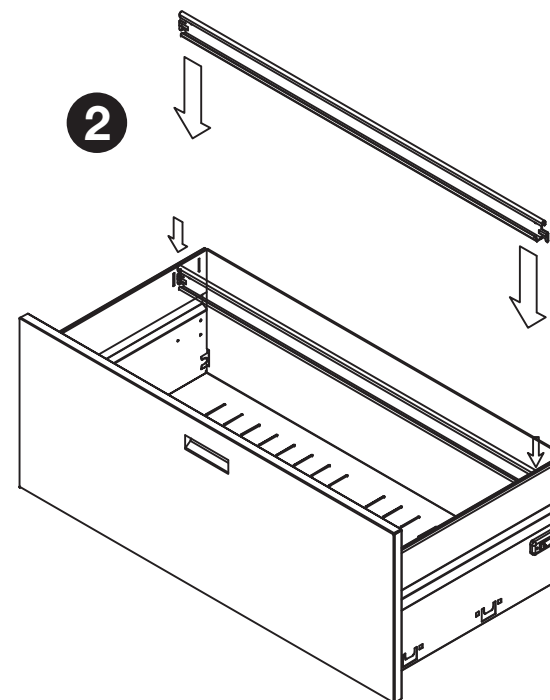
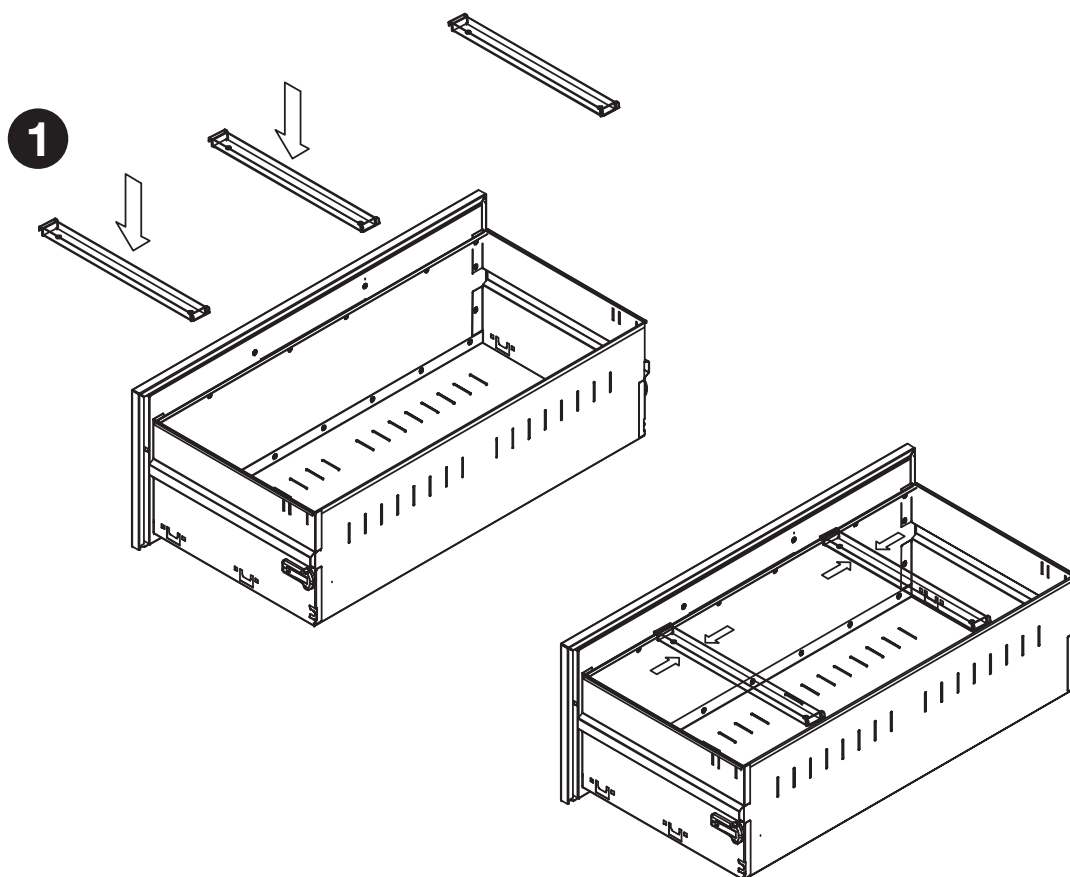
Drawer cabinet body



File Hanger

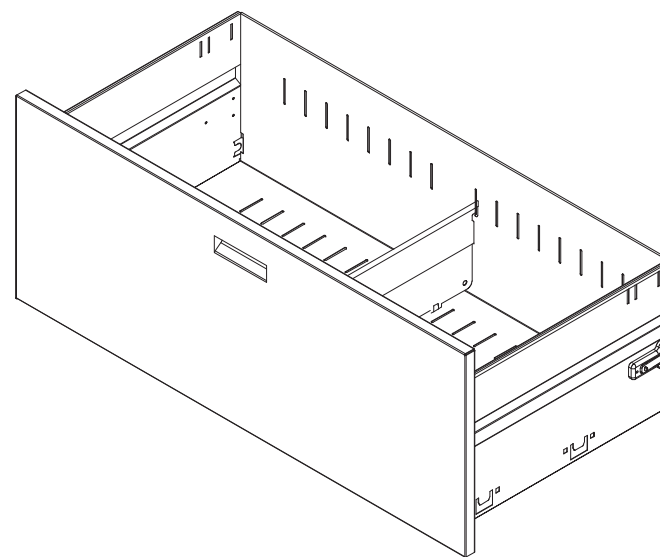
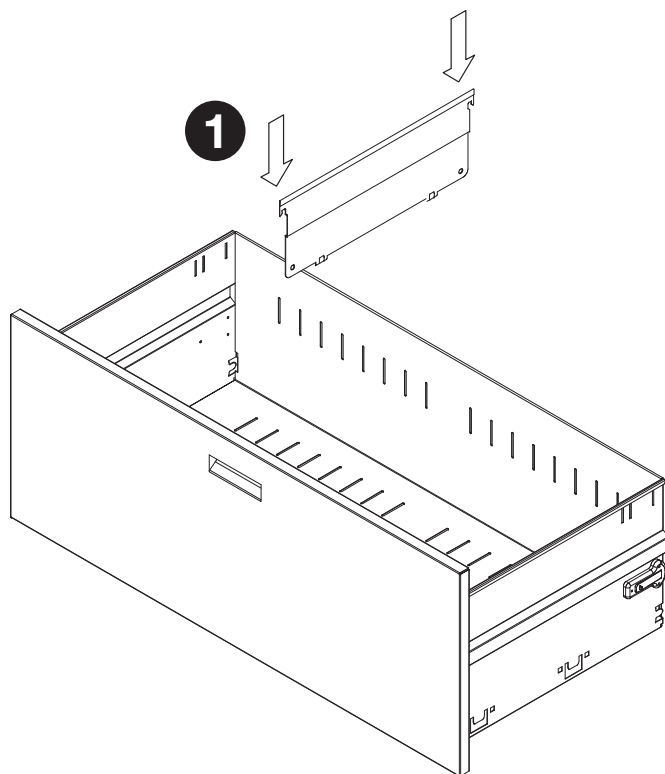
1. Vertical Hanging Rail

2. Horizontal Hanging Rail



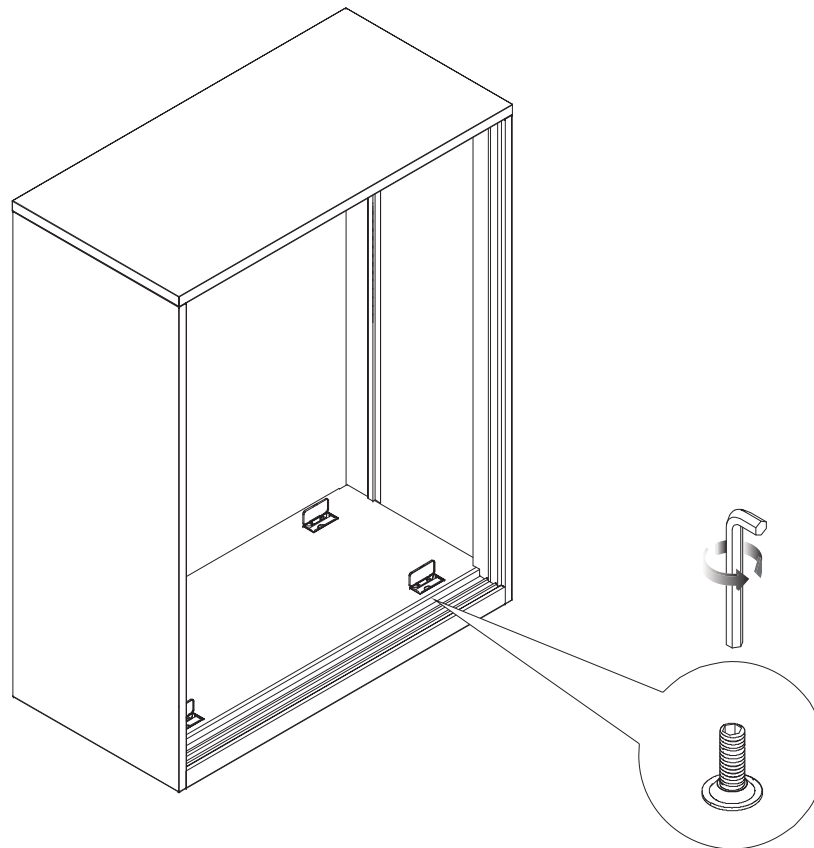
Drawer

1. Fix the drawer divider by slotting into the parallel holes.



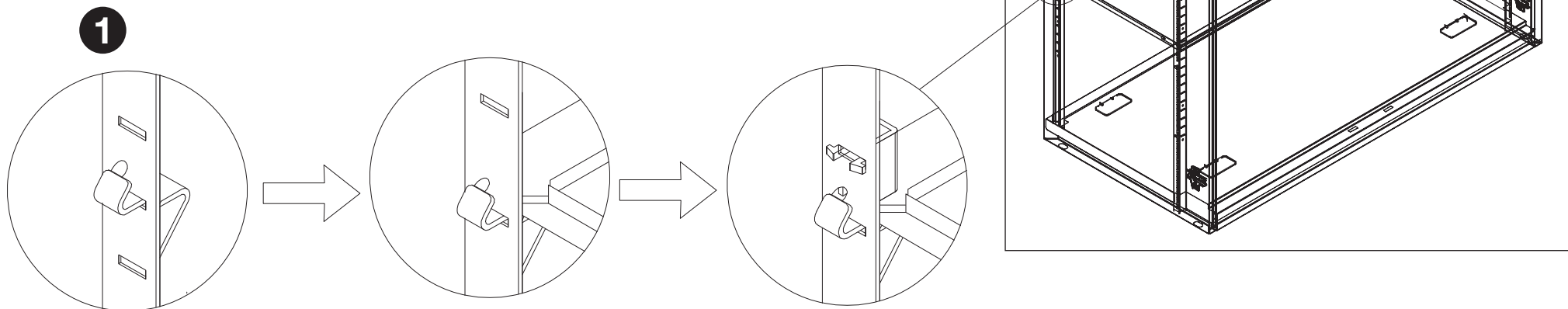
Adjustment Knob

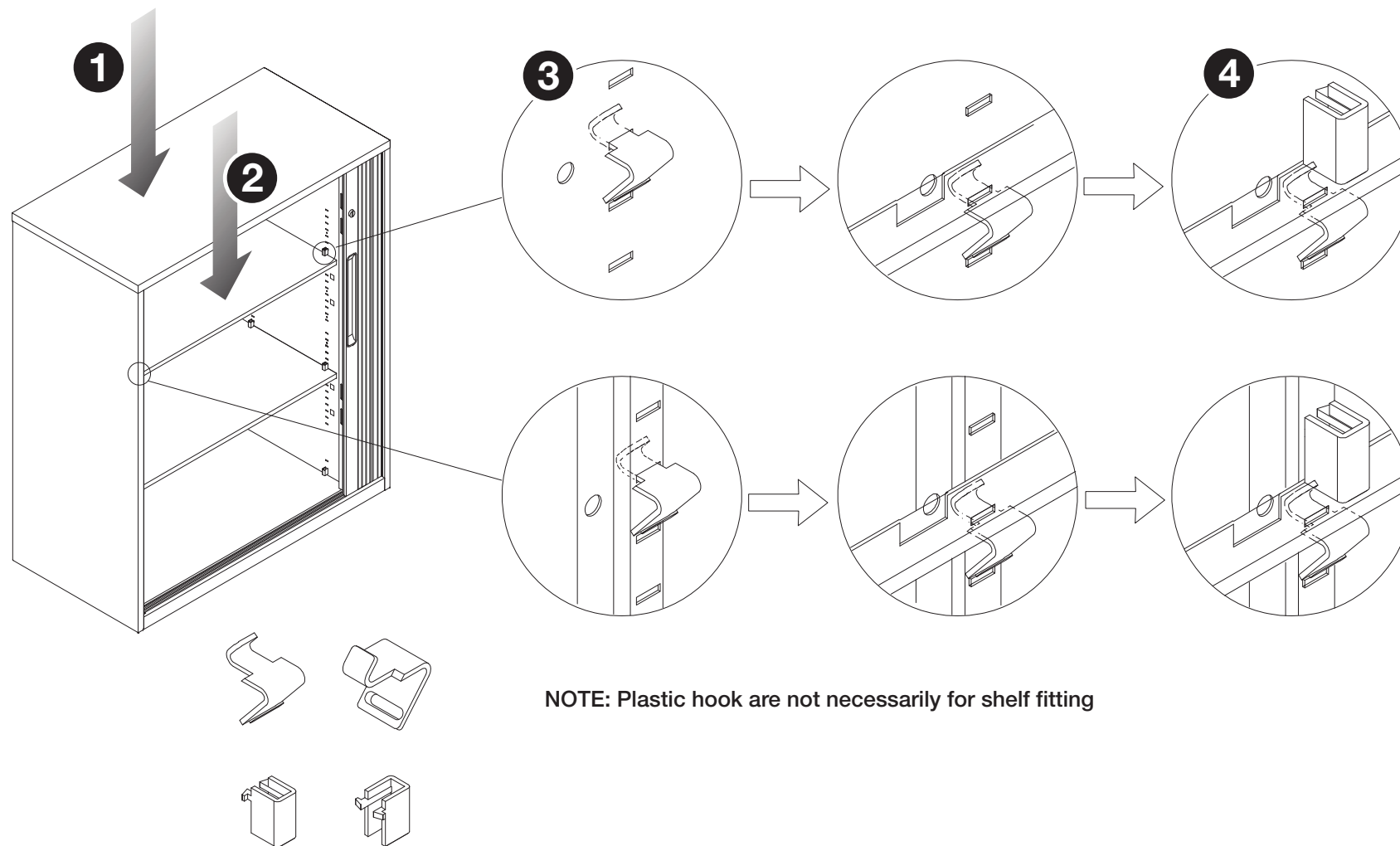
1. Adjust glide for leveling.

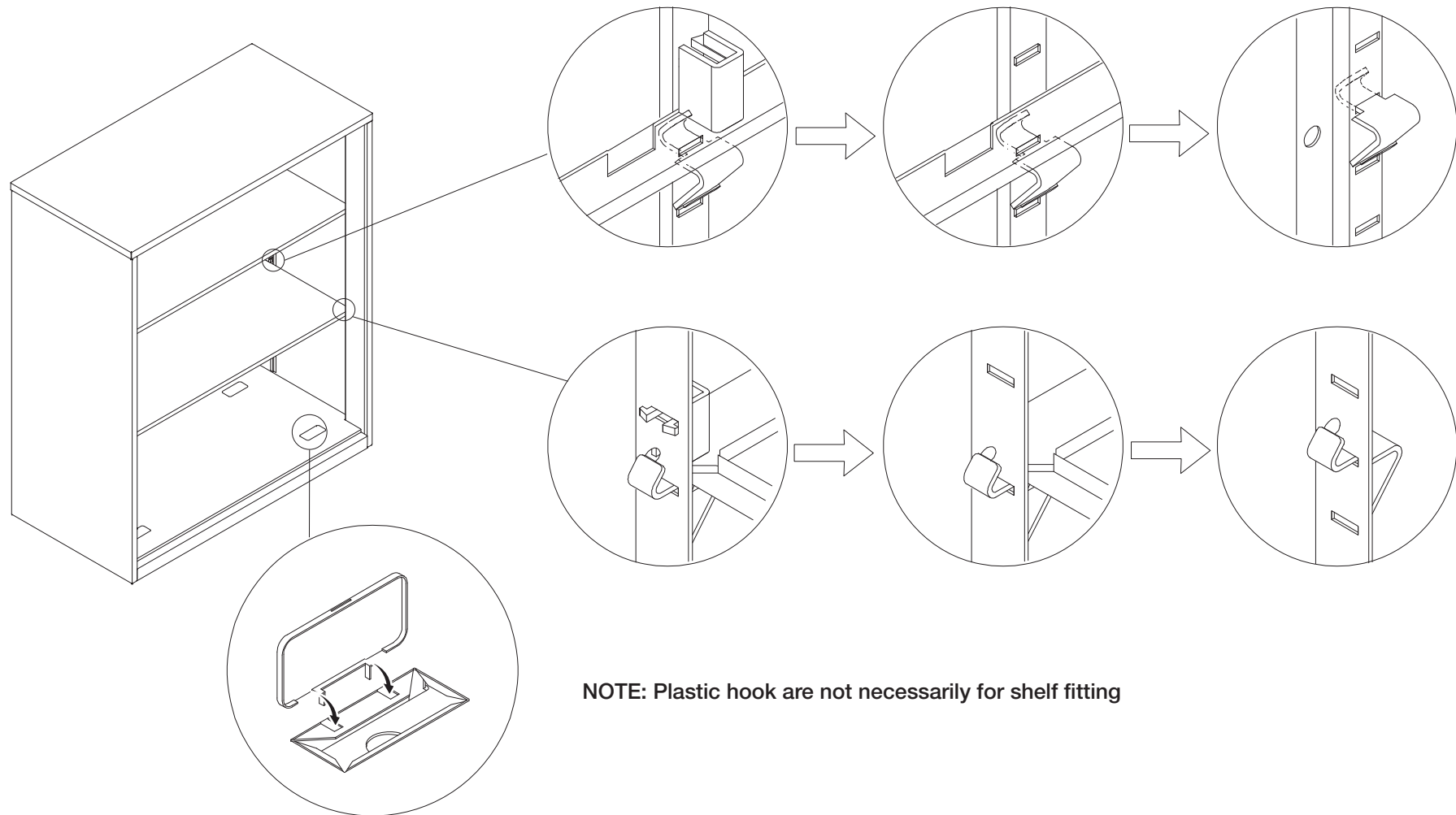


Adjustable Shelf

1. Insert all four brackets in position as shown.
2. Place shelf on top of the brackets.

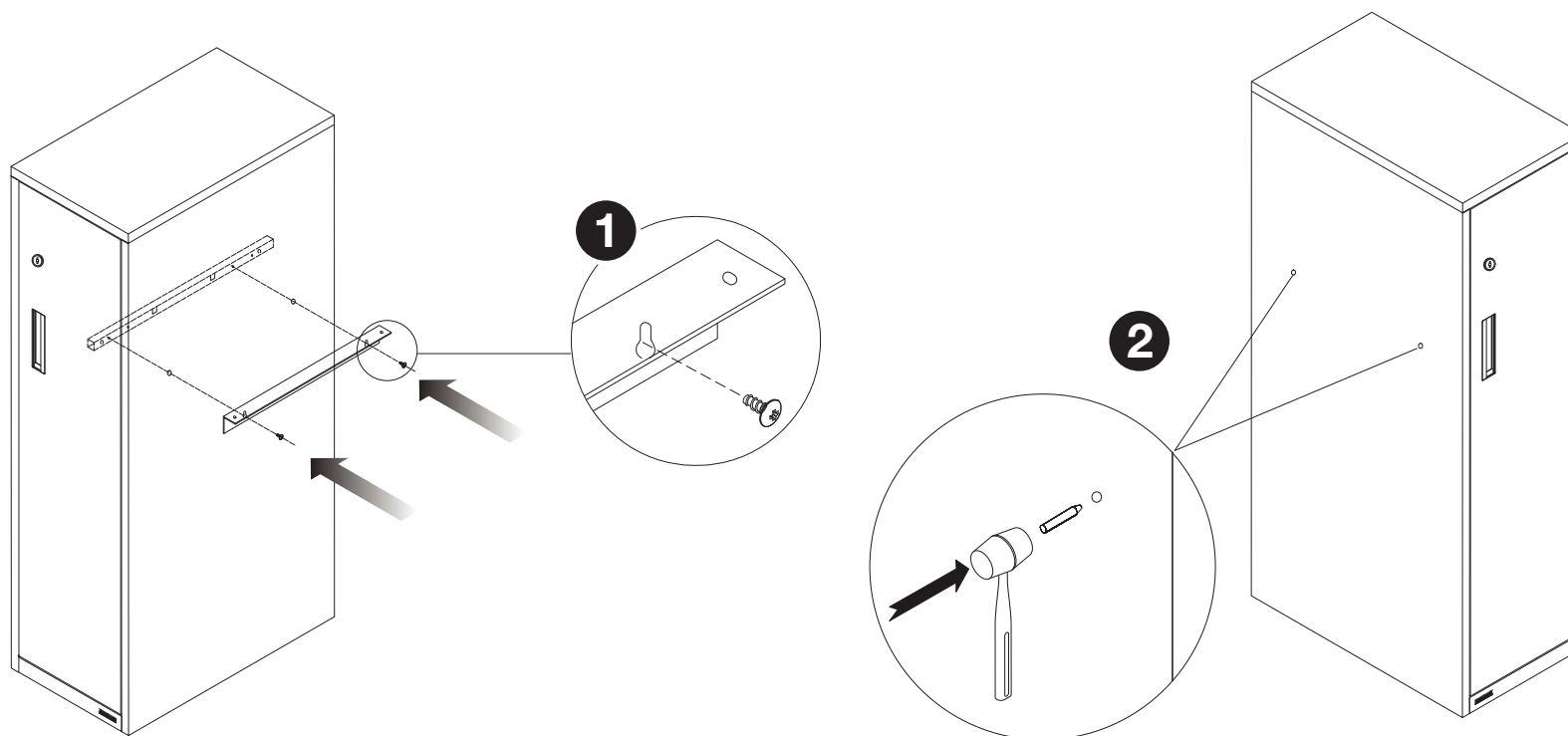






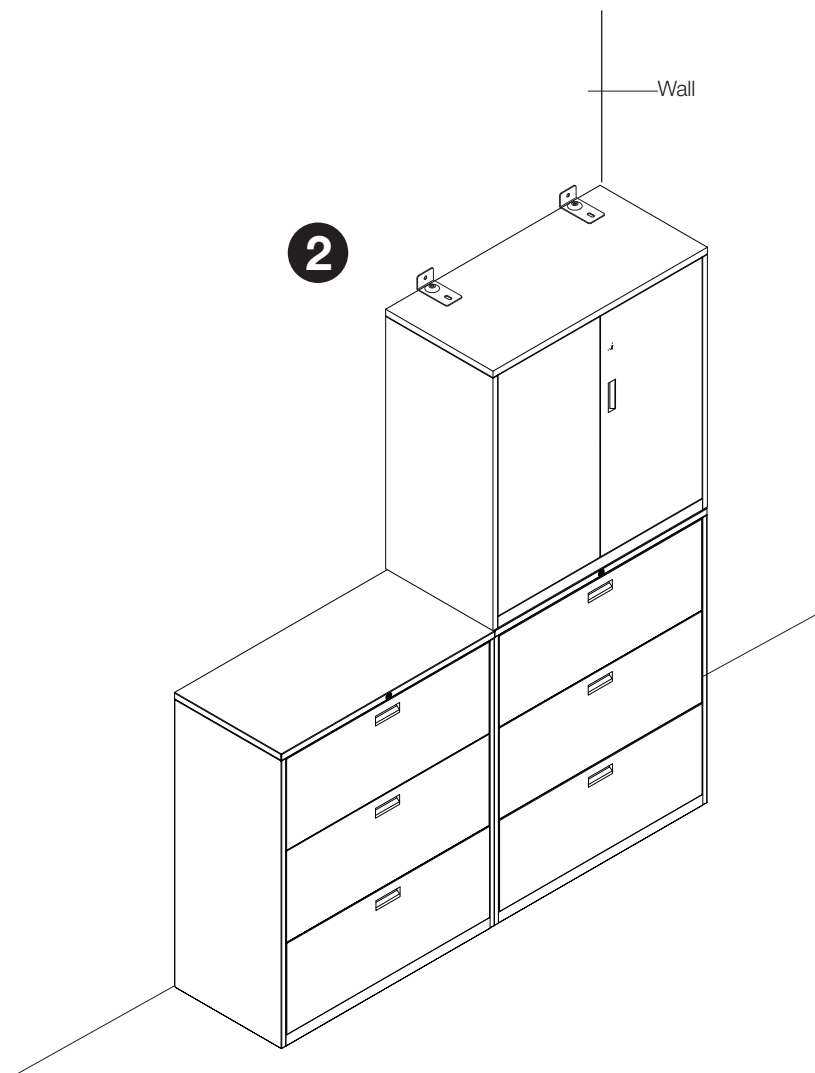
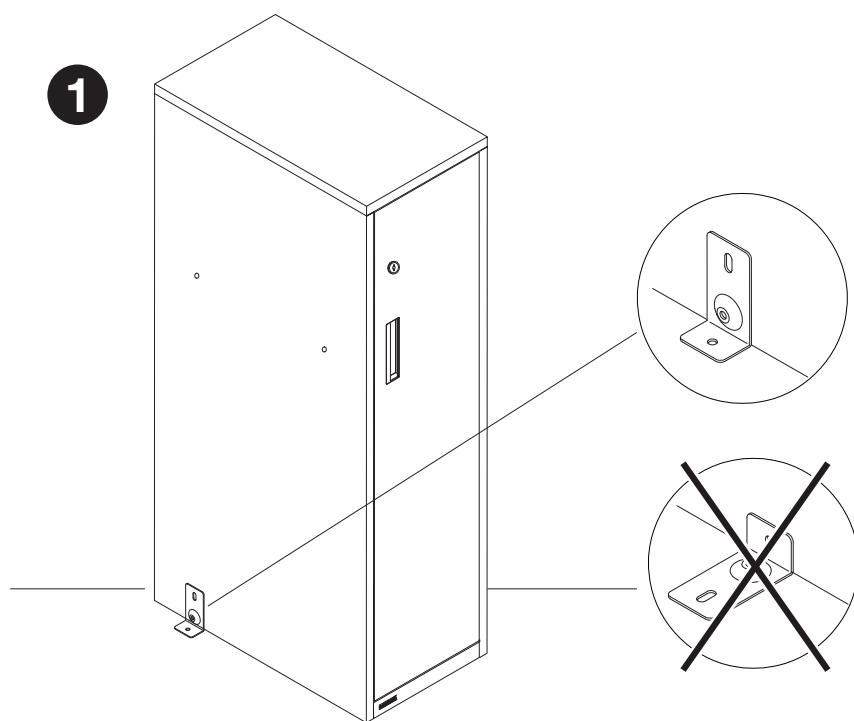
Side Bracket

1. Screwed the bracket to the side panel.
2. Knock out the pre-cut holes with mallet (either left or right side).



Floor and Wall Mount

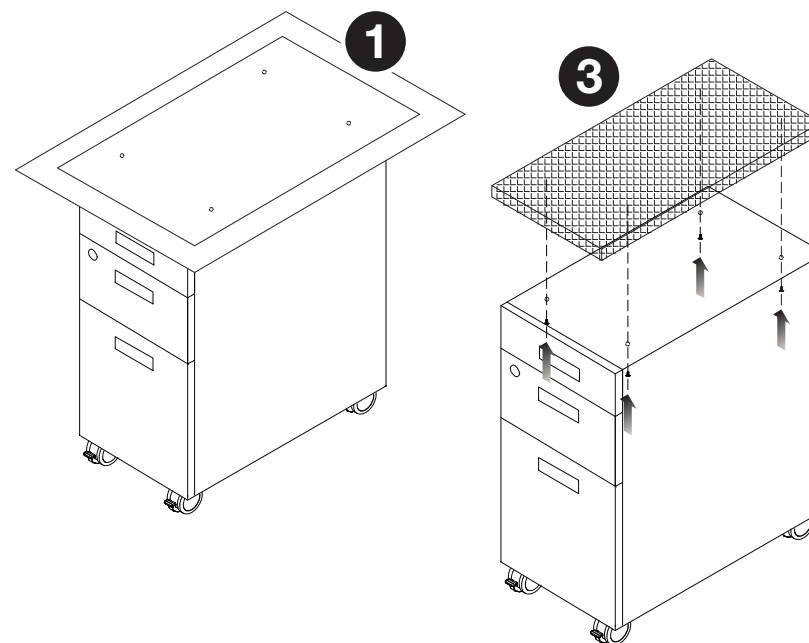
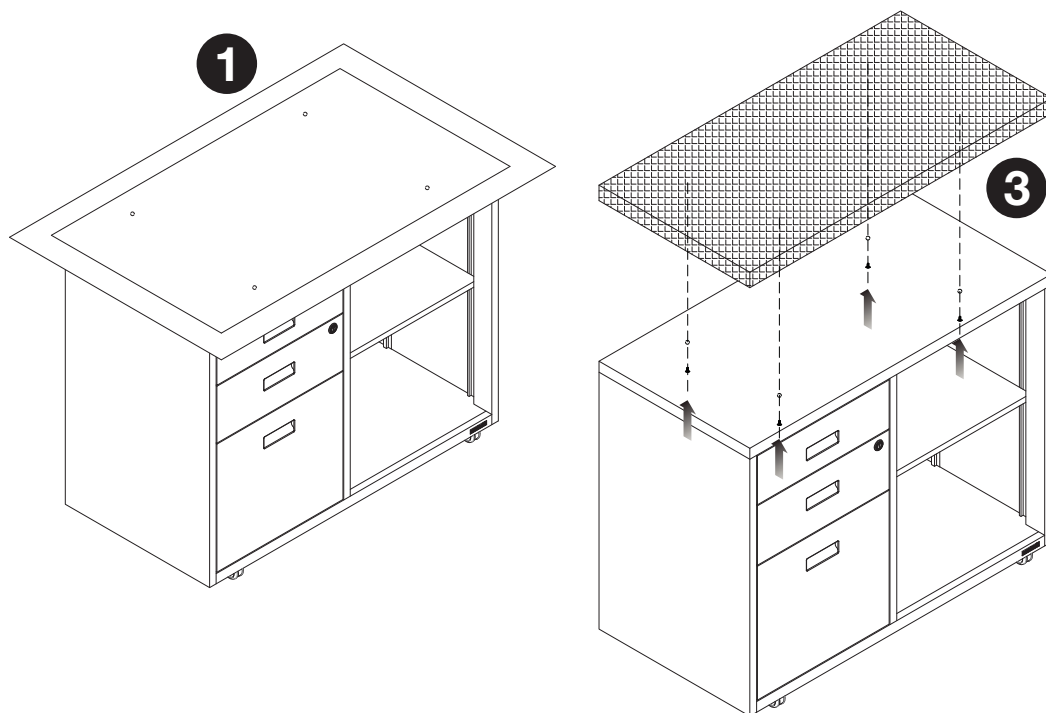
1. The longer part must attach to cabinet body because the cabinet bottom structure will block the screw.
2. Advisable the longer bracket hook with cabinet and short bracket side mount with wall.



NOTE: All cabinets 1810mm H or higher should be bolted to a wall with the wall attachment brackets.

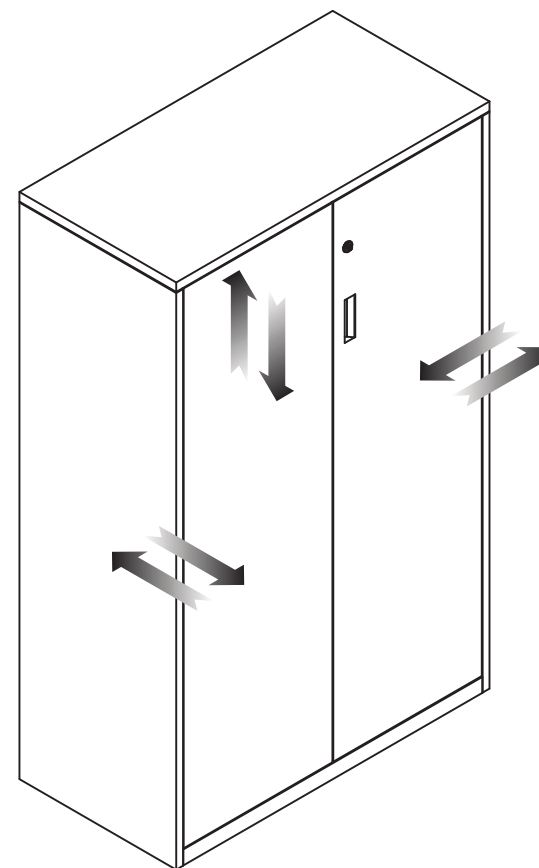
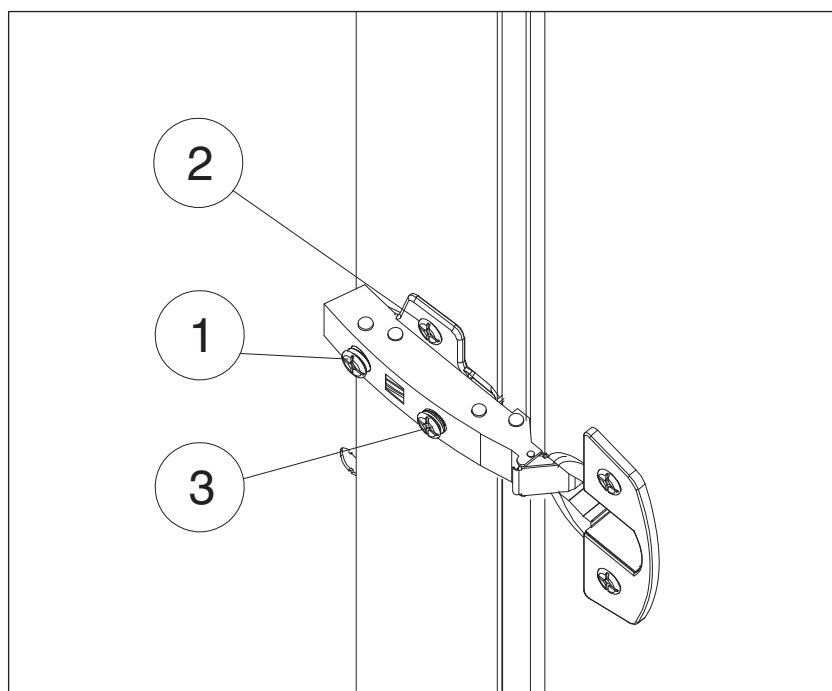
Cushion Top

1. Drill holes from top with attached template guide.
2. Unload the drawer.
3. Tight the cushion top with screws
4. Put back the drawers one by one.



Door Adjustment

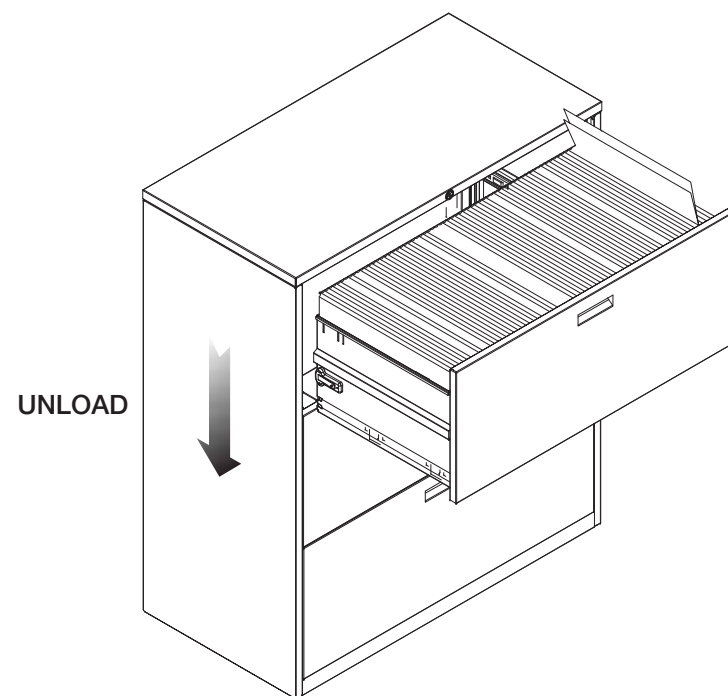
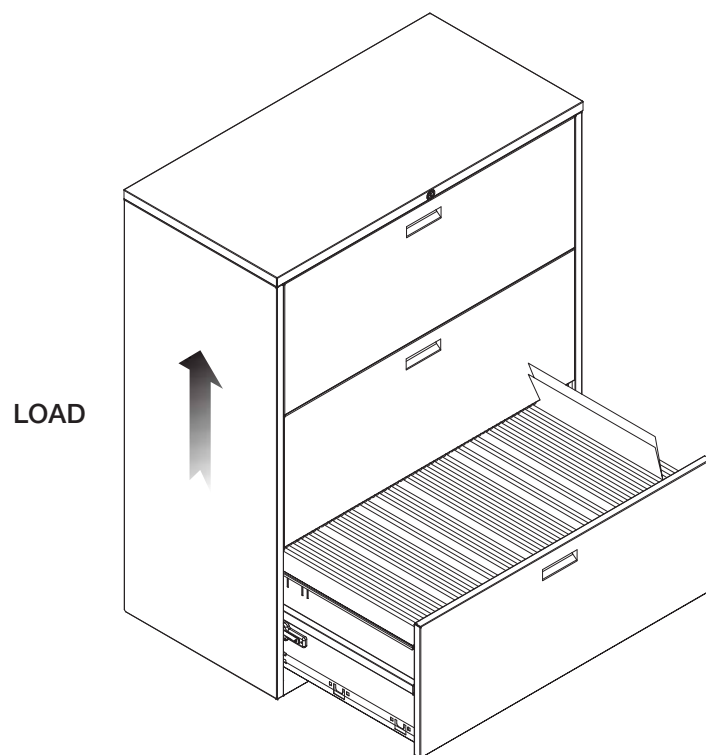
1. Adjust screw to move the door to left or right (movement 'a')
2. Adjust screw to move the door forward or backward (movement 'b')
3. Adjust screw to move the door up or down (movement 'c')



Loading and Unloading Files

Note:

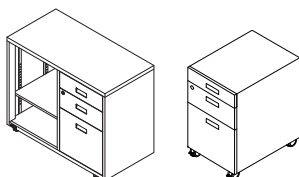
1. Always load the drawers from bottom upward.
2. Always unloading the drawers from top downward.



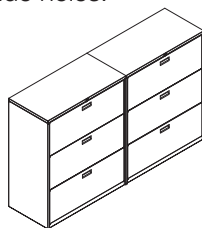
⚠ CAUTION

FOLLOW THESE INSTRUCTIONS TO PREVENT CABINET FROM TIPPING OVER AND CAUSING PERSONAL INJURY. THESE INSTRUCTIONS APPLY TO ALL FILES. DO NOT REMOVE THIS LABEL.

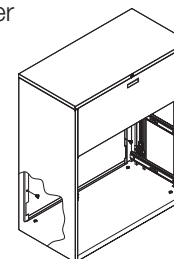
1 Mobile Pedestal & Caddy Pedestal must install with counter weight to prevent tip off.



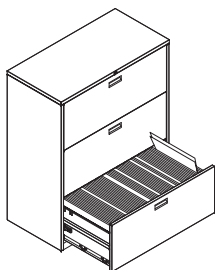
2 Gang cabinets together side-to-side, back-to-back or top-to-bottom can refer to top plate guide holes.



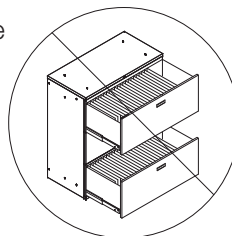
3 If lateral cannot be ganged or mounted under a worksurface, a counterweight package must be installed.



4 Load lower openings with heavier material first. Distribute weight within each opening evenly. Do not move cabinet or adjust glides with loaded roll-outs. Do not lift unit by its tops.



5 The interlock system prevents more than one roll-out from opening at a time. Do not try to force open more than one roll-out at a time.



6 When loading with materials, refer to maximum loading capacity on each shelf or drawer types to prevent any accident or damage of product.

Lateral	40kg	Pen Drawer	2kg
Single Hinge Door	20kg	Box Drawer	7kg
Hinge Door	36kg	File Drawer	15kg
Sliding Door	36kg	Caddy Shelf Loading	12kg
Tambour Door	36kg	Cushion Top	85kg
Open Door	36kg	Max loading	