

New Scandinavian Design by Hertel & Klarhoefer, kaschkasch, Meike Harde, Sonderlin Design, Joa Herrenknecht, Büro Famos, Kressel & Schelle, Vogel Studio, Busetti Garuti Redaelli, Metrica, Laura Grebner, Meike Langer, Yonoh Estudio, Bao-Nghi Droste, Glismand & Rüdiger, Michael H. Nielsen, Nordvink, Rikke Hagen, Sara Polmar, Allan Nøddebo, Anna & Signe, Halskov & Dalsgaard, Henrik Sørig Thomsen, Isabel Ahm, Steffensen & Würtz, Tine Ottesen Stride, Rikke Frost, Vera & Kyte, Morten & Jonas, Engvall-Moen, Sanna Völker, Sebastian Alberdi, MUT Design Studio, Álvaro Díaz Hernández, Kutaraq Studio, Ramos Bassols, Denis Guidone, Studio Schrofer, Earnest Studio, David Derksen, Kateryna Sokolova, Studio Gud, Studio AC/AL, Laurent Batisse, 201 Design Studio, Dazingfeelsgood, Outofstock, Martin Caneda, Scott Fitzsimons, Simon Morasi Piper, Kenyon Yeh, Maija Puoskari & Tuukka Tujula, e-ggs, Umit Caglar, Caurier & Gonçalves, Studio Lorier, Normal Object Factory, Erika Cross, Diiis Designstudio, jüngerkuhn, VOSDING Industrial Design, Christine Rathmann, Anna Weber, Studio Terhedebrügge, Tiel Studio, BÖTTCHER & KAYSER, and many more creative friends.

Steelcase
×
Bolia.com

They say home is where the heart is.

A sanctuary from the humdrum of the world. Four walls that give us comfort and let us find peace of mind. A space for creativity and love to unfold.

But our home is so much more than that. It is a village, a city, a planet. Beautiful, diverse and fragile just like us.

No one lives like you.



20

Collection





Together, Steelcase and Bolia are on a journey to transform office landscapes around the globe into creative, inspiring places to work, because after all, a modern workspace is more and more about combining spheres and blurring the lines between work and private life.

Dive into the Steelcase x Bolia collection and experience atmospheres built on warmth, and bold luxurious materials – a design portfolio, offering exciting design options born out of our Scandinavian heritage.



Swing Chair Designed by Henrik Sørig Thomsen

Yacht Table

Designed by Glismand & Rüdiger

When exceptional effort is put into wood crafting and combined with a Scandinavian sensibility the results are bound to be stunning. This understated table is the design worlds answer to the humble brag.



Scandinavia Remix Sofa Series

Designed by Glismand & Rüdiger

Scandinavia Remix is a modern design icon created by Glismand & Rüdiger. The sofa's frame is made from solid, sustainable wood, and the cushions that are upholstered on both sides extend the sofa's life for many years. Under the slim cushions, you'll find high-quality lining and a sloping design that holds the cushions firmly in place. It's up to you whether you want your Scandinavia Remix to be covered with soft velour, classic leather, recycled cotton, or another of our numerous furniture fabrics. The result is a classic sofa, where every tiny detail is precisely considered and executed.



Scandinavia Remix 2½-seater in Novel, Green*. Designed by Glismand & Rüdiger. Piper Lounge Pendant 3-arms**
Designed by 365° North. C3 Armchair in Mira, Terra. Designed by Glismand & Rüdiger. Zyl Pouf. Mega Floor Cushion.
*Novel fabric is only available in the US. **Lamps are only available in EMEA.

New Scandinavian Design by Hertel & Klarhoefer, kaschkasch, Meike Harde, Sonderlin Design, Joa Herrenknecht, Büro Famos, Kressel & Schelle, Vogel Studio, Buseti Garuti Redaelli, Metrica, Laura Grebner, Meike Langer, Yonoh Estudio, Bao-Nghi Droste, Glismand & Rüdiger, Michael H. Nielsen, Nordvink, Rikke Hagen, Sara Polmar, Allan Nøddebo, Anna & Signe, Halskov & Dalsgaard, Henrik Sørig Thomsen, Isabel Ahm, Steffensen & Würtz, Tine Ottesen Stride, Rikke Frost, Vera & Kyte, Morten & Jonas, Engvall-Moen, Sanna Völker, Sebastian Alberdi, MUT Design Studio, Álvaro Díaz Hernández, Kutaraq Studio, Ramos Bassols, Denis Guidone, Studio Schrofer, Earnest Studio, David Derksen, Kateryna Sokolova, Studio Gud, Studio AC/AL, Laurent Batisse, 201 Design Studio, Dazingfeelsgood, Outofstock, Martin Caneda, Scott Fitzsimons, Simon Morasi Piper, Kenyon Yeh, Maija Puoskari & Tuukka Tujula, e-ggs, Umit Caglar, Caurier & Gonçalves, Studio Lorier, Normal Object Factory, Erika Cross, Diiis Designstudio, jüngerkuhn, VOSDING Industrial Design, Christine Rathmann, Anna Weber, Studio Terhedebrügge, Tiel Studio, BÖTTCHER & KAYSER, and many more creative friends.

A Design Collective

Behind every single design there is a beautiful and creative mind. At Bolia we collaborate with a brilliant stable of more than thirty talented designers. From the upcoming and vibrant talents to the established design studios and the world-renowned personalities. No matter, in what part of the world they live and breathe – they all share the same passion for Scandinavian design, natural materials and sustainable creations.

And just like the Scandinavian seasons, we're not afraid of change. That is why we give something back to the creative pursuit we all love so much, by inviting the new generation of designers to enter our annual Bolia Design Award. It is a pleasure for us to honor the most creative suggestions, and to give the winners an opportunity to become part of our future design collective. So, we continue to blur the lines of creativity and create the next chapter for New Scandinavian Design.





1.



2.

Vienna Sideboard Designed by Hertel & Klarhoefer.

1. Tuk Coffee Table Designed by Büro Famos. 2. Grape Pendant* Designed by Morten & Jonas.
**Lamps are only available in EMEA.*

Handmade in Europe

Every wonderful design in our collection is made from nature's favorite materials and we are very selective about where and how every sourced material is produced. We don't just want to ensure quality at every turn, we also want to be satisfied with every piece, knowing it comes with a clear conscience, both ethically and environmentally. That's why our furniture designs are handmade by some of the finest craftsmen at certified manufacturers in Europe - and they all come with a 5-year guarantee.



Palm Lounge Chair in Qual, Light Grey Melange. Designed by Says Who.



Cosima Modular Sofa Series

Designed by kaschkasch

The lounge sofa with room for all your dreams, crafted in sustainable materials from the inside out. With a penchant for an exclusive yet practical design, the result is a sofa with wide surfaces and large modules. The robust wooden frame and large modules create the impression of a sofa that both feels soft to the touch and is created to last for many years.



Tune Chair Designed by Henrik Sørig Thomsen.



Kimono Chair

Designed by Pascal Bosetti

For modern Japanese people, the kimono is a symbol of thoughtfulness, grace and respect for tradition, which is exactly where designer Pascal Bosetti has drawn his inspiration for Kimono. The similarities between the chair and its source of inspiration are particularly evident in the seams on the seat, which add both a graphic look and separate the arms and cover from each other – just like a real kimono. Kimono is moulded and will, therefore, hold its characteristic curved shape for many years to come.



Kimono Chair in London, Light Beige. Designed by Pascal Bosetti.



1.



2.

1. Lean Shelf Designed by Allan Nøddebo. 2. Quadro Shelf Designed by OOOJA.

Como Coffee Table Series

Designed by Glismand & Rüdiger

Simplicity and elegance are shaped and brought to life in various materials and sizes that unite Danish craftsmanship and Scandinavian design. Como features a table top in various organic materials such as solid oak, walnut, laminate, glass, marble and concrete and is available in different sizes and heights, enabling you to blend two together, create a unique material mix or focus on one material in a single colour. It's entirely up to you.





1.



2.

1. Sleek Chair Designed by Says Who. 2. Vitro Coffee Table Designed by Granstudio.



DT Series

Designed by Glismand & Rüdiger

The DT18 is a table of the highest quality. The solid table top made of solid wood can be extended to 330 cm, making it suitable for large meeting rooms. The legs are positioned on the outside to create more legroom and are assembled with mortise-and-tenon joints - a carpentry technique that emphasises the superior quality of this extravagant table.





Floow Sideboard Designed by Michael H. Nielsen.



Aura Sofa

Designed by Charlotte Høncke

Aura is a light and elegant sofa with neat stitching that shapes both the seat and back cushions in a geometric design language, creating a playful and inviting appearance. The high armrests and back cushions that frame Aura are upheld by the slender yet robust metal frame, creating a sharp contrast and adding a little extra edge to the design and your office.







New Mood Round & Square Table Designed by Michael H. Nielsen. Palm Chair in Novel, Grey Brown.* Designed by Says Who. Balloon Pendant** Designed by Meike Harde.

*Novel fabric is only available in the US. **Lamps are only available in EMEA.



New Mood Round & Square Table Designed by Michael H. Nielsen. **Palm Chair** in Novel. Grey Brown*. Designed by Says Who. **Balloon Pendant*** Designed by Meike Harde.
**Novel fabric is only available in the US. **Lamps are only available in EMEA.*



Orb Floor Lamp* Designed by 365° North.
**Lamps are only available in EMEA.*

North Sofa Series

Designed by Glismand & Rüdiger

North is an exclusive sofa series, where you can feel the focus is on attention to details. Both the ones you can enjoy with the naked eye, but also those that are hidden inside the construction – the ones that distinguish a good sofa from an outstanding sofa. North belongs to the latter category. All choices have been made with respect for the environment and excellent craftsmanship. That's why the cushions are filled with genuine down, the wooden legs are crafted in solid wood, the armrests and frame filled with extra padding, the cushions are reversible and all materials are sustainable.



North 2½-seater Sofa in London, Dust Green. Designed by Glismand & Rüdiger. **Classic Cushion***. **Zyl Pouf Ø50** in London, Light Beige. **Zyl Pouf Ø70** in London, Light Grey. **Zyl Pouf Ø90** in London, Multi Grey.

**Not available in the UK.*

A Sustainable Choice

Sustainability is the starting point for every new product. All the way from the design to the materials, packaging, transportation and to the final piece, we are making many sustainable decisions. But the one we believe matters the most is designing beautiful products that are built to last for many years.

But we don't stop there. All Bolia wood is FSC certified and adheres to the EU timber regulation, securing the highest quality and sustainable foresting together with sound working conditions. Our leathers and fabrics also take good care of Mother Earth. Just like our rugs do - they are labelled with the Care and Fair-mark, securing proper schooling and medical care in production countries. Some of our manufacturers even use solar power to run their production facilities and dyeing water is reused.

We are on a thrilling and sustainable journey. Every day we make new sustainable choices - all the way from the beautiful minds of our designers to the coffee we serve in our stores.





1.



2.



3.

1. **Balloon Pendant*** Designed by Meike Harde. 2. **Cosh Low Armchair** in Quattro Traceable Leather, Cognac. Designed by Kateryna Sokolova. 3. **Hug Chair** in London, Sea Green. Designed by Hertel & Klarhoefer.
**Lamps are only available in EMEA.*



New Mood Series

Designed by Michael H. Nielsen

The New Mood collection contains tables, coffee tables and chairs, which are all available in a variety of carefully selected wood types and laminate colours. Designed by Michael H. Nielsen, the collection was inspired by 50's design, yet the creator has added modern characteristics such as the combination of wood types that are always present in the legs.



New Mood Round Table Designed by Michael H. Nielsen. C3 Chair in Novel, Cognac*. Designed by Glismand & Rüdiger.
*Novel fabric is only available in the US.



1.



2.



1. **Island Coffee Table** Designed by Umit Caglar. 2. **C3 Chair** in Novel, Cognac*. Designed by Glismand & Rüdiger.
**Novel fabric is only available in the US.*



Palm Lounge Chair Designed by Says Who.



New Mood Round Table Designed by Michael H. Nielsen. **New Mood Chair** Designed by Michael H. Nielsen.



Caisa Modular Sofa Series

Designed by BÖTTCHER & KAYSER

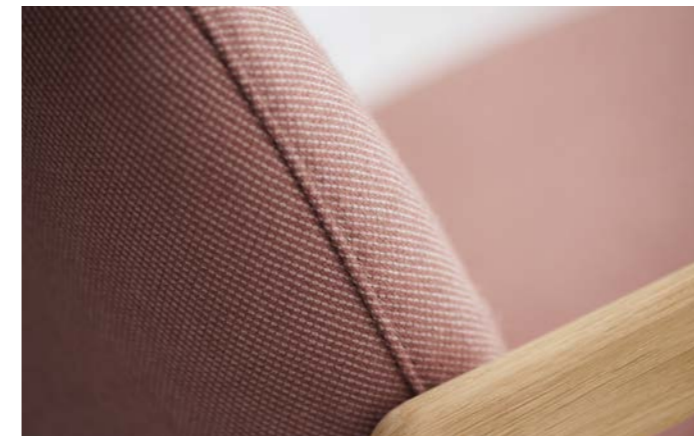
Caisa is a modular sofa with a refined and elegant look. The simple silhouette and unique details of the design have references to the very essence of Scandinavian design. The minimalist look is reinforced by elegant legs that create a luxurious weightlessness for the voluptuous modules. The armrest cushions are available in two depths, which divide the sofa into different sections and seating areas, and this flexibility and spaciousness make the modular sofa ideal for any office, hotel or lobby.



Cosh Armchair Series

Designed by Kateryna Sokolova

With its refined, geometric lines and soft organic forms, the Cosh armchair makes an iconic addition to any room. Cosh is made of solid, sustainable wood and the chair is moulded to extend the design's lifetime. The armchair is designed in three different heights; from low lounge chair to comfortable armchair with integrated headrest. Whatever the variant, Cosh's playful yet stylish design makes it an eye-catching piece of furniture.



Cosh High, Medium & Low Armchair Designed by Kateryna Sokolova.

Hannah Sofa Series

Allow us to introduce you to Hannah. She's a flexible, contemporary, comfortable sofa with soft lines and curves, and she comes in different models depending on your mood and need. Change her legs and she'll get another look - almost like a chameleon. So, say hello to ...Hannah.



1.



2.



1. Philippa Armchair in Memory, Grey/White. Designed by Busetti Garuti Redaelli. 2. Piper Lounge Pendant* Designed by 365° North. *Lamps are only available in EMEA.

Hannah 6-seater Corner Sofa with Open End in Quail, Sand. Philippa Armchair in Memory, Grey/White. Designed by Busetti Garuti Redaelli. Classic Cushion*. Pod Coffee Table. Piper Lounge Pendant & Floor Lamp**. *Not available in the UK. **Lamps are only available in EMEA.

Philippa Sofa Series

Designed by Busetti Garuti Redaelli

A modern, Nordic expression meets 1950s classic design. The design group Busetti Garuti Redaelli has created the Philippa series with a sleek, organic form that makes it an elegant and comfortable choice for your reception or office space.



Hannah 3-seater Sofa in Ritz, Light Rosa*. **Classic Cushion****.
**Ritz fabric is only available in EMEA. **Not available in the UK.*



Philippa 2-seater Sofa & Armchair in London, Mint and Baize Dust Green. Designed by Busetti Garuti Radaelli. **Loop Rug**.

Saga Armchair

Designed by Anna & Signe

The Saga Armchair makes a slightly selfish addition to your office, as its incredible comfort and welcoming expression means you really won't want to share Saga with anyone at all. Saga has a moulded design, which means the seat cushions and backrest won't change shape over time. Saga is an incredibly beautiful piece of furniture that is pleasing to the body, mind and conscience and which finds its own way back to its place in the office with one graceful movement.





1.



3.



2.

1. **Saga Armchair** in London, Light Grey. Designed by Anna & Signe. **Orb Floor Lamp*** Designed by 365° North. 2. **Grape Pendant*** Designed by Morten & Jonas. **Pont Shelf** Designed by AC/AL Studio. 3. **Pepe 2-seater Sofa & Armchair** in Baize, Grey. Designed by kaschkasch. **Grape Floor Lamp*** Designed by Morten & Jonas. **Mera Side Table** Designed by Kenyon Yeh.
**Lamps are only available in EMEA.*

Abby Sofa Series

Designed by Outofstock

Round yet sharp. The design group Outofstock has designed a simple sofa on a minimalistic and stylish frame that is softened up and given a unique look with the organic round shapes on the back and armrests.



Abby 3-seater Sofa & Armchair in London, Grey Brown and Quattro Traceable Leather, Ice. Designed by Outofstock. Bossa Rug.

Liva Sofa Series

Designed by Charlotte Høncke

The Liva Sofa is a sofa that stands out from the crowd. There are clear references to 50s style and a touch of "Gentleman's Club" with the characteristic wings, high back and striking lines. But Liva is in a class of its own. It invites you to sit down and have a cosy chat.



Liva 3-seater Sofa & Armchair in London, Light Grey. Designed by Charlotte Høncke. Drum Coffee Table Designed by kaschkasch.

Orb Lounge Pendant* Designed by 365° North.

*Lamps are only available in EMEA.



Graceful Table

Designed by Michael H. Nielsen

The designer Michael H. Nielsen designed Graceful based on the idea of 'less is more'. And this can clearly be seen and felt. The level of detail is kept to a minimum to allow the table to speak its own distinct language. The worktop has an unbroken surface to emphasise the clean appearance, but a comprehensive technical knowledge is concealed beneath the surface, which is necessary when such a stringent table is to function successfully in practice. Graceful is made from solid, FSC-certified oak and produced in a green factory where everything is either recycled or reused.



Graceful Table Designed by Michael H. Nielsen. **Palm Chair** in Qual, Light Grey Melange. Designed by Says Who. **Balloon Pendant*** Designed by Meike Harde.
**Lamps are only available in EMEA.*



2.

1.

1. **X-Stool** Designed by MUT Design Studio. 2. **Valby Chair** Designed by Glismand & Rüdiger.

Tune Chair

Designed by Henrik Sørig Thomsen

Tune means to correct the pitch or adjust, and that is exactly what Tune does - in both form and function. The idea behind the design is simple; to create a chair that releases space in a room instead of consuming it. The chair's slim and elegant frame with durable construction means the Tune Chairs have the unique ability to be stacked.



Built to Last

Sustainability is the starting point for every new piece. All the way from the design to the materials, packaging, transportation and to the final product, we are making many sustainable decisions, but the one we believe matters the most is designing beautiful products that are built to last for many years. That is why our furniture designs are made by hand at some of Europe's finest manufacturers and are rigorously tested in collaboration with Bureau Veritas in Germany, the world's leading quality certification agency. Every single design in our collection come with a 5-year guarantee - because they are built from love and built to last.



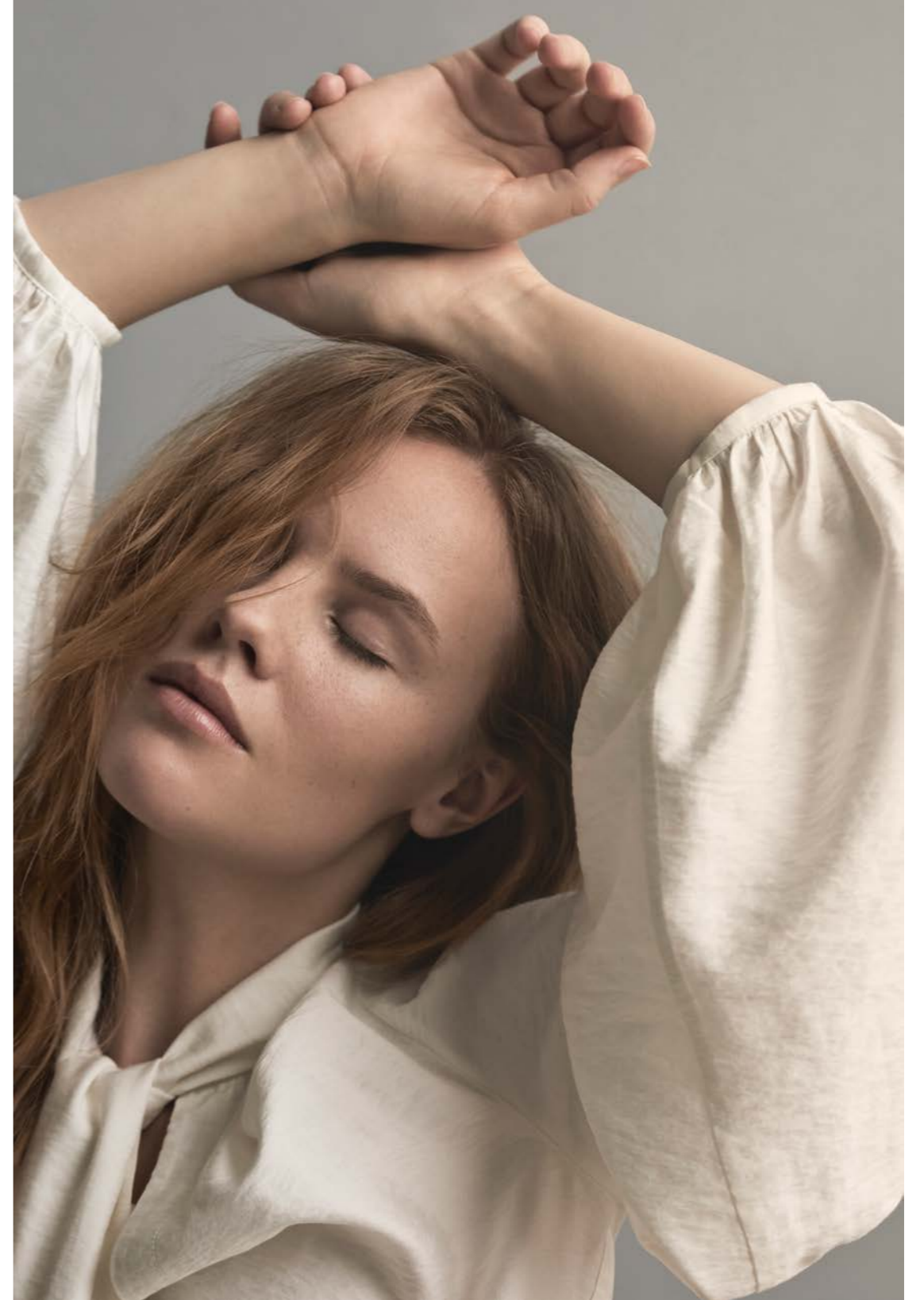


Graceful Table Designed by Michael H. Nielsen. **Kimono Chair** in Ritz, Dark Blue*. Designed by Pascal Bosetti. **Facet Stool** Designed by Allan Nøddebo. **Grape Pendant***. **Pont Shelf**. **Madison 3-seater Sofa** in Ritz, Dark Blue*. Designed by Glismand & Rüdiger. **Mix Coffee Table**. **Loop Rug**.

**Ritz fabric is only available in EMEA. **Lamps are only available in EMEA.*



Soul Lounge Chair Designed by Hertel & Klarhoefer.





Node High Table Designed by kaschkasch. **Facet High Barstool** Designed by Allan Nøddebo.
Comb Coffee Table Designed by Says Who.

No One Lives Like You

Our designs are made for the picky, the choosy, the quality conscious and the socially aware. Because that's our whole philosophy right there; Our designs are tailor-made just for you by some of the finest craftsmen in Europe. You can have each design however you want it, by choosing your favorite model in the perfect size. Made from your preferred sustainable material in the most beautiful fabric and color.

Available in a thousand ways, and that one special way that fits you.
Only you.





North 3-seater Sofa in Bergo, Petrol. Designed by Glismand & Rüdiger. Mix Coffee Table Designed by Studio Gud. Classic Cushion*. Grape Pendant**. Bureau Floor Lamp** Designed by Benny Frandsen.
**Not available in the UK. *Lamps are only available in EMEA.



Fuuga Sofa Series

Designed by Busetti Garuti Redaelli

Fuuga is designed by Busetti Garuti Redaelli with an oval and soft design language inspired by organic shapes. The back is rounded and meets the armrests in a sloped finish, giving Fuuga its distinctive look. The design experience is completed by a balance of stringency, inviting curves and wood craftsmanship in the base as well as the handcrafted details and natural materials.



Fuuga 3-seater Sofa & Armchair in Qual, Sand and London, Light Blue. Designed by Busetti Garuti Redaelli.
Mix Coffee Table Designed by Studio Gud. Rotate Pendant*
**Lamps are only available in EMEA.*

Cloud Sofa Series

Designed by Yonoh Estudio

Simplicity is the keyword in this sofa series designed by Yonoh Estudio. Clean lines are lifted from the ground by a solid metal frame that gives Cloud a minimalistic look while creating a comfortable starting point for you to lean back and hit the pause button for a moment. On the inside, Cloud is constructed in FSC-certified wood, lifting Cloud to all new heights.



Cloud 2½-seater Sofa, Armchair & Pouf in London, Sea Green, Baize, Dust Green and Qual, Sea Green. Designed by Yonoh Estudio.

Move Coffee Table. Grape Pendant*.

*Lamps are only available in EMEA.





1.



3.



2.



1. **Rotate Pendant*** Designed by 365° North. 2. **Grape Lamp Series*** Designed by Morten & Jonas.
3. **Tuk Coffee Table** Designed by Büro Famos.
**Lamps are only available in EMEA.*

Madison Sofa Series

Designed by Glismand & Rüdiger

Madison Avenue during the sixties says it all. Every bit as stylish as an advertising executive but with more honesty, it oozes elegance without selling too hard.

Madison 2½-seater Sofa & Daybed in London, Rosa. Designed by Glismand & Rüdiger. Como Coffee Table Designed by Glismand & Rüdiger. Classic Cushion. Orb Lounge Pendant & Table Lamp*.
*Lamps are only available in EMEA.



1.



2.



3.

1. **Kire Lamp Series*** Designed by Denis Guidone. 2. **New Mood Chair** Designed by Michael H. Nielsen.
3. **Posea Bench** Designed by Granstudio.
**Lamps are only available in EMEA.*



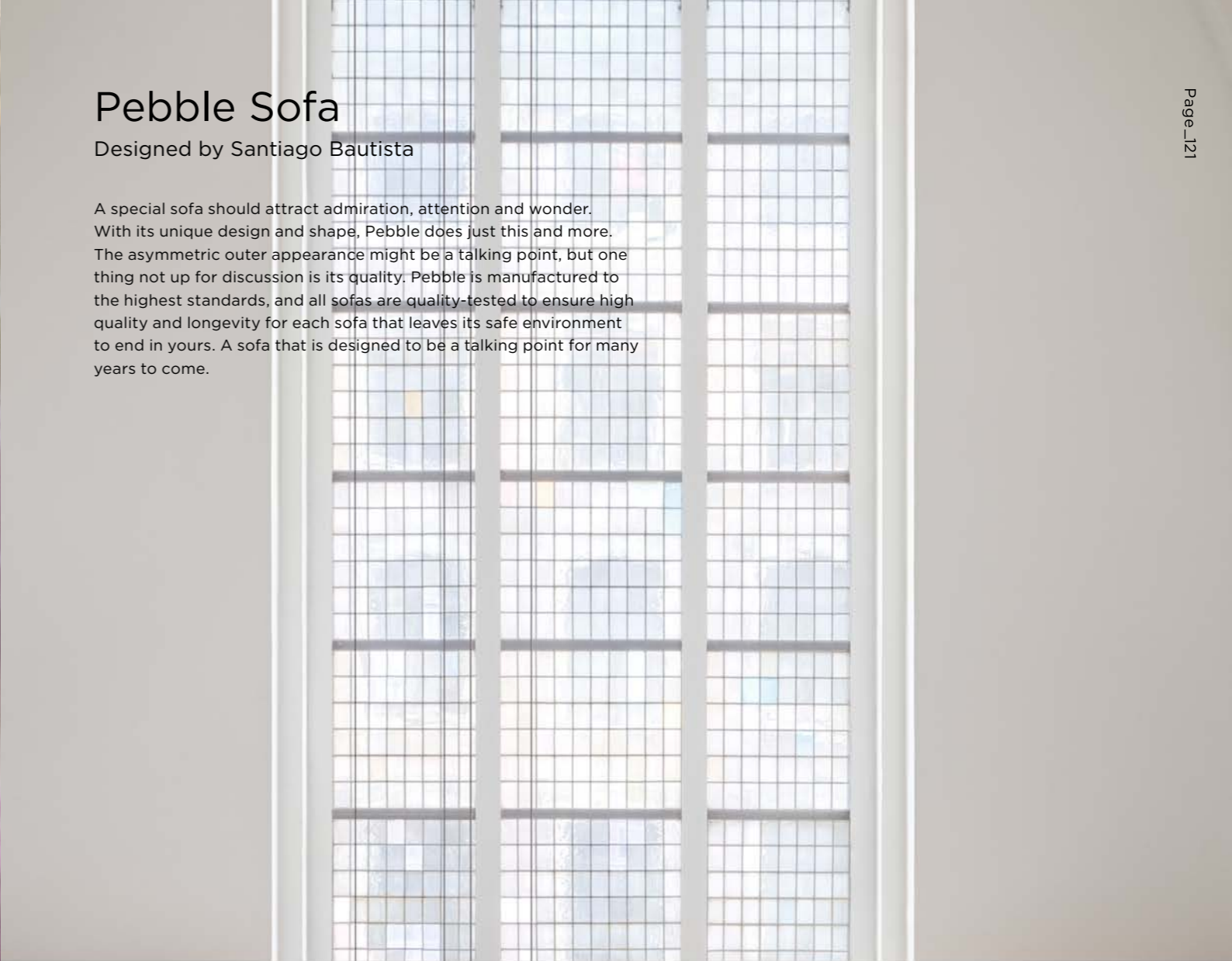
Piper Lounge Pendant 5-arms* Designed by 365° North. **Posea Bench** Designed by Granstudio.
Grab Pouf in Baize, Dust Green and London, Mint. Designed by OOOJA.
**Lamps are only available in EMEA.*



Pebble Sofa

Designed by Santiago Bautista

A special sofa should attract admiration, attention and wonder. With its unique design and shape, Pebble does just this and more. The asymmetric outer appearance might be a talking point, but one thing not up for discussion is its quality. Pebble is manufactured to the highest standards, and all sofas are quality-tested to ensure high quality and longevity for each sofa that leaves its safe environment to end in yours. A sofa that is designed to be a talking point for many years to come.



Pebble Sofa in London, Rosa. Designed by Santiago Bautista. **Orb Solitaire Pendant & Floor Lamp***
Designed by 365° North. **Classic Cushion.**
**Lamps are only available in EMEA.*

Mara Sofa Series

Designed by Kressel + Schelle

Just like the most interesting people, Mara has a personality with many facets. The design is elegant and attractive with a hard exterior, while the inside is inviting and soft. This is the kind of sofa you would like to lounge on all day long. You can easily end up spending a few hours on it simply relaxing, doing absolutely nothing.



Mara Armchair & 2-seater Sofa in Laine, Dark Blue and London, Multi Grey. Designed by Kressel + Schelle. **Posea Side Table** Designed by Granstudio. **Classic Cushion. Piper Lounge Pendant 5-arms***. **Posea Bench**.

**Lamps are only available in EMEA.*



Design Galleries

Abby Sofa Series

Designed by Outofstock



Abby Sofa
2-seater D86/SD60 x W190, H71/SH40 cm
3-seater D86/SD60 x W230, H71/SH40 cm

Abby Armchair
D86/SD60 x W115, H71/SH40 cm

Aura Sofa

Designed by Charlotte Høncke



Aura Sofa
2½-seater D78/SD55 x W193, H81/SH43 cm

Cloud Sofa Series

Designed by Yonoh Estudio



Cloud Sofa
2½-seater D82/SD58 x W192, H75/SH43 cm
3-seater D82/SD58 x W222, H75/SH43 cm

Cloud Armchair
D82/SD58 x W102, H75/SH43 cm

Cloud Pouf
Small D65 x W65, H43 cm
Large D65 x W122, H43 cm

Caisa Modular Sofa Series

Designed by BÖTTCHER & KAYSER



A. Caisa Sofa



D. Caisa Chaise Longue Module



E. Caisa Back Unit Arm Module



F. Caisa Corner Module



G. Caisa Back Unit



H. Caisa Pouf

A Caisa Sofa
2-seater D91/SD70 x W182, H73/SH44 cm
3-seater D91/SD70 x W242, H73/SH44 cm

B Caisa Sofa with End Element Arm
2-seater D91/SD70 x W182, H73/SH44 cm
3-seater D91/SD70 x W242, H73/SH44 cm

C Caisa Sofa with Chaise Longue
3-seater D91/161/SD70/140 x W303, H73/SH44 cm
4-seater D91/161/SD70/140 x W363, H73/SH44 cm

D Caisa Chaise Longue Module
D161/SD140 x W121, H73/SH44 cm

E Caisa Back Unit Arm Module
D91/SD70 x W121, H73/SH44 cm

F Caisa Corner Module
D91/SD70 x W91, H73/SH44 cm

G Caisa Back Unit
Small D91/SD70 x W91, H73/SH44 cm
Large D91/SD70 x W121, H73/SH44 cm

H Caisa Pouf
Small D91 x W91, H44 cm
Large D91 x W121, H44 cm

I Caisa Cushion
A D14 x W60, H35 cm
B D14 x W70, H35 cm
C D15 x W90, H35 cm
D D15 x W100, H35 cm
E D15 x W120, H35 cm
F D14 x W55, H38 cm
G D17 x W60, H46 cm

J Caisa Armrest Cushion
Small D57 x W29, H17 cm
Large D71 x W29, H17 cm

Cosima Modular Sofa Series

Designed by kaschkasch



A. Cosima Corner Module



B. Cosima Back Module



C. Cosima Chaise Longue Module



D. Cosima Pouf



- A Cosima Corner Module
 - Small D120/SD90 x W120, H65/SH40 cm
 - Large D120/SD90 x W150, H65/SH40 cm
- B Cosima Back Module
 - Small D120/SD90 x W90, H65/SH40 cm
 - Large D120/SD90 x W120, H65/SH40 cm
- C Cosima Chaise Longue Module
 - D150/SD120 x W120, H65/SH40 cm
- D Cosima Pouf
 - Small D90 x W90, H40 cm
 - Large D90 x W120, H40 cm

Fuuga Sofa Series

Designed by Busetti Garuti Redaelli



- Fuuga Sofa
 - 2-seater D80/SD55 x W160, H86/SH45 cm
 - 3-seater D80/SD55 x W215, H86/SH45 cm

- Fuuga Armchair
 - D80/SD55 x W92, H86/SH45 cm

Gaia Sofa Series

Designed by Busetti Garuti Redaelli



- Gaia Sofa
 - 2-seater D82/SD55 x W185, H90/SH43 cm
 - 3-seater D82/SD55 x W260, H90/SH43 cm

Grace Sofa Series

Designed by Yonoh Estudio



- Grace Sofa
 - 2-seater D95/SD66 x W188, H78/SH43 cm
 - 3-seater D95/SD66 x W255, H78/SH43 cm

- Grace 5-seater Sofa
 - 5-seater D95/SD66 x W314, H78/SH43 cm

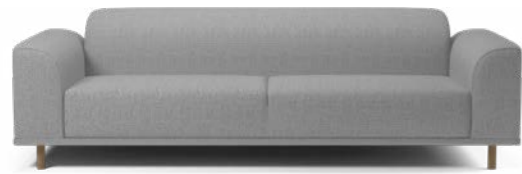
- Grace Sofa with Chaise Lounge
 - 4-seater D95/190/SD66/147 x W270, H78/SH43 cm

- Grace Pouf
 - Ø101, H43 cm



Hannah Sofa Series

Designed by Bolia Design Team



A. Hannah Sofa



B. Hannah Sofa with Open End



C. Hannah Corner Sofa with Open End



D. Hannah Pouf



A Hannah Sofa
2-seater D98/SD62 x W191, H72/SH43 cm
3-seater D98/SD62 x W235, H72/SH43 cm

B Hannah Sofa with Open End
2½-seater D96/SD62 x W213, H72/SH43 cm

C Hannah Corner Sofa with Open End
6-seater D96/212 / SD62 x W269, H72/SH43 cm

D Hannah Pouf
D62 x W70, H43 cm

Liva Sofa Series

Designed by Charlotte Høncke



Liva Sofa
3-seater D94/SD60 x W180, H101/SH44 cm

Liva Armchair
D94/SD60 x W77, H101/SH44 cm

Madison Sofa Series

Designed by Glismand & Rüdiger



Madison Sofa
2½-seater D94/SD62 x W204, H79/SH46 cm
3-seater D94/SD62 x W231, H79/SH46 cm

Madison Daybed
D86 x W197, H46 cm

Mara Sofa Series

Designed by Kressel & Schelle



Mara Sofa
2½-seater D80/SD53 x W230, H80/SH47 cm
3-seater D80/SD53 x W260, H80/SH47 cm

Mara Armchair
D80/SD53 x W90, H80/SH47 cm

North Sofa Series

Designed by Glismand & Rüdiger



A. North 2½-seater Sofa



A. North 3-seater Sofa



B. North Sofa with Chaise Longue

A North Sofa
 2½-seater D94/SD64 x W182, H81/SH45 cm
 3-seater D94/SD64 x W215, H81/SH45 cm

B North Sofa with Chaise Longue
 3-seater D164/94/SD64 x W260, H81/SH45 cm

Depth = D / Seat Depth = SD / Width = W / Height = H / Seat height = SH / Length = L / Diameter = Ø

Pebble Sofa

Designed by Santiago Bautista



Pebble Sofa
 Without table D78/SD58 x W270, H86/SH45 cm
 With table D78/110/SD58 x W270, H86/SH45 cm
 Table Ø40 cm

Pepe Sofa Series

Designed by Kaschkasch



Pepe Sofa
 2-seater D86/SD57 x W167, H79/SH42 cm
 3-seater D86/SD57 x W239, H79/SH42 cm

Pepe Armchair
 D86/SD57 x W89, H79/SH42 cm

Philippa Sofa Series

Designed by Buseti Garuti Redaelli



Philippa Sofa
 2-seater D82/SD51 x W140, H72/SH37 cm

Philippa Armchair
 D82/SD51 x W83, H72/SH37 cm

Philippa Footstool
 D45 x W62, H40 cm

Depth = D / Seat Depth = SD / Width = W / Height = H / Seat height = SH / Length = L / Diameter = Ø

Scandinavia Remix Sofa Series

Designed by Glismand & Rüdiger



A. Scandinavia Remix Sofa



A. Scandinavia Remix Sofa



B. Scandinavia Remix Sofa with Chaise Longue



C. Scandinavia Remix Corner Sofa with Open End



A Scandinavia Remix Sofa

2½-seater D90/SD58 x W192, H80/SH42 cm

3-seater D90/SD58 x W216, H80/SH42 cm

B Scandinavia Remix Sofa with Chaise Longue

3-seater D90/152 / SD58 x W246, H80/SH42 cm

C Scandinavia Remix Corner Sofa with Open End

5-seater D282/90 / SD58 x W272, H80/SH42 cm

Depth = D / Seat Depth = SD / Width = W / Height = H / Seat height = SH / Length = L / Diameter = Ø

Bonbon Pouf

Designed by Busetti Garuti Redaelli



Pouf with powder coated steel base and velvet top. Available in two sizes in two different colour variations. tone in tone nude or black base with dusty green velvet.

Small
Large

Ø55, H45 cm
Ø85, H40 cm

**Not available in the UK.*

Grab Pouf

Designed by OOOJA



This cheeky pouf is made to move. It goes anywhere and does anything. Drag it around by its leather strap, put your feet up or take a seat, whatever takes your fancy.

Small
Large

Ø40, H48 cm
Ø80, H33 cm

Zyl Pouf

Designed by Glismand & Rüdiger



Available in three sizes in a variety of fabrics and colours.

Ø50, H37 cm
Ø70, H40 cm
Ø90, H40 cm

Depth = D / Seat Depth = SD / Width = W / Height = H / Seat height = SH / Length = L / Diameter = Ø

C3 Armchair

Designed by Glismand & Rüdiger



Available in a variety of fabrics and leathers with legs in white oiled oak, oiled oak, smoked oak and oiled walnut.
D70/SD49.5 x W70, H74/SH42.5 cm

Palm Lounge Chair

Designed by Says Who



Available with seat in white pigmented oak veneer, natural oak veneer, walnut veneer or black stained oak veneer with matching plywood legs. Also available in both fabric and leather.

Without armrest D66.2/SD45.5 x W58, H73/SH38.4 cm
With armrest D66.2/SD45.5 x W72.2, H73/SH38.4 cm

Carmen Armchair

Designed by Yonoh Estudio



Available in a variety of fabrics with base in black lacquered steel.
D60/SD53 x W82, H110/SH44 cm

Saga Armchair

Designed by Anna & Signe



Available in a variety of fabrics and leathers with base in black lacquered, satin chrome or white lacquered steel.

Available with or without return swivel function.
Armchair D84/SD53.5 x W77, H101/SH45 cm
Footstool D38 x W55, H42 cm

Cosh Armchair Series

Designed by Kateryna Sokolova



With its refined, geometric lines and soft organic forms, the Cosh Armchair makes an iconic addition to any room. Cosh is made of solid, sustainable wood and the chair is moulded to extend the design's lifetime. The armchair is designed in three different heights; from low lounge chair to comfortable armchair with integrated headrest. Whatever the variant, Cosh's playful yet stylish design makes it an eye-catching piece of furniture.

Low Back	D77/SD52 x W73, H72/SH41.5 cm
Medium Back	D86/SD52 x W99, H96/SH41.5 cm
High Back	D89/SD52 x W90, H103/SH41.5 cm
Footstool	D62 x W67, H39.5 cm

Depth = D / Seat Depth = SD / Width = W / Height = H / Seat height = SH / Length = L / Diameter = Ø

Soul Lounge Chair

Designed by Hertel & Klarhoefer



Available in black stained solid oak, natural solid oak or white pigmented solid oak with seat in black or natural full grain leather.

D74/SD44 x W71, H73/SH36 cm

Depth = D / Seat Depth = SD / Width = W / Height = H / Seat height = SH / Length = L / Diameter = Ø

Comb Coffee Table

Designed by Says Who



Available with top in lacquered oak veneer, light grey lacquered oak veneer or walnut veneer with frame in black or white steel.

Ellipse W85 x L127, H37.5 cm
Round Ø85, H37.5 cm

Como Coffee Table

Designed by Glismand & Rüdiger



Available with top in concrete, glass, laminate, terrazzo*, marble and solid wood and with frame in white, black or stainless steel.

Como 55 x 55 Low W55 x L55, H(Frame)35.8 cm
Como 55 x 55 Medium W55 x L55, H(Frame)41.8 cm

Como 60 x 60 Low W60 x L60, H(Frame)32 cm
Como 60 x 60 Medium W60 x L60, H(Frame)42 cm
Como 60 x 60 High W60 x L60, H(Frame)48 cm

Como 60 x 120 Low W60 x L120, H(Frame)32 cm
Como 60 x 120 Medium W60 x L120, H(Frame)42 cm
Como 60 x 120 High W60 x L120, H(Frame)48 cm

Como 90 x 90 Medium W90 x L90, H(Frame)42 cm
Como 90 x 90 High W90 x L90, H(Frame)48 cm

*Terrazzo only available on 60 x 60 and 60 x 120 variants.

Mera Side Table

Designed by Kenyon Yeh



Powder coated steel. Available in all-grey and all-black or with white lacquered oak top on white or black frame.

Ø50 cm, H52 cm

Mix Coffee Table

Designed by Studio Gud



Available with top in terrazzo, brown, black or grey/white marble and legs in white pigmented solid oak, natural solid oak or smoked solid oak.

Small Ø46, H48 cm
Medium Ø65, H35 cm
Large Ø94, H42 cm

Island Coffee Table

Designed by Umit Caglar



Island is a coffee table inspired by the Nordic nature with an organic design. The contours and soft lines of the table top imitate waves that hit the coast and help give Island a graphic and playful expression. The traditional craftsmanship is particularly evident in the solid base made of FSC-certified wood, while the design makes Island the perfect match for a sofa with chaise longue.

Available in oiled oak, white oiled oak and black stained oiled oak.

W129 x L107, H35 cm

Drum Coffee Table

Designed by kaschkasch



Powder coated black steel base. Available with three different table tops: smoked grey glass, black marble or white marble. Available in two sizes.

Tall Ø40, H45 cm
Wide Ø60, H35 cm



Move Coffee Table

Designed by Allan Nøddebo



Available with top in oak veneer or black lacquered veneer with black lacquered steel legs.

Small W60 x L60, H40 cm
Large W60 x L100, H43 cm

New Mood Coffee Table

Designed by Michael H. Nielsen



Available with top in walnut veneer, white pigmented oak veneer, natural oak veneer, white laminate, grey or black Fenix NTM® laminate with edge in walnut, natural oak or white pigmented oak and matching solid wood legs.

Small Ø60, H39.5 cm
Large Ø90, H42.5 cm

Pod Coffee Table

Designed by Busetti Garuti Radaelli



Available with top in brown, black, white or green marble with legs in black lacquered steel or brass.

Small W42 x L53, H41.6 cm
Large W50.7 x L65, H38 cm



Tuk Coffee Table

Designed by Büro Famos



Available with top in brown, black or grey/white marble and legs in white pigmented oak, natural oak or smoked oak.

Tuk Small - Extra Low W52 x L71.5, H27 cm
Tuk Small - Low W52 x L71.5, H35 cm
Tuk Small - High W52 x L71.5, H42 cm

Tuk Medium - Extra Low W68 x L83, H27 cm
Tuk Medium - Low W68 x L83, H35 cm
Tuk Medium - High W68 x L83, H42 cm

Tuk Large - Extra Low W80 x L110, H27 cm
Tuk Large - Low W80 x L110, H35 cm
Tuk Large - High W80 x L110, H42 cm



Vitro Coffee Table

Designed by Granstudio



Available in two sizes with powder coated steel base and smoke coloured glass top or black marble top.

Small Ø60, H43 cm
Large Ø90, H42 cm

Beaver Bar Table

Designed by Says Who



Available with top in black with solid legs in black stained oak.

Ø80, H102 cm

**Only available in EMEA*

New Mood Round Table

Designed by Michael H. Nielsen



Available with top in walnut veneer, white pigmented oak veneer, natural oak veneer, white laminate, grey or black Fenix NTM® laminate with edge in walnut, natural oak or white pigmented oak and matching solid wood legs. New Mood

Round seats up to 14 people with 3 extension leaves. Extension leaves sold separately.

Ø123.5(267.5), H73 cm

DT18

Designed by Glismand & Rüdiger



Available with top in white laminate, white pigmented oak veneer, natural oak veneer, smoked oak veneer or walnut veneer, with legs in white pigmented solid oak, natural solid oak, black stained solid oak, smoked solid oak or solid walnut. Seats up to 18 people with 3 extension leaves. Extension leaves sold separately.

W100 x L180(330), H73 cm

New Mood Square Table

Designed by Michael H. Nielsen



Available with top in walnut veneer, white pigmented oak veneer, natural oak veneer, white laminate, grey or black Fenix NTM® laminate with edge in walnut, natural oak or white pigmented oak and matching solid wood legs. New Mood

Square seats up to 16 people with 2 extension leaves. Extension leaves sold separately.

W95 x L170(270), H73 cm

Graceful Table

Designed by Michael H. Nielsen



The designer Michael H. Nielsen designed Graceful based on the idea of 'less is more'. And this can clearly be seen and felt. The level of detail is kept to a minimum to allow the table to speak its own distinct language. The worktop has an unbroken surface to emphasise the clean appearance, but a comprehensive technical knowledge is concealed beneath the surface, which is necessary when such a stringent table is to function successfully in practice. Graceful is made from solid,

FSC-certified oak and produced in a green factory where everything is either recycled or reused.

W95 x L160(260), H74 cm — 30 mm tabletop
W95 x L180(280), H74 cm — 30 mm tabletop
W95 x L200(300), H74 cm — 30 mm tabletop
W95 x L220(320), H75 cm — 40 mm tabletop

Depth = D / Seat Depth = SD / Width = W / Height = H / Seat height = SH / Length = L / Diameter = Ø



Depth = D / Seat Depth = SD / Width = W / Height = H / Seat height = SH / Length = L / Diameter = Ø

Node High Table

Designed by kaschkasch



Available with top in natural solid oak, white pigmented solid oak or smoked solid oak and with legs in natural solid oak, white pigmented solid oak, smoked solid oak or anthracite lacquered solid oak.

W62 x L160, H105 cm

Node Table

Designed by kaschkasch



Available with top in natural solid oak, white pigmented solid oak or smoked solid oak and with legs in natural solid oak, white pigmented solid oak, smoked solid oak or anthracite lacquered solid oak.

Node seats up to 14 people with 2 extension leaves. Extension leaves sold separately.

W90 x L220(320), H75 cm

Yacht Table

Designed by Glismand & Rüdiger



Available with top in white pigmented oak veneer, natural oak veneer or white laminate and with round or cone-shaped legs in natural solid oak or white pigmented solid oak.

Seats up to 16 people with 4 extension leaves. Extension leaves sold separately.

W100 x L210(410), H74 cm

Depth = D / Seat Depth = SD / Width = W / Height = H / Seat height = SH / Length = L / Diameter = Ø

Beaver Chair

Designed by Says Who



Available with seat in veneer or laminate with solid legs in solid oak in several variations. Also available in both fabric and leather.

D44 x W37, H82/SH46 cm

Beaver Bar Stool

Designed by Says Who



Available with seat in veneer, laminate, fabric or leather with solid legs in several variations.

Low
High

D41 x W39.5, H63.5/SH94 cm
D41 x W39.5, H73.5/SH104 cm

C3 Chair

Designed by Glismand & Rüdiger



Available in a variety of fabrics and leathers with legs in white pigmented solid oak, natural solid oak, smoked solid oak,

black lacquered and solid walnut.
D55/SD43.5 x W62, H79/SH46 cm

Depth = D / Seat Depth = SD / Width = W / Height = H / Seat height = SH / Length = L / Diameter = Ø

Facet Bar Stool

Designed by Allan Nøddebo



Available with seat in natural solid oak, white pigmented solid oak, smoked solid oak or black leather with base in black lacquered steel.

Low
High

D37 x W40, H63 cm
D40 x W42, H73 cm

New Mood Chair

Designed by Michael H. Nielsen



Available with seat in white laminate, white pigmented oak veneer, natural oak veneer or walnut veneer. Legs in white pigmented solid oak, natural solid oak or solid walnut.

D43/SD37 x W42, H83/SH48 cm

Hug Chair

Designed by Hertel & Klarhoefer



Available with shell in black, burned red, green or white. Base in natural solid oak, white pigmented solid oak, solid walnut, smoked solid oak, black stained oak, black lacquered steel, white lacquered steel and chrome.

Also available with shell in fabric.

D49/SD44 x W56, H84/SH46.5 cm

Palm Chair

Designed by Says Who



Available with seat in white pigmented oak veneer, natural oak veneer, walnut veneer or black stained oak veneer with matching plywood legs.

Also available in both fabric and leather.

Without armrest
With armrest

D50/SD39 x W42, H85/SH45 cm
D50/SD39 x W54, H85/SH45 cm

Kimono Chair

Designed by Pascal Bosetti



Available in both fabric and leather.
D63.5/SD42 x W70, H81/SH50 cm

Sleek Chair

Designed by Says Who



Available in white pigmented solid oak, natural solid oak, smoked solid oak and white, grey or black lacquered beech. Optional with black or grey leather seat.

D55.5 x W54.7, H78.4/SH45 cm



Swing Chair

Designed by Henrik Sørig Thomsen



Available in natural oak, white pigmented oak and black stained oak. Optional with seat in Quattro traceable leather.

D47.5/SD44 x W55, H74.5/SH45 cm

Berlin Bench

Designed by Hertel & Klarhoefer



Available in 2 sizes in oiled oak veneer. Cushions are available for the bench and sold separately.



Small W126.4 x D42, H33.5 cm
Medium W168.2 x D42, H33.5 cm

Tune Chair

Designed by Henrik Sørig Thomsen



Tune means to correct the pitch or adjust, and that is exactly what Tune does - in both form and function. The idea behind the design is simple; to create a chair that releases space in a room instead of consuming it. The chair's slim and elegant

frame with durable construction means Tune chairs have the unique ability to be stacked.

D46/SD40 x W50, H79/SH45 cm

DT Bench

Designed by Glismand & Rüdiger



Available in 2 sizes with top in white pigmented oak veneer, natural oak veneer, smoked oak veneer, walnut veneer or black stained oak with legs in white pigmented solid oak, natural solid oak, black stained solid oak, smoked solid oak or solid walnut.

DT18 Bench W160 x D40, H45 cm
DT20 Bench W200 x D40, H45 cm

Valby Chair

Designed by Glismand & Rüdiger



Available with seat in white pigmented oak veneer or black stained oak veneer with matching plywood legs.
D51/SD41 x W45, H77/SH44 cm

X-Stool

Designed by MUT Design



Available in oak, walnut and white oiled oak.
D33 x W40, H45 cm

Float Bench

Designed by Outofstock



Bench available in oak, white oiled oak or black stained oak with either wool fabric in a variety of colours or black or cognac leather for the seat cushion.

W114 x D35, H42 cm

Floow Sideboard

Designed by Michael H. Nielsen



Sideboard available with cabinet in white pigmented solid oak, smoked solid oak, natural solid oak or solid walnut with white laminate fronts. Designed to fit the DT Table.

Small W136 x D50, H73 cm
Large W202 x D50, H73 cm

Vienna Sideboard

Designed by Hertel & Klarhoefer

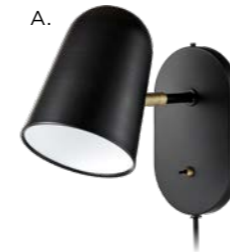


Available in natural solid oak or white pigmented solid oak with doors in braided veneer.

Designed to fit the Yacht Table.
W136 x D49, H92 cm

Bureau Lamp Series

Designed by Benny Frandsen



A.



B.



C.

Available in grey, black or white - all with antique brass details.

A Bureau Wall Lamp
D24 x W14, H22 cm
Shade Ø13 x H17 cm

B Bureau Table Lamp
D52 x W14, H45 cm
Shade Ø13, H17 cm

C Bureau Floor Lamp
D74 x W22, H140 cm
Shade Ø13 x H17 cm

*Bulbs not included. Only available in EMEA.

Grape Lamp Series

Designed by Morten&Jonas



A Floor Lamp

Available in antique brass, smoke grey glass and black marble base or in matt black, smoke grey glass and black marble base.

H180 cm. Lamp shade Ø36 cm

B Grape Pendant

Available in two sizes and in two designs for each size - Slim and Wide. Each design and size are available in more colours.

Small - Slim H27 cm, lamp shade Ø20 cm
 Large - Slim H36 cm, lamp shade Ø28 cm
 Small - Wide H21 cm, lamp shade Ø25 cm
 Large - Wide H31 cm, lamp shade Ø36 cm

C Grape Table Lamp

Available with black marble base, black bar and smoke coloured glass, or with black marble base, antique brass plated bar and smoke coloured glass.

W31, H58 cm. Glass shade Ø25 cm

D Grape Wall Lamp

Wall lamp available with black marble base, black bar and smoke coloured glass or with black marble base, antique brass plated bar and smoke coloured glass.

W27.5, H47 cm. Lamp shade Ø20 cm

**Bulbs not included. Only available in EMEA.*

Depth = D / Seat Depth = SD / Width = W / Height = H / Seat height = SH / Length = L / Diameter = Ø

Kire Lamp Series

Designed by Denis Guidone



Kire is a captivating lamp, the glass is mouth blown, and the precise lines that give Kire its decorative and distinctive look are all hand-carved. Therefore, no two Kire lamps are alike, and the many hours and considerations behind them tell a story of extraordinary craftsmanship that will survive future generations and trends.

Available in Smoke Grey and Clear.

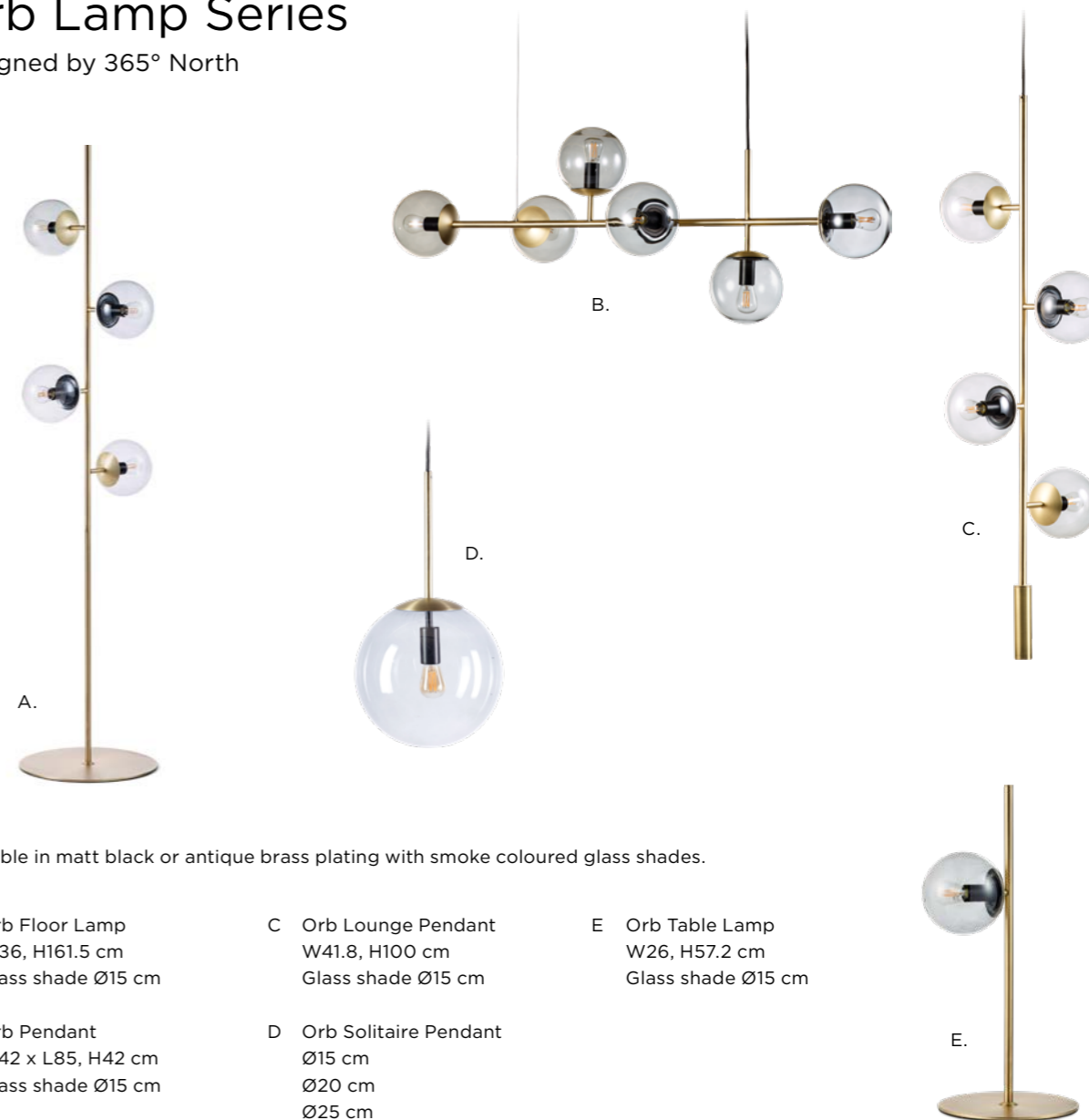
Kire Table Lamp
 H25.1 cm, Lamp shade Ø34 cm

Kire Pendant
 H25.1 cm, Lamp shade Ø34 cm

**Bulbs not included. Only available in EMEA*

Orb Lamp Series

Designed by 365° North



Available in matt black or antique brass plating with smoke coloured glass shades.

A Orb Floor Lamp
 W36, H161.5 cm
 Glass shade Ø15 cm

B Orb Pendant
 W42 x L85, H42 cm
 Glass shade Ø15 cm

C Orb Lounge Pendant
 W41.8, H100 cm
 Glass shade Ø15 cm

D Orb Solitaire Pendant
 Ø15 cm
 Ø20 cm
 Ø25 cm

E Orb Table Lamp
 W26, H57.2 cm
 Glass shade Ø15 cm

**Bulbs not included. Only available in EMEA.*

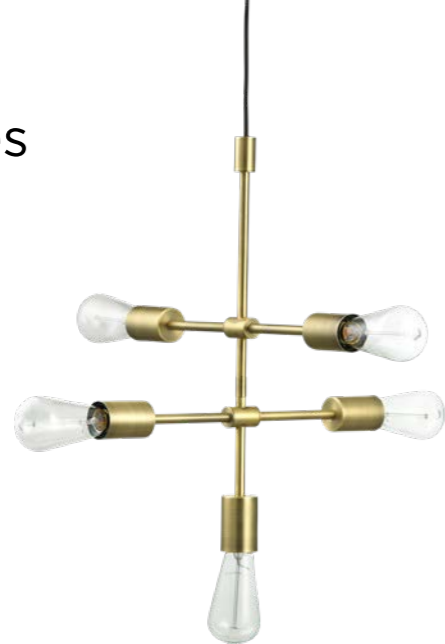
Depth = D / Seat Depth = SD / Width = W / Height = H / Seat height = SH / Length = L / Diameter = Ø

Piper Lamp Series

Designed by 365° North



Piper Table Lamp
H51 cm



Piper Pendant 5-arms
W42.5 x D42.5, H50 cm



Piper Lounge Pendant 3-arms
W29 x D21, H83.5 cm

**Bulbs not included. Only available in EMEA.*

Balloon Pendant

Designed by Meike Harde



The elegant and sheer fabric adds a light, playful effect to the Balloon lamp and reflects the light in an almost hypnotic way. Balloon features precise, hand-sewn details all down the side – details that have required a special technique and a very steady hand.

Available in Ivory and Grey.

Small H40 cm. Shade Ø47 cm
Large H60 cm. Shade Ø53.3 cm

**Bulbs not included. Only available in EMEA*

Depth = D / Seat Depth = SD / Width = W / Height = H / Seat height = SH / Length = L / Diameter = Ø

Flachmann Pendant

Designed by kaschkasch



Powder coated steel. Available in black or grey.

H8 cm. Lamp shade Ø26 cm
**Bulbs not included. Only available in EMEA.*

In-Circles Pendant

Designed by Studio Engvall-Moen



Pendant available in black or with brass plating.

W20 x L47, H74 cm
**Only available in EMEA.*

Rotate Pendant

Designed by 365° North



Pendant available in matt black or antique brass.

H23 cm. Lamp shade Ø21.5 cm
**Bulbs not included. Only available in EMEA*

Depth = D / Seat Depth = SD / Width = W / Height = H / Seat height = SH / Length = L / Diameter = Ø

Classic Cushion

Designed by Bolia Design Team



This is our most exclusive range of cushions, filled with goose feathers and a hand-sewn cover available in a variety of fabrics and colours.

Small W40 x H40 cm
Large W50 x H50 cm

Mega Floor Cushion

Designed by Bolia Design Team



Multifunctional and lovely soft furnishing for lounging on, available in a variety of fabrics and colours.

W120 x H120 cm

Pont Series

Designed by AC/AL



Pont Console
Available with powder coated steel frame and both shelves in black stained oak veneer or with top shelf in black stained oak veneer and bottom shelf in black marble.

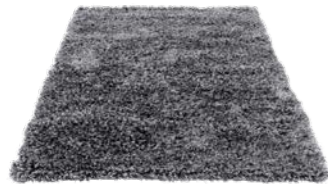
W100 x D30, H90 cm

Pont Shelf
Available with powder coated steel frame and shelves in black stained oak veneer.

W150 x D30, H60 cm

Bossa Rug

Designed by Bolia Design Team



Handknitted rug in New Zealand wool. All our rugs carry a 'Care' label.

W140 x L200 cm
W170 x L240 cm
W200 x L300 cm

Kakudo Rug

Designed by Bolia Design Team



Leather, structured for geometric eye-candy, it is naturally calm with vibrant dynamics.

W140 x L200 cm
W170 x L240 cm
W200 x L300 cm

Posea Series

Designed by Granstudio



Posea Side Table
Black powder coated steel base with black marble table top.

L80 x D35, H48 cm

Posea Bench
Bench available in nude, blue or grey velvet.

L80 x D35, H48 cm

Loop Rug

Designed by Bolia Design Team



High-quality handmade rugs. All our rugs carry a 'Care' label.

W140 x L200 cm
W170 x L240 cm
W200 x L300 cm

Scandinavia Rug

Designed by Bolia Design Team



A rug doesn't just create warmth and cosiness - it's also used to creatively decorate your office in different zones. This beautiful Scandinavia rug will look lovely under your sofa or table - or perhaps somewhere else in your home?

W140 x L200 cm
W170 x L240 cm
W200 x L290 cm

Lean Shelf

Designed by Allan Nøddebo



Take a typical shelf, tear it apart and build it again. That's what we did with Lean. The basic philosophy behind Lean was to create a shelf that breaks with conventions and lets you decide how to combine the shelves when it comes to orientation, colour and material.

W80 x D25, H8.8 cm

Quadro 2 Shelf

Designed by OOOJA



Available in black stained oak, oiled oak, white oiled oak or in walnut veneer.

W120.5 x D25, H67.5 cm

Trapeze Hook

Designed by Steffensen & Würtz



The Trapeze hooks designed by Steffensen & Würtz are created to go with the Trapeze clothes rail - but of course the hooks can be used for any wardrobe solution. The hooks are made in a raw combination of wood, leather and brass.

W4.5 x D3, H19.8 cm

Universal Headrest

Designed by Bolia Design Team



W37 x D7, H17 cm

Depth = D / Seat Depth = SD / Width = W / Height = H / Seat height = SH / Length = L / Diameter = Ø

Materials & surfaces

Fabric & Leather

The big question is what kind of fabric you want on your new sofa? Our many colourful textiles and soft leathers range from soft velvety velour to hard-wearing and natural wool. All are free from dangerous chemicals and 100% free of heavy metals, and our leathers are 100% traceable, meaning you can track every single piece from manufacturer to your office space, ensuring quality and transparency.

All to ensure the highest quality of each individual fabric extending the lifespan of your furniture with years.

Bergo Fabric

Bergo can do something none of our other materials can do. It's made from recycled polyester made of plastic bottles. No new raw materials are used in the production, and the chemicals are 100% degradable and completely harmless. Bergo is also 100% free of heavy metals and is certified according to the EU Ecolabel and OEKO-TEX standards.



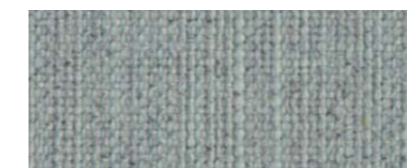
SPECIFICATIONS

Composition 98% Recycled polyester, 2% Polyester
Durability 100,000 Martindale
Light fastness 6-7
Pilling 5
Country of origin Lithuania
Tests & Certifications REACH, OEKO-TEX, Ecolabel, CAL 117



Baize Fabric

Baize is an extra soft upholstery fabric that provides superior comfort. The material has a beautiful, classic look that suits most furniture.



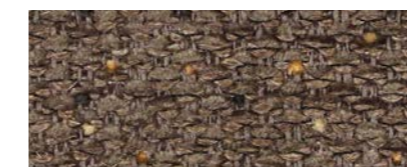
SPECIFICATIONS

Composition 100% Polyester
Durability 60,000 Martindale
Light fastness 5
Pilling 4-5
Country of origin China
Tests & Certifications REACH, OEKO-TEX, CAL 117, BS 5852 Source 0, BS 5852 Source 1, EN 1021-1



Memory Fabric

Memory is an upholstery toned with three colours that give the fabric a totally unique character. A durable and hard-wearing fabric with a beautiful and elegant structure that not only adds an exclusive look to any piece of furniture, but is also soft and comfortable to sit in.



SPECIFICATIONS

Composition 56% Acrylic, 30% Polyester, 7% Viscose, 5% Linen, 2% Cotton
Durability 40,000 Martindale
Light fastness 5
Pilling 4-5
Country of origin Belgium
Tests & Certifications REACH, OEKO-TEX, BS 5852 Source 0, BS 5852 Source 1



London Fabric

London is a strong upholstery fabric and comes in a variety of colors. It is a beautifully woven fabric with a pure and elegant look. London is 100% polyester.



SPECIFICATIONS

Composition: 100% Polyester
 Durability: 100,000 Martindale
 Light fastness: 5
 Pilling: 4-5
 Country of origin: China
 Tests & Certifications: REACH, OEKO-TEX, CAL 117, BS 5852 Source 0, BS 5852 Source 1, EN 1021-1



London Blue
 London Brown
 London Burgundy
 London Dark Grey
 London Dust Green
 London Dust Blue
 London Grey Brown
 London Light Beige
 London Light Grey
 London Light Blue
 London Mint

London Multi Grey
 London Petrol
 London Raw Amber
 London Rosa
 London Sea Green

Qual Wool

Qual is woven from 100% pure new wool. Developed for Bolia with wool from New Zealand and produced in Europe. The wool's natural content of lanolin makes the fabric easy to keep clean.



SPECIFICATIONS


Composition: 100% Wool
 Durability: 76,000 Martindale
 Light fastness: 5
 Pilling: 4
 Country of origin: Lithuania
 Tests & Certifications: REACH, OEKO-TEX, CAL 117, BS 5852 Source 0, BS 5852 Source 1, BS EN 1021-1, BS EN 1021-2



Qual Army Melange
 Qual Curry Melange
 Qual Dark Grey Melange
 Qual Grey Melange
 Qual Light Grey Melange
 Qual Mint Melange
 Qual Navy Melange
 Qual Rose Melange
 Qual Sand
 Qual Sea Green
 Qual Stone Grey


Novel Velour *Only available in the US.

Novel is an elegant and soft velour with a luxurious '70s vibe. The soft fabric feels comfortable and brushes blissfully against your body. A sophisticated fabric that makes sure your furniture will get noticed.



SPECIFICATIONS

Composition: 100% Polyester
 Durability: 75,000 Martindale
 Light fastness: 4-5
 Pilling: 5
 Country of origin: China
 Tests & Certifications: REACH, OEKO-TEX, CAL 117, BS 5852 Source 0, EN 1021-1



Novel Beige
 Novel Blue
 Novel Bordeaux
 Novel Cognac
 Novel Dark Green
 Novel Green
 Novel Grey Brown
 Novel Light Blue
 Novel Light Grey
 Novel Stone Blue

Laine Wool

Laine is a very exclusive wool fabric consisting of 92% pure New Zealand wool and 8% polyamide. The elegant melange effect gives the fabric has a wonderfully vibrant look. Furthermore, it is OEKO-TEX certified and EU Eco-labelled.



SPECIFICATIONS


Composition: 92% Wool, 8% Polyamide
 Durability: 95,000 Martindale
 Light fastness: 5-7
 Pilling: 3-4
 Country of origin: Lithuania
 Tests & Certifications: REACH, OEKO-TEX, Ecolabel, CAL 117, BS 5852 Source 0, BS 5852 Source 1, EN 1021-1, EN 1021-2



Laine Antracit
 Laine Beige
 Laine Dark Blue
 Laine Dark Grey
 Laine Grey
 Laine Light Blue
 Laine Light Brown


Ritz Velour *Only available in EMEA.

Ritz is a beautiful and velvety upholstery fabric. The velour fabric is exclusive in its appearance and its properties. Choose Ritz if you want a piece of furniture that stands out from the crowd.



SPECIFICATIONS

Composition: 83% Cotton, 17% Polyester
 Durability: 100,000 Martindale
 Light fastness: 5-6
 Pilling: 4
 Country of origin: Netherlands
 Tests & Certifications: REACH, BS 5852 Source 0



Ritz Curry
 Ritz Dark Blue
 Ritz Forest Green
 Ritz Grey
 Ritz Light Grey
 Ritz Light Rosa
 Ritz Petrol
 Ritz Steel Grey

Mira Wool

Mira is a 100% natural wool fabric with a mélangé effect that gives a lively colour play. The structure is firm with a soft touch and the threads are fine with a close weave. Mira is a high-quality fabric woven, tested and quality controlled in Germany. Mira is also OEKO-TEX certified with an extremely high wear resistance.



SPECIFICATIONS


Composition: 100% Wool
 Durability: 70,000 Martindale
 Light fastness: 5
 Pilling: 3-4
 Country of origin: Germany
 Tests & Certifications: REACH, OEKO-TEX, CAL 117, BS 5852 Source 0, BS 5852 Source 1, Crib 5



Mira Blue
 Mira Dust Green
 Mira Grey
 Mira Ivory
 Mira Stone Blue
 Mira Terra

Quattro Traceable Leather

Quality leather from European cattle. Quattro traceable leather is tanned without the use of chrome and can always be traced back to the cattle's area of origin. The leather is lightly surface treated and dyed, which ensures the appearance and colour of the leather.



SPECIFICATIONS

Composition: 100% Semi-aniline Leather
 Light fastness: 4-5
 Country of origin: Germany
 Tests & Certifications: REACH, CAL 117, BS 5852 Source 0, BS 5852 Source 1, EN 1021-1, EN 1021-2

Quattro Black
 Quattro Brown
 Quattro Cognac
 Quattro Dark Brown
 Quattro Grey
 Quattro Ice
 Quattro Nougat
 Quattro Red
 Quattro White

Made from love. Made to last.

A tribute to the world-renowned designers that have helped us create our collection.

Their wholehearted passion for defining New Scandinavian Design and their love for beautiful materials from Mother Nature bring our products to life.

Made from love. Made to last.

Learn more about the partnership and our collection at
www.bolia.com/steelcase

