



Steelcase

Australia Stock Program

 Delivers in 5 Business Days* >



Steelcase Series 1

LiveBack Technology, Adjustable 4D Arms or Armless, Adjustable Lumbar, Hard Casters

Finishes:
Black Frame and Black Base
Back – 3D Microknit Licorice (5T21)
Seat – New Black James (5J09)

Armless – SKU: 435A00.5T21.5J09.WA
Adjustable 4D arm – SKU: 435A00.5T21.5J09.A



Leap

LiveBack Technology, Adjustable 4D Arms, Adjustable Lumbar, Soft Casters

Finishes:
Black Frame and Black Base
Back – New Black James (5J09)
Seat – New Black James (5J09)

Adjustable 4D arm – SKU: LEAP10100.7250.5J09.A



Think

Integrated LiveBack Technology, Adjustable 4D Arms or Armless, Dual Energy Adjustable Lumbar, Hard Casters

Finishes:
Black Frame and Black Base
Back – 3D Knit Licorice (5064)
Seat – New Black James (5J09)

Armless – SKU: 465A300.5064.5J09.WA
Adjustable 4D arm – SKU: 465A300.5064.5J09.A



Gesture

Core Equalizer, 360-degree Arms, Adjustable Lumbar, Hard Casters/Soft Casters

Finishes:
Black Frame and Black Base
Back – New Black James (5J09)
Seat – New Black James (5J09)

360-degree arm – SKU: 442A30.7250.5J09.A

Warranty:

Steelcase Limited Lifetime Warranty
Including 12 years on moving parts.

Certifications:





On the QT

Tall angled phonebooth (Left hand side)

Finishes:

Front and Rear Metal Cladding — Black

Lean Pad and Privacy Screen — Camira Blazer (CUZ1E Surrey)

Shelf — 0720 Nero Ingo

Dimension: 1000W x 1200 x 2200H (mm)

Lean Pad: Yes

Privacy Screen: Yes

Shelf: Yes (L-Shape)

Power Entry: Top

Power Type: Type I (1 Power + 2 USB)

Occupancy Light: Yes

Tall booth — QT03/QT04

Short angled phonebooth (Right hand side)

Finishes:

Front and Rear Metal Cladding — Black

Lean Pad and Privacy Screen — Camira Blazer (CUZ1E Surrey)

Seating (Back, Seat and Arm) — Camira Blazer (CUZ1E Surrey)

Table — 0720 Nero Ingo

Dimension: 1000W x 1200 x 1900H (mm)

Lean Pad: Yes

Privacy Screen: Yes

Seating: Yes (With Tablet)

Power Entry: Top

Power Type: Type I (1 Power + 2 USB)

Occupancy Light: Yes

Short booth — QT03/QT04

Integrated furniture — QTF-01/QTF-02

Warranty:

5 years warranty

2 years on electric parts

Certifications:



Migration SE Pro Linear Bench



Extended Range: 650 – 1250mm
Overall: 4800W x 1600D x 650-1250H mm
Per position: 1600W x 800D |
Actual top size: 1575W x 750D
 (25mm pinch gap, 100mm gap between back-to-back position)
Corners: Rounded

Cable Management:
 Under desk cable tray with umbilical
 Lower cable trough for cable management

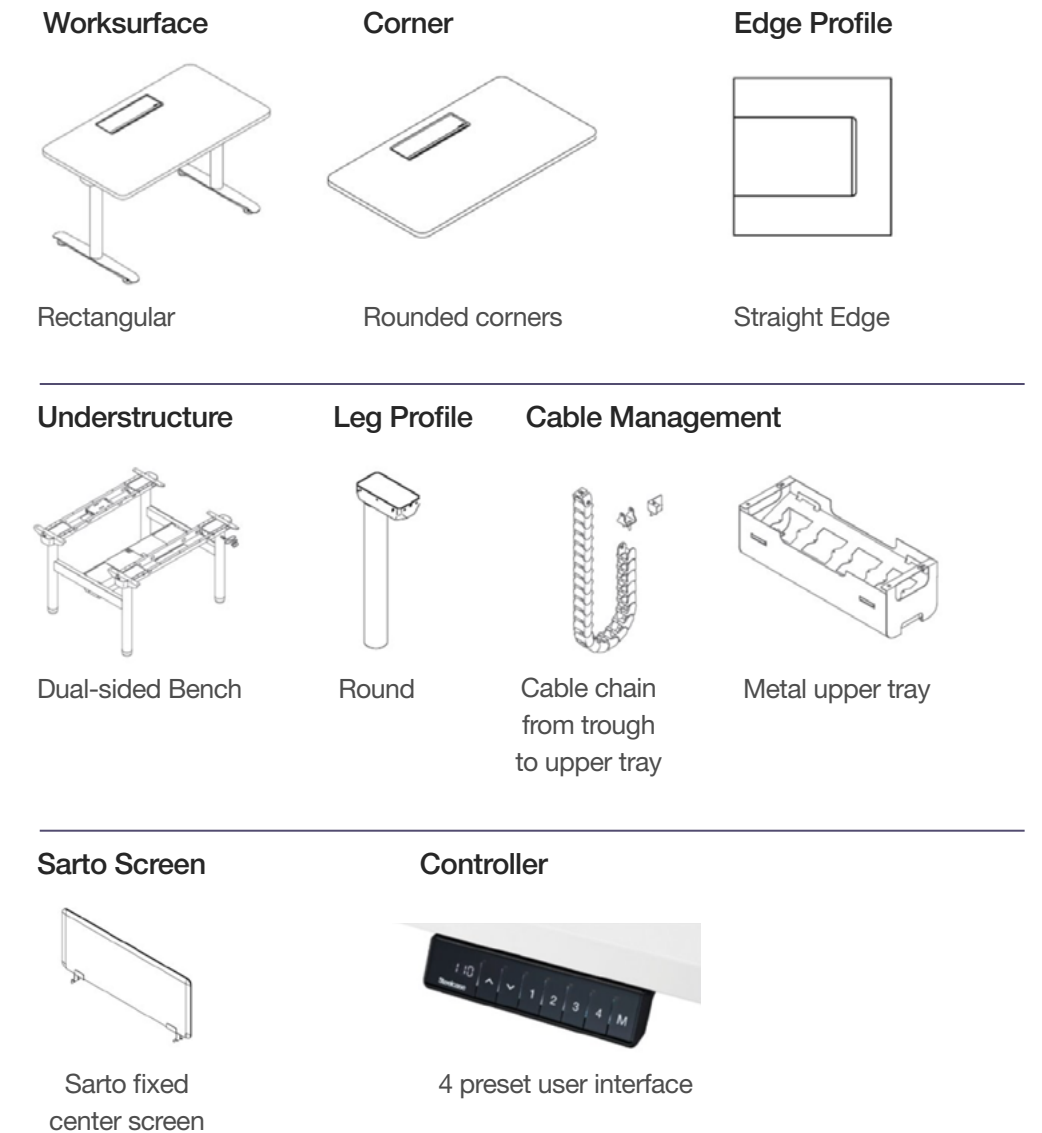
Finishes:
Understructure: Round Column
Colour: Arctic White

Worksurface:
 Option 1 –
 Lux board, Lux White finish E0 GECA certified 100% Recycled content, matching ABS edge, 4x radius corners

Option 2 –
 Lux board, Lux Oak finish E0 GECA certified 100% Recycled content, matching ABS edge, 4x radius corners

Additional accessories:
 SARTO Privacy center screen, 1220H mm AFFL
Fabric Range: Otto
Colour: Smoke

Statement of Line



Warranty:

12 years warranty

Certifications:





Flex Mobile Power

Kit includes:

Five mobile power units and
one charging tray

Mobile power unit:

Three USB-C ports and one USB-A port

Recharges in eight hours

Over 200 watt-hour capacity

Up to 117W of power offered simultaneously to up to four devices

Charging tray:

Holds five mobile power units

Finishes:

White

Flex Mobile Power — FLXBATP+FLXMCTAD

Warranty:

1 year warranty

Series 1



4D ADJUSTABLE ARMS



ADAPTIVE
BOLSTERING



SEAT DEPTH
ADJUSTMENT



INTEGRATED
LIVEBACK®
TECHNOLOGY



WEIGHT-ACTIVATED
MECHANISM



Ergonomic essentials for anyone, anywhere



MOVEMENT

- 1 Contoured backrest**
Aligns your spine in its natural, healthy S-shape
- 2 LiveBack® Flexor System**
Conforms to your body and moves with you to support the spine as you change postures
- 3 Height-adjustable lumbar**
Height adjustable lumbar support helps you custom fit support in your lumbar region with 60mm adjustment range
- 4 Weight-activated backrest tension with boost + upright back lock**
Responds automatically as you sit and move — with one additional boost tension setting to increase the resistance you feel as you can recline and an upright back stop locking you in an upright position

CONNECTION + FIT


- 5 Fully adjustable arms**
Raise up and down, pivot in and out, and shift forward and back + side to side, to provide steady support for your arms so your shoulders can remain in a relaxed position with an adjustment range of 100mm in height, 80mm in width + 40° pivot ranges
- 6 Adaptive bolstering in seat**
Blend of high-density foam + infused air pockets for conforming, pressure-free sitting
- 7 Passive seat edge**
Flexible edge around perimeter relieving pressure points under your thighs
- 8 Seat depth adjustment**
60mm adjustment range
- 9 Pneumatic cylinder**
Provides a 115mm seat height range
- 10 Synchronized seat + back motion**
Keeps you in an optimal vision and reach zone


Think


4D ADJUSTABLE ARMS


FLEXIBLE SEAT
EDGE


SEAT DEPTH
ADJUSTMENT


INTEGRATED
LIVEBACK® SYSTEM


DUAL-ENERGY
LUMBAR



Smart, simple, sustainable



MOVEMENT

- 1 Contoured backrest**
Aligns your spine in its natural, healthy S-shape
- 2 LiveBack® flexor system**
Conforms to your body and moves with you to support the spine as you change postures
- 3 Height-adjustable lumbar**
Height adjustable lumbar support helps you custom fit support in your lumbar region. 100mm adjustment range; available on 3D microknit model only (not shown).
- 4 Weight-activated backrest tension with boost + variable back stop**
Responds automatically as you sit and move — with one additional boost tension setting to increase the resistance you feel as you recline. The variable back stop setting limits and/or locks a position in place (ADD extra 20% tension with the boost)

CONNECTION + FIT

- 5 Fully adjustable 4D arms**
Raise up and down, pivot in and out, and shift forward and back + side to side, to provide steady support for your arms so your shoulders can remain in a relaxed position with an adjustment range of 65mm in depth, 55mm in width and 30° in pivot
- 6 Adaptive bolstering in seat**
Blend of high-density foam + infused air pockets for conforming, pressure-free sitting
- 7 Passive seat edge**
Flexible edge around perimeter relieving pressure points under your thighs
- 8 Arms attach at base**
Keeping arms parallel to worksurface as you move
- 9 Seat depth adjustment**
50mm adjustment range
- 10 Pneumatic cylinder**
Provides a 103mm seat height range
- 11 Synchronized seat + back motion**
Keeps you in an optimal vision and reach zone

Leap



Ultimate adjustability for a custom sitting experience



MOVEMENT

- 1 Contoured backrest**
Aligns your spine in its natural, healthy S-shape
- 2 LiveBack® technology**
Provides flexibility and support as you move
- 3 Height-adjustable lumbar support (optional)**
Enables you to custom fit lumbar support. 100mm adjustment range
- 4 Lower back firmness control**
Dials in your preferred level of support in the lower back
- 5 Adjustable backrest tension with variable back stop**
Dials in level of resistance in your back as you recline with ability to lock in preferred position recline range
- Headrest (optional; not shown)**
Keeps your head and neck centered over the spine and shoulders. 60mm height adjustment range

CONNECTION + FIT

- 6 Fully adjustable arms**
Raise up and down, pivot in and out, and shift forward and back + side to side, to provide steady support for your arms so your shoulders can remain in a relaxed position with an adjustment range of 100mm in height, 100mm in width and 30° pivot
- 7 Adaptive bolstering in seat**
Blend of high-density foam + infused air pockets for conforming, pressure-free sitting
- 8 Passive seat edge**
Flexible edge around perimeter relieving pressure points under your thighs
- 9 Arms attach at base**
Keeping arms parallel to worksurface as you move
- 10 Seat depth adjustment**
40mm adjustment range
- 11 Pneumatic cylinder**
Provides a 100mm seat height range
- 12 Natural Glide™ Mechanism**
Automatically adjusts and allows the seat to glide forward so you can recline without leaving your optimal zone for seeing and reaching your work

Gesture



Enduring performance for all people, all tasks, all technology



MOVEMENT

- 1 Headrest (optional)**
Keeps your head and neck centered over the spine and shoulders. Highly adjustable: 150mm range of height adjustment, 100mm of forward and backward pivot movement, 90° of rotation
- 2 Contoured backrest / Core Equalizer**
Aligns your spine in its natural, healthy S-shape. Provides just the right amount of lumbar support in any angle of recline.
- 3 3D LiveBack® technology**
Provides back flexibility and support as you move
- 4 Height-adjustable lumbar (optional)**
Height adjustable lumbar support helps you custom fit support in your lumbar region. 50mm adjustment range
- 5 Adjustable backrest tension with variable back stop**
Dials in level of resistance in your back as you recline with ability to lock in preferred position recline range

CONNECTION + FIT

- 6 360° arms**
Allows a full range of motion to support varied tech interfaces with an adjustment range of 110mm in height, 255mm in width and 30° pivot
- 7 Adaptive bolstering in seat**
Blend of high-density foam + infused air pockets for conforming, pressure-free sitting
- 8 Passive seat edge**
Flexible edge around perimeter relieving pressure points under your thighs
- 9 Arms attach at base**
Keeping arms parallel to worksurface as you move
- 10 Seat depth adjustment**
65mm adjustment range
- 11 Synchronized seat + back motion**
Keeps you in an optimal vision and reach zone
- 12 Pneumatic cylinder**
Provides a 103mm seat height range

On the QT

WORKSURFACE:
SHELF /
L-SHAPED SHELF

FRONT PRIVACY
SCREEN

REAR LEAN PAD



For when you need a little privacy



Optimal User Comfort

The unique 'Kink' plays many roles in making On the QT like no other... one of them is an integral part in maximizing comfort.

- The depth gained by the kink allows a seamlessly, comfortable seating to be fitted perfectly in for the short booth.
- The upholstered seat is designed with ergonomic lumbar support, upholstered armrest and a generous tablet worksurface to support longer focus.

Best In Class Acoustics

On The QT offers a perfect balance of acoustic performance achieved by combining absorption, blocking and comfort.

- Curved screens create comfort and privacy, acting as an acoustic absorption by reducing reverb flutter between the glass.
- Internal walls are engineered to block sound from penetrating and the secure doorframe maintains consistent seals all round to ensure virtually no sound leakage.

Functional Destinations

The selection of short and tall pods offer flexibility providing users with the choice and control to create their own unique applications.

- On the QT can be arranged into neighborhoods. Lined up and dedicated for individual focus work or moved to create a "camp site" to allow teams to huddle, brainstorm and collaborate.
- Combining both short and tall booths in the space will intuitively communicate to users the function and duration of stay.

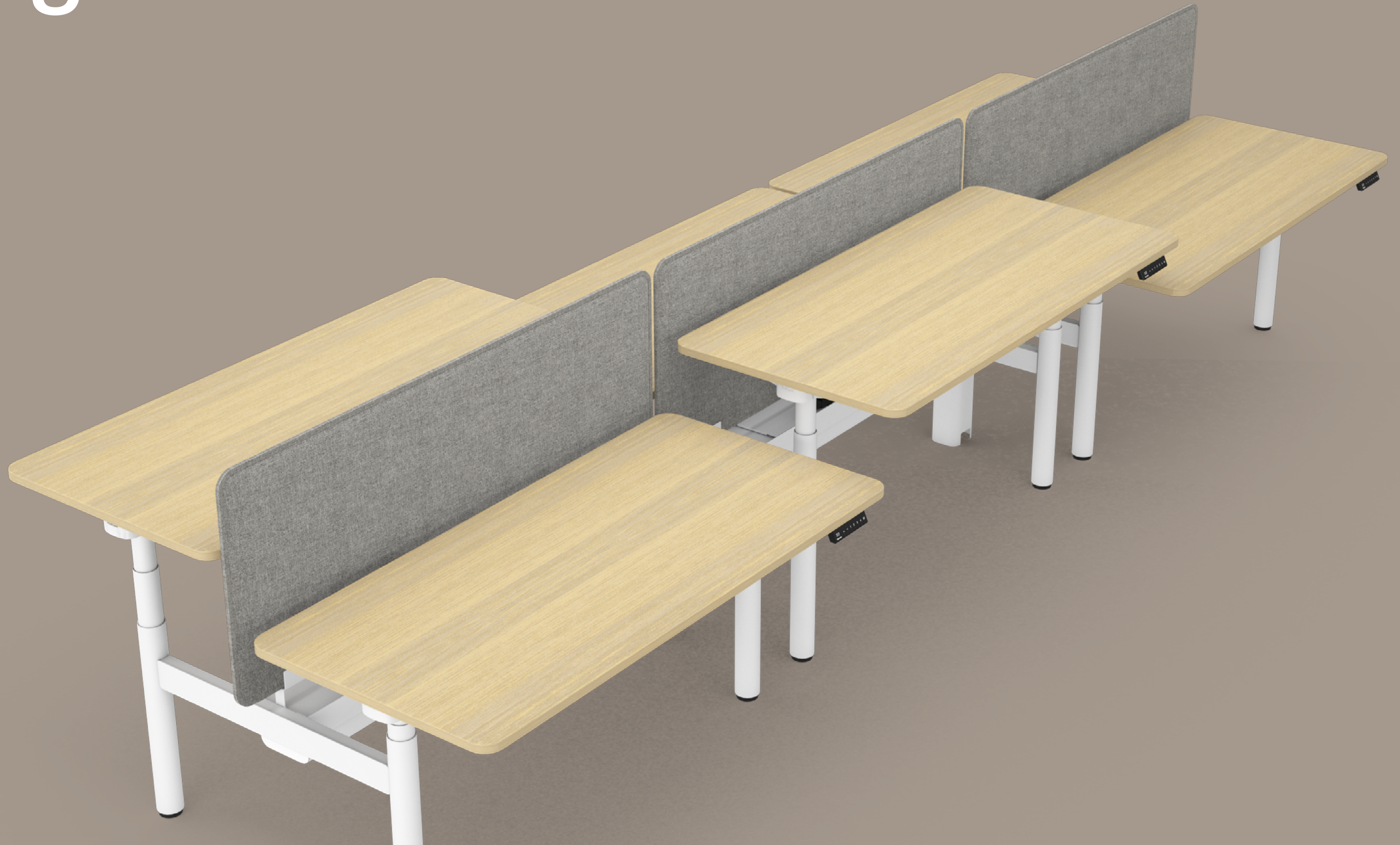
Facility Flexibility

On The QT can be assembled in just 1hr and once together, truck able wherever you wish...

Simply pop the bottom cover off, push a pallet truck underneath, jack up and wheel to wherever you want.... The short booth, will even go through a doorway wider than 1m.

Perfect as it creates minimum disruption today to day workflow!

Migration SE Pro



Plan for flexibility

Silent and powerful

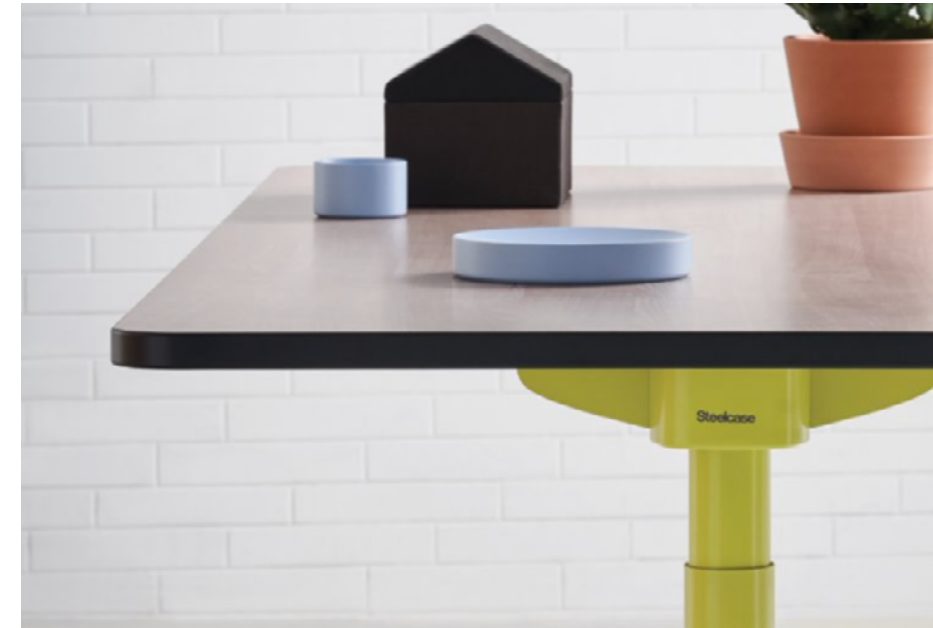
A powerful new digital motor makes smooth, seamless, and silent transition between postures and the controller can store four different posture settings.

Advanced anti-collision technology

The anti-collision sensor protects even light equipment from accidental knocks. A highly sensitive new mechanism detects any change in angle, from any point on the worksurface.

Cable management

More choice of components brings greater flexibility in cable management, with new metal cable trays or a metal and PET hybrid in a range of depths.



Approachable design

Contoured, soft rounded curves and harmonious arcs contribute to a welcoming work environment.

Sarto screens

For added privacy and a soft welcoming experience, shield workstations with Sarto screens in a range of colours and material finishes.

Robust stability

The refined understructure is visually lighter, yet sturdier than ever.

Flex Mobile Power



Beautifully designed, incredibly powerful

Charging Ports

Each mobile power unit has a best-in-class capacity of over 200 watt hours that can power three users simultaneously with USB-C and USB-A devices for a full day, or an individual for a full week. Intelligent technology recognizes each device's power needs and distributes power to the device that needs it most.

Portable and Lightweight

Just under three pounds, each unit is lightweight and easy to take with you wherever you work. A flexible handle makes it easy to grab and go.

Refined

Steelcase Flex Mobile Power is refined and can look great sitting on any tabletop, in any environment.

Proprietary Charging

A fixed, proprietary charging tray takes less than eight hours to charge five mobile power units, so they are ready for the next day's work.

Power Level Indicator

A power level indicator lets you know when the unit is running low.

STATEMENT OF LINE

Mobile Power kit includes:

Five mobile power units and one charging tray

Mobile Power unit*:

Three USB-C ports and one USB-A port

Recharges in eight hours

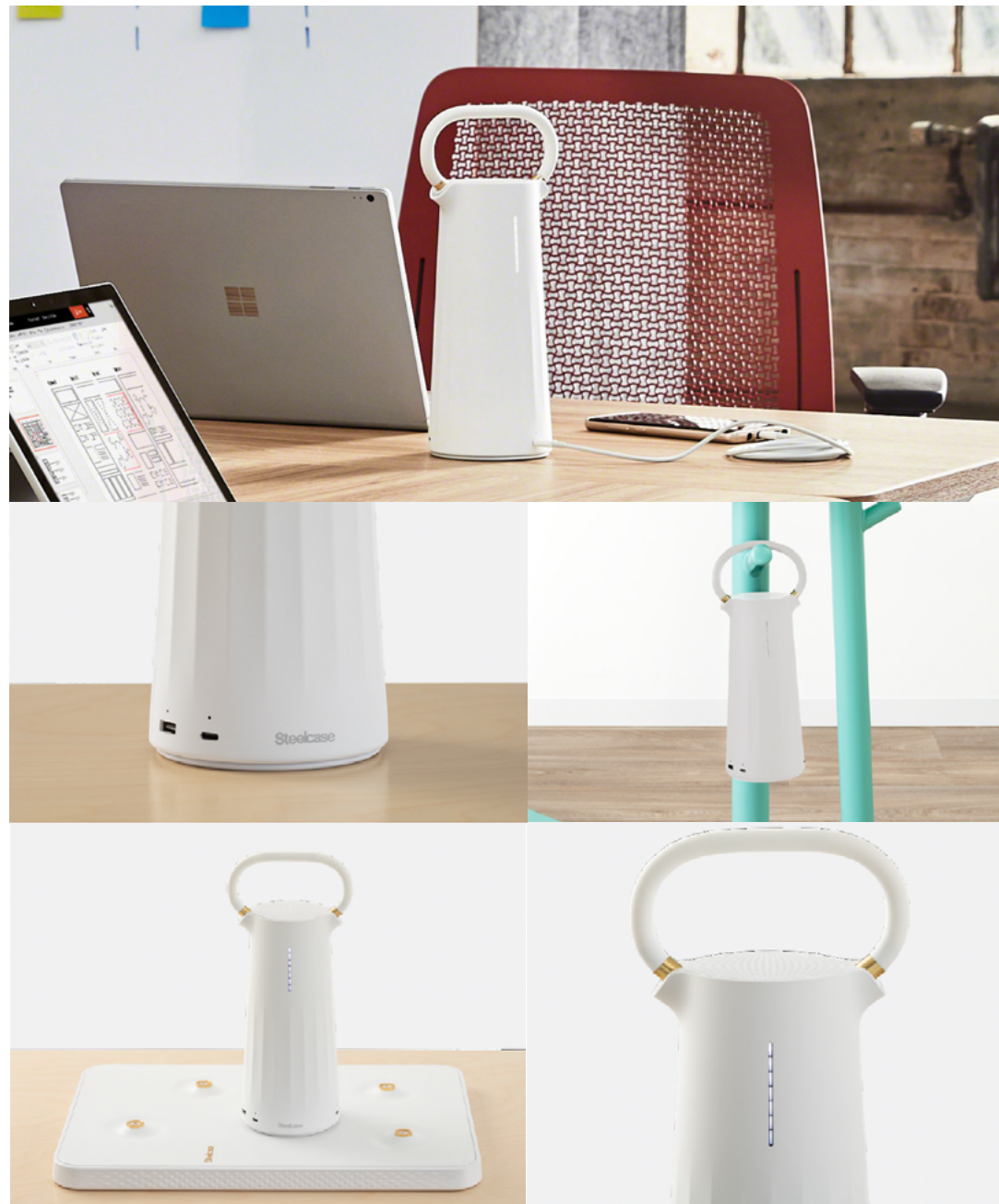
Over 200 watt-hour capacity

117W of total charging output

Charging tray*:

Holds five mobile power units

*Not sold separately



Visit Us



MELBOURNE, AUSTRALIA

Steelcase Melbourne
Suite G.06 / 54 Market Street,
Southbank, Vic 3006
Australia



SYDNEY, AUSTRALIA

Steelcase WorkLife Center
75 Elizabeth St
Sydney NSW 2000
Australia

Stocked in Australia Delivers in 5 Business Days*

Enquire Now >

* Freight & Delivery

Products featured in this brochure are stocked items.

Delivery of stocked items to metropolitan areas is typically made within 5-10 business days.

To learn more about our stock program, please contact us at 02 9660 5511.

Steelcase