



Steelcase Learning

Creating the Conditions for Lifelong Learning

Steelcase[®]

LEARNING

Who We Are. What We Do

At Steelcase Learning, we're passionate about helping to create the conditions for lifelong learning. Our insight-led solutions and settings inspire people to become engaged active learners within and beyond the classroom.



Meet the team

The World of Education and the Learning Community are capturing our minds at Steelcase Learning. As an organisation committed to deliver better experiences to Students and Educators, we believe we can make a difference by bringing in our expertise in education to help learning flourish.

Learning happens everywhere: the right mix of settings can encourage different kinds of interactions that help people learn and connect with one another, as well as providing spaces for focus.

Our Difference

This is our “what”. Our strength and differentiation comes from our holistic approach to lifelong learning, expressed in unique applications designed with the best solutions.

Lifelong Learning

Supporting a continuum of learning for every age and place.

Understanding + advocacy of lifelong learning

Range from K-12 to higher education to corporate learning

Deep expertise in the world of work

Research + Outcomes

Human-centered research with outcome-driven measurements of success.

Dedicated team to learn, study, solve + measure.

Understanding of trends and macro shifts

Outcomes driven (industry-leading learning environment survey tool)

Insights lead to spaces + solutions

Trusted Partner

Harnessing the Steelcase brand's reputation as a trusted partner.

Reliability - we keep commitments

Commitment to planet, people and culture through ESG initiatives

Industry leading dealer network offering experience, ease and expertise

Strong global capabilities

Dedicated to performance + quality

Industry leading warranty

Our Approach

This is our “how”. These messages express our approach to support leading institutions. They provide organization to our hierarchy of content.

Engaging Minds

Our approach begins with engaging people - students, educators, administrators, staff and employees.

Engaged learners are more successful. Greater engagement allows for a deeper, richer learning experience.

Supporting Content:

- Wellbeing
- Active Learning
- Blended Learning
- Personalized Learning
- Creativity
- Learning Brain
- Upskilling

Activating Spaces

The best way to empower people and engage minds is to activate the spaces where teaching and learning happen.

Supporting Content:
Active Learning Framework
Spaces + Applications
Products + Solutions

Learn Better

As we look to designing for the future, we look to creating learning and workplaces that are safe, compelling, resilient, and responsive to the ever-changing needs of businesses, students, educators and administrators.

Student and Educator Needs

Steelcase research revealed people want a dramatically different and better work experience and identified five critical student and educator needs expected to be met: when addressed, will improve how they feel about their company:

Safety

To be safe and feel safe

Belonging

Inclusion, trust and shared purpose

Effectiveness

Focus, collaborate and support

Comfort

Physical, cognitive and emotional

Control

More control over where and how they learn and work

This research continues to reinforce people's needs and helps pinpoint actions organizations can take to leverage their office, not just as a place to do work, but as an asset that helps solve many of the thorny issues they face today.

The research reaffirms the importance of the office and reveals whether people like or dislike their office makes a difference: People who like working from their office are significantly more engaged and productive, connected to their company's culture and less likely to leave.



How Can We Help

Engagement + Design Thinking

The aim is to understand students and educators' experiences and institutional ambitions that informs and supports a collaborative design approach.

Leader Workshops

Invite leaders to build shared workplace priorities and alignment.

Conceptual Applications

Imagine new planning methods with tailored application ideas and concepts informed by Steelcase Learning research.

User Workshops & Surveys

Ask students/educators to express evolving expectations, preferences and individual to team needs.

Pilot Experiences

Create Opportunities to test and validate new concepts by using the pilot space for 30 - 90 days.

Spatial Implications

Observe and collect data on how and where learn+work happens.

Measurement

Pre/Post measure application and settings; measure people and behaviors.

Our Customer Stories

The Sir Horace Kadoorie Youth Development Center, Shanghai

Partnering with iDA Workplace, Steelcase supported the Shanghai K Charitable Foundation in delivering a new holistically designed learning and living facility in Shanghai; offering disadvantaged youth from regional China the chance for a new start.



Our Customer Stories



Xi'an Liangjiatan International School

Xi'an Liangjiatan International School (XLIS) partnered with Steelcase Learning, embracing active learning to create an environment where students thrive, forming a new age for international schools in China.

2018 - X'ian, China



Our Customer Stories

Johnson Controls and Steelcase bring their shared vision to life in Singapore OpenBlue Innovation Center.

Partnership between NUS, the Singapore Government, Johnson Controls and ecosystem partners including Microsoft and Steelcase, the center is both an everyday workplace and a living laboratory to showcase the next generation solutions.

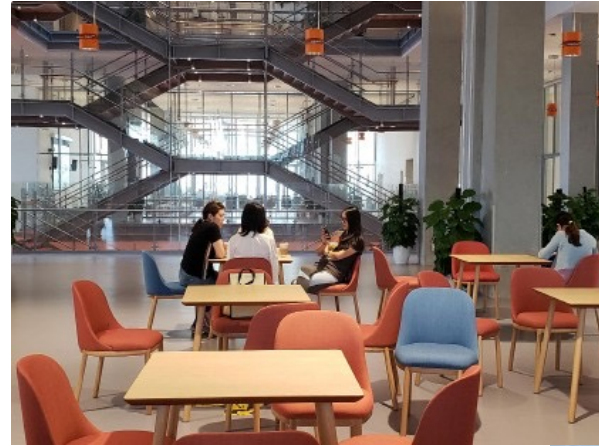


Our Customer Stories

Whittle School and Studio Shenzhen (Global)

The Whittle School & Studios has been designed to be a place for 2,200 students to learn and grow. At the core of the design is the view that a school should be like an educational village.

It becomes a space where the building opens up to the external world and enables the students to interact with the community in a safe environment..



Our Customer Stories

Wycombe Abbey

Wycombe Abbey Hangzhou Campus' main focus was to enable their bilingual pedagogy program. Their need was to utilise safe, high quality and sustainable products and user-friendly solutions. Through Steelcase, we came in to understand faculty and teacher needs and seek opportunities to enrich their teaching experience.

The collaboration and learning was so enriching, it expanded our solutions into Classrooms, Maker Spaces, Art Rooms, Canteen, Common Area and their Library.



Our Customer Stories

ISA Guangzhou

An Innovation Center that focuses on a group of parents who are eager to provide their children the best educational resources, health environment, and active learning experience. Through continuous communication with the teaching and operation team and in-depth understanding of a ISA's educational philosophy, we were able to gain their trust and enable their space that will benefit their pedagogies.

The additional success of this program had also been recognized by the WELL certification as a Leader in International Education in the Greater Bay Area.





Our Impact

At Steelcase, we believe that together we'll help build a healthy planet, healthy people and a healthy culture. Together, we'll unlock human promise for the next generation.

A holistic ESG commitment for holistic good

Environmental

Healthy Planet

Create products and operations that are good for the world.



Social

Healthy People

Cultivate opportunities for people and communities to thrive.

Governance

Healthy Culture

Curate a culture of trust and integrity.





Carbon Neutral Now. Beyond Net Zero Next.

We've already set third-party verified, science-based targets to go beyond Net Zero by 2030 and aim to reduce our own absolute emissions by 50%.

Our supply chain partners are joining us in collective action by setting their own science-based targets.



Our Commitment

Together, Steelcase Learning and our experienced industry-leading dealer network, delivers the expertise you need to create great learning spaces. Learning's dealer partners will streamline the entire process of creating better learning and work experiences.

Steelcase Learning is committed to working with you to test, learn and innovate to create better learning and workplaces. Here are some ways to get started with us:

- Test new applications in a pilot experience
- Understand evolving user needs with a collaborative situations workshop
- Explore application thought starters in our design guide
- Develop custom conceptual ideas for your space with help from our expert.

Contact us:

<https://www.steelcase.com/asia-en/become-a-steelcase-learning-dealer-partner/>

Connect with us:



[Instagram.com/steelcase.apac](https://www.instagram.com/steelcase.apac)



<https://www.facebook.com/SteelcaseLearning>



[linkedin.com/company/steelcase](https://www.linkedin.com/company/steelcase)

