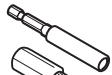


Eyesite™ Monitor / Laptop Mounting and Exchange

Installation Instructions 23125201 Rev A

Tools required:



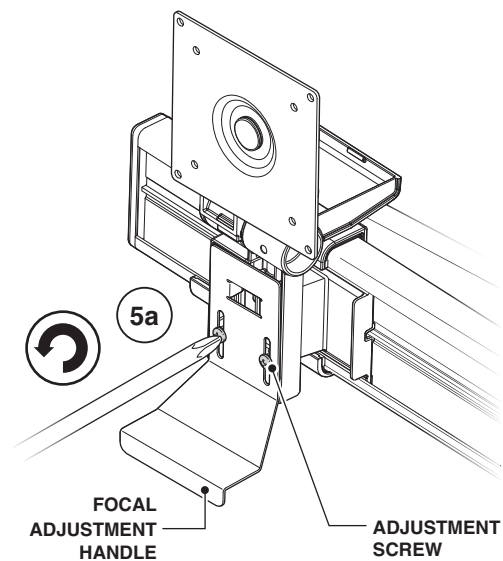
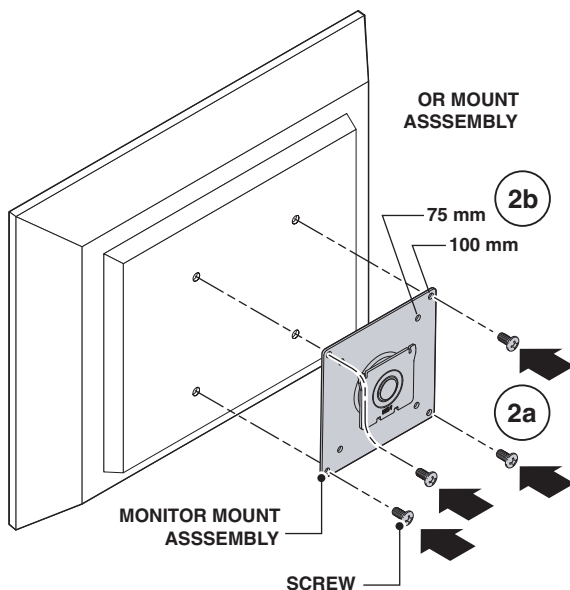
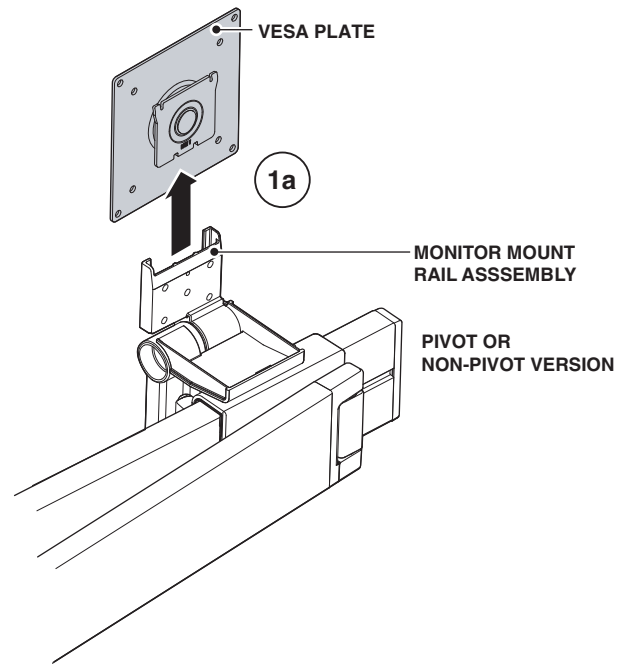
#2 Phillips Screwdriver



5/32" Allen Wrench (provided)

- 1** Lift each vesa plate from each monitor mount rail assembly (1a).
- 2** Place vesa plate onto the back of monitor (2a) and secure using four (4) screws. The holes to be used are determined by the monitor choice.

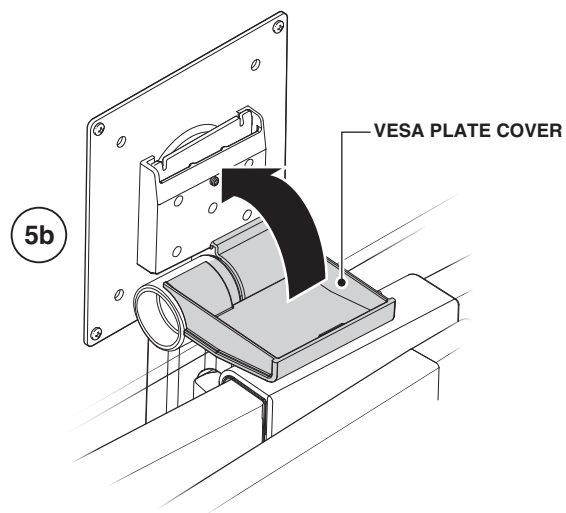
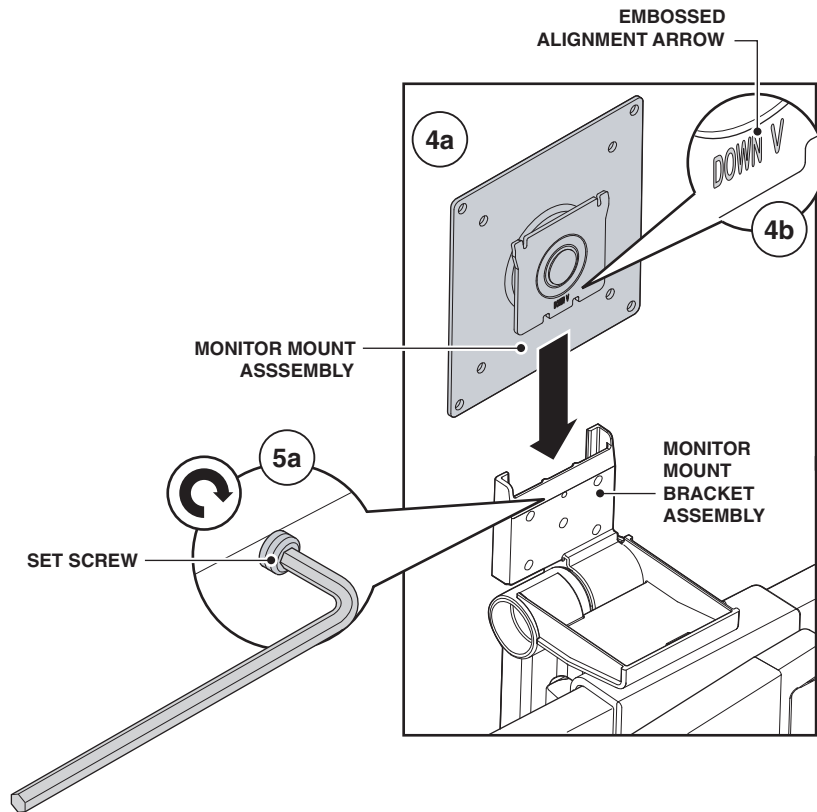
Use the outer four (4) holes for 100 mm and the inner four (4) holes for 75 mm (2b).
- 3** The focal adjustment handle may need to be moved downward depending on your monitor size. Locate the two (2) adjustment screws located on the monitor tilt bracket and loosen (3a). Adjust location of handle to be just below the bottom of the monitor (3b). Repeat this procedure for other monitor tilt bracket.



23125201 Rev A

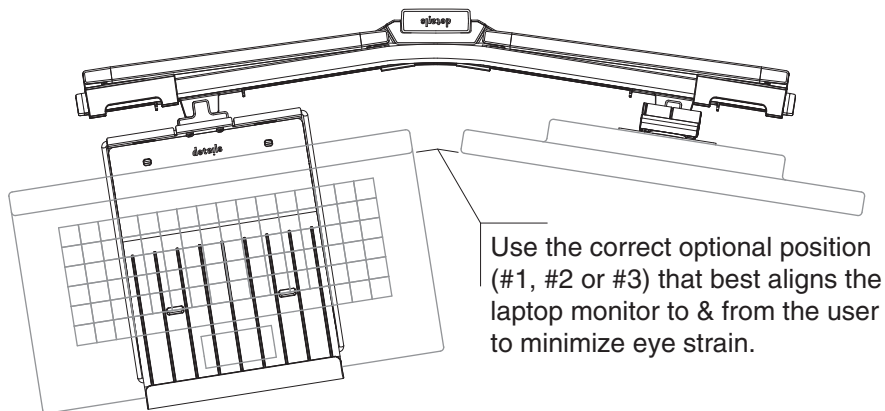
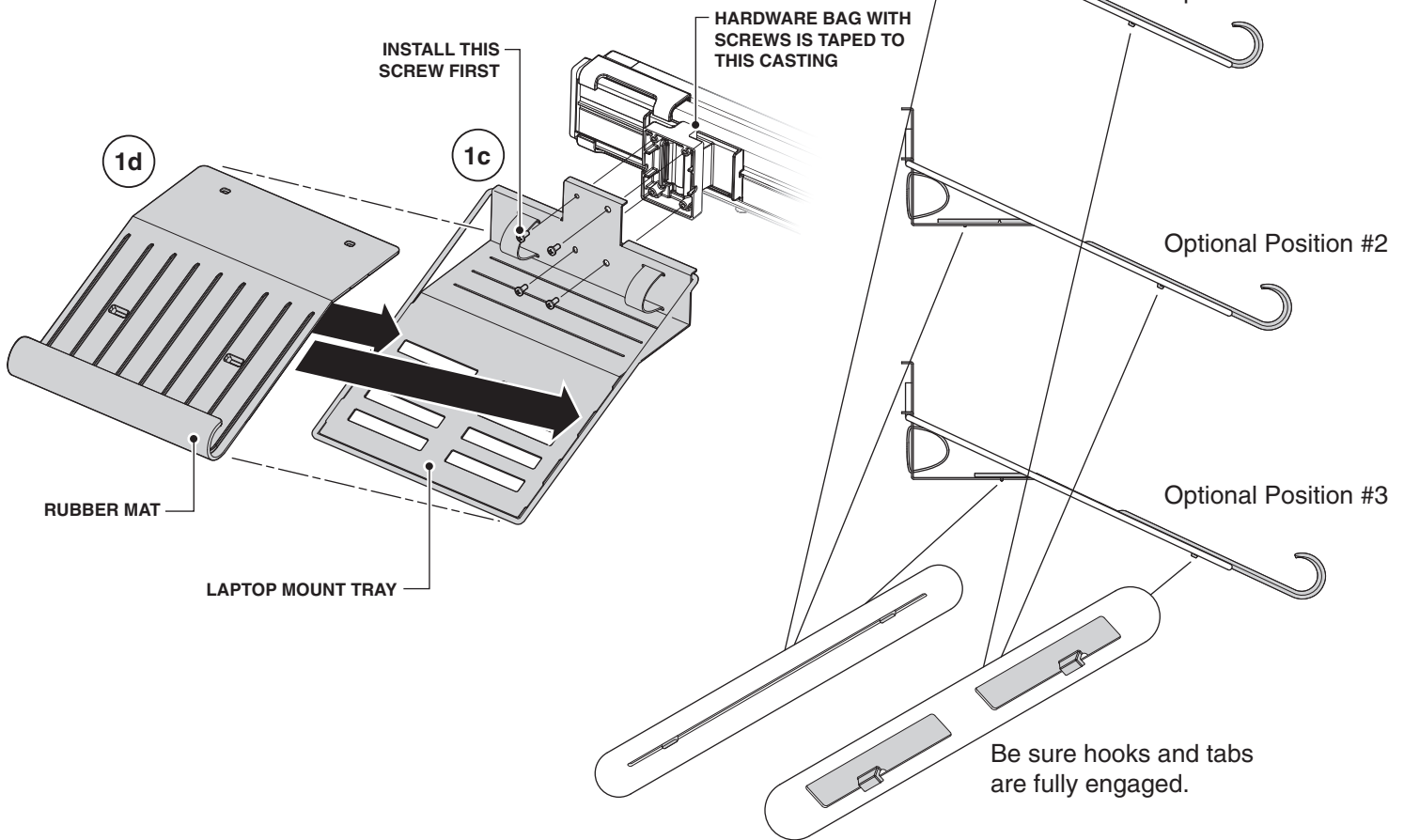
- 4 Slide vesa plate back into the monitor rail bracket assembly (4a). Take note of the embossed alignment arrow located on the vesa plate. This should be pointed downward (4b).

- 5 To secure each monitor rail, you must install the set screw and turn to the right to tighten using a 1/16" Allen wrench (5a).
Close each vesa plate assembly cover (5b).



If Using a Laptop Mount

- 1 Remove hardware bag from casting and install laptop mount tray to casting with screws in hardware bag (1c). Place rubber mat onto tray and position accordingly (1d).



23125201 Rev A

Exchanging Mounting

- 1 Remove components as shown (1a) Remove existing monitor mount rail assembly (1b). Slide tray assembly into rail (1c).

Re-install plate, screws and cap (1d). When installing the screws, insert screws oblong holes in plate making sure the screws are against the bottom of the oblong holes instead of the top.

This will ensure that the rectangular tabs on the inside of cap will fit properly into the rail.

